

ALL ELEVATIONS ARE VIEWED FROM OUTSIDE UNLESS OTHERWISE STATED.

CONTRACT NUMBER: P-14026

**GENERAL**  
DO NOT SCALE THIS DRAWING.  
It is the contractor's responsibility to verify all dimensions on site prior to proceeding with the works.  
Figured metric dimensions to be worked to wherever given. Imperial dimensions are approximate only and must not be relied upon. All dimensions, unless expressly noted otherwise, are structural, and due to allowance should be made for plaster, finishes, etc. Any discrepancies between the drawings and the works are to be verified with 'Penn Architectural Ltd.' before proceeding.

**READ ALL DRAWINGS AS ONE**  
Always ensure that the latest edition of all drawings is used at all times, if in doubt, please ask. This drawing is to be read in conjunction with the latest edition of all other relevant drawings, details and schedules.  
Please request an up to date list if in doubt.

Where any contradiction or uncertainty arises between the drawings and or the schedule of works, it is the contractor's responsibility to seek verification from 'Penn Architectural Ltd.' before proceeding.  
No claims will be met by 'Penn Architectural Ltd.' where the contractor continues works without confirmation.

**IMPORTANT**  
It is the contractor's responsibility to fully familiarize themselves with the works before proceeding.

**LEVELS**  
It is the contractor's responsibility to confirm all levels on site prior to commencement of any works. Levels shown on this drawing are for indication purposes only, except where specifically dimensioned. Where in doubt, refer immediately to 'Penn Architectural Ltd.'.

**MATERIALS AND WORKMANSHIP**  
Unless otherwise specified, all materials used in the carrying out of the works must be materials which have been tested, licensed or approved by a third party (i.e. British Standards Institution and the British Board of Agreement etc.)

Workmanship and site practices must be in accordance with the latest relevant codes of practice issued by independent third parties (e.g. The British Standards Institution Codes of Practice and the Specification for the Improvement, Repair and Rehabilitation of Property as published by the Chartered Institute of Environmental Health Officers etc.) All work to be carried out by, or under the supervision of experienced tradesmen skilled in the specific area of work involved.

**TOOLS & HAZARDOUS MATERIALS**  
All tools, hazardous materials, toxic substances or solvents must be used, stored and disposed of in strict accordance with current C.O.S.H.H. regulations.

**CDM REGULATIONS**  
The risk assessment for this scheme is available from 'Penn Architectural Ltd.' upon request.  
Whether or not implied on this drawing, consideration should at all times be given to the use of the "safest" materials and processes during the construction of the works. Where a required specification is not provided on this drawing, please refer immediately to 'Penn Architectural Ltd.' for information. Where the client or contractor provides their own specification for any part of the works, or changes any aspect of the design, they will be responsible as the "Designer" under the CDM Regulations for that portion of the works, unless prior approval is received from 'Penn Architectural Ltd.'.

A	22.05.15	Building Regulations
REV	DATE	COMMENTS

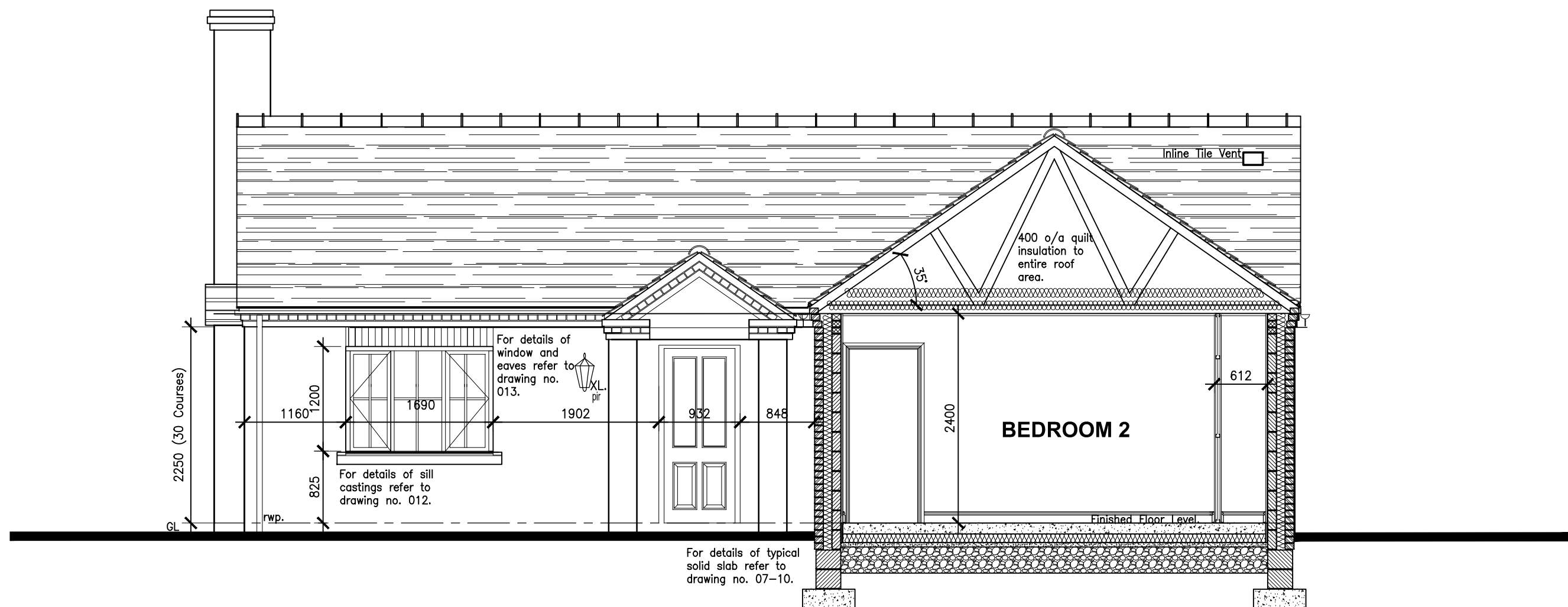
CONTRACT :  
No 3 Charlton, Telford. TF6 5EU

**PENN ARCHITECTURAL**  
26 Main Road, Kelley Bank,  
Telford, TF2 0DH  
Tel : 01952 375394  
Email : info@pennarchitectural.co.uk  
Website : www.pennarchitectural.co.uk

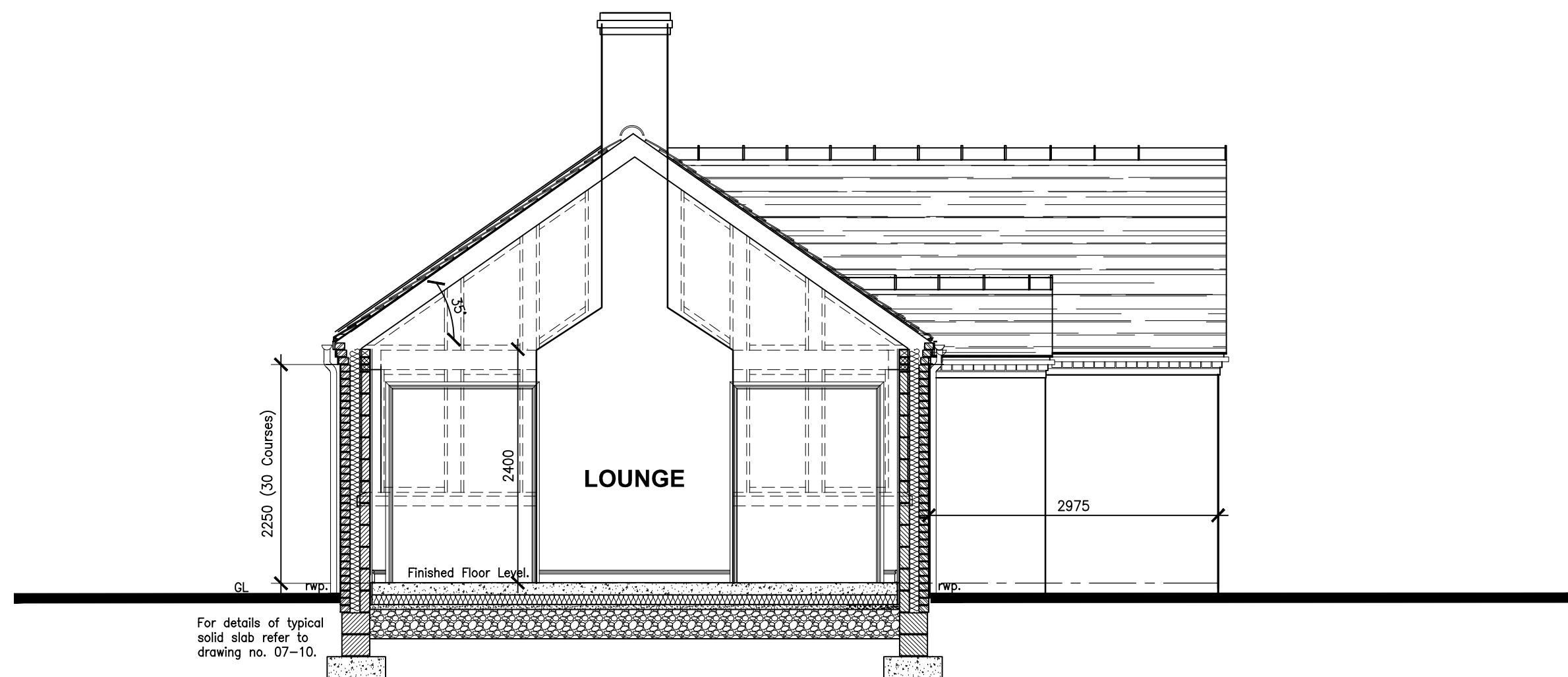
 **Chartered Institute of Architectural Technologists**  
Registered Practice

DRAWING TITLE :  
Proposed 2 Bedroom Bungalow to  
land adjacent to No3 Charlton.

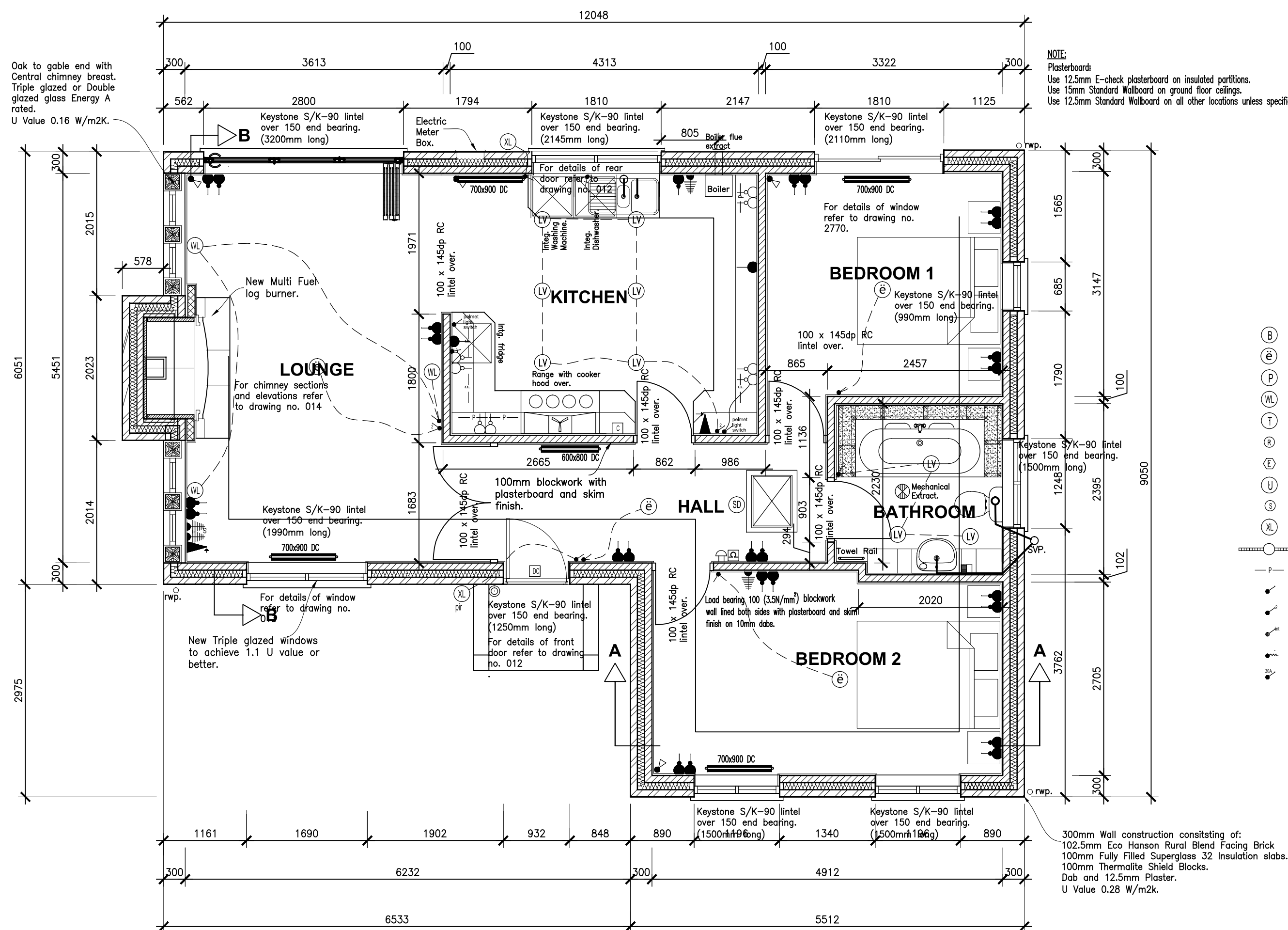
SCALE A1 1:50	DRAWING ISSUE STATUS Building Regulations	
DRAWN N.P.	DRAWING No.	REV
DATE 09.08.2014	CR-002	A



SECTION THROUGH A-A.



SECTION THROUGH B-B.



**PROPOSED GROUND FLOOR PLAN.**

NOTE :-  
INTERNAL DIMENSIONS ARE FROM BLOCKWORK FACE TO BLOCKWORK FACE, OR  
BLOCKWORK FACE TO FINISHED PLASTER FACE OF METAL STUD PARTITION.

**Electrical Key.**

- Ⓟ Battery light fitting.
- Ⓢ Energy efficient Pendant light fitting.
- Ⓢ Pendant light fitting.
- Ⓢ Wall light fitting.
- Ⓢ Tungsten downlighter.
- Ⓢ Recessed downlighter.
- Ⓢ Entry Phone
- Ⓢ Up lighter, wall light fitting.
- Ⓢ Spotlight.
- Ⓢ External light fitting.
- Ⓢ Fluorescent light fitting.
- Ⓢ Palmat light fitting.
- Ⓢ 1 way lighting switch.
- Ⓢ 2 way lighting switch.
- Ⓢ Intermediate lighting switch.
- Ⓢ Pull switch.
- Ⓢ 30amp double pole switch.

- Ⓢ Low level 13amp single, switched socket.
- Ⓢ Low level 13amp double, switched socket.
- Ⓢ High level 13amp single, switched socket.
- Ⓢ High level 13amp double, switched socket.
- Ⓢ Low level 13amp single socket.
- Ⓢ High level 13amp single socket.
- Ⓢ Immersion heater switch.
- Ⓢ Telephone point.
- Ⓢ FM aerial socket.
- Ⓢ Satellite Television aerial socket.
- Ⓢ Television aerial socket.
- Ⓢ Cable Television aerial socket.
- Ⓢ Soil & Vent Pipe.
- Ⓢ Mechanical Extract Duct.
- Ⓢ Passive System Vent.
- Ⓢ Low Voltage Halogen Light.
- Ⓢ Low Voltage Halogen Light with incandescent cone.

- Ⓢ Door bell.
- Ⓢ Bell push.
- Ⓢ Shower socket.
- Ⓢ Shower socket, strip light.
- Ⓢ Smoke Detector.
- Ⓢ Consumer unit.
- Ⓢ Cooker control unit.
- Ⓢ Electric shower.
- Ⓢ Central heating programmer.
- Ⓢ Down flow heater.
- Ⓢ Emergency Bulkhead lighting.
- Ⓢ Timed push Button
- Ⓢ Fire Door (Self closing with smoke seals).
- Ⓢ E.E.L. Emergency Wall Mounted Light.
- Ⓢ Heat Detector.
- Ⓢ Mechanical Extract.
- Ⓢ Cooker Hood Extract.
- Ⓢ Power shower.

**INTRUDER ALARM SYSTEM.**

- Ⓢ Control Panel.
- Ⓢ Key Pad.
- Ⓢ 16 Db. Internal Sander.
- Ⓢ Door Contact.
- Ⓢ Movement Sensor.