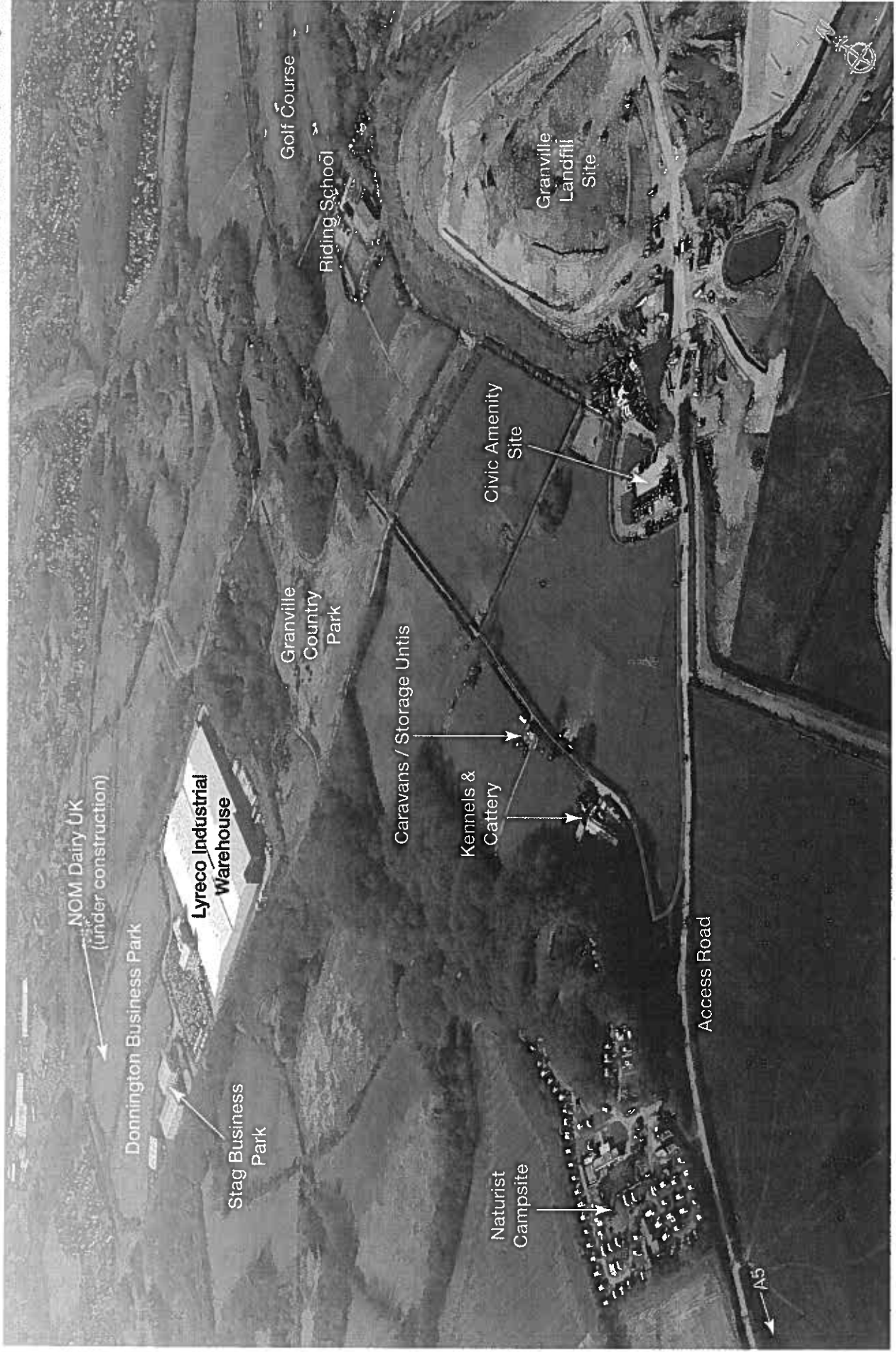


Figure 2.1: Aerial Photograph of Site

Drawn By: Adams Hendry Consulting Ltd



Photograph by Roger D Smith ABIPP, Gosport

Figure 7-4: Landscape Context  
 Drawn By: SUR Consulting Ltd

□ Site boundary



Not to Scale



Drawing AH/14 - Site Location for Validation  
 Drawn By: Adams Hendry Consulting Ltd

Application Area



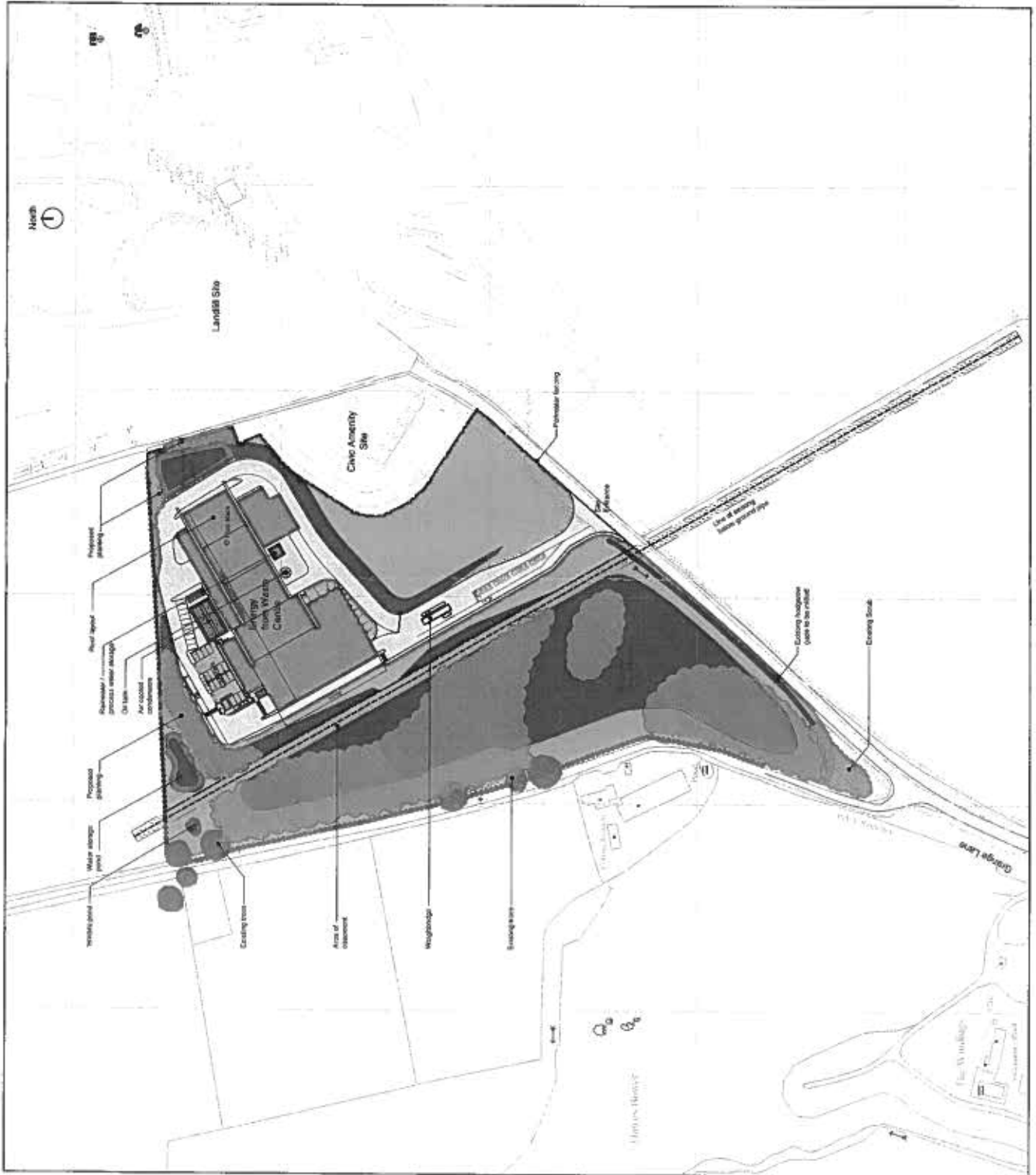
BOROUGH OF TELFORD & WREKIN  
 ENVIRONMENT & REGENERATION  
 19 SEP 2008  
**RECEIVED**

Date: 18-09-08 Scale: 1:5000  
 Based upon the Ordnance Survey 1:5000 scale map with the permission  
 of The Controller of Her Majesty's Stationery Office © Crown Copyright

Figure 3.1: Proposed Site Layout

Drawn By: RPS Group Plc

(see also landscape drawing Figure 3.6)



Scale 1:2000



100m  
Based upon the Ordnance Survey scale map with the permission of The Controller of Her Majesty's Stationery Office © Crown Copyright



Figure 3.2b: Building Elevations  
East and West

Drawn By: RFS Group Plc

Notes:  
Finished floor level is +0.00m at Process Hall Slab,  
A.O.D. +143.00  
(Above Ordnance Survey Datum)

All dimensions to external wall

All louvers subject to ventilation study

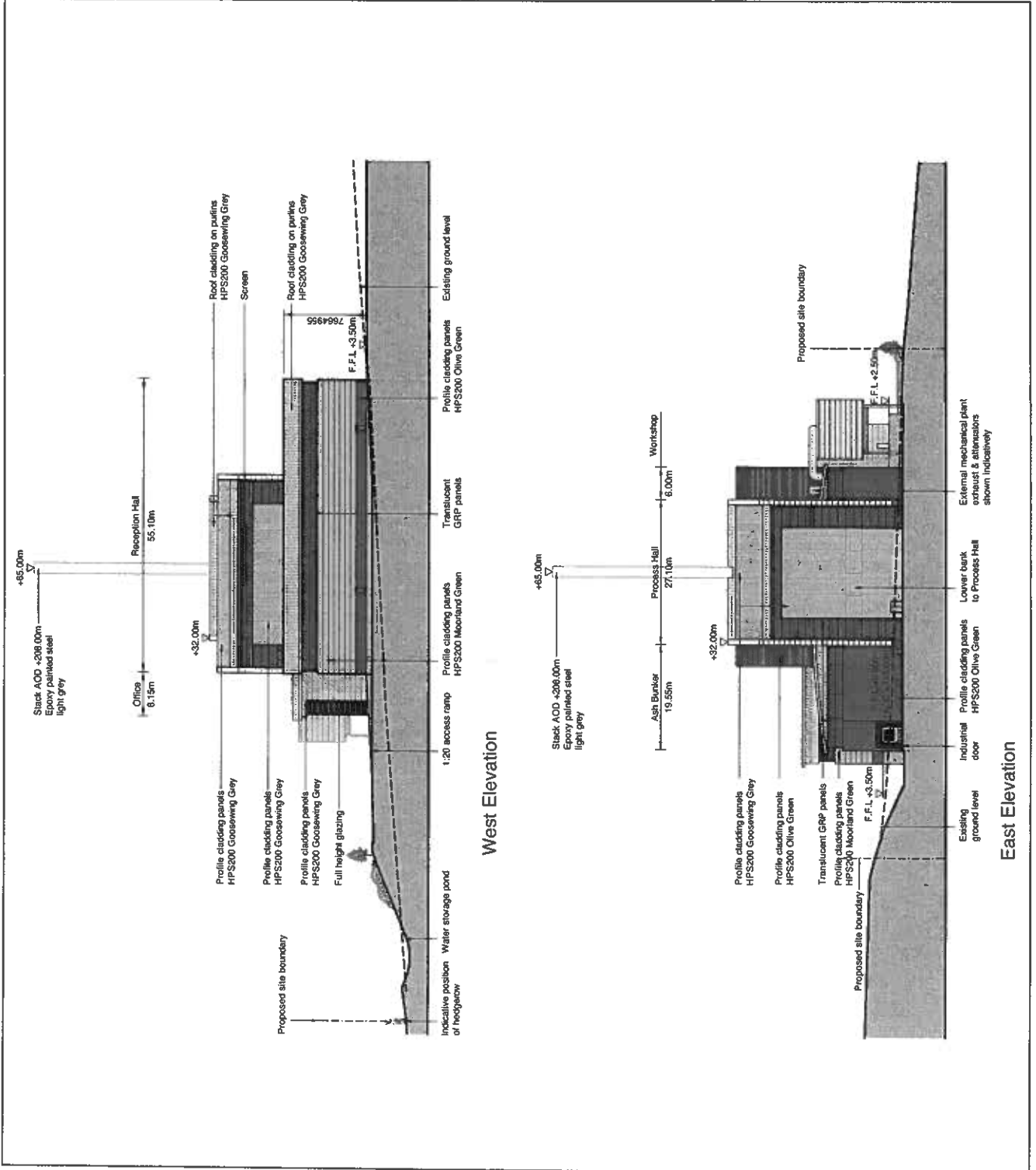


Figure 3.4: Site Layout Proposed Levels

Drawn By: RPS Group Plc

- FFL Finish Floor Level
- Proposed level
- Proposed level (Same level as existing)
- Direction of fall and approximate gradient
- Direction of vehicle circulation
- CA Civic amenity site residue area

Levels are based on Ordnance Survey Datum



Scale 1:1000  
 =500m  
 Based upon the Ordnance Survey scale map with the permission of the Controller of Her Majesty's Stationery Office. © Crown Copyright

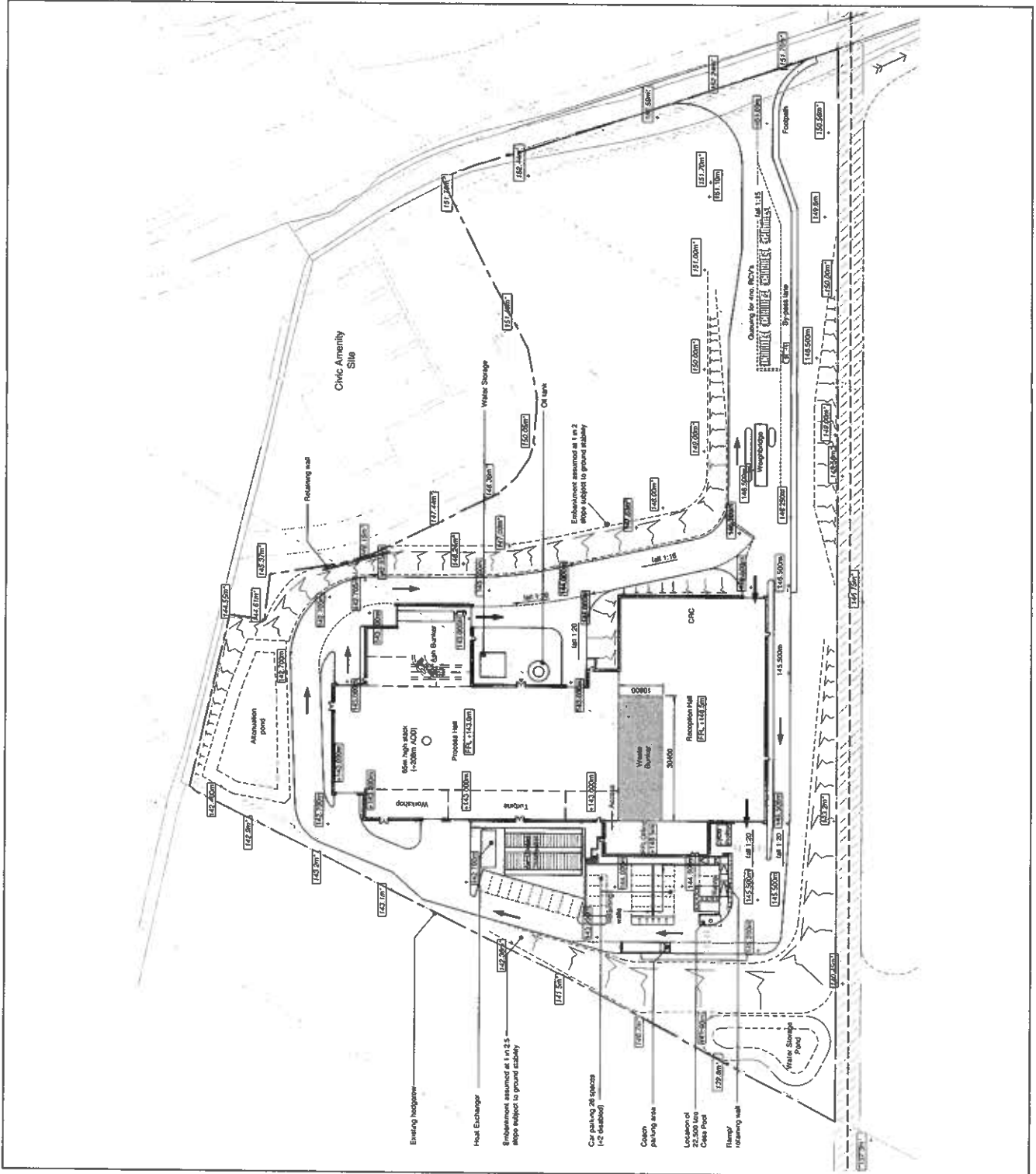


Figure 3.6: Landscape Mitigation Scheme

Drawn By: SJR Consulting Ltd

PLANTING DETAILS

Mix A - Woodland Planting  
 Species:  
 Common Nettle %  
 Common Oxeye %  
 Bramble %  
 Black 20  
 Hawthorn 15  
 Hazel 10  
 Holly 5

Mix B - Hedgerow Planting  
 Species:  
 Common Nettle %  
 Hawthorn 50  
 Blackthorn 20  
 Field Maple 15  
 Hazel 10

All trees and shrub planting to be 'rich' or 'pk' planted and protected with a suitable line / shrub stakes

Grass Seeding Mix:  
 The mix to be used for the seeding of this area would be DLF Trifolium Pro 120 'Slowgrow' which is a low maintenance mix with Ryegrass which would produce a lush, dense and effective reduced maintenance lawn. The outflow Partridge has the highest rating for slow growth, therefore reducing mowing requirements.

Species:  
 Outcrop %  
 PARADISE 80  
 SAMANTA 35  
 HIGHLAND 5

Technical Information  
 Sowing Rate: 35-50g / m<sup>2</sup> Overseeding: 25g / m<sup>2</sup>  
 Mowing Height: 72-80 mm as necessary

PLANTS / TREES - GENERAL  
 Condition: Majestically undamaged, sturdy, healthy and vigorous.  
 Appearance: Of good shape and without elongated shoots.  
 Hedging: Grown in a suitable environment and hardened off.  
 Health: Free from pests, diseases, discoloration, weeds and physiological disorders.  
 Buried or grafted plants: Bottom worked.  
 Rooting and container: Set out with a minimum branch system.  
 Species: True to name.  
 Origin/ Provenance: Local provenance.

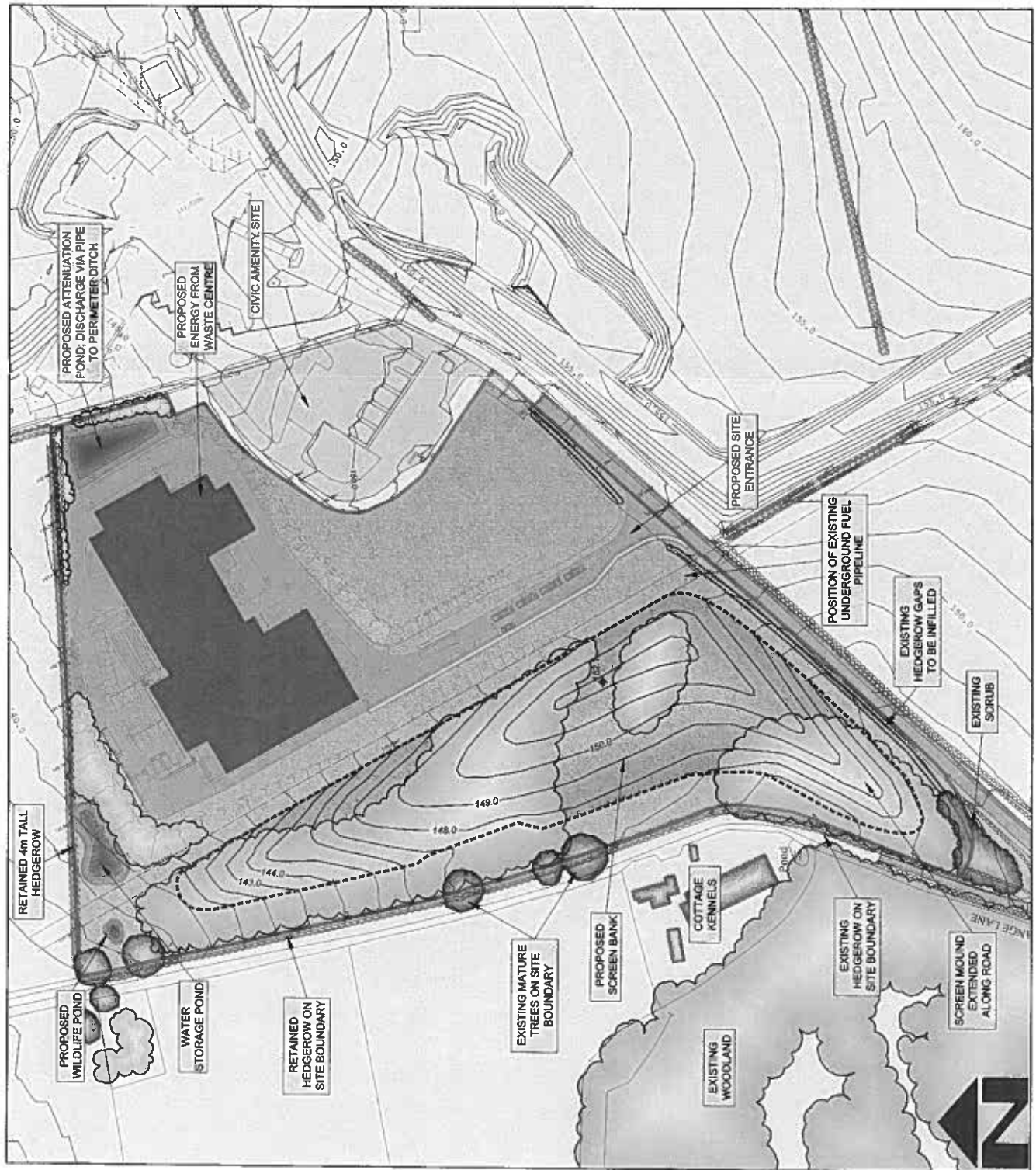
CULTIVATION OF PROPOSED PLANTING AREAS  
 Compacted topsoil: Break up to full depth.  
 Cultivation: Cultivate and break up to soil into particles of 2-8 mm to a depth of 250 mm.  
 Weeds: Remove weeds and grasses.  
 Weather and ground conditions: Slightly dry.  
 Surface: Leave regular and even.  
 Levels: Not to exceed 100mm above adjoining areas.  
 Undesirable material brought to the surface: Remove visible weeds, roots and large stones with any dimension exceeding 100 mm.  
 Soil water root: speed of trees and shrubs to be retained. Do not dig or cultivate.

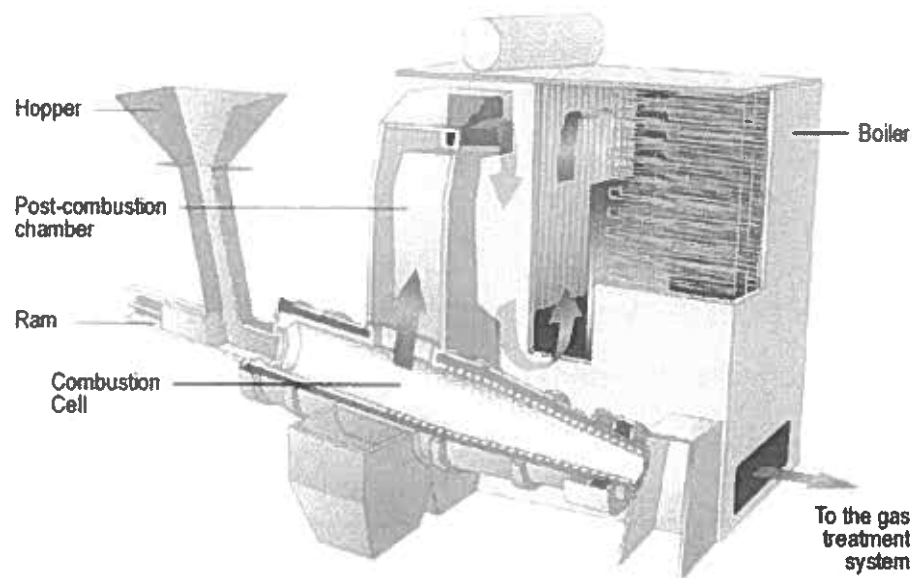
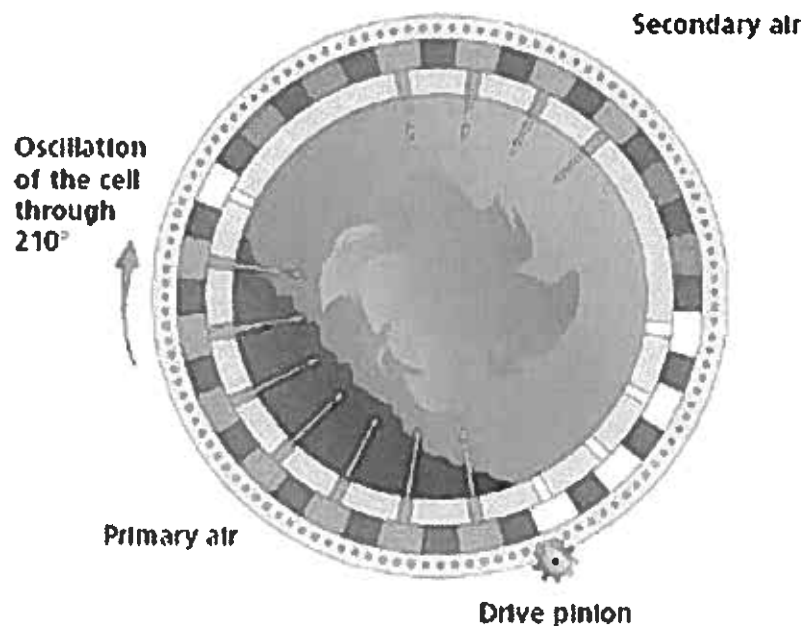
PLANTING WORK GENERALLY  
 Services: Check for below and above ground services, including land drainage, in the vicinity.  
 Give notice if they may be affected and obtain instructions before proceeding.  
 Safety: Comply with Arboriculture and Forestry Advisory Group Safety leaflets.

SETTING OUT (WOODLAND PLANTING)  
 Planting to be carried out as described below in areas shown on this drawing.  
 Planting to be carried out as described in 'Creating New Native Woodland' Forestry Commission Bulletin 12, 1994. Species to be planted in single species groups of 5-12 in a run but at 1-1.5 metre intervals with gaps, this would be consistent with an average spacing of 2 metres.

PLANTING MAINTENANCE GENERALLY  
 Broken or missing items: Replace.  
 Broken or missing items: Replace.  
 Broken or missing items: Replace.

Watering: As required / agreed in schedule.



**Figure 3.8 Longitudinal section of a complete combustor****Figure 3.9 Cross Section of the Combustion Cell**

3.27 Municipal Solid Waste (MSW) is a very variable fuel for a combustion process and contains a variety of sizes and shapes of materials, not all of which are combustible. The oscillating kiln rocks slowly backwards and forwards on its longitudinal axis and this motion causes the waste inside the kiln to roll around and break up. This constantly provides fresh material at the surface for combustion and ensures a very efficient burn.

3.28 Waste is fed in at one end and the rocking motion of the kiln causes it to gradually move down the length, by the time the waste has reached the end