

West Mercia SARC

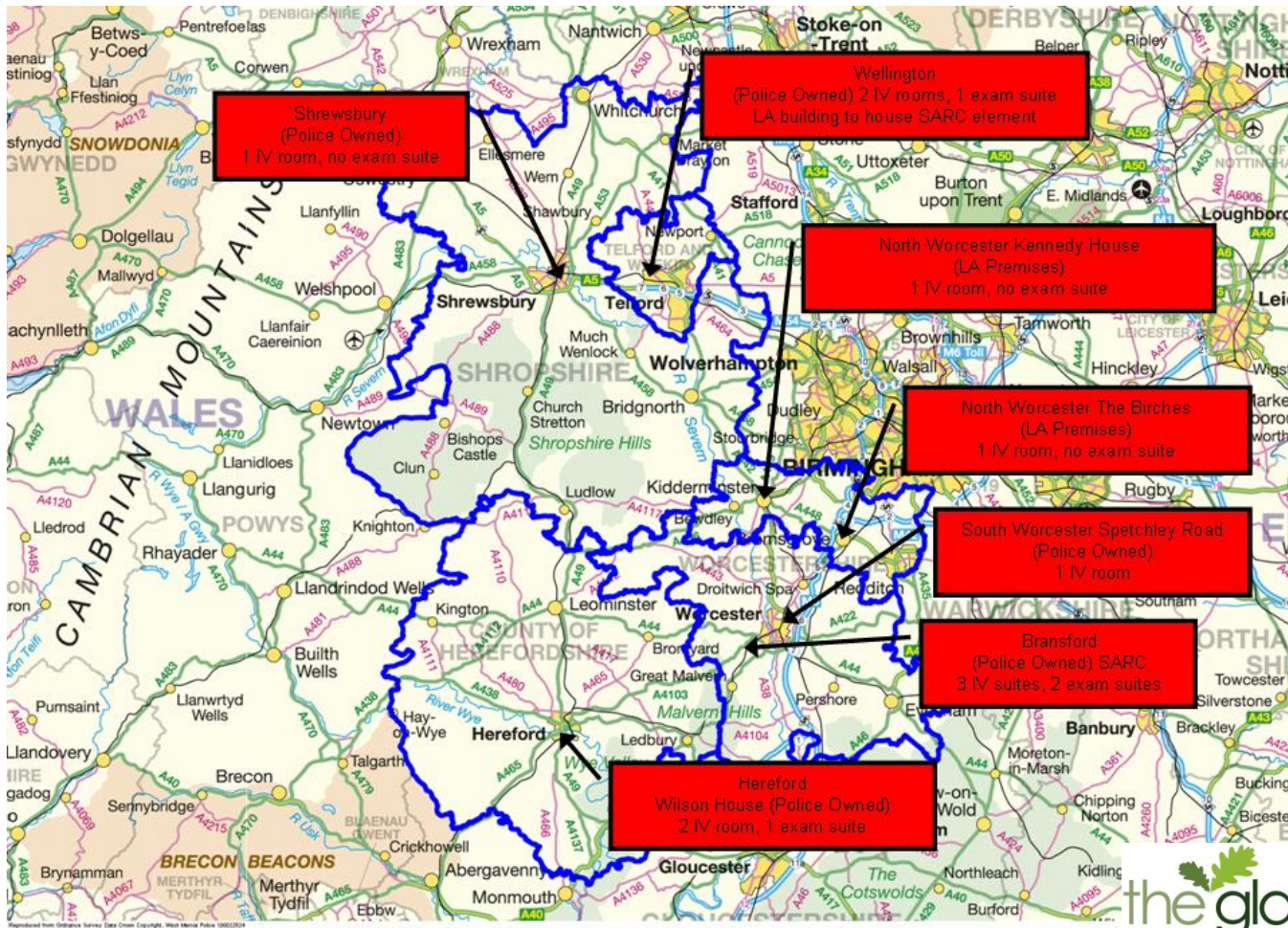


the glade

Objectives

- To provide a holistic service for all victims of rape and serious sexual abuse.
- To ensure all victims have access to services.
- To provide a cost effective and sustainable service.
- To ensure services are within reach for all victims in our communities.
- To promote the recovery and health of victims following a rape.
- To streamline pathways to care.
- To improve confidence in the community to seek support after rape.
- To provide 24hr support
- To provide ability to self refer

Locations



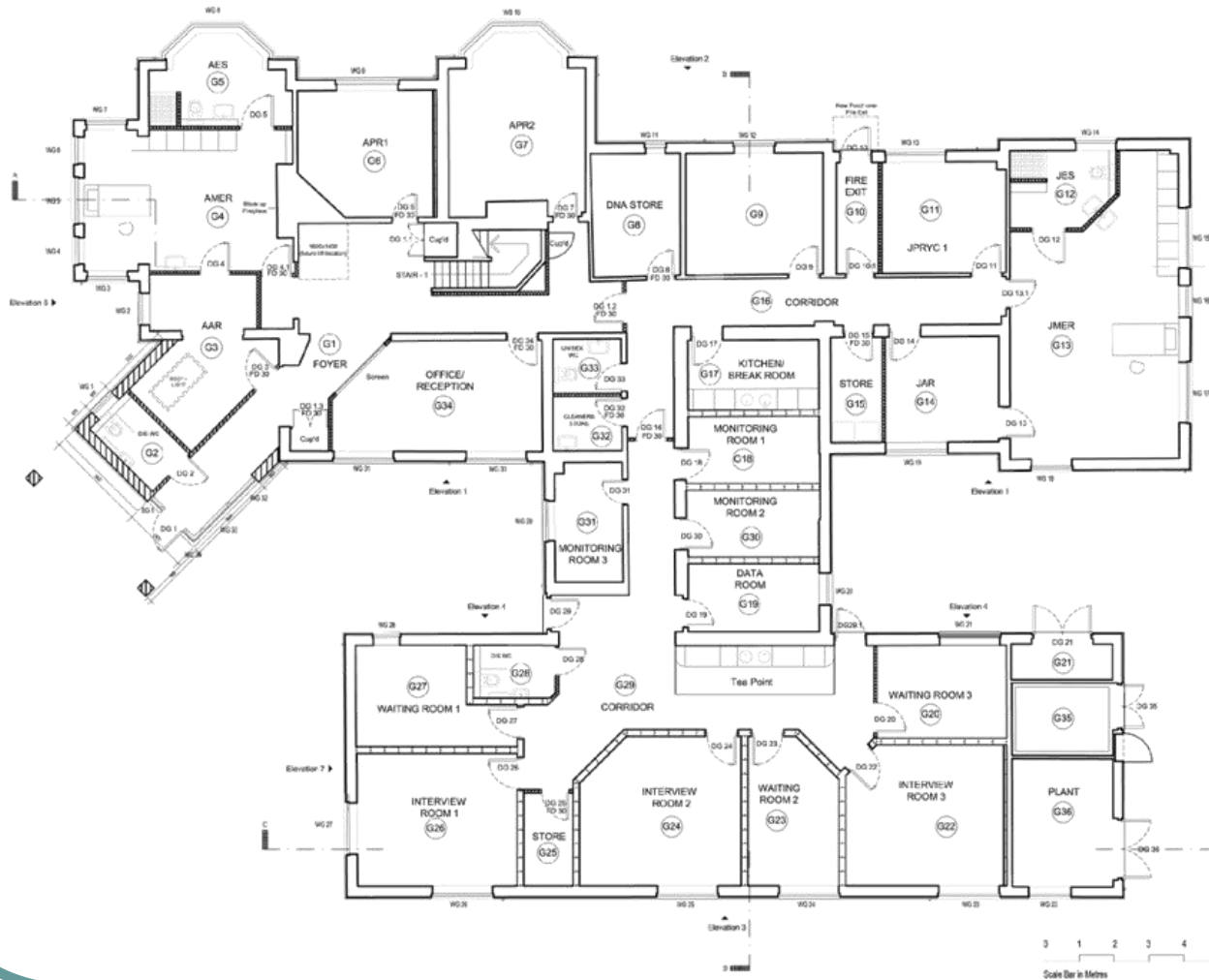
RESTRICTED

Bransford

- 4 miles south of Worcs
- A4103
- 2 forensic suites
- Offices
- Counselling space
- Parking
- Significant investment into building
- New interview facility



Ground Floor Plan



GENERAL
 A TRAD (DRAWING) ORIGIN AND THE SUBSTANTIVE WORKS ARE
 COPYRIGHT OF BRUNTON & PYLE ARCHITECTS AND MAY NOT
 BE REPRODUCED BY A THIRD PARTY WITHOUT WRITING
 CONSENT.



(PROTECT-CONTRACTS)

Elevation 5
B O U G H T O M
B U Y L I C E R
 Architects Planning & Sustainability
 The Design Studio
 3 Spence Walk
 Weymouth
 Dorset DT99 2JH
 Tel: 01305 23284 Fax: 01305 22888
 Email: info@boughtom.co.uk
 Web: www.boughtom.co.uk

Client
West Mercia Police

Project
**Works to Former
 Ambulance Control Centre**

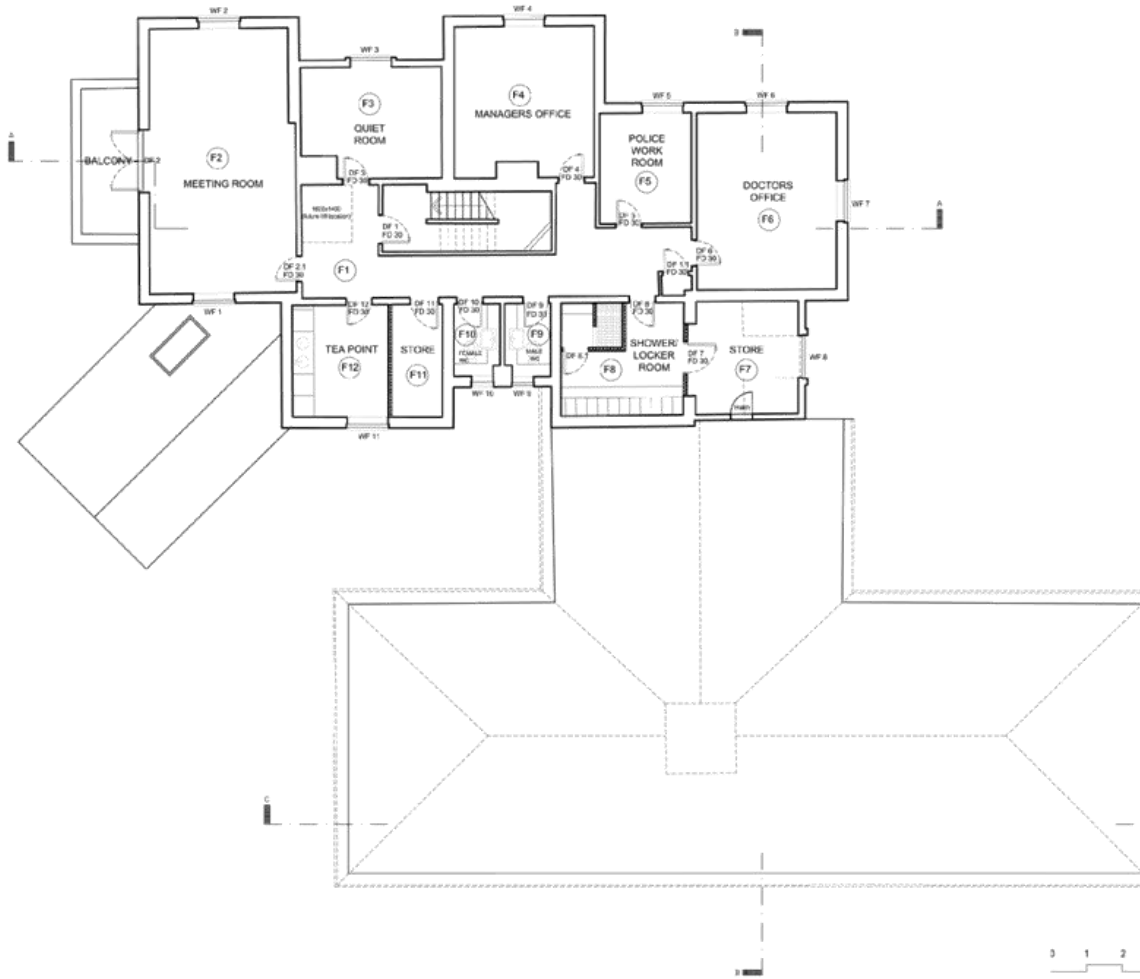
Title
**Ground Floor Plan,
 Proposed Layout**



Job No. 1131
 Dwg No. 200
 Rev. C2



First Floor Plan



GENERAL
 © THIS DRAWING, DESIGN AND THE ILLUSTRATED WORKS ARE
 COPYRIGHT OF BRIGHTON BUTLER ARCHITECTS AND MAY NOT
 BE REPRODUCED BY A THIRD PARTY WITHOUT WRITTEN
 CONSENT.



(PROTECT-CONTRACTS)

**B R O U G H T O N
 B U T L E R**

The Design Studio
 6 Seaview Walk
 Brighton
 BN1 1JH

Tel: (01293) 729944 Fax: (01293) 728880
 Email: info@brightonbutler.co.uk
 Web: www.brightonbutler.co.uk

Client
 West Mercia Police

Project
 Works to Former
 Ambulance Control Centre

Title
 First Floor Plan,
 Proposed Layout



Job No. 1131
 Dwg No. 201
 Rev. C2

Wellington

- West Road
- Use of existing facilities
- Conversion of space rented for SARC purposes
- On call facility
- Counselling space
- Good access for the North

Key Elements of the Service

- 24 hour access
- Crisis workers
- Choice of gender of Physician wherever possible
- Access to forensic Physicians
- Dedicated forensically approved premises
- Medical consultation including a risk assessment
- Immediate access to EHC PEP and follow up as needed
- Minimum dataset and appropriate data collection
- Coordinated interagency arrangements
- Access to ISVA
- Access to counselling

The benefits

- Victims seen in a dedicated caring setting
- Victim pathways clear between agencies, providing victims with more efficient service.
- Dedicated trained staff to complete full assessment of needs
- At Bransford a dedicated Paediatric suite with separate U10 and YP recovery rooms
- Clinical Governance of staff and forensic examinations.
- A 'One Stop Shop'

Any Questions

Launch date 9th Nov



Drinking is not a crime. Rape is.

