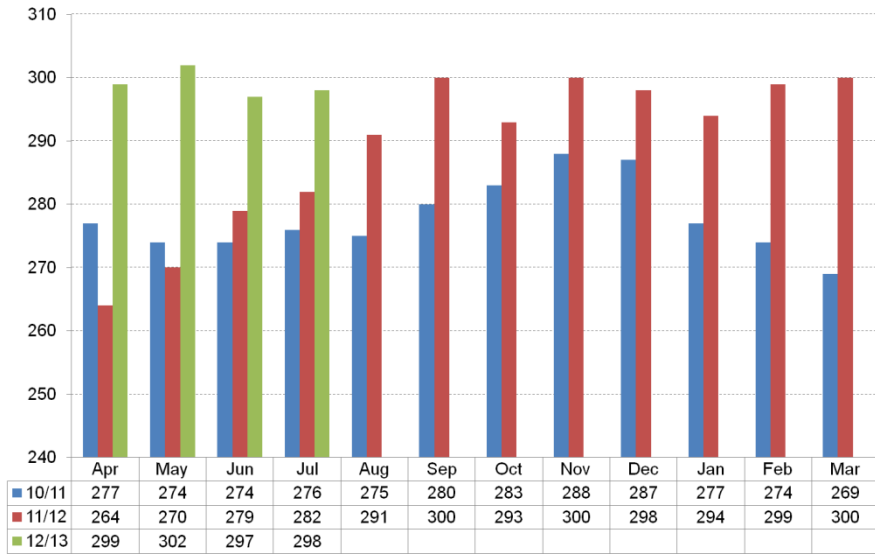


CHILDREN IN CARE – MONTHLY PERFORMANCE DASHBOARD 31/7/2012

Children In Care at Month End



The average number of children in care (monthly) for Aug 2010-Jul 2011 was 277. For the same period in 2011/2012 the average number of children in care monthly was 297. This is a 7.2% increase.

New Children In Care by Age Group and by percentage of CIC population (Based on a rolling year)

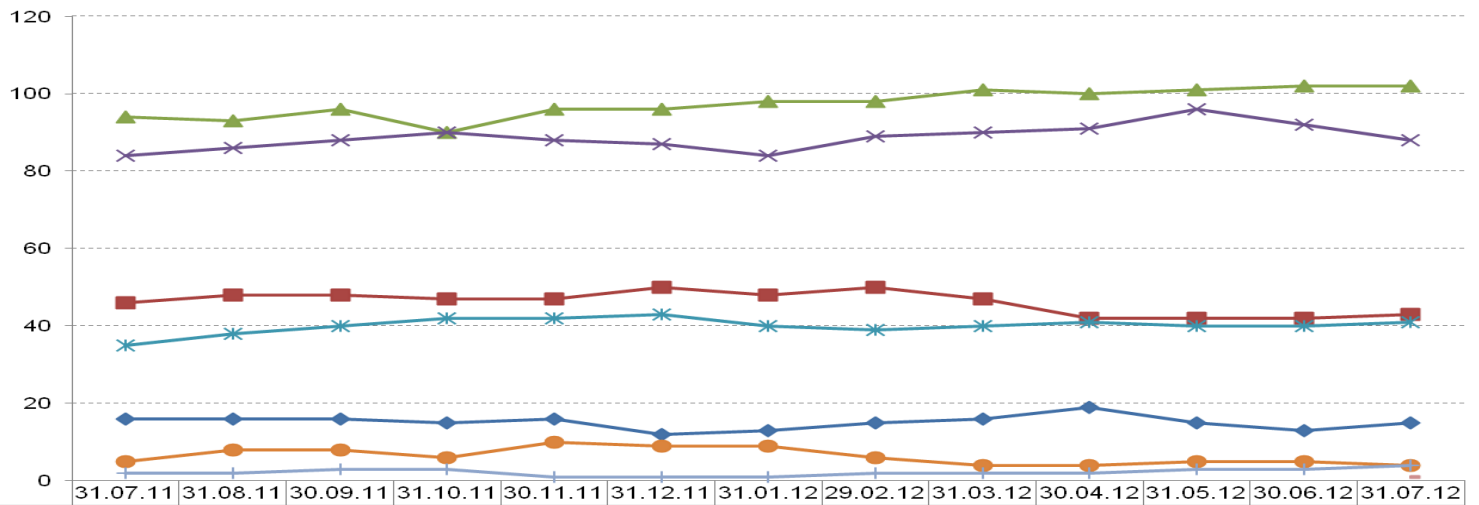
	01/08/09 - 31/07/10	% of new CIC	01/08/10 - 31/07/11	% of new CIC	01/08/11 - 31/07/12	% of new CIC
Under 1	36	34.3%	30	24.8%	33	24%
1-4 Years	12	11.4%	26	21.5%	36	26%
5-9 Years	9	8.6%	30	24.8%	23	16%
10-15 Years	43	41.0%	32	26.4%	45	32%
16+ Years	5	4.7%	3	2.5%	3	2%
	105		121		140	

Based on data for a rolling year the percentage of children coming into care aged 10-15 between 10/11 and 11/12 has increased from 26.4% to 32%, (13 young people). Overall numbers of new episodes of care have increased significantly in 2011/12, but the running total remains stable since Sept 2011 as we are better at moving on their care plans to a return home or other permanent alternative to care. The number of under 5's coming into care has risen slightly in comparison to previous years in the same period (Previously approx 45-46% and now account for 50% of new CIC)

Cessations in 2011-2012 split by age and reason

	Cessations in 2011-2012 split by age and reason						Total Cessations Apr-Jul 2012	
	Under 1	1-4 Years	5-9 Years	10-15 Years	16+ Years	Grand Total		% of total cessations
E11 - Adopted – application unopposed	1	4	1			6	4.8%	3 (7%)
E12 - Adopted, consent dispensed with		19	1			20	16.1%	5 (12%)
E4 - Returned home to live with parents (no order)	5	15	12	27	2	61	49.2%	18 (43%)
E41 - Returned home - Residence order				1		1	0.8%	2 (5%)
E43 - Special guardianship order made to former foster carers		6				6	4.8%	2 (5%)
E44 - Special guardianship order made to carers other than former foster carers							0%	1 (2%)
E5 - Independent arrangement with formalised support					18	18	14.6%	7 (17%)
E6 - Independent arrangement (no formalised support)		1			2	3	2.4%	
E7 - Transferred to adult social services					2	2	1.6%	1 (2%)
E8 - CLA ceased for any other reason	1	1	2	1	1	6	4.8%	3 (7%)
E9 - Sentenced to custody				1		1	0.8%	
Grand Total	7	46	16	30	25	124		42

**Children In Care / Supportive Accommodation at Month End
by Placement Type (based on a rolling year)**



Placement Type	31.07.11	31.08.11	30.09.11	31.10.11	30.11.11	31.12.11	31.01.12	29.02.12	31.03.12	30.04.12	31.05.12	30.06.12	31.07.12
Placed for Adoption	16	16	16	15	16	12	13	15	16	19	15	13	15
Q1 - Rel/Friend	46	48	48	47	47	50	48	50	47	42	42	42	43
Q2 - Local Auth Carer	94	93	96	90	96	96	98	98	101	100	101	102	102
Q2 - Agency Carer	84	86	88	90	88	87	84	89	90	91	96	92	88
Residential Placements	35	38	40	42	42	43	40	39	40	41	40	40	41
P1 - Placed with Parents	5	8	8	6	10	9	9	6	4	4	5	5	4
P2 - Supportive Lodgings	2	2	3	3	1	1	1	2	2	2	3	3	4
Z1 - Other Placement													1

Placement Type	Children in Care at 31.03.12	Weekly Unit Cost 2011/12	Children in Care at 30.04.12	Weekly Unit Cost April 2012	Children in Care at 30.06.12	Weekly Unit Cost June 2012	Children in Care at 31.07.12	Weekly Unit Cost July 2012
Placed for Adoption	16	N/A	19	N/A	15	N/A	15	N/A
Relative/Friend Carer	47	£225	42	£237	42	£234	43	£233
LA Carer	101	£279	100	£291	102	£274	102	£278
Agency Foster Carer	90	£798	90	£808	92	£809	88	£808
Residential Placements	40	£3,493	40	£3,141	40	£3,097	41	£3,054
Placed with Parents	4	N/A	4	N/A	5	N/A	4	N/A
Supportive Lodgings	2	N/A	2	N/A	3	N/A	4	N/A
Other Placement							1	N/A
TOTAL =	300	*£832	299	*£804	299	*£813	298	*£800

34.2% of children were placed in LA foster Care at end of July 2012 which is a slight increase from the same point last year (33.3%).

Overall 78.2% (232) of our looked after children are placed in foster care, including relative/ friend carers, in comparison to 79.4% (2011) who were in foster care at the same point last year

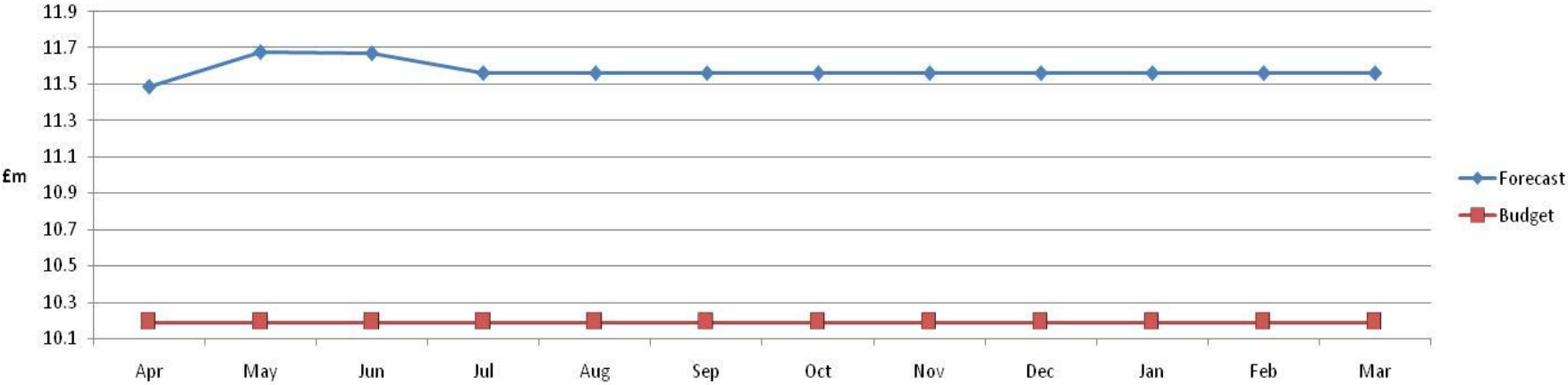
Of the 41 children and young people in residential placements, 16 are in specialist care, including 2 in hospitals and 2 in secure.

The 'other placement' referred to in the table is for a young person who is due to turn 18 who has moved to a placement supported by adults services.

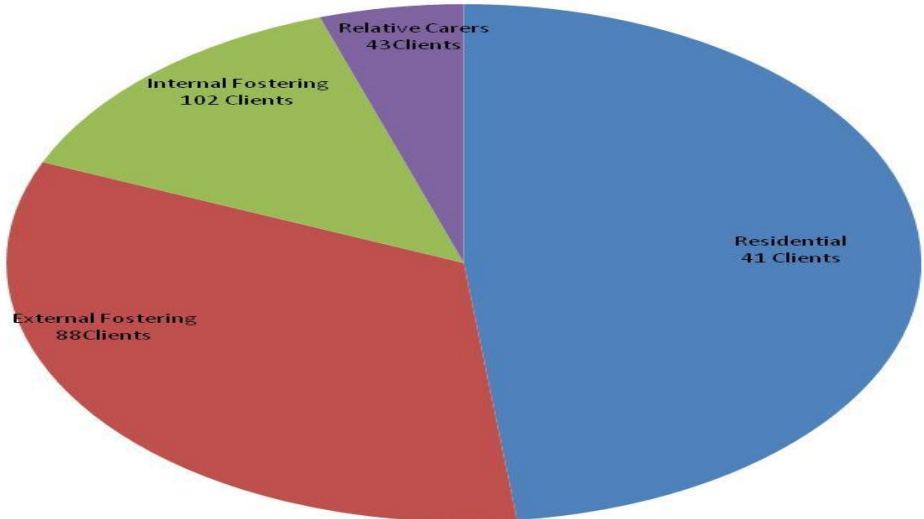
* **The Total weekly unit cost** is calculated by dividing the full year forecast for all placements by the total number of weeks forecast for all placements.

Placement Cost Analysis – Year 2012/2013

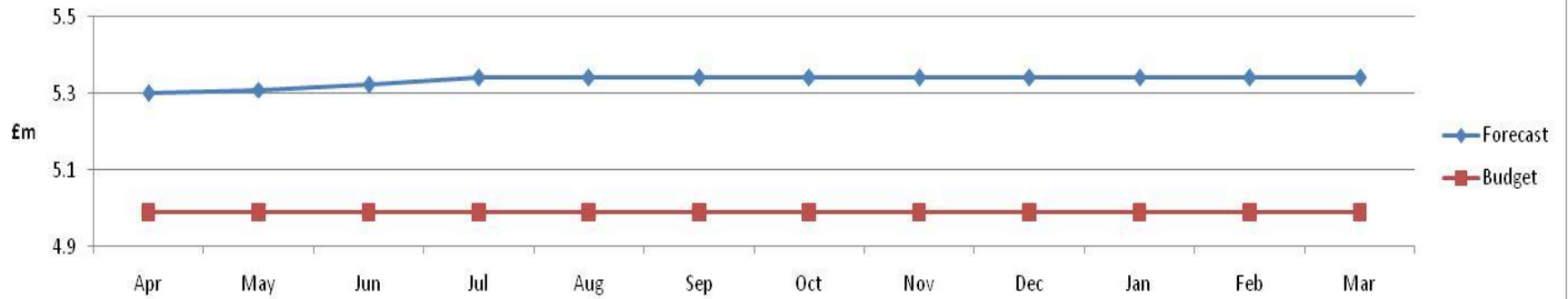
Total Placement Costs



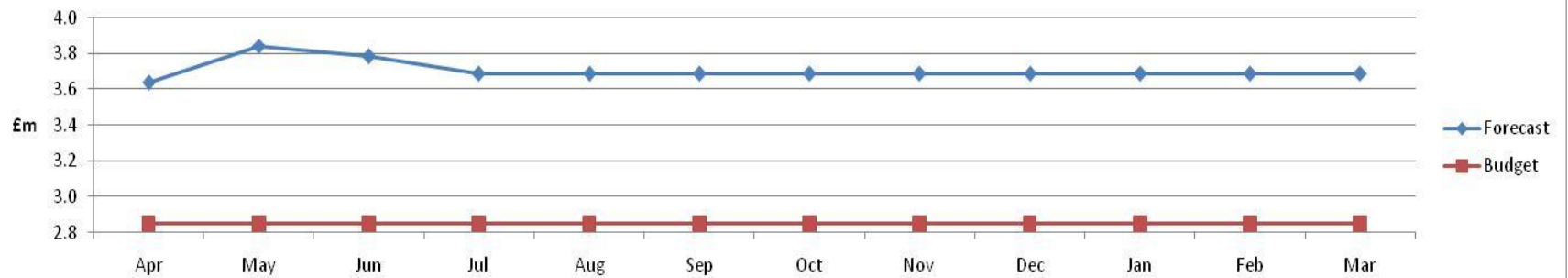
Total Cost of Placements 2012/13



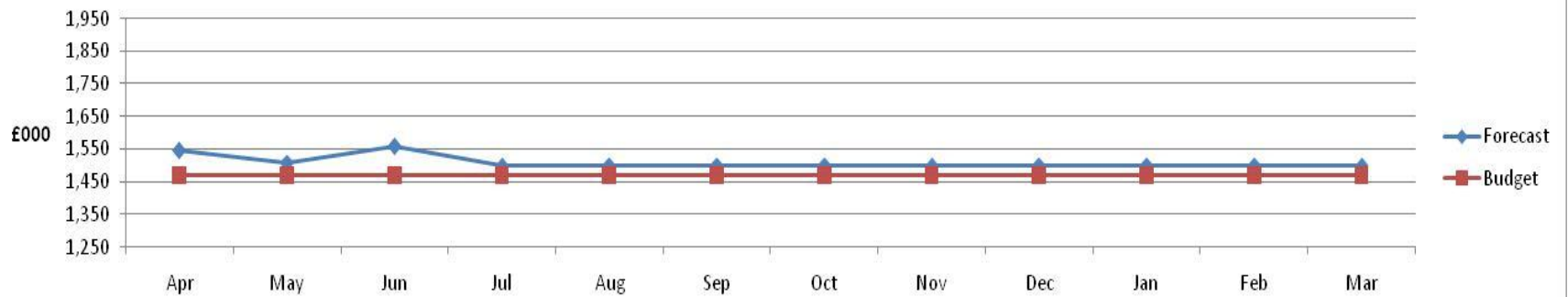
Residential



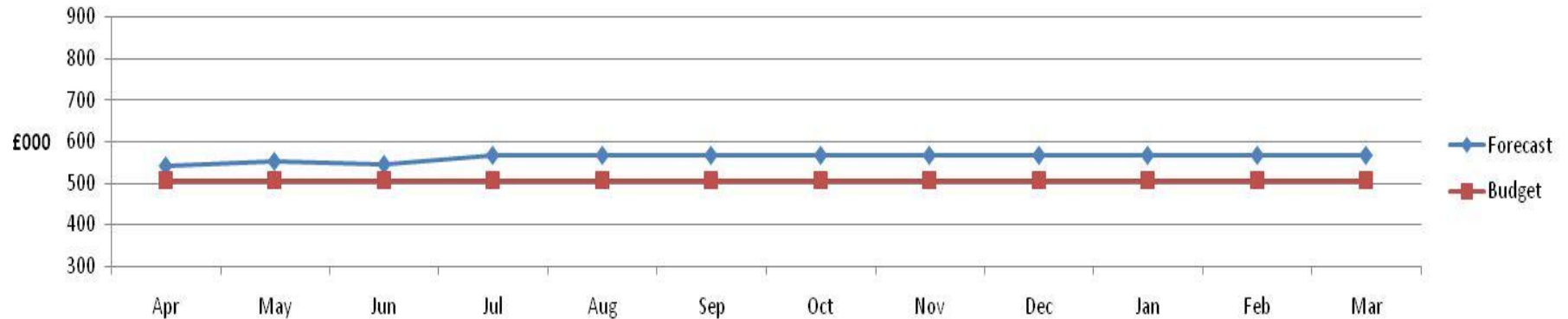
External Fostering



Internal Fostering



Relative Carers



Key examples of progress on delivery of action plan to reduce numbers of CIC and costs

Early Intervention

Analysis of issues being referred to the Helpdesk and case audits by children's Service Delivery Managers shaping implementation of Family Connect and access to other Family and Cohesion services. Family Connect base established, Helpdesk relocated and rebranded within Family Connect. Triage being implemented within FC from October 2012.

Commissioning and Procurement

Regional residential placements Contracting Framework now in place (reduced costs of individual placements) Renegotiation of care costs of Jigsaw complete. Two Quality Monitoring Officers have now been added to the team to check that contract terms are being met. Working group set up to remodel previous long term residential care home at Jigsaw to develop into a short term assessment home.

Safeguarding and Corporate Parenting

Workshops planned to develop new model of working for Child Protection conferences which focuses on the child's lived experience. Agreement within safeguarding of planned analysis of themes to speed up care planning to achieve some kind of permanent placement for children in care – including safe return home. Weekly challenge by AD regarding care plans for new CIC

Improvements in Internal Provision

Review of reports to Foster Panel completed to release additional staff capacity to assess and support council foster carers Report to Cabinet to increase allowances for internal foster carers equivalent to competitors

Performance Area	Target	July 2012	Rolling Year Data	Status and Comments	2011/2012	Good performance direction
% of LAC aged 10-16 in foster placement or placed for adoption	80%	77.5% (86/111)	N/A	The percentage of children placed in a foster placement or for adoption is slightly lower than at year end.	78% (89/114)	Higher = Better
The percentage of sessions missed due to overall absences for children who have been looked after for at least twelve months at 31 March	No Target Set	Not yet available	N/A	Information taken from adoption scorecard. Latest data available is March 2011, where T&W were ranked 17 th (Best performance ranked as number one)	3%	Lower = Better
Number of looked after children adopted during the year as a percentage of the number of children looked after 6 months plus as month end	12%	4.3% (11/258)	Number adopted 01/08/10 – 31/07/11 39 01/07/11 – 31/07/12 26	At the same point last year 7.4% (17 children) had been adopted between 01/04/2012 and 31/07/2012. (This includes 3 Special Guardianship Orders) As at 31 July 15 children are placed for adoption. Further Analysis is being done to understand whether we will meet our target and if not, why not	12.8% (32/250)	Higher = Better
Adoptions within best interest timescales	100%	100% (8/8)	N/A	Please note that the 11 in the previous indicator (number of adoptions includes three special guardianship orders which is the criteria for that indicator)	96.1% (25/26)	Higher = Better
New foster care households approved in the year)	14 New households 18 new places	Net Approvals 1 Households 1 Placements	Net - 01/08/10 – 31/07/11 01/08/11 – 31/07/12	Between 01/04/2012 and 31/07/2012 we approved 7 households – 3 Mainstream and 4 Kinship. (7 Kinship and 2 Mainstream were de-registered). Therefore this shows a net gain of 1 Mainstream household. 6 of the 7 deregistration of kinship carers are households who have not cared for a child since 2011. Further analysis is being completed to predict likely approvals for the remainder of this year. (Deregistrations are harder to predict)	Net Approvals 12 Households 11 Places	Higher = Better
% of children with 3 placements plus in the year (this includes repeat episodes of care)	8%	1% 3/298	01/08/10 – 31/07/11 9.7% (29/298) 01/08/11 – 31/07/12 8.9% (25/282)	As at the end of July 2012, 3/298 children had three placements plus This mirrors the same point last year when 3/284 children had three placements plus. (There were 31 children on 2 placements as at 31/07/2012).	8.3% (25/300)	Lower = Better
CIC for 2.5 years with same placement for 2 years	79%	77.8% (81/104)	N/A	As at the same point in the previous year (July 2011) 73% of children who had been looked after for 2.5 years were in placement for two years.	79.2% (84/106)	Higher = Better

Ethnicity of Children In Care

	No of BME	Population	%
Children in Care from a BME background as at 31/07/2012	40	298	13.4%
Foster Carers from a BME background as at 31/07/2012	9	229	3.9%
% of BME children placed with LA Foster Carers from a BME background as at 31/07/2012	5	38	7.9%
% of children in T&W from a BME Group taken from 2010 School Census	2721	21926	12.4%

At the end of July 2012, 31 children in care were from a Black or minority ethnic (BME) background.

24 of these children are placed in LA foster care. Of these 5 are placed with BME carers.

7 of these children are placed with agency foster carers, 2 of which are placed with BME carers.

There are nine carers from a BME background this relates to 7 households.

12.8% of the CIC population are from a BME background and 3.9 % of fostering households are from a BME background.

Disabled Children that are looked after, with placement breakdown

Type of Placement	Mar-10	Mar-11	Mar-12	Jul-12
LA Foster Carer	51.72%	53.57%	37.14%	41%
Agency Foster Carer	3.45%	7.14%	17.14%	15.4%
Homes & Hostels	31.03%	28.57%	37.14%	33.3%
Relative/Friend	13.79%	10.71%	8.57%	7.7%
Other Placement (Adult placement)				2.6%

As at the end of July 2012, there were 39 children with a disability who were looked after. 64.1% are placed in foster care in total (including relative carers). 2 children are allocated to the Children In Care team and the rest are allocated to workers in the Disabled Children's Team.

Of the 13 placed in residential care, 5 have been in care for less than a year, 2 have been in care for between 1-2 years, 1 has been in care for just over 2 years and 5 have been in care for 3 years plus, Of these children 7 have been in the same placement for more than 1 year.

Of the 25 children in foster care, 3 have been in care for under 1 year, 2 have been in care for 1-2 years, 3 have been in care for between 2 and 3 years and 17 of the children have been in care for three years plus. Of these, 22 have been in the same placement for one year plus.

The young person in an 'other placement' has recently been moved to an adults supported placement as she is due to turn 18.