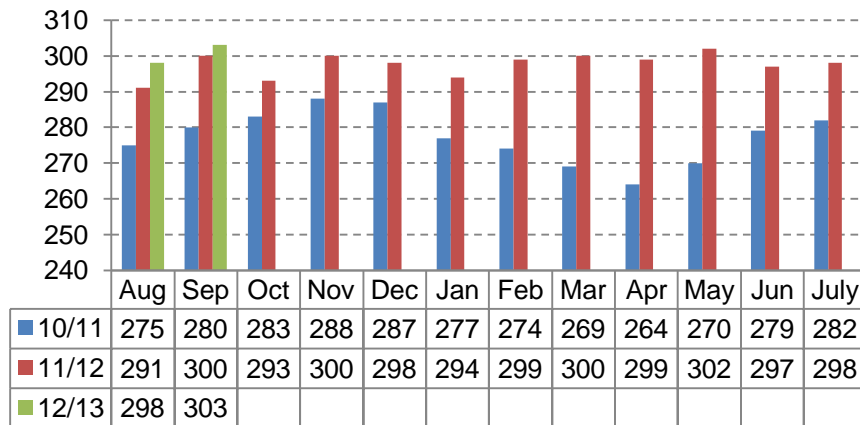


# CHILDREN IN CARE – MONTHLY PERFORMANCE DASHBOARD 31/8/2012

## Children In Care at Month End (September 2010 - September 2012)



From Oct 10 – Sep 11 the average number of children in care monthly was 280. From Oct 11 – Sep 12 the average number of children in care was 298. This is a 6.4% increase,

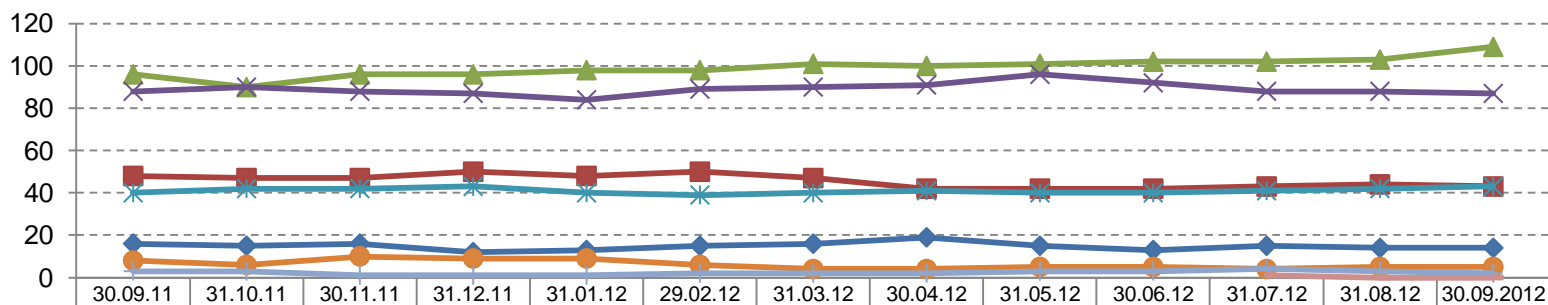
## New Children In Care Episodes by Age Group and by percentage of CIC population (Based on a rolling year)

	01/10/09 – 30/09/10	% of new CIC	01/10/10 – 30/09/10	% of new CIC	01/10/11 – 30/09/12	% of new CIC
Under 1	36	32.7%	31	24.2%	30	23.3%
1-4 Years	19	17.3%	24	18.8%	34	26.4%
5-9 Years	12	10.9%	31	24.2%	23	17.8%
10-15 Years	39	35.5%	39	30.5%	39	30.2%
16+ Years	4	3.6%	3	2.3%	3	2.3%
	<b>110</b>		<b>128</b>		<b>129</b>	

In comparison to the same period last year, latest data shows a increase in the percentage of 1-4 year olds coming into care and a decrease in the percentage of 5-9 years olds coming into care. The proportion of other age groups remains consistent with last year.

	Cessations in 2011-2012 split by age and reason							Total Cessations Apr- Sep 2012
	Under 1	1-4 Years	5-9 Years	10-15 Years	16+ Years	Grand Total	% of total cessations	
E11 - Adopted – application unopposed	1	4	1			6	4.8%	6 (10.7%)
E12 - Adopted, consent dispensed with		19	1			20	16.1%	6 (10.7%)
E4 - Returned home to live with parents (no order)	5	15	12	27	2	61	49.2%	20 (35.7%)
E41 - Returned home - Residence order				1		1	0.8%	3 (5.4%)
E43 - Special guardianship order made to former foster carers		6				6	4.8%	2 (3.6%)
E44 - Special guardianship order made to carers other than former foster carers							0%	1 (1.8%)
E5 - Independent arrangement with formalised support					18	18	14.6%	10 (17.9%)
E6 - Independent arrangement (no formalised support)		1			2	3	2.4%	
E7 - Transferred to adult social services					2	2	1.6%	3 (5.4%)
E8 - CLA ceased for any other reason	1	1	2	1	1	6	4.8%	5 (8.9%)
E9 - Sentenced to custody				1		1	0.8%	
Grand Total	7	46	16	30	25	124		56

## Children In Care / Supportive Accommodation at Month End by Placement Type (based on a rolling year)



Placed for Adoption	16	15	16	12	13	15	16	19	15	13	15	14	14
Q1 - Rel/Friend	48	47	47	50	48	50	47	42	42	42	43	44	43
Q2 - Local Auth Carer	96	90	96	96	98	98	101	100	101	102	102	103	109
Q2 - Agency Carer	88	90	88	87	84	89	90	91	96	92	88	88	87
Residential Placements	40	42	42	43	40	39	40	41	40	40	41	42	43
P1 - Placed with Parents	8	6	10	9	9	6	4	4	5	5	4	5	5
P2 - Supportive Lodgings	3	3	1	1	1	2	2	2	3	3	4	3	2
Z1 - Other Placement											1	0	0

Placement Type	Children in Care at 31.03.12	Weekly Unit Cost 2011/12	Children in Care at 31.07.12	Weekly Unit Cost 31.07.12	Children in Care at 31.08.12	Weekly Unit Cost 31.08.12	Children in Care at 30.09.12	Weekly Unit Cost 30.09.12
Placed for Adoption	16	N/A	15	N/A	14	N/A	14	N/A
Relative/Friend Carer	47	£225	43	£233	44	£229	43	£240
LA Carer	101	£279	102	£278	103	£280	109	£272
Agency Foster Carer	90	£798	88	£808	88	£807	87	£806
Residential Placements	40	£3,493	41	£3,054	42	£3,016	43	£3,002
Placed with Parents	4	N/A	4	N/A	5	N/A	5	N/A
Supportive Lodgings	2	N/A	4	N/A	3	N/A	2	N/A
Other Placement			1	N/A	0	N/A	0	N/A
<b>TOTAL =</b>	<b>300</b>	<b>*£832</b>	<b>298</b>	<b>*£800</b>	<b>299</b>	<b>£804</b>	<b>303</b>	<b>£790</b>

36% of children were placed in LA foster Care at end of September 2012 which is an increase from the same point last year (32.1%).

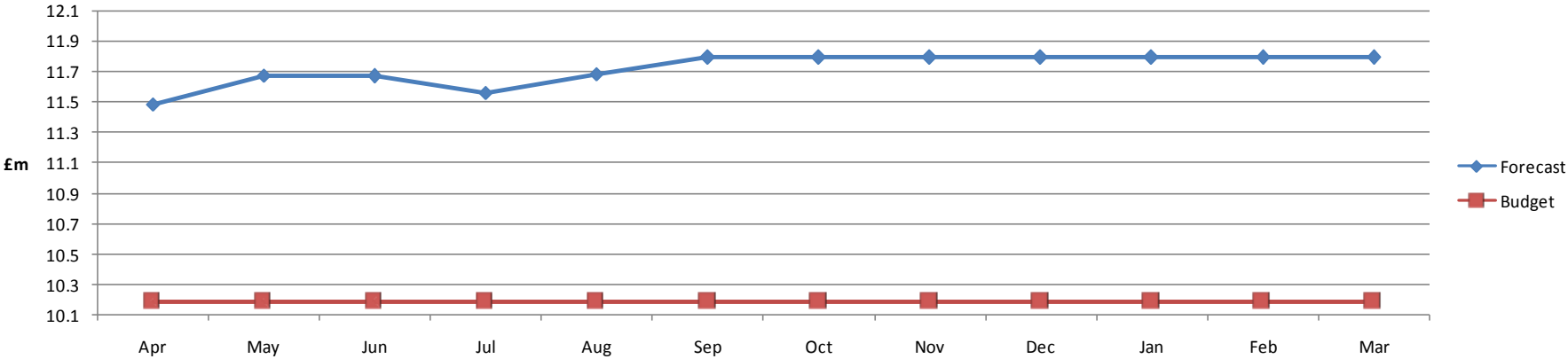
Overall 78.9% (239) of our looked after children are placed in foster care, including relative/ friend carers, this mirrors the same point last year (232 – 77.6%)

The percentage of children in residential homes as at the end of September 2012 (14.2%) is slightly higher than at the same point last year (40/299 – 13.4%)

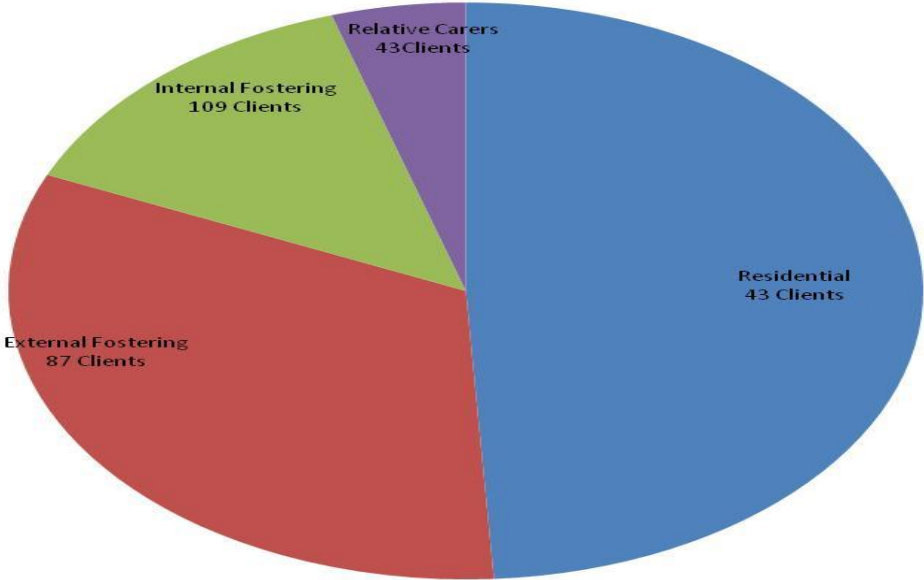
\* **The Total weekly unit cost** is calculated by dividing the full year forecast for all placements by the total number of weeks forecast for all placements.

# Placement Cost Analysis – Year 2012/2013

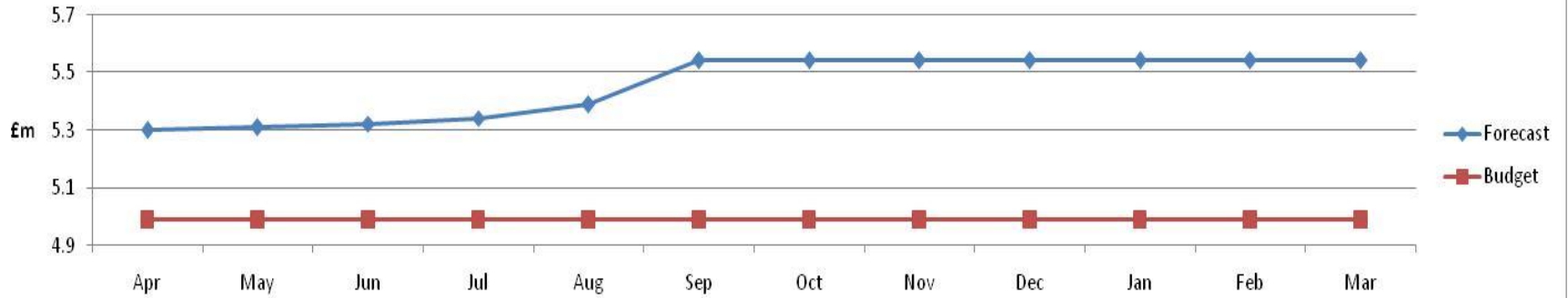
## Total Placement Costs



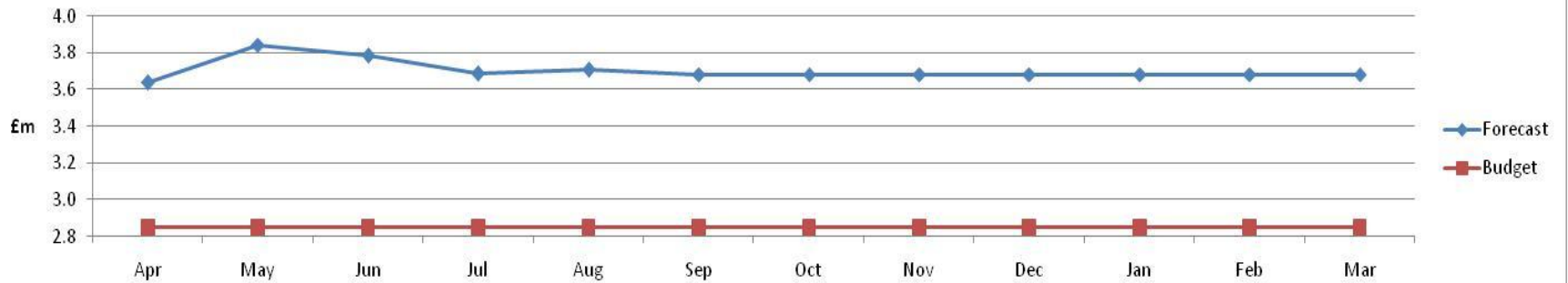
## Total Cost of Placements 2012/13



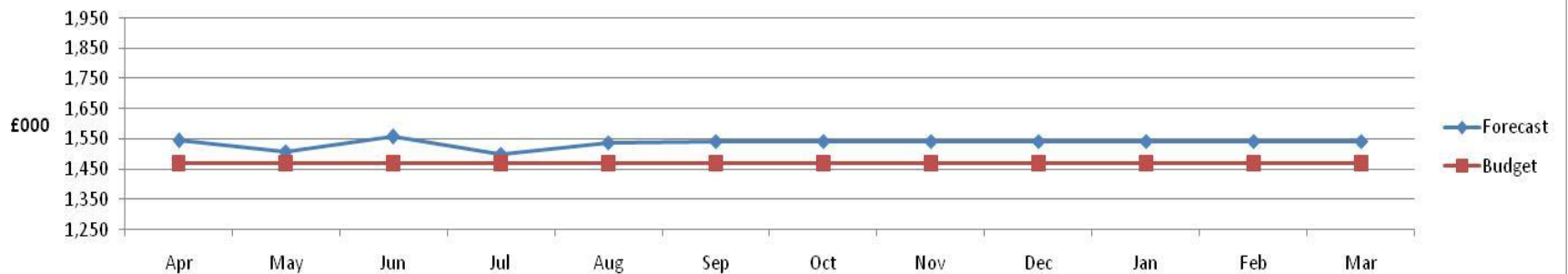
### Residential



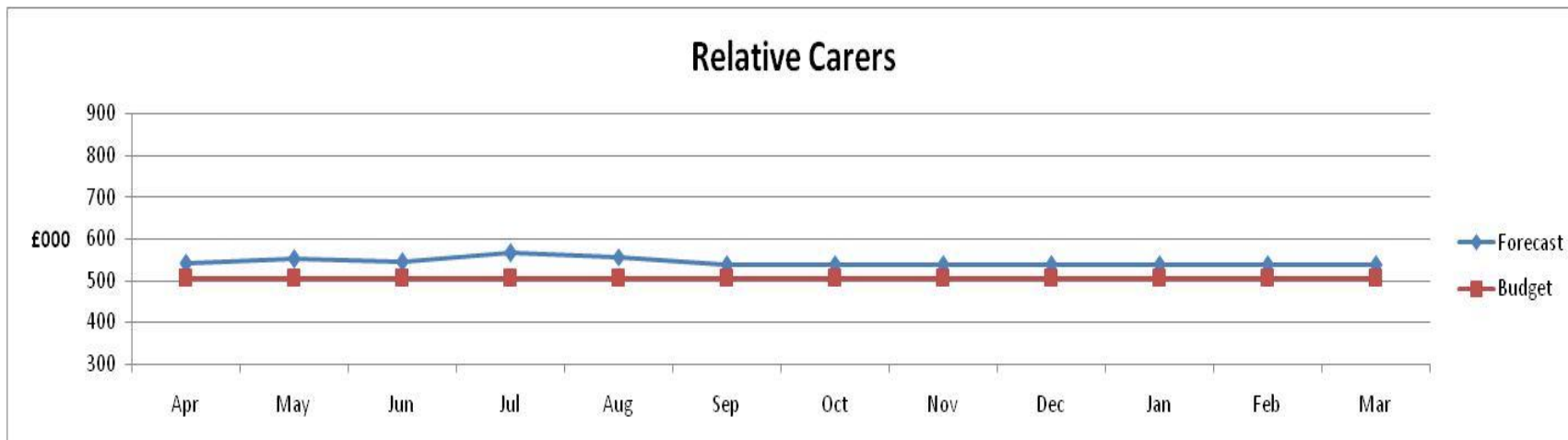
### External Fostering



### Internal Fostering



## Relative Carers



### Key examples of progress on delivery of action plan to reduce numbers of CIC and costs

#### Early Intervention

*Analysis of issues being referred to the Helpdesk and case audits by children's Service Delivery Managers shaping implementation of Family Connect and access to other Family and Cohesion services. Early indications of the impact of Family Connect is showing diversion of less complex cases away from the safeguarding service*

#### Commissioning and Procurement

*Regional residential placements Contracting Framework now in place (reduced costs of individual placements) Renegotiation of care costs of Jigsaw complete. Two Quality Monitoring Officers have now been added to the team to check that contract terms are being met. Creative packages of care being developed for individual YPs as alternatives to care at reduced cost*

#### Safeguarding and Corporate Parenting

*Workshops planned to develop new model of working for Child Protection conferences which focuses on the child's lived experience. Agreement within safeguarding of planned analysis of themes via permanence panel to speed up care planning to achieve some kind of permanent placement for children in care – including safe return home. Weekly challenge by AD regarding care plans for new CIC*

#### Improvements in Internal Provision

*Cabinet approved increased allowances for internal foster carers equivalent to competitors. New approach to responding to enquiries enables assessments to start sooner. Weekly stall in town centres is producing promising enquiries*

Performance Area	Target	July 2012	Rolling Year Data	Status and Comments	2011/2012	Good performance direction
% of LAC aged 10-16 in foster placement or placed for adoption	80%	77% (87/113)	N/A	The percentage of children placed in a foster placement or for adoption is slightly lower than at year end.	78% (89/114)	Higher = Better
The percentage of sessions missed due to overall absences for children who have been looked after for at least twelve months at 31 March	No Target Set	Not yet available	N/A	Information taken from adoption scorecard. Latest data available is March 2011, where T&W were ranked 17 <sup>th</sup> (Best performance ranked as number one)	3%	Lower = Better
Number of looked after children adopted during the year as a percentage of the number of children looked after 6 months plus as month end	12%	5.9% (15/255)	Number adopted 01/10/10 – 30/09/11 34 01/10/11 – 30/09/12 30	At the same point last year 17 children had been adopted between 01/04/2012 and 30/09/2012. (This includes 3 Special Guardianship Orders). As at 30/09/2012 14 children are placed for adoption.	12.8% (32/250)	Higher = Better
Adoptions within best interest timescales	100%	100% (12/12)	N/A	Please note that the 15 in the previous indicator (number of adoptions includes three special guardianship orders which is the criteria for that indicator)	96.1% (25/26)	Higher = Better
New foster care households approved in the year)	14 New households 18 new places	Net Mainstream Approvals -1 Households -1 Placements	N/A	Since 01/04/2012 there have been 4 mainstream, households (7 places) approved and 5 households de-registered (8 places). There are currently 15 Form F assessments being completed and a number of other promising enquiries. The number of deregistrations is unpredictable so we may not meet the target. A more rigorous approach is in place throughout the assessment process to ensure that the carers approved are able to meet the needs of children coming into our care. All the households that have been approved this year have taken placements.	Net Approvals 12 Households 11 Places	Higher = Better
% of children with 3 placements plus in the year (this includes repeat episodes of care)	8%	3.3% (10/303)	01/10/10 – 30/09/11 9% (26/290) 01/10/11 – 30/09/12 9.6% (29/303)	As at the end of September 2012, 10/303 (3.3%) children had three placements plus This is slightly higher than the same point last year when only 7/300 (2.3%) of children in care had had 3 placements plus.	8.3% (25/300)	Lower = Better
CIC for 2.5 years with same placement for 2 years	79%	81.4% (83/102)	N/A	As at the same point in the previous year (September 2011) 76% of children who had been looked after for 2.5 years were in placement for two years.	79.2% (84/106)	Higher = Better

## Ethnicity of Children In Care

	No of BME	Population	%
Children in Care from a BME background as at 30/09/2012	43	303	14.2%
Foster Carers from a BME background as at 30/09/2012	9 (7 households)	222	4.1%
% of BME children placed with Foster Carers from a BME background	5	43	11.6%
% of children in T&W from a BME Group taken from 2010 School Census	2721	21926	12.4%

At the end of September 2012, 43 children in care were from a Black or minority ethnic (BME) background.

9 children were placed with relative/friend carers, 24 children are placed with foster carers, of these 5 are placed with black or minority ethnic carers.

1 Child is placed for adoption, 1 is placed with parents and 9 are placed in homes and hostels.

14.2% of the CIC population are from a BME background and 4.1 % of fostering households are from a BME background.

## Disabled Children that are looked after, with placement breakdown

Type of Placement	Mar-10	Mar-11	Mar-12	Sep-12
LA Foster Carer	51.72%	53.57%	37.14%	43.6%
Agency Foster Carer	3.45%	7.14%	17.14%	12.8%
Homes & Hostels	31.03%	28.57%	37.14%	35.9%
Relative/Friend	13.79%	10.71%	8.57%	7.7%

As at the end of September 2012, there were 39 children with a disability who were looked after. 64.1% (25) were placed in foster care in total (including relative carers).

6 children are aged 1-4 Years, of those 1 had been in placement for less than a year (has had three placements since coming into care nearly two years ago). 2 have been in placement for 1 -3 years, and 3 have been in placement for 3 years plus. For this group overall, stability has been positive. These children are all currently placed in foster care.

5 were aged 5-9 years. All of these children are either placed in foster care or with a relative friend carer. The majority have had 2 placements since coming into care – 2 have been in placement for under 1 year, 2 in placement for 1-3 years and 1 has been in placement for 5 years plus.

There are 19 children who are aged between 10-15, of those 10 are placed in foster care. The remainder are in homes or hostels. Of the children placed in foster care, 9 out of 10 have been in placement for between 3 and 8 years. Of the 10-15 year olds placed in homes or hostels, 4 had been in placement for less than a year (have been in care for less than a year so therefore 3 out of 4 had only had one placement since coming into care), 5 have been in placement between 1 and 3 years.

There are 9 children aged 16+. Of those 4 are currently placed in foster care and have been for between 2 and 11 years. The remainder are placed in homes and hostels, and have been in placement for one year or more.