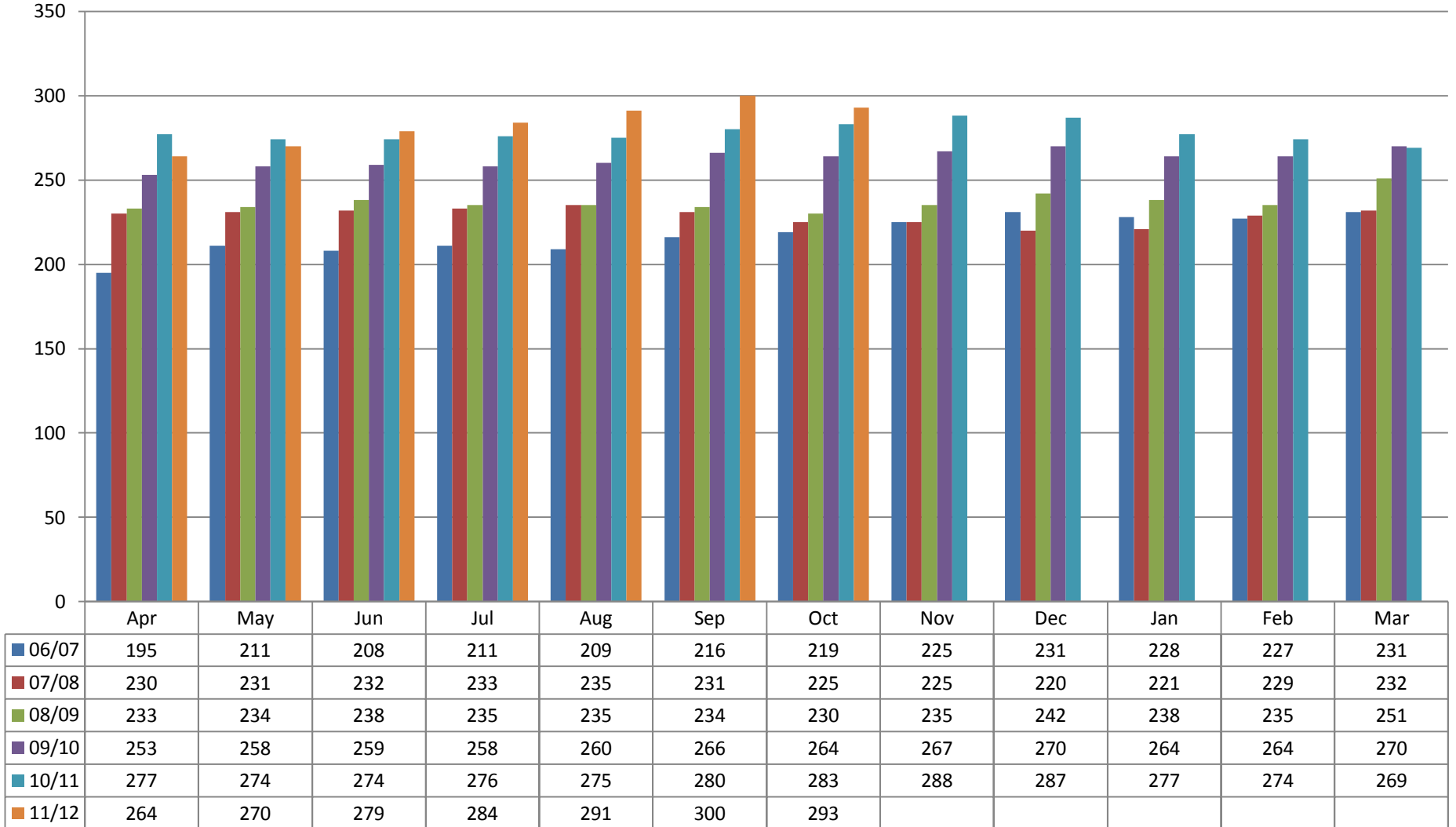


# Children In Care Trend Data 2007-31/10/2011

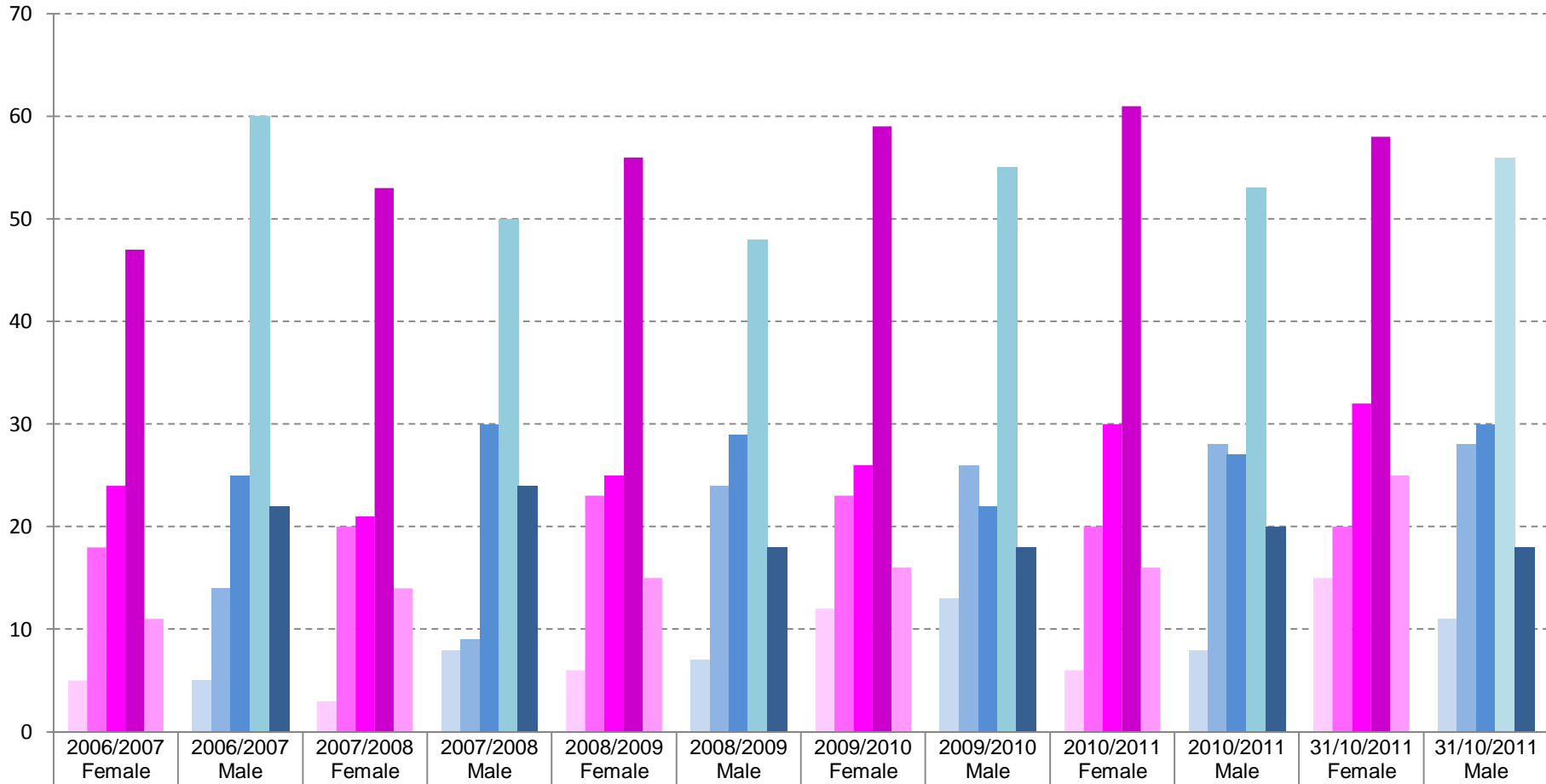
Information provided by Data Support Team  
Figures provided are as at 31/10/2011

## Number of Children In Care at Month End



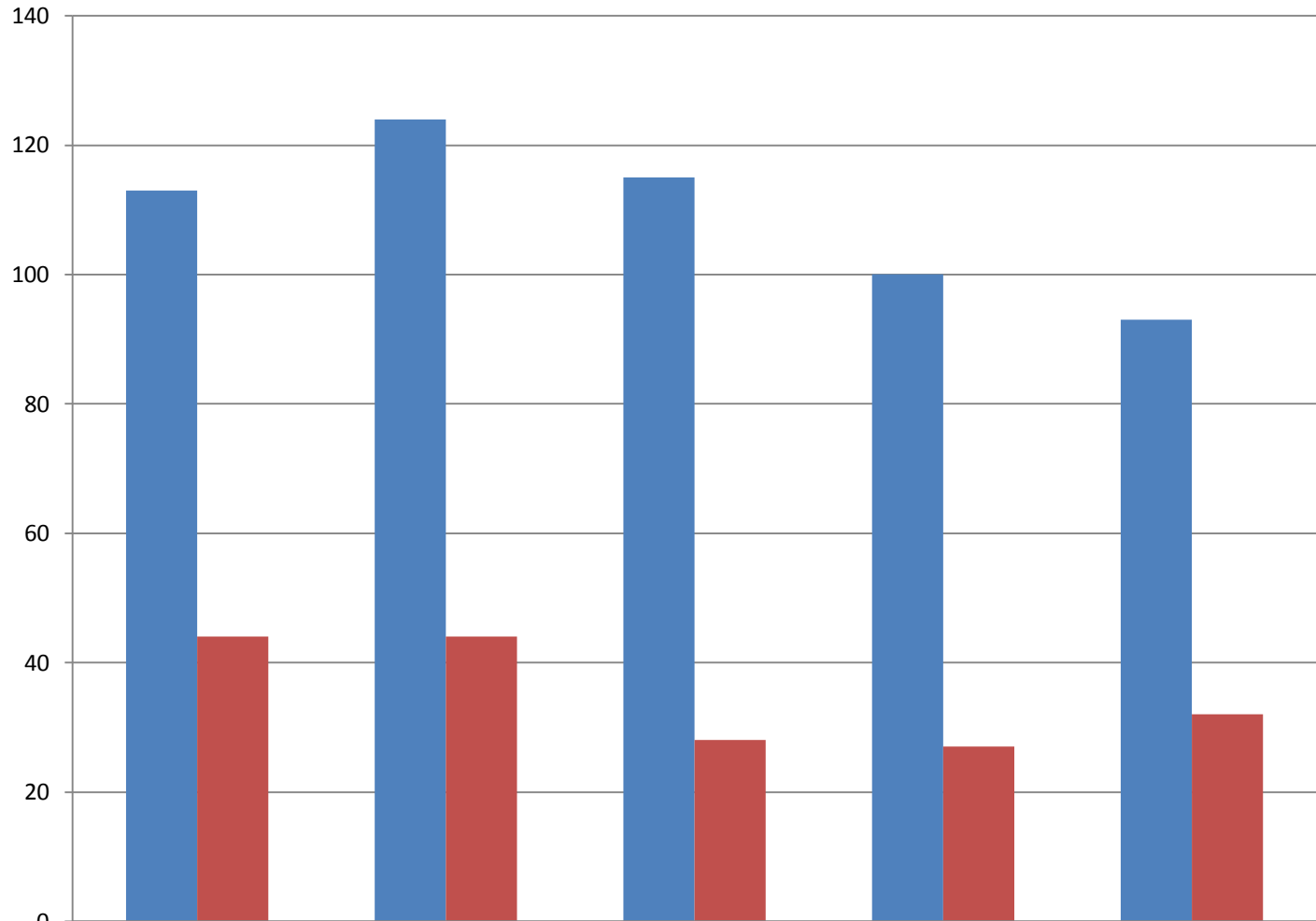
There has been a 33.8% increase in the number of Children In Care since October 2006 when there were 219 Children In Care compared to October 2011 when there were 293 children in care.

## Children In Care at Year End by Gender and Age Group Trend Data (Numbers)



2. Under 1	5	5	3	8	6	7	12	13	6	8	15	11
3. 1-4	18	14	20	9	23	24	23	26	20	28	20	28
4. 5-9	24	25	21	30	25	29	26	22	30	27	32	30
5. 10-15	47	60	53	50	56	48	59	55	61	53	58	56
6. 16+	11	22	14	24	15	18	16	18	16	20	25	18
<b>Total</b>	<b>105</b>	<b>126</b>	<b>111</b>	<b>121</b>	<b>125</b>	<b>126</b>	<b>136</b>	<b>134</b>	<b>133</b>	<b>136</b>	<b>150</b>	<b>143</b>

# The Number of Children who became Looked after and of those the number who ceased to be looked after during the year



■ New LAC in Year	113	124	115	100	93
■ New LAC who ceased to be LAC within the year	44	44	28	27	32

Percentage of new LAC who ceased to be LAC within the year

39%

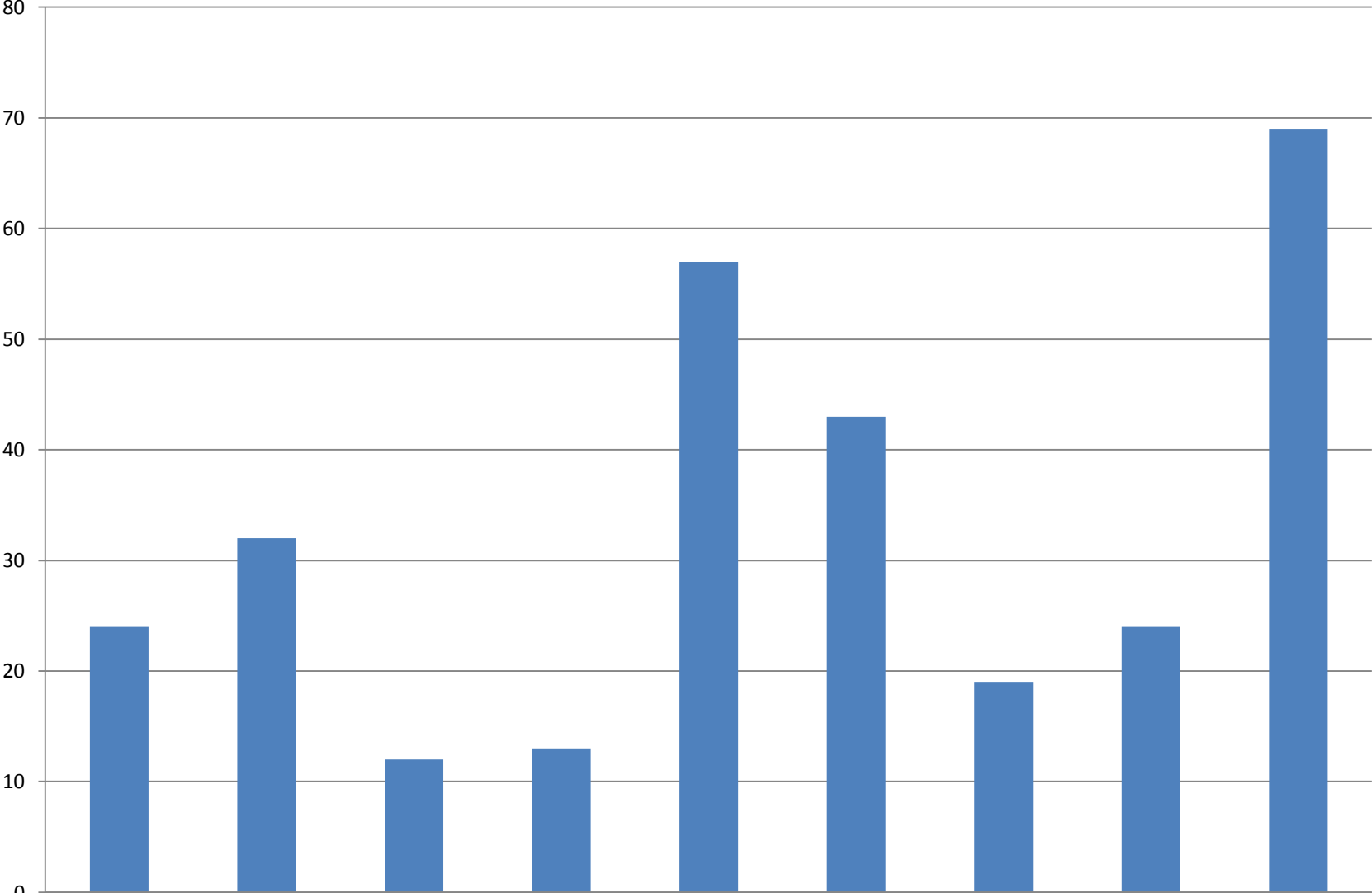
35.5%

24.3%

27%

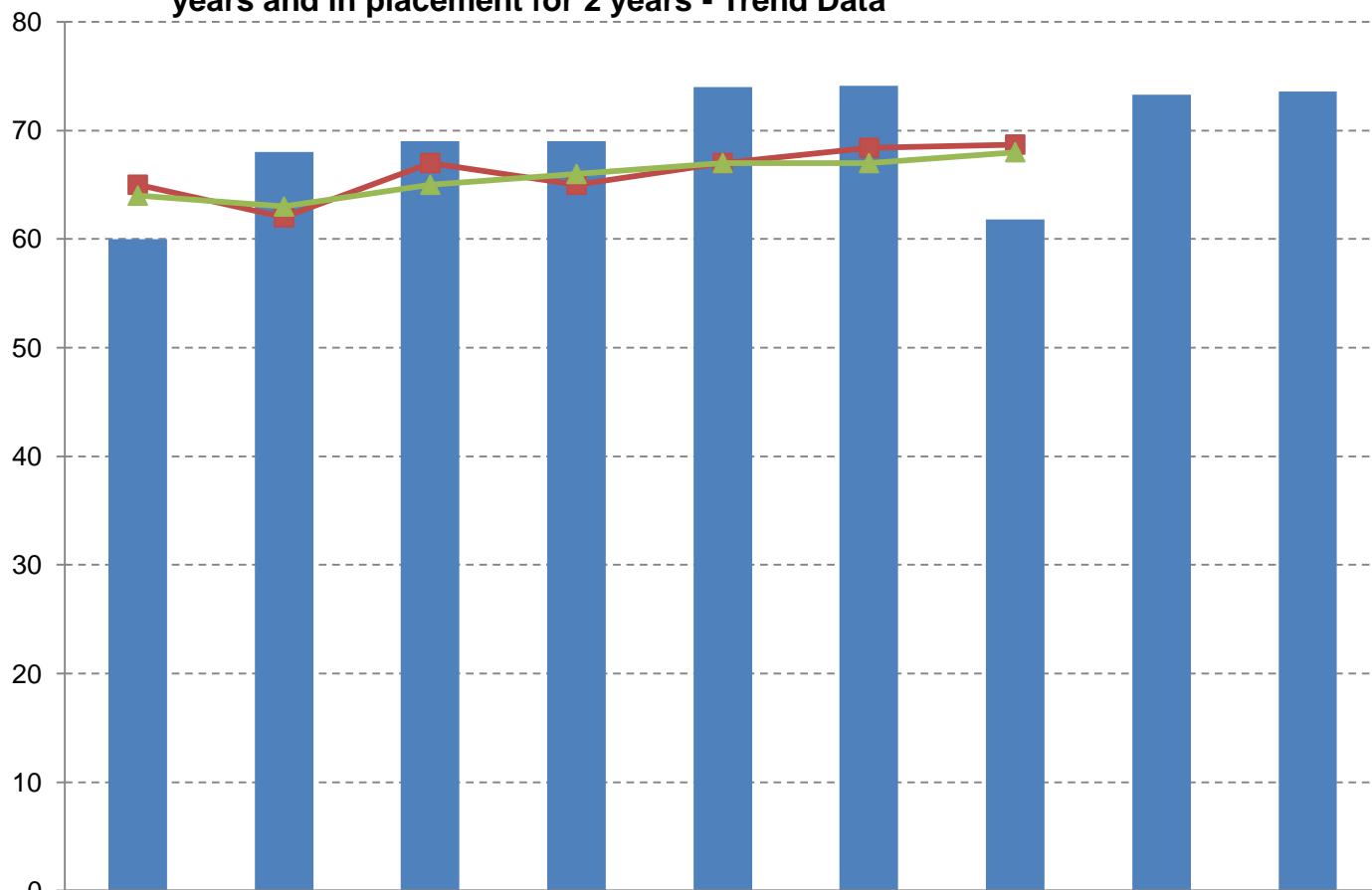
34.4%

# Children In Care as at 31/10/2011 by the length of time they have been in Care



	0-3 Months	3-6 Months	6-9 Months	9-12 Months	1-2 Years	2-3 Years	3-4 Years	4-5 Years	5 Years +
Number of Children	24	32	12	13	57	43	19	24	69

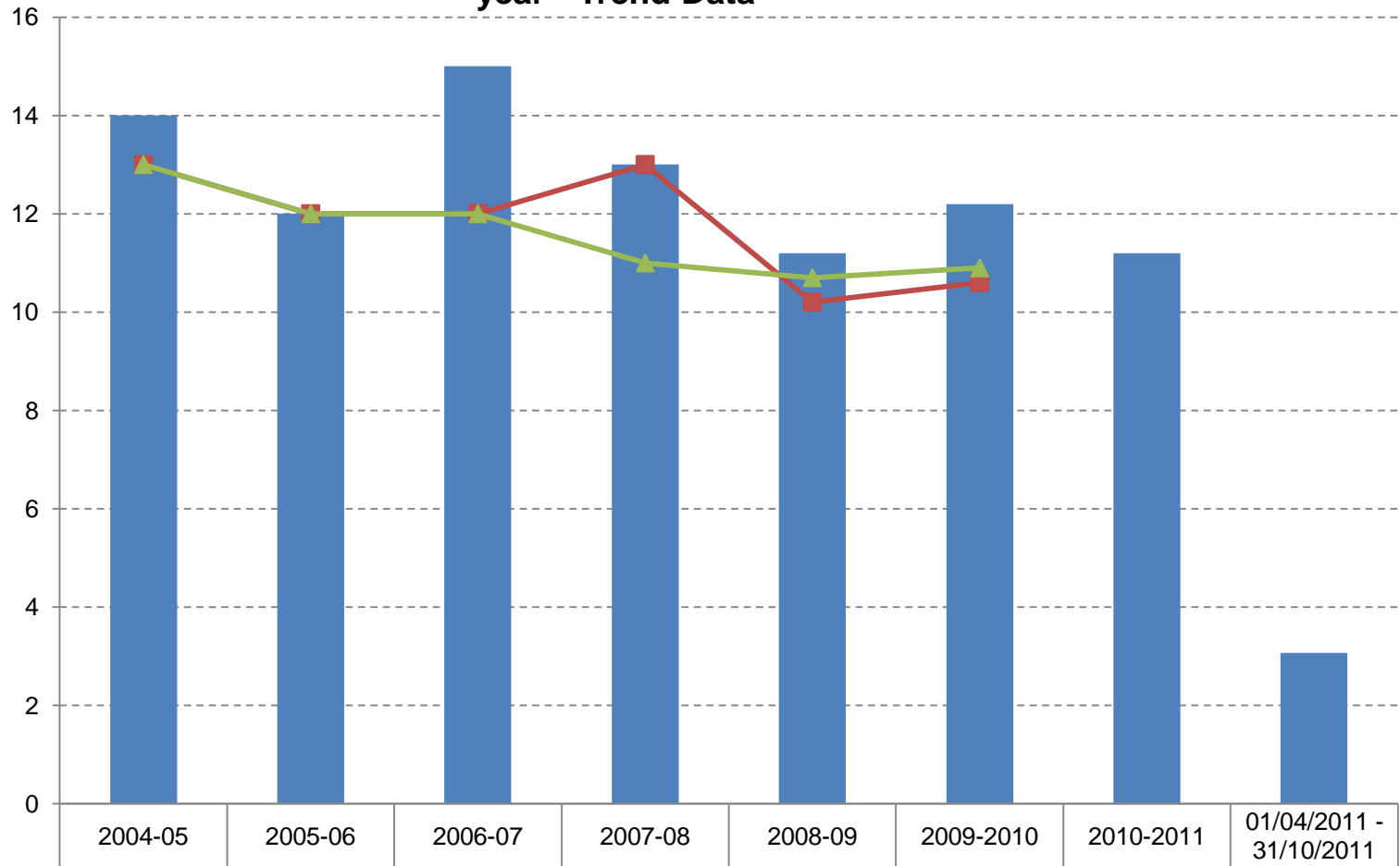
**Placement Stability: The % of Children in Care aged under 16, who have been looked after for 2½ years and in placement for 2 years - Trend Data**



	2003-04	2004-05	2005-06	2006-07	2007-08	2008-09	2009-10	2010-11	01/04/2011 - 31/10/2011
<b>Telford and Wrekin</b>	60	68	69	69	74	74.1	61.8	73.3	73.6
<b>Statistical Neighbour Average</b>	65	62	67	65	67	68.4	68.7		
<b>England Average</b>	64	63	65	66	67	67	68		

The higher the percentage the better

## Placement Stability: % of Children In Care who have had 3 placements plus within the year - Trend Data



Telford and Wrekin	14	12	15	13	11.2	12.2	11.2	3.06
Statistical Neighbour Average	13	12	12	13	10.2	10.6		
England Average	13	12	12	11	10.7	10.9		

The lower the percentage the better