

# CYP Scrutiny Meeting

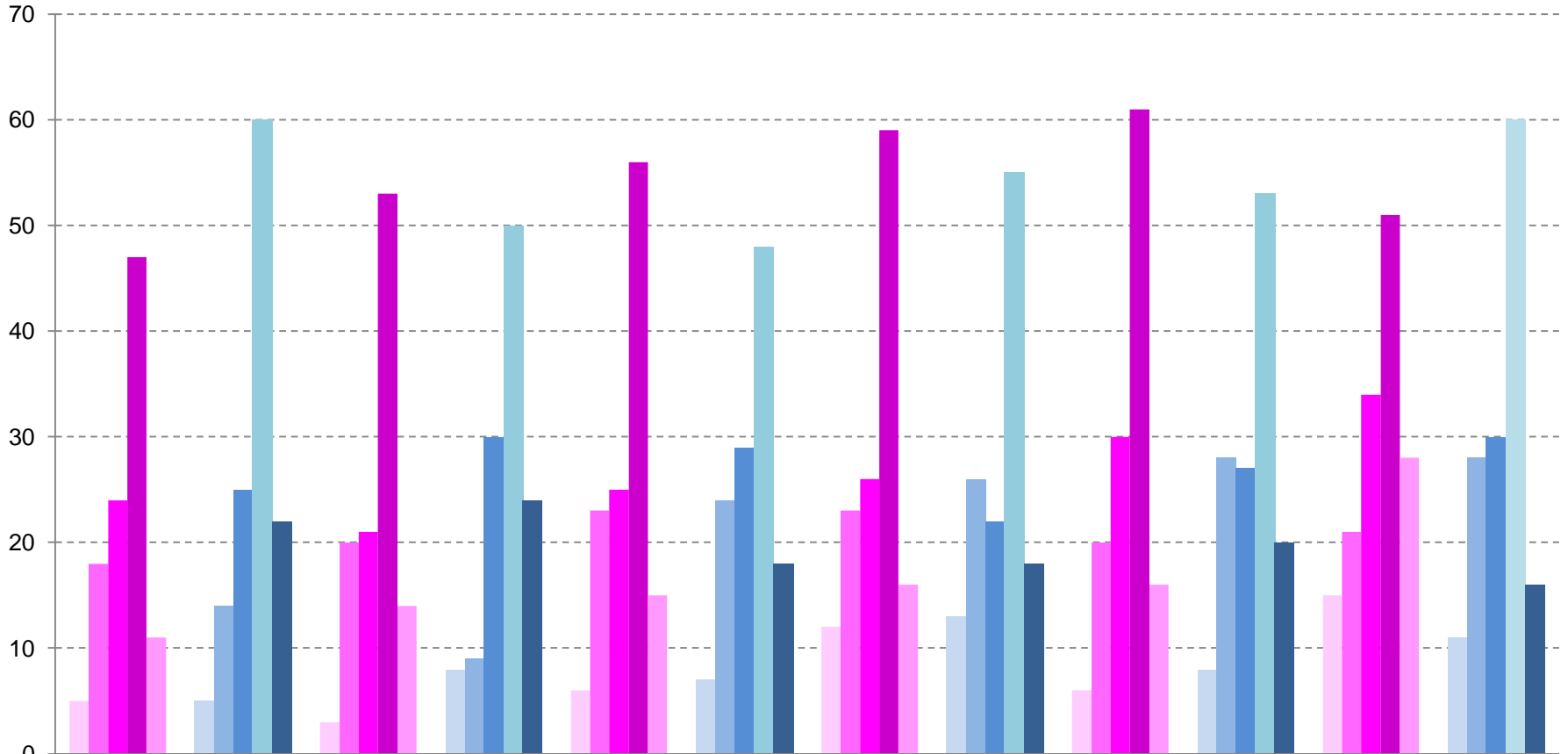
All figures as at 31 January 2012

Information supplied by Data Support Team

## Number of Children in Care at month end

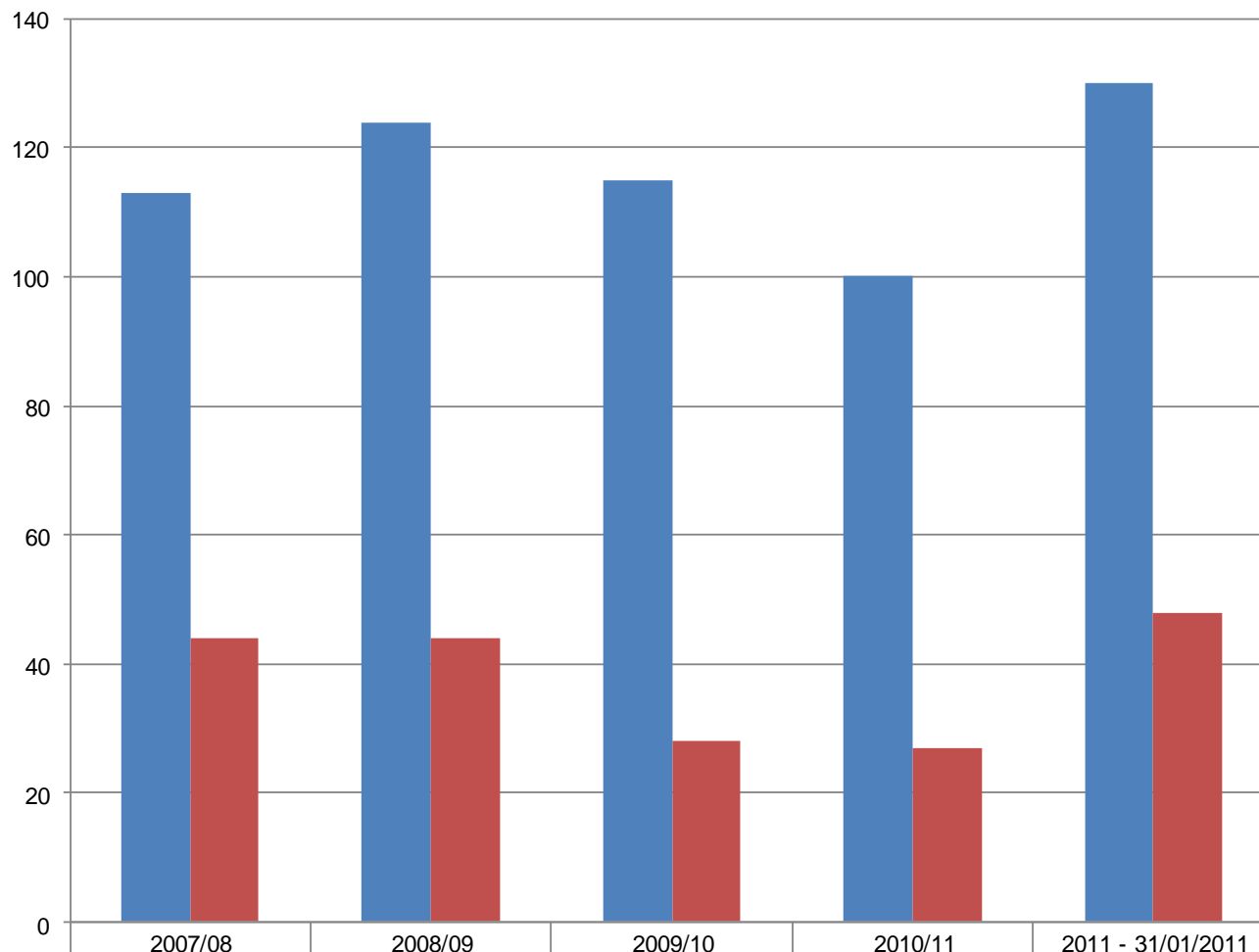


## Children In Care at Year End by Gender and Age Group Trend Data (Numbers)



	2006/2007 Female	2006/2007 Male	2007/2008 Female	2007/2008 Male	2008/2009 Female	2008/2009 Male	2009/2010 Female	2009/2010 Male	2010/2011 Female	2010/2011 Male	31/01/2012 Female	31/01/2012 Male
2. Under 1	5	5	3	8	6	7	12	13	6	8	15	11
3. 1-4	18	14	20	9	23	24	23	26	20	28	21	28
4. 5-9	24	25	21	30	25	29	26	22	30	27	34	30
5. 10-15	47	60	53	50	56	48	59	55	61	53	51	60
6. 16+	11	22	14	24	15	18	16	18	16	20	28	16

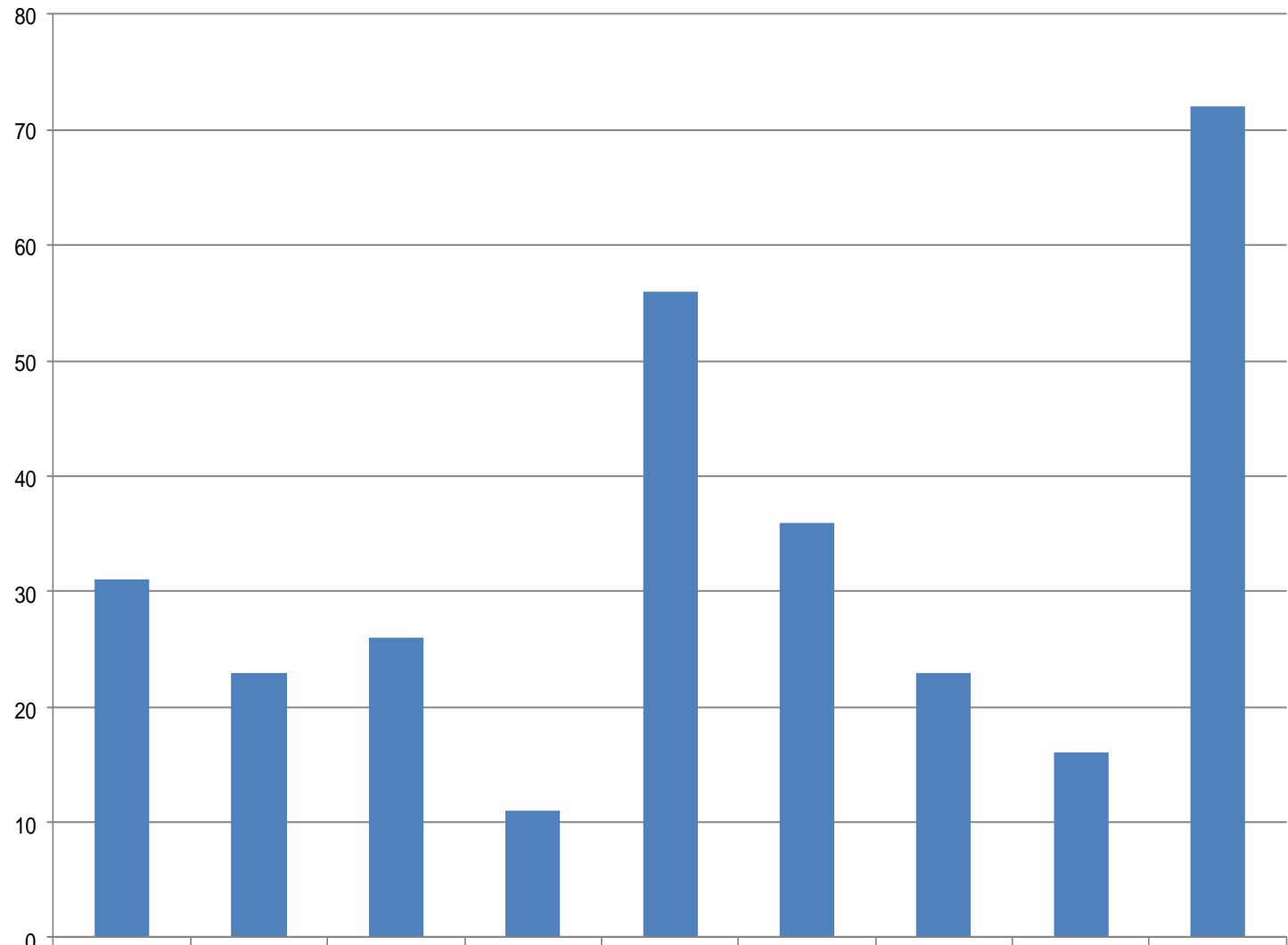
### The Number of Children who became Looked after and of those the number who ceased to be looked after during the year



■ New LAC In Year	113	124	115	100	130
■ New LAC who went home during the year	44	44	28	27	48

Percentage of new LAC who ceased to be LAC within the year	<b>39%</b>	<b>35.5%</b>	<b>24.3%</b>	<b>27%</b>	<b>37%</b>
--	------------	--------------	--------------	------------	------------

### Children In Care as at 31/01/2012 by the length of time they have been in Care



Number of Children

31

23

26

11

56

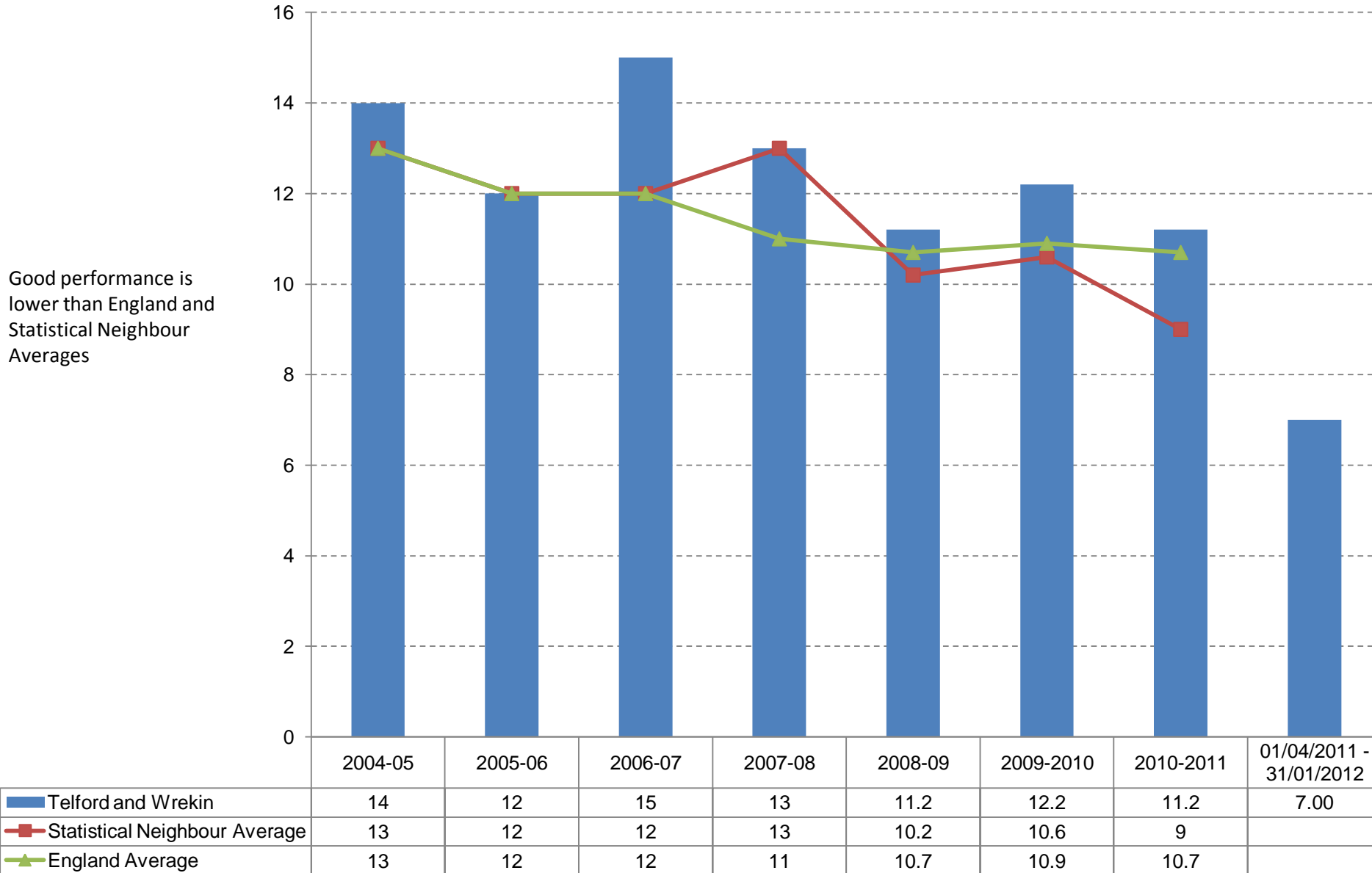
36

23

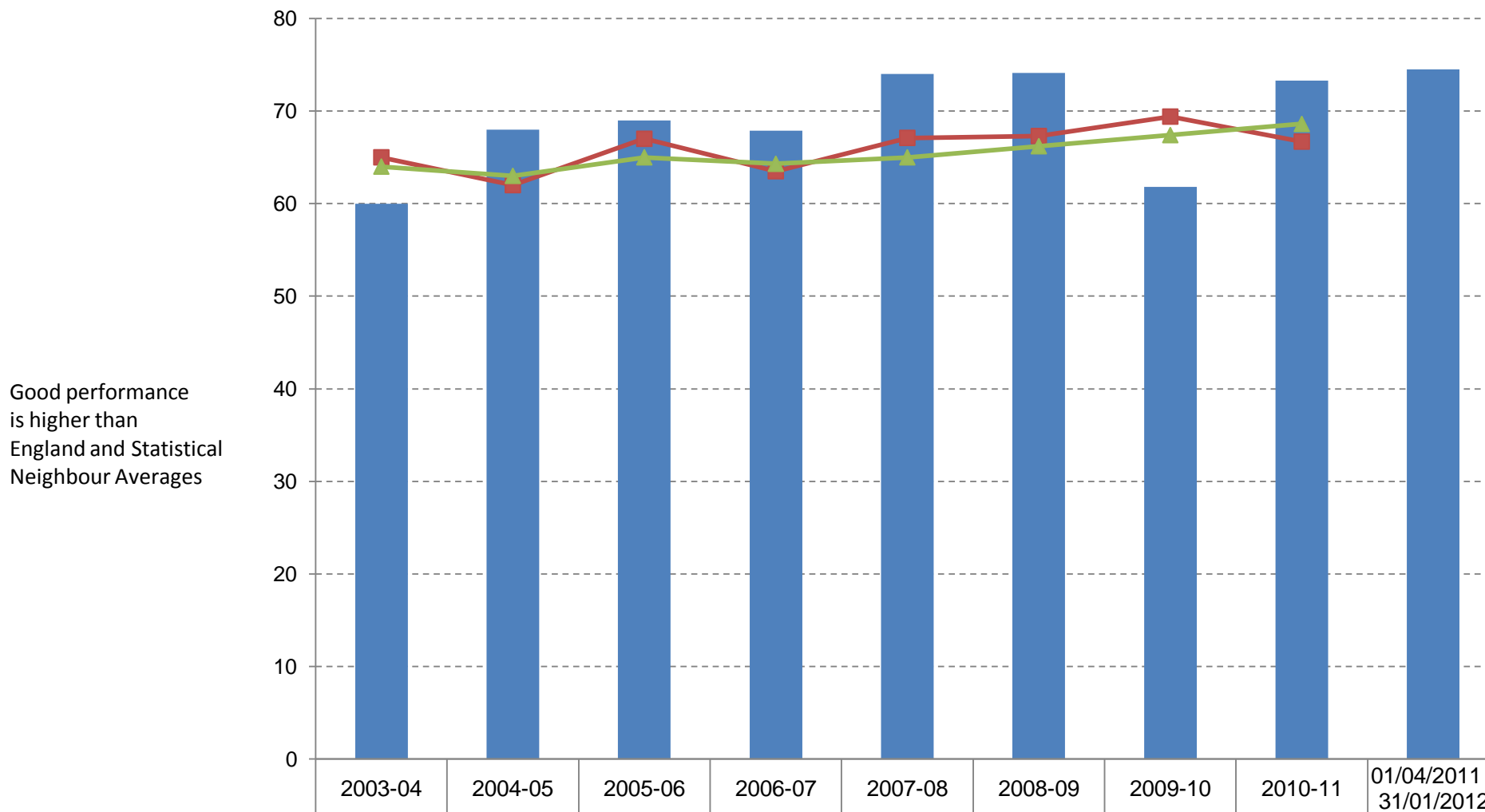
16

72

### Children In Care looked after on 31 March who had 3 Placements Plus within the year - Trend Data



## Children in Care aged under 16, who have been looked after for 2½ years and in placement for 2 years - Trend Data



■ Telford and Wrekin	60	68	69	67.9	74	74.1	61.8	73.3	74.5
■ Statistical Neighbour Average	65	62	67	63.5	67.1	67.3	69.4	66.7	
▲ England Average	64	63	65	64.3	65	66.2	67.4	68.6	