

## TELFORD & WREKIN COUNCIL

HEALTH AND WELLBEING BOARD – 13 MARCH 2013

PUBLIC HEALTH TRANSITION PROGRESS UPDATE

REPORT OF THE DIRECTOR OF ADULT AND COMMUNITY SERVICES AND  
DIRECTOR OF PUBLIC HEALTH

### 1.0 SUMMARY

1.1 This report summarises the arrangements that are in place to ensure a successful transition to the new public health responsibilities the Council has as result of the Health and Social Care Act 2012

### 2.0 RECOMMENDATIONS

2.1 The Board notes the new public health responsibilities placed on the Council from 1 April 2013, the transition planning and activity that has taken place and the final arrangements now made through delegated authority to ensure the Council meets these responsibilities

2.2 The Board welcomes the opportunities that the new Health and Wellbeing and Public Health arrangements bring for the area

### 3. INFORMATION

3.1 Whilst the transition process has been difficult and not helped by the delays in publishing regulations and guidance, locally we will be prepared to move forward with the new agenda from the 1 April, as set below.

3.2 **Council Senior Management Team:** As part of a review of senior management arrangements in the Council, the Council's Managing Director confirmed on 27 February the designation of a new post in the Council's Senior Management Team of Assistant Director: Health & Well-Being. This post will pick up the new Health & Wellbeing and Public Health responsibilities transferring to the Council from the NHS and will carry the statutory officer status of 'Director of Public Health'(DPH). This post will report directly to the Director of Care, Health and Wellbeing but with a direct link to the Managing Director as necessary in fulfilling the statutory DPH role, as is the case with other statutory officers in the Council. Dr Catherine Woodward will transfer across from the PCT into this role. A copy of the revised Council senior management structure is appended.

### 3.3 Public Health England (PHE) is now well established to

- Support transparency and accountability across the system
- Provide professional support and leadership to the public health system
- Ensure consistent high quality services are provided by Public Health England units
- Ensure the delivery of the national Emergency Planning, Resilience and Response strategy

3.4 Duncan Selbie was appointed **Chief Executive of PHE** and took up post July 2012. The PHE 'delivery chain' includes PHE regions and PHE centres. The PHE regions are aligned with National Commissioning Board Regions .Within the Midlands and East region which is led by Dr Rashmi Shukler,we are part of the West Midlands PHE Centre, led by Dr Sue Ibbotson which will provide local presence, leadership and delivery of some PH services including:

- Provision of Health Protection Services (previously offered by Health Protection Agency)
- Building PHE's relationships with local authorities and providing professional support to them
- Ensuring the local NHS has access to high quality PH advice
- Employment and professional development of Immunisation and Screening teams located with NCB Local Area Teams
- Development of the specialist and wider public health workforce
- Provision of PH specialists to support specialised commissioning and dental commissioning
- Oversee delivery of Drug and Alcohol services (previous National Treatment Agency role)

3.5 **Local Public Health services** – Previous reports have set out the Public Health (PH) responsibilities transferring to the Council and amongst other things the concerns about the late publication of Regulations, Guidance, the PCT's Public Health budget and spend and the amount of Public Health Grant, Councils would receive. However despite this a Transition Board with the support of officers from the PCT (in particular the Public Health staff) and the Council have been working to ensure a smooth transition is achieved when the Council assumes its new responsibilities on the 1 April 2013.

3.6 **Public Health Grant** :We now know and welcome that the ring-fenced Public Health grant has been set at £10.6m for 2013/14, rising to £10.9m for 2014/15 which has enabled the Council to set the Public Health budget as part of its overall budget strategy.

3.7 **Public Health Contracts**: As previously reported the majority of current spend by the PCT is on services commissioned from providers, in particular Shropshire Community Trust and all contractual periods end 31st March 2013. With the budget position finalised we have now agreed which existing contracted services will still be required and gained agreement from Graham Urwin, NCB

Director for the PCT to extend these contracts for periods of up to 12 months maximum which allows them to novate to the Council. Contact has been made with each provider to explain the position. Our Commissioners (including transferring PCT commissioners) will now put together an action plan for the next few months to review all these contracts against the Council's new, emerging vision for Public Health services & value for money approach and enter into detailed discussion with providers. The Council has also been party to and approved decisions to let two new contracts in respect of Sexual Health services and Smoking Cessation.

**3.8 Staff Transfer:** National regulations in respect of staff transfer have been followed and we are in agreement with T&W PCT about the list of transferring staff. Council HR staff have had regular meetings with the transferring staff and we are not aware of any significant problems. They will transfer on their NHS terms and conditions, retain access to the NHS pension scheme and be subject to a range of protections currently being negotiated nationally for 24 months.

3.9 Most transferring staff will transfer as currently located within the current Public Health unit and continue to be based at the Halesfield base of the CCG, line managed by the Assistant Director: Health & Well-Being. Two posts with responsibility for Sexual Health Services commissioning and Drugs and Alcohol Services commissioning will be located with the existing Council Children's and Adult Social Care commissioners respectively at Darby House. Over the next few months we will then review current structures transferred across, to ensure they best support delivery of both Public Health and Health & Wellbeing responsibilities within the Council setting.

**3.10 Transfer Scheme:** A range of delegated authorities have already been given to deal with the Public Health Transfer (Cabinet Report – 20 September 2012). Transfer Schemes/lists being put together by T&W PCT in respect of all their current responsibilities, contracts, assets, liabilities, staff, etc transferring to the CCG, NCB, CSU and Council will be approved nationally within the NHS on the 28 March. Through delegated authority the relevant Council officers in consultation with the Chair of Health & Wellbeing Board will need to approve agreement to receive the transfers later this month.

#### **4.0 MINUTES OF PREVIOUS MEETINGS**

4.1 Cabinet Report – 22.12.2011 – NHS Transformation and Implications for the Council.

4.2 Cabinet Report – 29.3.2012 - NHS Transformation Update.

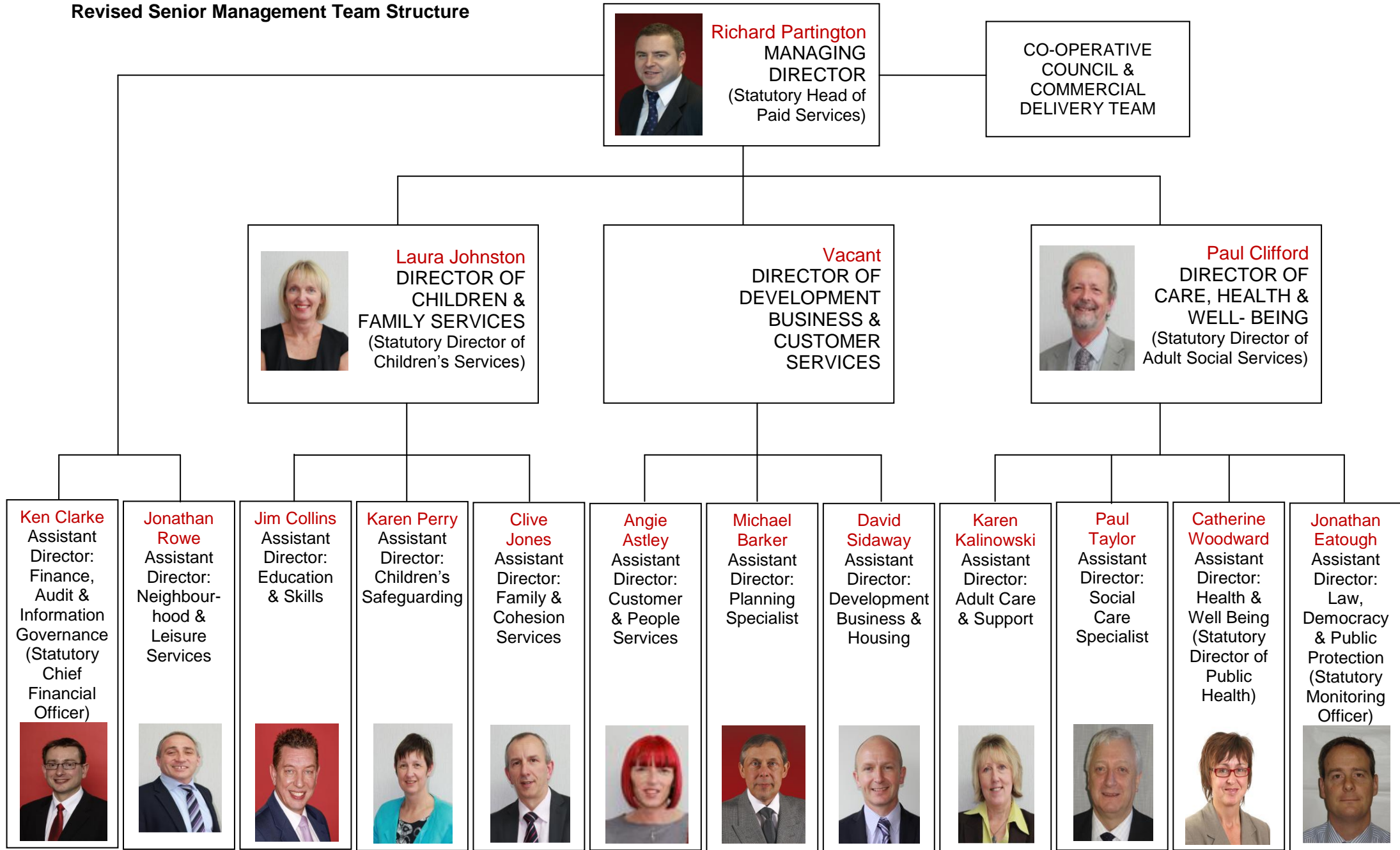

4.3 Cabinet Report – 20.9.2012 – Public Health Transition arrangements

#### **5.0 Background Papers**

5.1 The Health and Social Care Act 2012

Report prepared by: Paul Taylor, Assistant Director – Social Care Specialist  
[Paul.taylor@telford.gov.uk](mailto:Paul.taylor@telford.gov.uk) 01952 381200

# Revised Senior Management Team Structure

**Richard Partington**  
MANAGING DIRECTOR  
(Statutory Head of Paid Services)

CO-OPERATIVE COUNCIL & COMMERCIAL DELIVERY TEAM




**Laura Johnston**  
DIRECTOR OF CHILDREN & FAMILY SERVICES  
(Statutory Director of Children's Services)

**Vacant**  
DIRECTOR OF DEVELOPMENT BUSINESS & CUSTOMER SERVICES




**Paul Clifford**  
DIRECTOR OF CARE, HEALTH & WELL-BEING  
(Statutory Director of Adult Social Services)


**Ken Clarke**  
Assistant Director: Finance, Audit & Information Governance  
(Statutory Chief Financial Officer)



**Jonathan Rowe**  
Assistant Director: Neighbourhood & Leisure Services




**Jim Collins**  
Assistant Director: Education & Skills



**Karen Perry**  
Assistant Director: Children's Safeguarding



**Clive Jones**  
Assistant Director: Family & Cohesion Services




**Angie Astley**  
Assistant Director: Customer & People Services




**Michael Barker**  
Assistant Director: Planning Specialist



**David Sidaway**  
Assistant Director: Development Business & Housing




**Karen Kalinowski**  
Assistant Director: Adult Care & Support



**Paul Taylor**  
Assistant Director: Social Care Specialist



**Catherine Woodward**  
Assistant Director: Health & Well Being  
(Statutory Director of Public Health)



**Jonathan Eatough**  
Assistant Director: Law, Democracy & Public Protection  
(Statutory Monitoring Officer)

