

Placement Information 2003-2012

As at 31st March	2003/4	2004/5	2005/6	2006/7	2007/8	2008/9	2009/10	2010/11	2011/12	2012/13
Number of Looked after Children	195	190	200	230	230	251	270	269	300	320

Children in Residential Placements	42	45
Children in External Fostering	90	94
Children in Internal Fostering	101	114

NOTES:

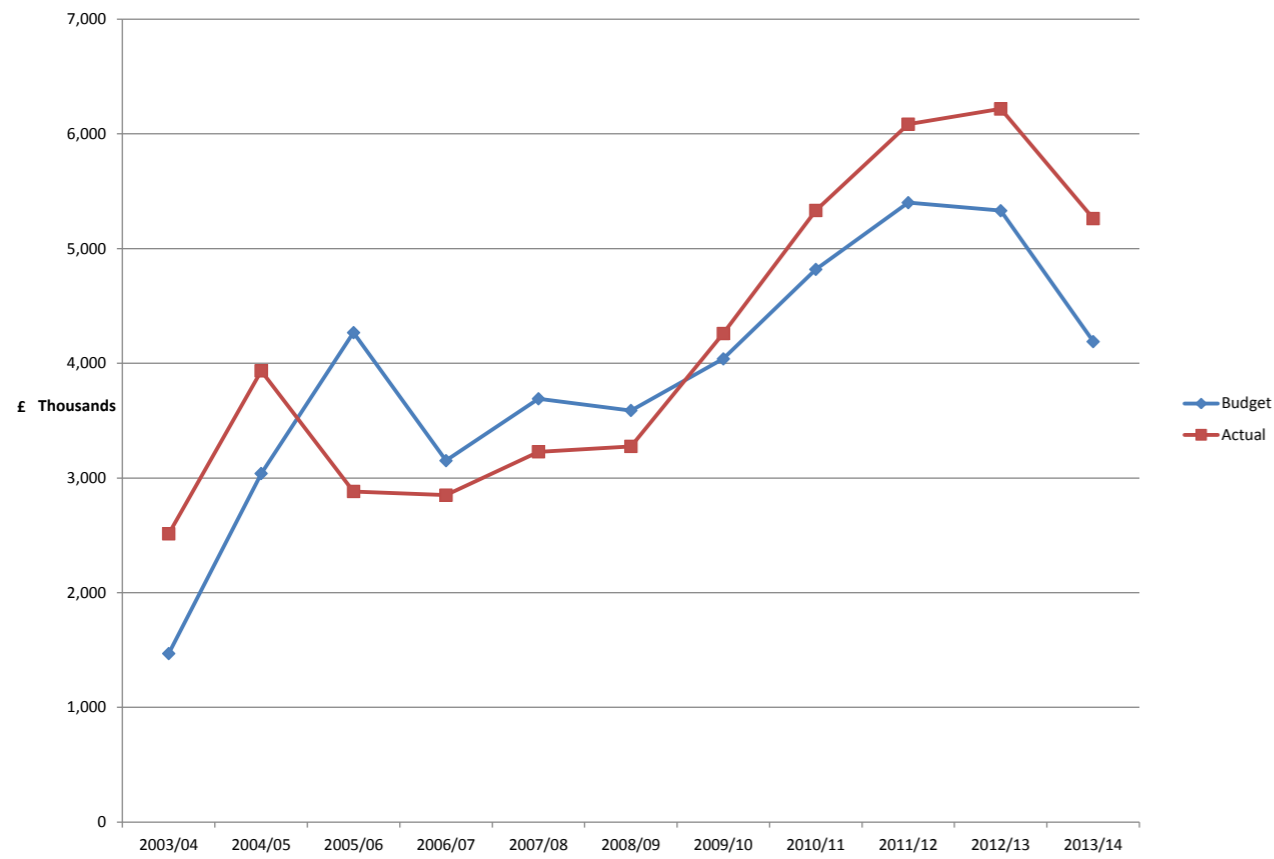
Financial figures include central overhead charges. Dashboard reports do not include these overheads.

2005/6 - 2007/8 Increase in numbers of CIC - improved early assessment arrangements which identified increased complexity of need

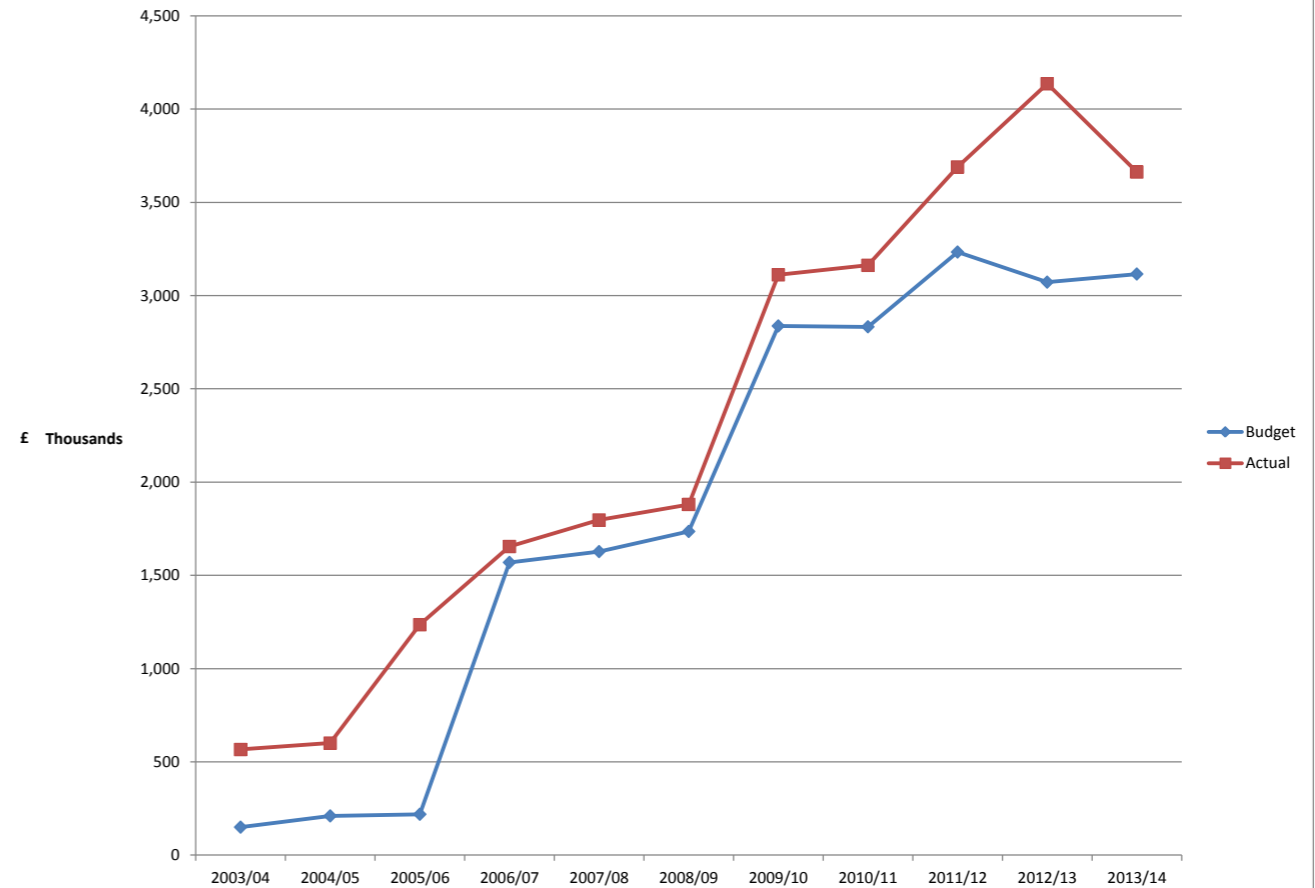
2008/9- 2009/10 Increase in numbers due to impact of Baby P

2010/11- 2012/13 Increase in numbers - children staying in care longer due to higher complexity of need including some large sibling groups

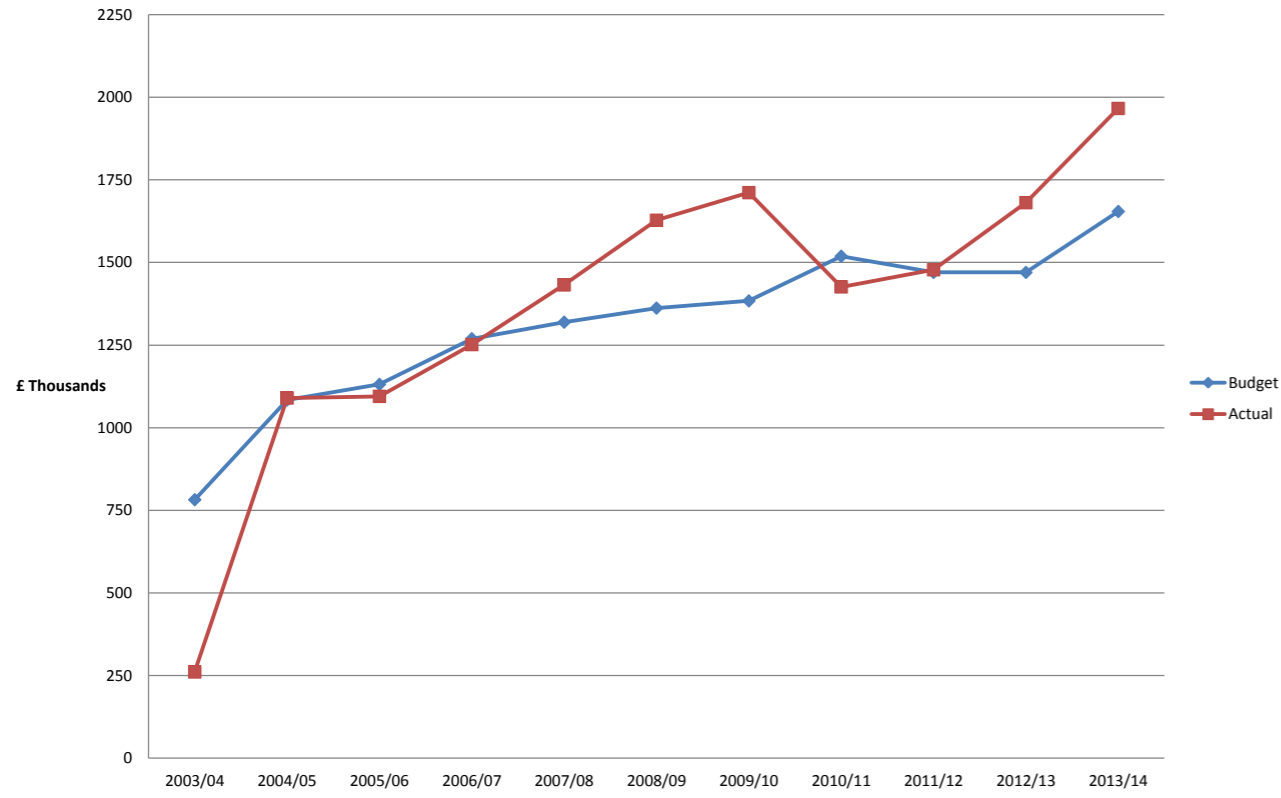
External Residential as at September 2013



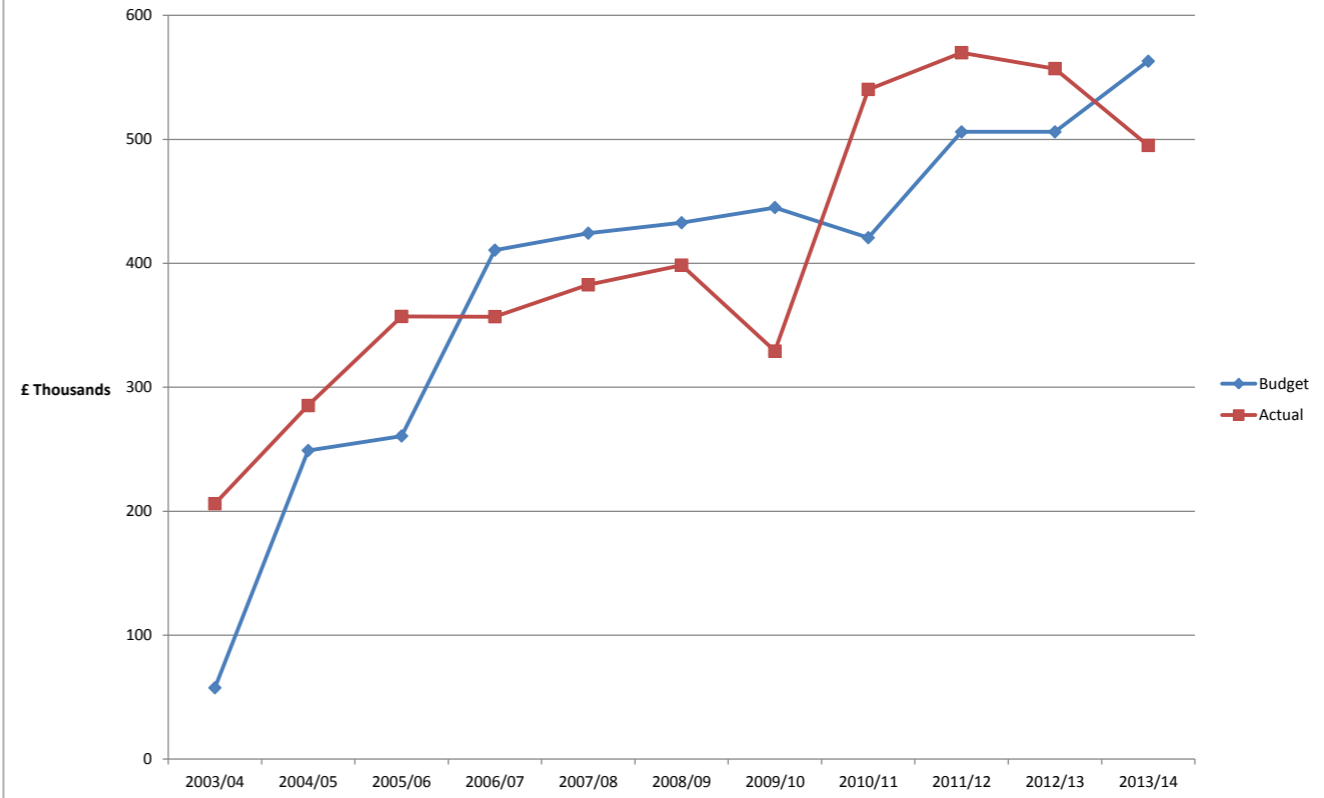
External Fostering as at September 2013



Internal Fostering as at September 2013



Relative Carers as at September 2013



Total Placements as at September 2013

