



Telford & Wrekin

Safeguarding
Children
Board

Together stopping this...



Telford & Wrekin Local Safeguarding Children Board

brings agencies together
to develop, plan and support
the welfare of children.

To do this we:

- Develop policies and procedures
- Support planning
- Arrange training
- Look at ways to improve

Our priorities for 2010 – 2011 are to:

- Help children not to feel **vulnerable** or **scared**
- Make sure children get the **right help** at the **right time**
- Get better at supporting children at risk of **sexual exploitation**, **domestic abuse** or from **going missing**
- Increase awareness of **internet** and **new technology safety** for all
- Think family – reduce the influence of **mental health**, **drug** and **alcohol problems**



Want to know more www.telfordsafeguardingboard.org.uk

Definition of Safeguarding

Based on Working Together To Safeguard Children adopted by T&W SCB

- Best possible chance in life
- Protected from harm or ill treatment
- Ensuring health or development is not damaged
- Grow up safely
- Cared for



Children Act 2004

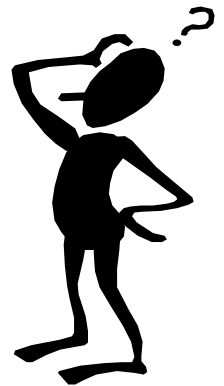
Key legislation

- Requires children's services authorities to establish Local Safeguarding Children Boards (S13)
- Duty to co-operate 'with a view to improving the well-being of children in (their) area.'(S10)

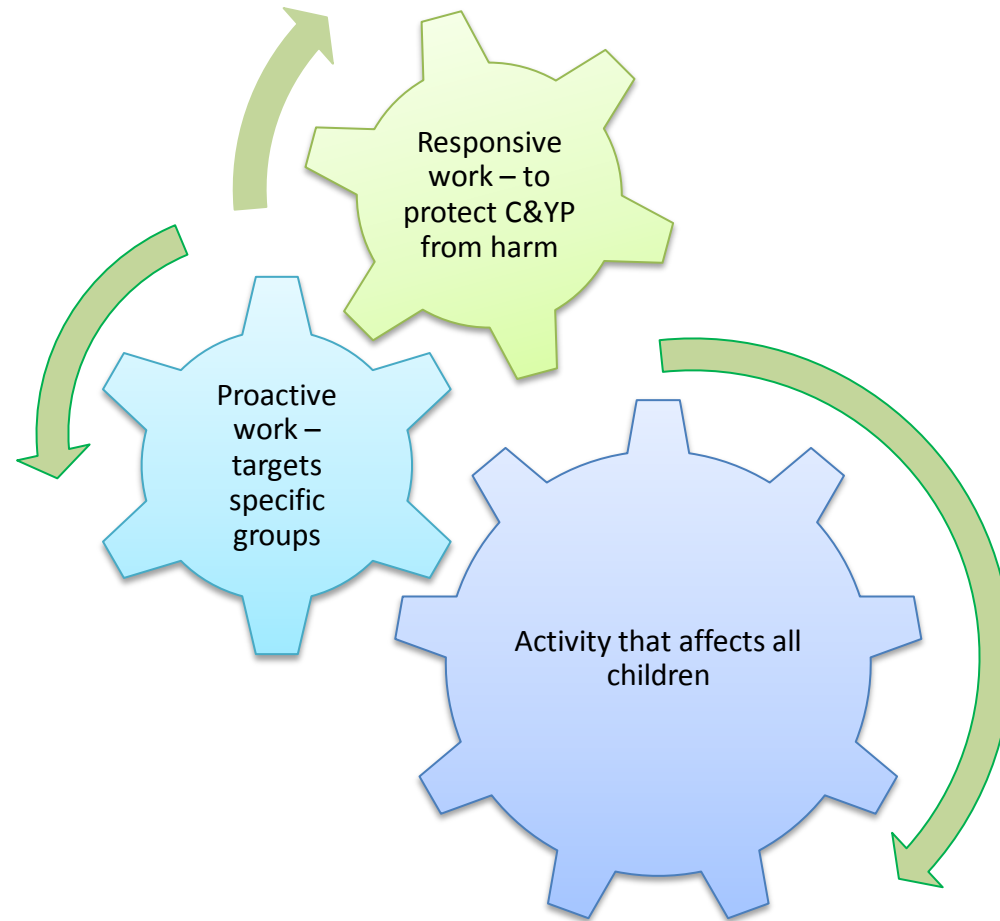


What does the Safeguarding Children Board (SCB) do?

- **Safeguard and promote the welfare of children in Telford & Wrekin by:**
 - Co-ordinating what is done by each person or organisation represented on the Board
 - Making sure that what is done is effective



Scope of the Board

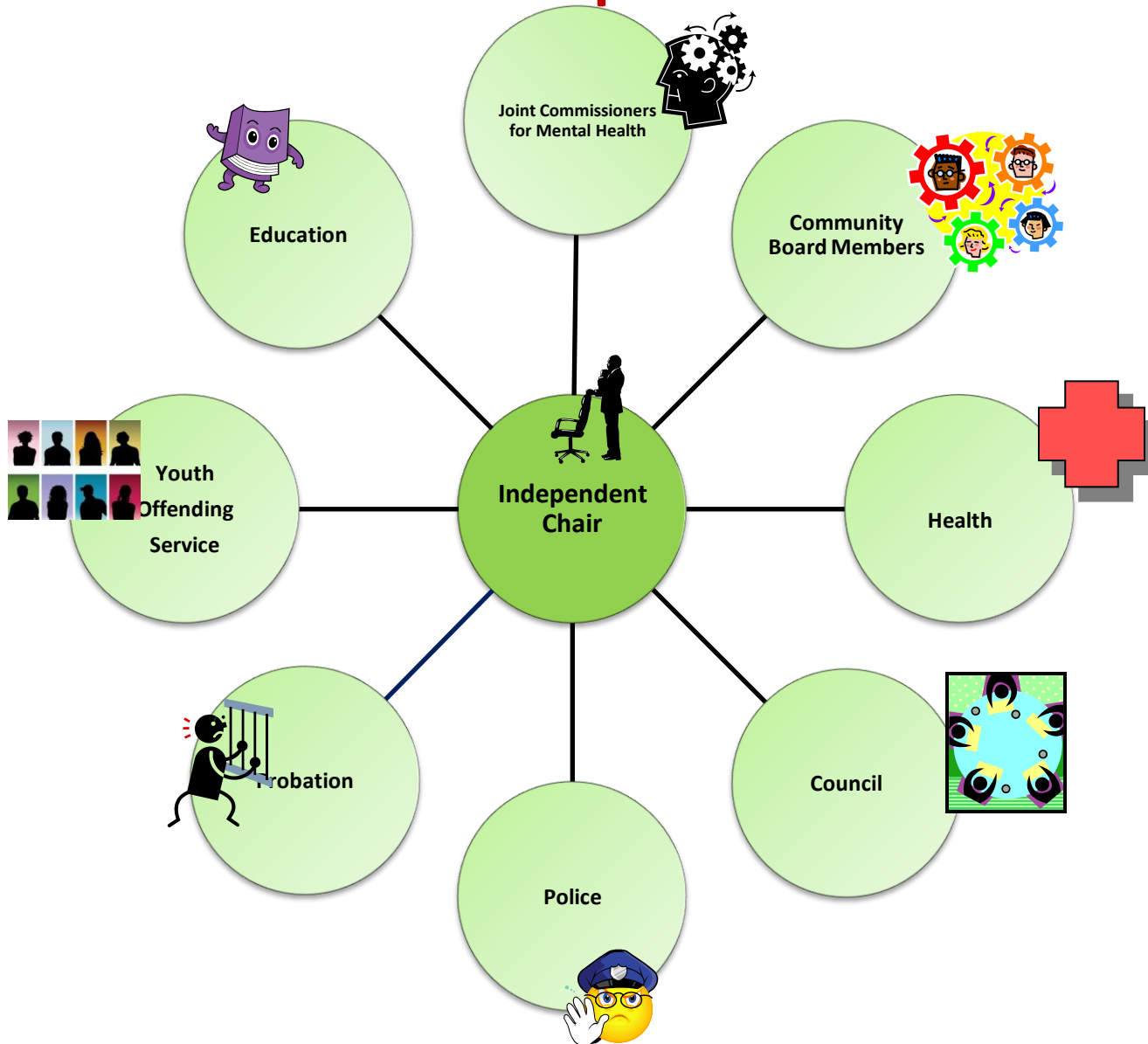


Functions of the Board

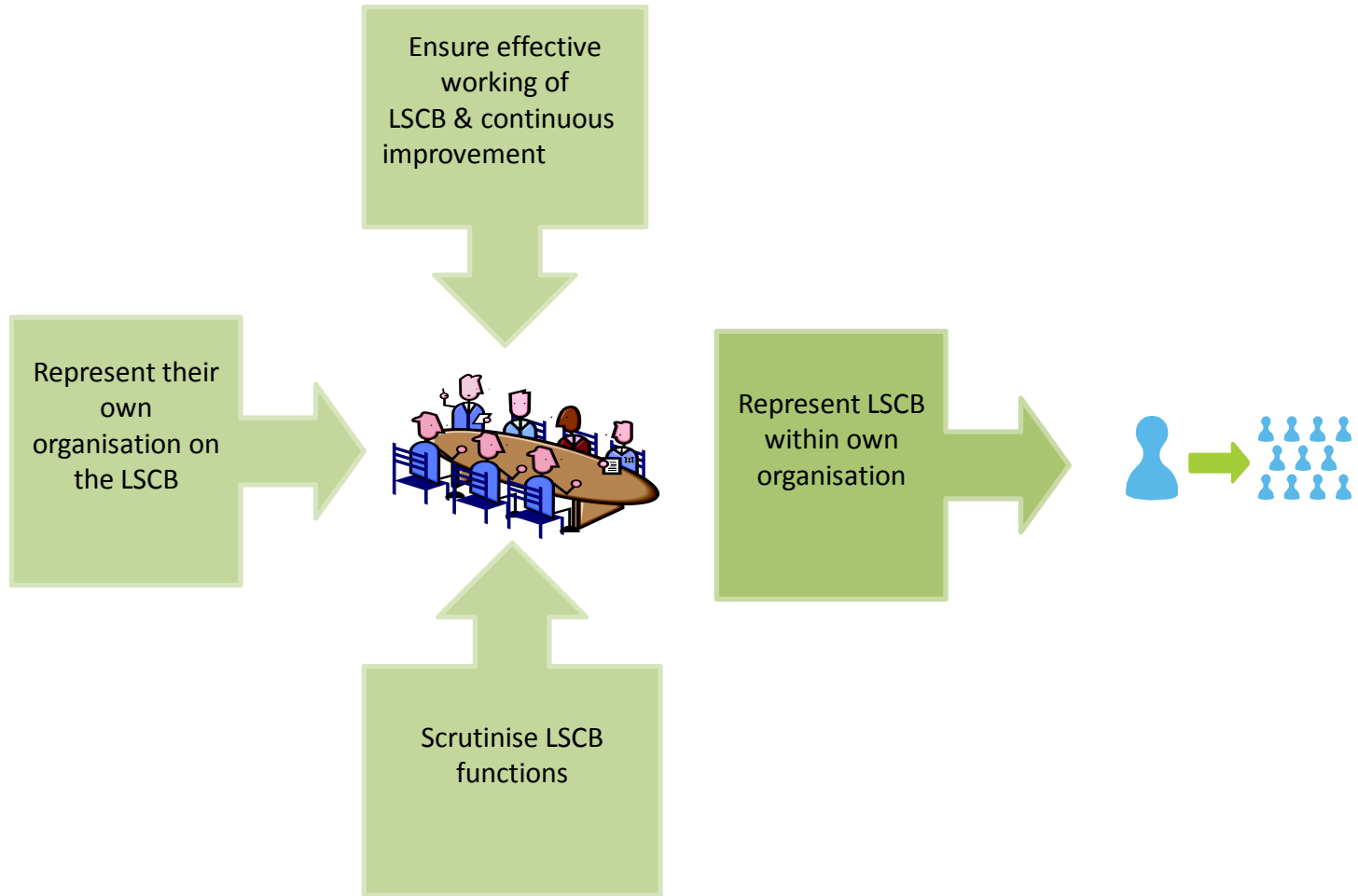
- Develop **policies** and **procedures**
- Participating in the **planning of services**
- **Communicating** the need to safeguard and promote the welfare of children
- Undertaking **Serious Case Reviews**
- Ensuring a co-ordinated response to **unexpected child deaths**
- Collecting and analysing **information about child deaths**
- **Monitoring and evaluating the effectiveness** of what is done and advising on ways to improve



Membership of the SCB



Roles & Responsibilities of Members



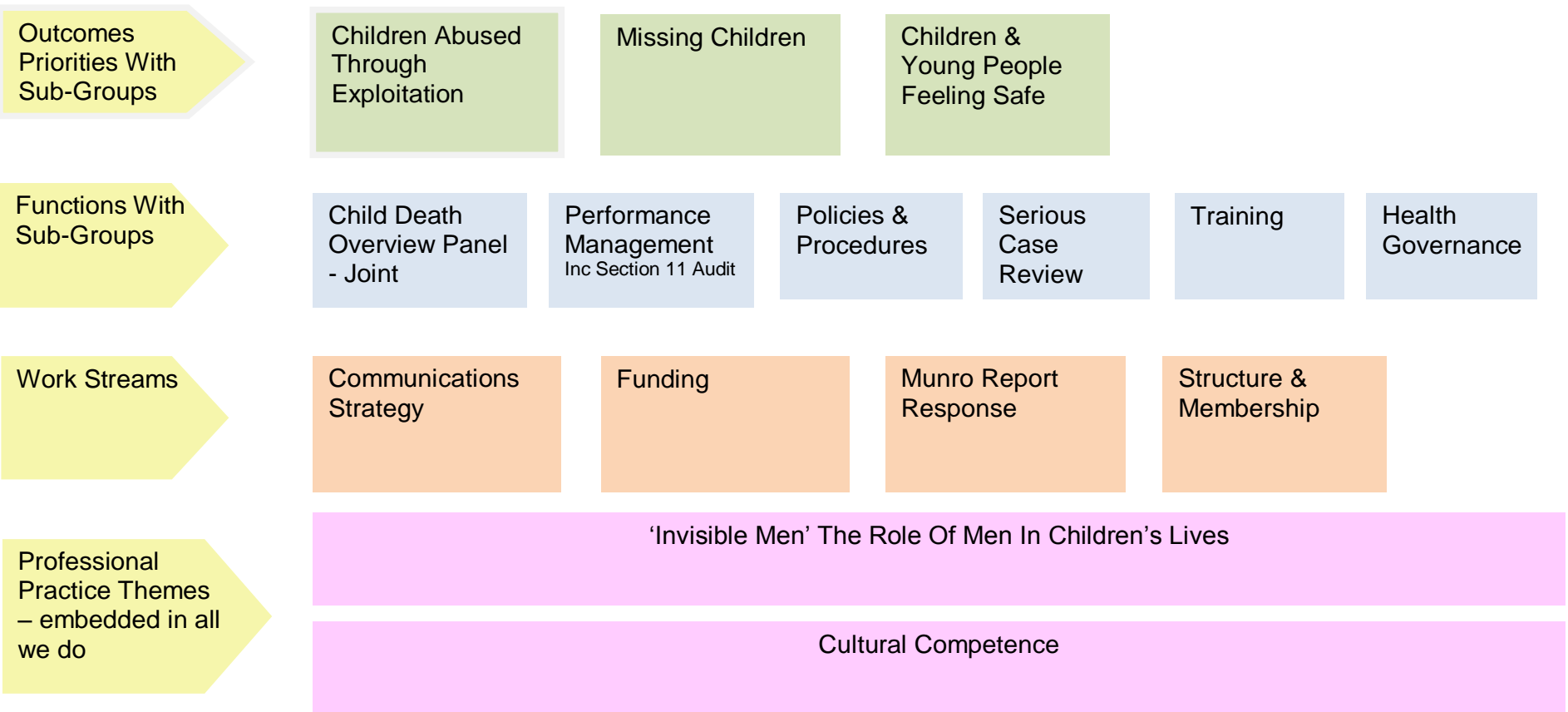
Who else works with SCB?

- Designated Doctor & Designated Nurse (Commissioning)
- Named Nurses and Named Doctors for:
 - Shropshire Community Health NHS Trust
 - SaTH
 - Shropshire and Telford & Wrekin Mental Health Foundation Trust
- Named Midwife
- Community Paediatrician & Lead Nurse for child deaths

- Principal Officer Schools & Early Years
- Local Authority Designated Officers
- Safeguarding Children Partnership Development Officer
- LSCB Support Services Officer
- Training and Development Team
- Team Leader Conference & Review & Officers
- Administrative staff

Safeguarding Children Board

Executive Group



2011-2012 LSCB Priorities Key Activity and Impact on the lives of children & young people

Board Priorities	LSCB Key Activities	Impact on the lives of C& YP
Children Abused Through Exploitation (CATE) Priority	<ul style="list-style-type: none"> Developed a draft 5 step model which helps identify localities where there maybe an emerging problem 	Known intelligence of sexual exploitation activity and related crime which helps us put our resources where needed.
	<ul style="list-style-type: none"> Independent Sexual Violence Advisory (ISVA) Service implemented in Shropshire and Telford & Wrekin. 	2 full time ISVAs and 2 Sexual Violence Support Workers have supported 30 clients in their first 7 months of operation.
	<ul style="list-style-type: none"> Support for children, young people and families who are victims of child sexual exploitation 	More young people and parents are engaging and accepting support. Reduced level of risk from sexual exploitation.
	<ul style="list-style-type: none"> Muslim Forum 	Highlighted problems ,challenged behaviours and cultural issues and tailored services to local Pakistani Muslim needs..
Getting The Right Help At The Right Time Priority	<ul style="list-style-type: none"> Information sharing between Early Intervention Teams and Social Care Team. 	Improved decision making means that appropriate support to children & families is now provided earlier
	<ul style="list-style-type: none"> Developing CAF Performance Framework 	Measures the outcomes for the early intervention teams
	<ul style="list-style-type: none"> Pre-Birth Pathway 	Vulnerable children are identified and supported earlier
	<ul style="list-style-type: none"> Family Connect consultation events with all stakeholders 	Knowledge and views are captured to shape the service.
Missing Children Priority	<ul style="list-style-type: none"> Missing Children data analysis 	Analysis of what is working well and what is not
	<ul style="list-style-type: none"> Joint Regional Protocol launch 	Robust mechanism for information sharing across all children in care providers both private and public
	<ul style="list-style-type: none"> Develop process for Children & Young People missing from care 	Return interviews will be a way for them to discuss feelings
	<ul style="list-style-type: none"> Involvement of Early Intervention and Cohesion services 	Early identification means we provide the right services at the right time
Children & Young People Feeling Safe Priority	<ul style="list-style-type: none"> Anti- Bullying consultations with young people, the Care Council, Youth Projects ,Play Groups and Disabled Children's Groups 	How were doing comments for our communications and anti-bullying strategy
	<ul style="list-style-type: none"> Parents Protect (sexual abuse) Events 	Raising parents awareness of sexual abuse
	<ul style="list-style-type: none"> Primary School mentoring by West Mercia Police Cadets 	Positive role models for Years 4 – 6
	<ul style="list-style-type: none"> Refreshed the LSCB website using a I Stay Safe campaign during anti-bullying week by Holmer Lake School on Beacon radio 	Promotion of anti-bullying week & LSCB website to 250,000 listeners. In first week of launch 600 hits on new website
	<ul style="list-style-type: none"> 10,500 anti-bullying chatterboxes created by children for children plus supporting curriculum delivered to schools 	Raising awareness of bullying amongst children, parents and schools. Recognised by the Children's commissioner as primary school safeguarding best practice.



Telford & Wrekin

Safeguarding
Children
Board