



**Telford and Wrekin
Community Safety Plan
2013 – 2016**

Year One

Foreword

Telford and Wrekin Community Safety Partnership has been in situ prior to the legal requirement from the Crime and Disorder Act 1998 to establish a Community Safety Partnership (CSP).

Section 17 of this Act places a legal duty on the responsible authorities to work together to tackle and reduce crime and disorder, including anti-social behaviour (ASB), domestic abuse, substance misuse, reducing re-offending and reducing the fear of crime.

The success of the CSP has been demonstrated by the strong partnership working in Telford and Wrekin and the commitment from partners to make a difference. The CSP has seen a number of achievements over the years and the current picture for Telford and Wrekin sees a:

- crime rate that is relatively lower than the national figures, a 61.5 per 1000 population compared to a national 67.6
- lower rates of violence against the person 12.1 compared to national 13.2
- lower rates of robbery locally 0.6 compared to 1.3 nationally
- lower rates of offences against vehicles locally 5.9 compared to 7.2 nationally
- 70% reduction (09/11) in the number of children entering the Youth Justice System for the first time.
- Continued reductions in the rate of re-offending, 29% of the Borough compared to a 33% national rate and low and declining use of custodial sentences.
- The focus on the recovery journey continues successfully with many clients staying abstinent, having stable accommodation and gaining employment.

Whilst we have delivered successes in the above areas we recognise that there are still challenges that together we will tackle. These include building on the good foundations we have for tackling:

- burglary, we will continue to support our Police colleagues on prevention, supporting the victims of burglary and dealing with offenders
- anti-social behaviour is always a key priority for the CSP and we have a number of effective resources in place from the Joint ASB Unit, ASB Reporting Line, CSO Target Team and Neighbourhood Delivery Groups.

However, we will continue to develop our approach to ensure that we are utilising the right mix of effective tools and powers and local resolutions. We will continue to encourage reporting amongst our communities and this is reflective in the ASB figures and demonstrates communities are showing confidence in reporting.

- Strengthening our Integrated Offender Management agenda
- Addressing the fear of crime
- Community Engagement

Our early intervention, targeting and strengthening families approach will continue to receive support from the Community Safety Partnership, this approach supports our focus on working with families and individuals that require intensive support, this work undoubtedly supports our approach on reducing offending, re-offending and breaking the cycle.

Working with Police and Mencap we supporting a national scheme called **Safe Places which** aims to help vulnerable disabled people who become anxious, concerned or victimised whilst in a public place. We will support the process of providing a refuge in an identified local shop or business where a phone call can be made to a trusted friend or family member, who can collect them or advise them on what they need to do.

Another partnership initiative is to develop 3rd party reporting lines which allows victims of hate crime incidents to record such incidents at one of Telford and Wrekin buildings away from the police station.

Throughout all of our work the Governments 'Making Every Contact Count' is pivotal, the range of services that engage with communities across that partnership provides an ideal opportunity to engage, support and signpost members of the community to appropriate services, whether that is getting a smoke alarm fitted, getting support for domestic abuse, advising about local children and family centre's, activities in the area for children and young people, how to get in contact with the Local Policing Team.

We look forward to continuing to work together to make Telford and Wrekin a safe place.

Nav Malik

Superintendent

Board Members

The following list details both the Responsible Authorities and our wider membership of the Community Safety Partnership (CSP).

The most recent changes have also been reflected with Clinical Commissioning Groups from April 2013 being required to be a member of the CSP, which sees the continuation of partners working together for the benefit of preventing crime and disorder and addressing the causes of crime in Telford and Wrekin.

- Telford and Wrekin Council
- West Mercia Police
- West Mercia Probation
- Shropshire Fire and Rescue Service
- Clinical Commissioning Groups
- Wrekin Housing Trust
- Rights and Fairness Telford
- TTC2000
- Crown Prosecution Service
- Council Voluntary Services
- Victim Support

Partnership Priorities, Performance and Delivery

The Community Safety Partnership Board has identified the following four priorities for the Partnership:

- 1. Overall crime is reduced in the Borough**
- 2. Anti-social behaviour is reduced – to include environmental crime**
- 3. Greater Community Cohesion in the Borough**

4. To reduce the fear of crime –keeping residents safer in Telford & Wrekin

The priorities will be reviewed on an annual basis to ensure that the Partnership is focussed on the addressing the community safety issues for communities in Telford and Wrekin.

These priorities are supported by a performance framework (appendix a) and delivery plan (appendix b), the operational strand of the framework.

The Community Safety Partnership structure provides a mix of strategic direction and operational delivery. Within the structure we are also introducing the Anti-Social Behavior Risk Assessment Conference (ASBRAC), which ensures those victims of ASB that have been identified as being at a higher risk level receive targeted support from a range of agencies and interventions are in place at an early stage. The interventions ensure that the support is not only there for victims but the appropriate action is taken against perpetrators. This type of action will directly link with police led ASB Risk Management plans.

The Board has overall responsibility to ensure the delivery of the priorities; they receive regular updates on the performance of the Partnership.

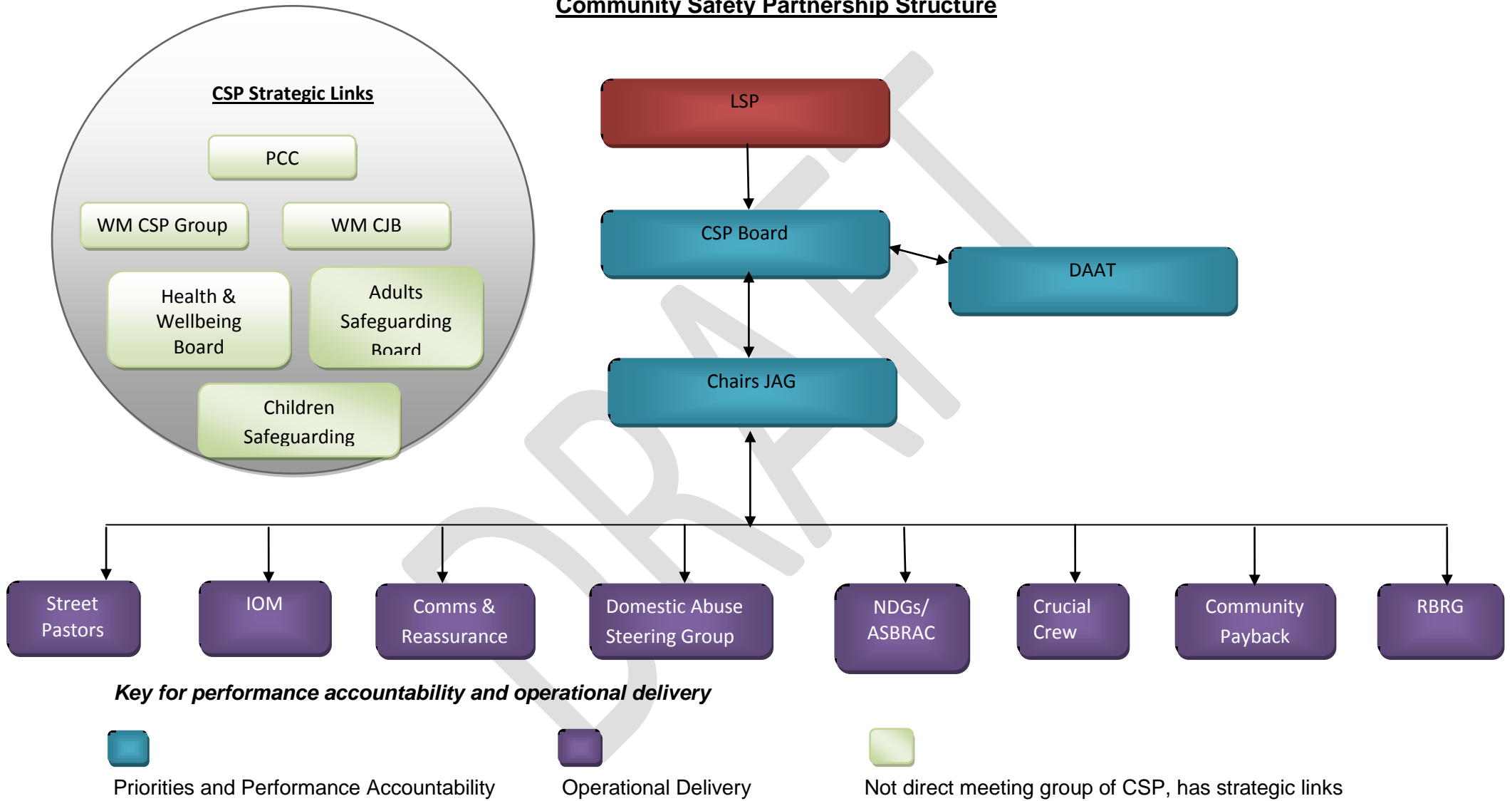
The priorities have also been referenced against the Police and Crime Commissioners (PCC) priorities to ensure that our local approach is feeding into the wider West Mercia plan.

CSPs funding arrangements from April 2013 will be changing. All previous Home Office CSP funding will be transferred to the PCCs. This sees a marked change in funding arrangements for delivering community safety initiatives. CSPs will submit bids for funding to the PCC to deliver the local priorities.

The Partnership Plan has also been referenced against the Joint Strategic Needs Assessment, State of the Borough Report, Health and Wellbeing Strategy, Telford and Wrekin Council Medium Term Plan to ensure that we have an effective and efficient delivery of the shared priorities that are cross cutting against many partnership agendas.

The Partnership Plan also supports both Domestic Abuse and DAAT Strategies and action plans. These are being developed to provide a specific focus on the cross cutting issues around domestic abuse and substance misuse for partner agencies.

Community Safety Partnership Structure



Priorities

The following information provides an overview of the aims and delivery that are aligned to the priorities. Some the areas of work are cross cutting and deliver against more than one priority/aim.

Priority one: Overall crime is reduced in the Borough

The aims for this priority are:

- Reduce offending and reoffending
- Reduce domestic abuse and repeat incidents of domestic abuse
- Reduce the number of violent assaults, particularly serious violent crime and assault with injury
- Reduce serious acquisitive crime (burglary, robbery and vehicle crime)
- Reduce deliberate vehicle fires and deliberate secondary fires
- Reduce sexual exploitation of women and girls
- Reduce business crime
- Reduce the harm associated with drugs and alcohol misuse by adults and young people
- Increase reporting of Hate Crime
- Reduce overall crime

How we will deliver this priority

As with all of the priorities, the CSP utilises the range of power and tools across partners to deliver and positively impact reducing crime and disorder. The **CCTV** provision that is managed by the Councils Community Safety Team continues to support the prevention and detection of crime and reassure local communities.

The various domestic abuse programmes continue to **support victims and their families** and we will continue to build strong relationships with the voluntary sector to provide additional support in **protecting vulnerable people**.

The new Integrated Offender Management (IOM) model focuses an approach on reducing re-offending by **working together to reduce reoffending**, managing offenders and ensuring mechanisms are in place to **challenge and change offending behavior**.

Early intervention and prevention remains a key focus, delivering **personal safety and crime prevention advice**, providing victims of burglary and surrounding communities with increased security measures and visible promotional material that agencies are working together..

Continue to work as partners in reducing and tackling sexual exploitation of women and girls, this involves the **work around Child sexual Exploitation (CSE) to include, early intervention, engagement and support.**

Work to **empower local business communities** in addressing business crime by taking appropriate security measures, and working together to create a support **network support amongst local businesses.**

Drug and alcohol misuse has an impact on a wide range of services not to mention the person and their family. By working with those who have dependencies will provide **opportunities to access support services, training, employment and community based programmes to assist their journey to recovery.** To build on the success of the partnership approach in supporting and tackling night time economy issues, supported by Street Pastors and Taxi Marshalls with the aim of reducing the risk of harm to all and reducing serious violent crime which is often linked with the misuse of alcohol.

Introduction of **3rd party reporting** Line, enabling those who are suffering to report incidents via of hate incidents and a **safe place network**, to support those most vulnerable.

Continue the approach around **early intervention, prevention** and targeted work by supporting young people and families in **breaking the cycle.**

Priority two: Anti-social behaviour is reduced – to include environmental crime

The aims for this priority are:

- Reduction in reported ASB Categories and supporting victims

How we will deliver this priority

The ASB priority focuses on our approach in **reducing ASB, supporting victims** and ensuring **perpetrators are dealt** with effectively.

We are committed to the continuation of the **ASB Reporting Line** to encourage reporting and ensure that ASB incidents are dealt with by the right agency both **timely and effectively**. The **Joint ASB Unit** links in with a number of processes including but not limited to the ASB Reporting Line and the co-located ASB Unit. The **Neighbourhood Delivery Groups** (NDGs) provide the essential locality based tasking response in addressing ASB in local communities; various partners bring invaluable knowledge of communities and the issues that are most effecting them, allowing the NDG to develop a multi-agency response. The introduction of **Anti-Social Behaviour Risk Assessment Conference** (ASBRAC) will ensure that we have the mechanism to deal with the more complex and higher level ASB cases to provide the wrap around service that many ASB cases require. The ASBRAC will compliment police led ASB Risk Management plans.

Early intervention, Engagement and Enforcement, a strand through all priorities ensuring that early signs of offending behavior are dealt with effectively and efficiently. The Co-located ASB Unit working across the partnership to ensure that we work with young people and their families and where necessary enforce through a series of ASB interventions. Promote the range of **positive activities** that are available to young people as a **diversionary measure** away from ASB, work with our Youth & Community Colleagues, Targeted Youth Support and Family Intervention Teams to work with those young people that have been identified as being involved in ASB / risk taking behavior.

Communication campaigns links in with the above but also needs to be raised with the wider community, **empowering communities, encouraging community engagement and social responsibility**.

Community Payback Scheme, a yearly project with Probation to use offenders to carry out environmental tasks in local communities, tasks to include sweeping, litter

picking, removal of rubbish fence painting.

Priority three: Greater Community Cohesion in the Borough

The aims for this priority are:

- Increase engagement and consultation with local communities to address issues of concern
- Increase in diversionary and positive activities
- Increase the number of volunteers delivering civic pride initiatives

How we will deliver this priority

We will ***work with local communities*** to ensure we begin to understand what their needs are, ***working in partnership*** to ***empower*** them to instigate positive change in uniting them addressing and preventing crime and disorder.

Utilise the range of ***diversionary and positive activities*** that are in place and look to support the increase in capacity where we have identified need. We will continue to offer alternatives to potential offending behaviour and positive activities are an essential part of ***Early intervention***

Work with communities to ***celebrate diversity*** within Telford and Wrekin and help ***challenge prejudices***. Through ***cohesion*** we want to build a strong sense of ***civic pride*** across the Borough.

Priority four: To reduce the fear of crime – keeping residents safer in Telford & Wrekin

The aims for this priority are:

- Reduce the fear of crime
- Increase road safety

How we will deliver this priority

Public perception of crime is often fuelled by the media; we will ensure that we are making full use of ***promoting the success stories which involves*** good practice and partnership working and address negative public perception. Partners have a range of ***communication methods*** available to them and as a Partnership we will make full use of collectively promoting positive messages.

We will ensure that we have a ***visible presence*** as agencies and collectively as a Partnership within communities and will work to ensure that communities know we are ***working together to make a difference***.

The ***Safer Roads*** Partnership receives full support from the CSP and will continue to do so. We will continue to deliver ***personal safety awareness*** campaigns with young people including events like ***Crucial Crew*** and will work to develop this further to offer engagement with young people about their safety.

The police Operation Safer Outside School will continue further supported by ***Police community support Officers in schools will who*** support and enhance the school system. The ***Bike Ability*** maintaining safety and health promotion.

CCTV offers not only the support in the prevention and detection of crime but provides reassurance to the general public. The CCTV network across Telford and Wrekin continues to be managed by Telford & Wrekin Council's Community Safety Team.

Crime prevention advice and support is provided to victims of burglaries and shed break ins and to residents surrounding those identified as vulnerable as most at risk. As a partnership we will continue to support the ***night time economy***, supported by street pastors, licensing, taxi marshalling and youth workers providing that all important the visible presence ***in keeping residents safe and reducing potential***

<i>risk</i>

Delivering the Priorities

Each priority is supported by a delivery plan that sits with one of the CSP groups e.g. Neighbourhood Delivery Groups, Reducing Business Risk Group, Domestic Abuse Steering Group. The Delivery Plans also identifies which priorities and aims the meeting groups can support on. The Delivery Plan becomes a standing agenda item at each groups who will ensure that they deliver on the key actions supported by the Community Safety Team. The Delivery Plans ensure that we turn priorities into actions.

Chairs of the meetings groups will be asked to present regular updates against these Delivery Plans to the Board, and the performance framework will demonstrate the success measures.

We recognise that due to the nature of community safety, these Delivery Plans need to be fluid and adaptable to change; they will be monitored regularly by the Community Safety Team and any changes of direction to be noted to the Community Safety Board.

Delivery Plan - Neighbourhood Delivery Group

This is an overall Delivery Plan for Neighbourhood Delivery Group, individual action plans will be developed by the group. This demonstrates the CSP Priorities that Neighbourhood Delivery Group are required to deliver on and what actions/work programmes will support this. Chairs of the groups will meet on a quarterly basis to review progress.

Priority	Aim	Action/Work Programme	Measure/outcomes	Comments/Progress
Overall Crime is reduced	A4 Reduce serious acquisitive crime (burglary, robbery and vehicle crime).	<ul style="list-style-type: none"> • Crime prevention – provide crime prevention support to communities, victims, witnesses and the vulnerable • Raise awareness of actions that can be taken to deter burglary, vehicle crime. 		
	A5 Reduce deliberate vehicle fires and deliberate secondary fires	<ul style="list-style-type: none"> • Support Fire Service on awareness campaigns • Tackle environmental factors which give rise to arson incidents. • NDG to initiate any further actions required. • Educational awareness with young people – Crucial Crew 		
	A10 Increase reporting of Hate Crime	<ul style="list-style-type: none"> • Tension monitoring process • Safe Place 		

Priority	Aim	Action/Work Programme	Measure/outcomes	Comments/Progress
ASB is reduced – includes environmental crime	A12 Reduction in reported ASB categories	<ul style="list-style-type: none"> • Develop targeted action plans based on most problematic areas with a partnership response. • Utilise all partner information in addressing ASB • Where appropriate maximise the use of powers and tools available to tackle ASB • Utilise the deployment of mobile CCTV. • Use Restorative Justice Programme for community resolution • CSO Targeted Patrol, providing additional high visibility patrols within local communities. 		
	A13 Environmental, Nuisance and Personal ASB is reduced	<ul style="list-style-type: none"> • Develop and support action plan in reducing the volume of fly tips across the Borough. • Identify and target persistent offenders • Build community involvement in preventing ASB. • Maximise the use of the Community Payback Scheme. 		

Priority	Aim	Action/Work Programme	Measure/outcomes	Comments/Progress
Cohesion is increased in the Borough	A14 Increase engagement and consultation with communities to address issues of concern	<ul style="list-style-type: none"> Ensure mechanisms are in place to identify and respond to community issues Support the PACT process 		
	A15 Increase in diversionary and positive activities	<ul style="list-style-type: none"> Continue to utilise Street Sports in targeted areas Refer young people for support from Youth and Community, Targeted Youth Support 		
	A16 Increase the number of volunteers delivering civic pride initiatives	<ul style="list-style-type: none"> Support delivery of the Street Champions programme Street Pastors support particularly in Central and Wellington NDG 		
The safety of residents is increased (includes reducing the fear of crime)	A17 Reduce fear of crime	<ul style="list-style-type: none"> Promote the use of the Partnership website – safertelford.org.uk Use Safer Telford to promote positive outcomes and projects. 		

Delivery Plan Business Against Crime

This is an overall Delivery Plan for Business Against Crime Group, action plans may be developed by the group. This demonstrates the CSP Priorities that the Business Against Crime Group are required to deliver on and what actions/work programmes will

Priority	Aim	Action/Work programme	Measures/Outcomes	Comments/Progress
----------	-----	-----------------------	-------------------	-------------------

support this. Chairs of the Groups will meet on a quarterly basis to review progress.

DRAFT

Overall Crime is reduced in the Borough	A7 Reduce business crime	<ul style="list-style-type: none">• Communication network for local businesses• Sharing of intelligence that may impact on the business community• Provide crime prevention advice• Encourage reporting of crime• Reduce the fear of crime – encourage investment and retention of businesses• Network opportunities• Addressing, preventing and tackling business crime through a partnership approach• Receive real time alerts through Dotmailer		
---	-----------------------------	--	--	--

Delivery Plan Domestic Abuse

The Domestic Abuse Action Plan sits within the Domestic Abuse Strategy and monitored by the Domestic Abuse Steering Group. Chairs of the Groups will meet on a quarterly basis to review progress.

Aim	Key Actions	By Whom	How and when measured
Relevant partners working together to formulate funding bids and increase opportunities for further funding.	Telford and Wrekin to identify further funding opportunities to ensure sustainability.	Community Safety in partnership with West Mercia Police.	Annually, success criteria sufficient funding obtained through outside funding streams to enable sustainability.
To sustain the Domestic Abuse Officer Post.	Evaluation of provision, monitor role, engage the PCC in process.	Community Safety in partnership with West Mercia Police.	Quarterly reporting at the Domestic Abuse Steering Group, success criteria post sustained.
Working in partnership with the Police for implementing the Go ahead Order	Raising awareness about this Order in the borough of Telford and Wrekin.	Community Safety	Consultation required with the Police.
To increase provision of Sanctuary.	Complete a bidding form for the PCC	Community Safety.	April 1 st 2013. Success criteria is increase in budget and the number of victims being enabled

Aim	Key Actions	By Whom	How and when measured
			to live in their own homes.
Review current housing provision for victims of Domestic abuse and to alternate provision to ensure safety of the victims.	To ensure that this area is reviewed within the Housing Strategy	Cohesion Services	Housing Strategy being approved by both the Board and Cabinet members. Appropriate safe housing provision established for victims of domestic abuse.
Appropriate provision for perpetrators of domestic abuse	To ensure that this area is reviewed within the Housing Strategy	Cohesion Services	Housing Strategy agreed by both the Board and Cabinet members. Appropriate housing established for homeless perpetrators.
Identifying gaps in service provision	Analyse data provided by Family Connect	Community Safety	Quarterly in the Domestic Abuse Steering Group. Success criteria is improved service provision.
Training for professionals	Develop relevant train the trainer/facilitator programmes.	Community Safety	Draft programme for Domestic Abuse Steering Group meeting April 2013. Programme implemented and embedded by April 2014. The number of participants completing the training and positive feedback.
Raising awareness of Domestic Abuse	Continue to build upon existing	Domestic Abuse Co-ordinator	Telford becoming a White Ribbon

Aim	Key Actions	By Whom	How and when measured
	work undertaken within the White Ribbon Campaign		Town 2014.
Establishing an alternative to the "Freedom Programme"	Review the current Freedom Programme and develop a new alternative programme.	Domestic Abuse Co-ordinator.	April 2013. Agreed by Steering group.
Rolling out CRUSH facilitation across Telford and Wrekin	Monitor the groups being undertaken and ensuring that trained facilitators are delivering the programme.		April 2013. Attendance at the groups and positive feedback received.

Delivery Plan IOM

Priority	Aim	Action/Work Programme	Measure/outcomes	Comments/Progress
Overall Crime is reduced in the Borough	Reduce offending and reoffending	<p>Probation Lead on this work programme and report to the CSP Board by exception.</p> <p>The strands from the Reducing Reoffending Strategy are:</p> <ul style="list-style-type: none"> • Accommodation • Education, training, employment • Mental and Physical Health • Drugs & Alcohol • Attitudes, Thinking and Behaviour • Finance, Debt and Benefits • Children, Families and Support Networks 		

Delivery Plan -Communications and Reassurance Group

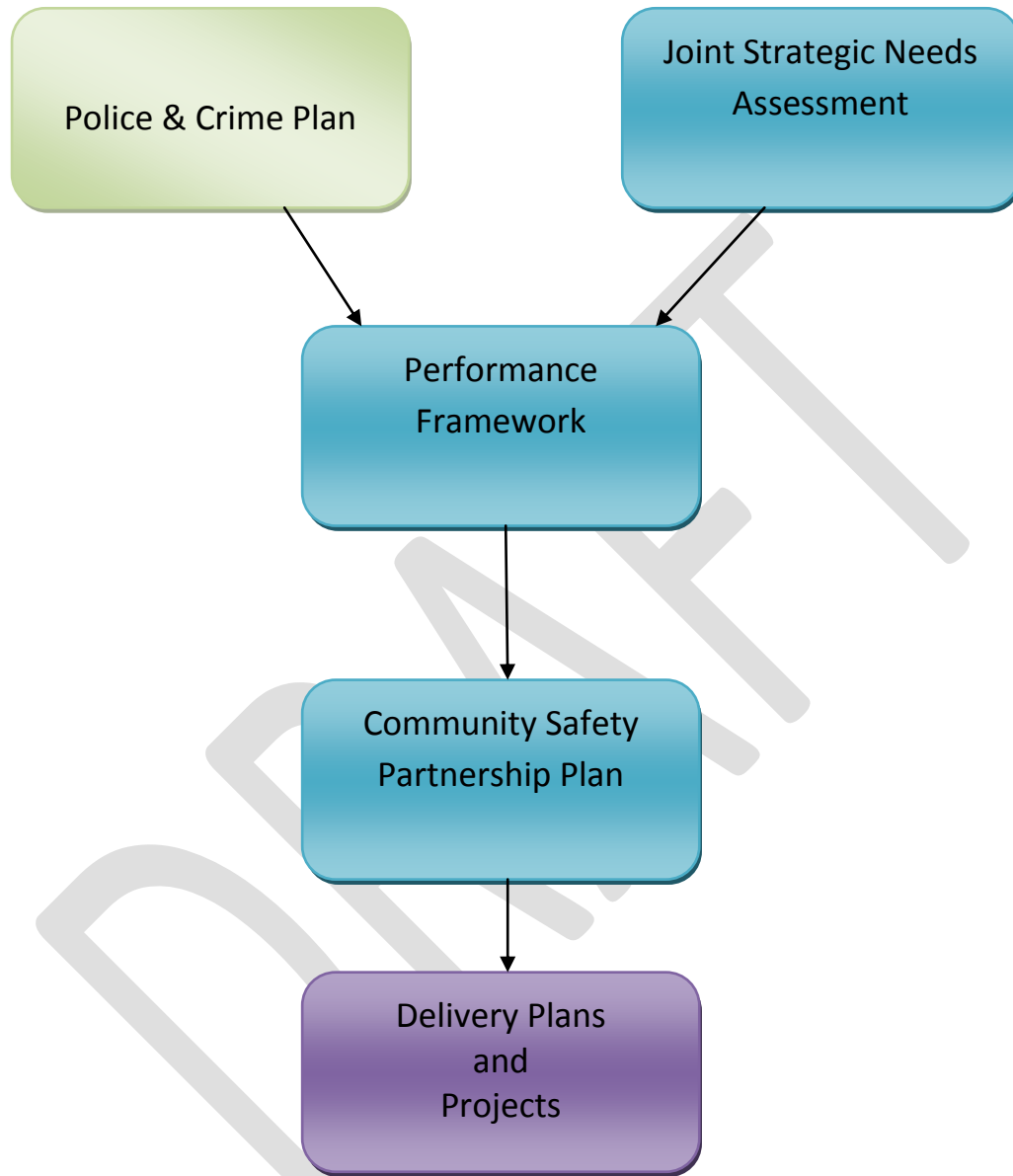
This is an overall Delivery Plan for Communications and Reassurance, individual action plans will be developed by the group. This demonstrates the CSP Priorities that Communications and Reassurance are required to deliver on and what actions/work programmes will support this. Chairs of the groups will meet on a quarterly basis to review progress.

Priority	Aim	Action/Work Programme	Measure/outcomes	Comments/Progress
Overall crime is reduced in the Borough	A2 Reduce domestic abuse and repeat incidents of domestic violence	<ul style="list-style-type: none"> • Support the promotion of domestic abuse support services and campaigns <ul style="list-style-type: none"> • White Ribbon • CRUSH • The Journey 		
	A4 Reduce serious acquisitive crime (burglary, robbery and vehicle crime)	<ul style="list-style-type: none"> • Promote crime prevention messages. 		

Priority	Aim	Action/Work Programme	Measure/outcomes	Comments/Progress
ASB is reduced – includes environmental crime	A12 Reduce deliberate vehicles fires and deliberate secondary fires	<ul style="list-style-type: none"> • Annual Celebrate safely campaign • Promote personal safety 		
	A13 Environmental, Nuisance and Personal ASB is reduced	<ul style="list-style-type: none"> • Inform and educate the community about the implications of ASB and environmental nuisance, including how to report through the ASB reporting line. 		
Cohesion is increased in the Borough	A14 Increase engagement and consultation with communities to address issues of concern	<ul style="list-style-type: none"> • Ensure mechanisms are in place to identify and respond to community issues • Support the PACT process/Police surgery engagement process 		

Priority	Aim	Action/Work Programme	Measure/outcomes	Comments/Progress
The safety of residents is increased (includes reducing the fear of crime)	A17 Reduce fear of crime	<ul style="list-style-type: none"> • Promote the use of the Partnership website – safertelford.org.uk • Promote regular information about successes, achievements and plans. • Utilise the range of communications methods available across the partnership. • Develop a communication campaign to address the fear of crime and promote seasonal information. • Build confidence and reassurance amongst communities by a rapid response to local issues. • Encourage reporting and the mechanisms that residents can report issues to. • Promote personal safety advice. 		

Community Safety Partnership Priorities and Delivery Flowchart



Contacts:

Please contact Team Leader for Community Safety:

Paul Fenn
Community Safety Partnership
Darby House
Family and Cohesion Services
5th Floor C - Darby House
01952 382107

E-mail: Paul.fenn@telford.gov.uk

DRAFT