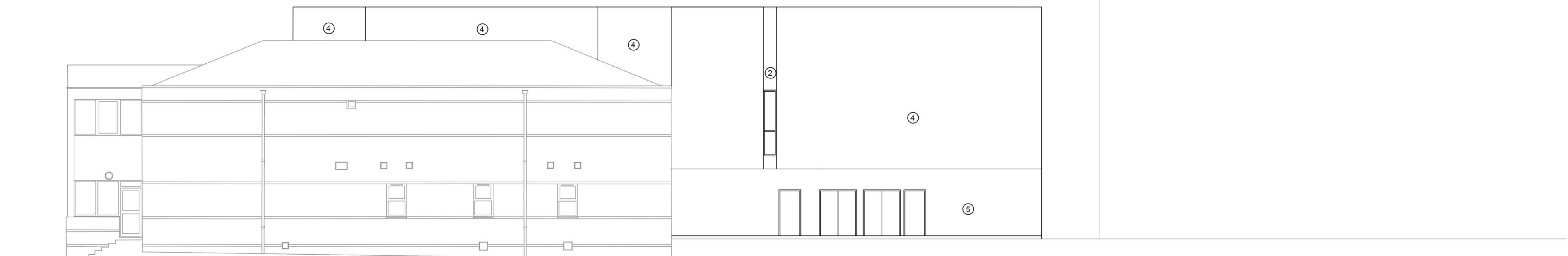
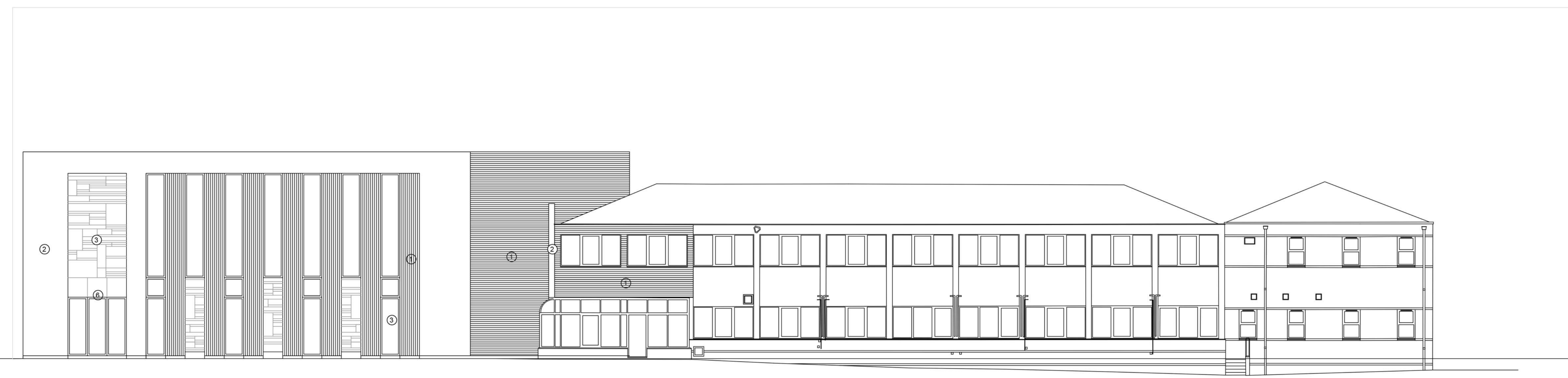
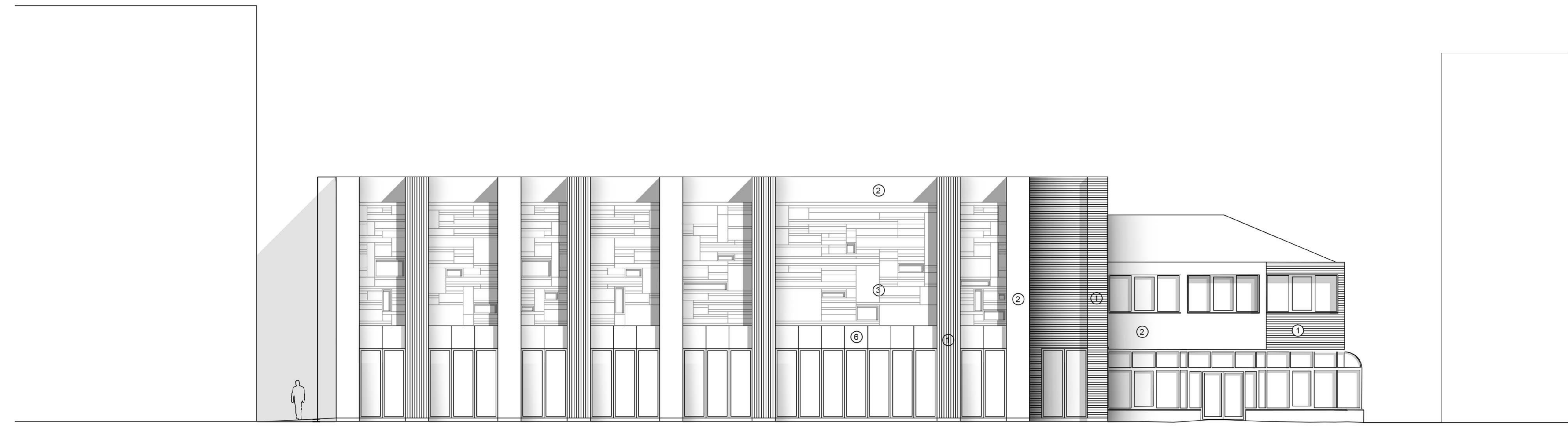


- Key**
- 1 . Trespa Timber Effect Cladding
 - 2 . Dark Grey Render
 - 3 . Zinc Cladding
 - 4 . Light Grey Render
 - 5 . Shot Blast Block
(Besblock Architectural Masonry
Range - Colour TBC)
 - 6 . Grey Trespa Cladding



Rev	Description	By/CR	Date



Architecture • Asset Management • Mechanical & Electrical Consultancy
 Building Innovation Telford • Project Management • Cost Consultancy
 Building Innovation Telford
 Wellington Civic Offices, Leakin Way, Wellington, Telford,
 Shropshire, TF1 1LX, U.K.
 Telephone: +44(0)1952 384502
 Email: enquiries@bit-telford.gov.uk
 Web: <http://www.bit-telford.gov.uk/business>

PROJECT: Meeting Point House

DWG TITLE: Proposed Elevations

SCALE: 1:100 @ A0	DRAWN: JA	CHECKED:
DATE: 11.08.15	DWG NO: 15023-P009	