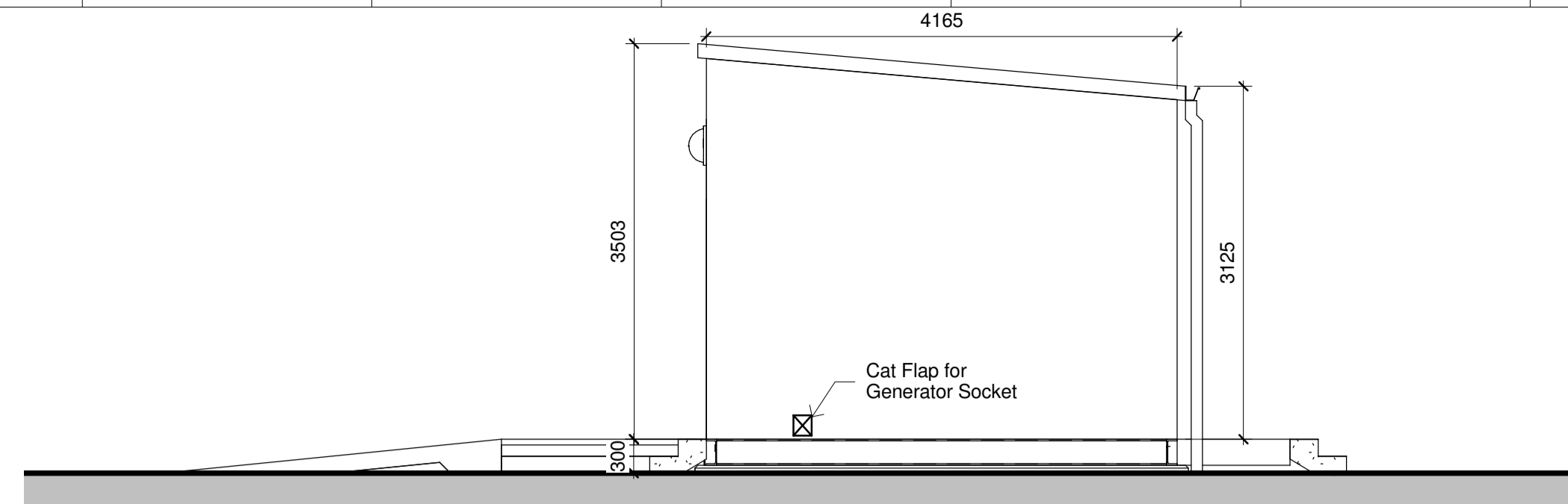
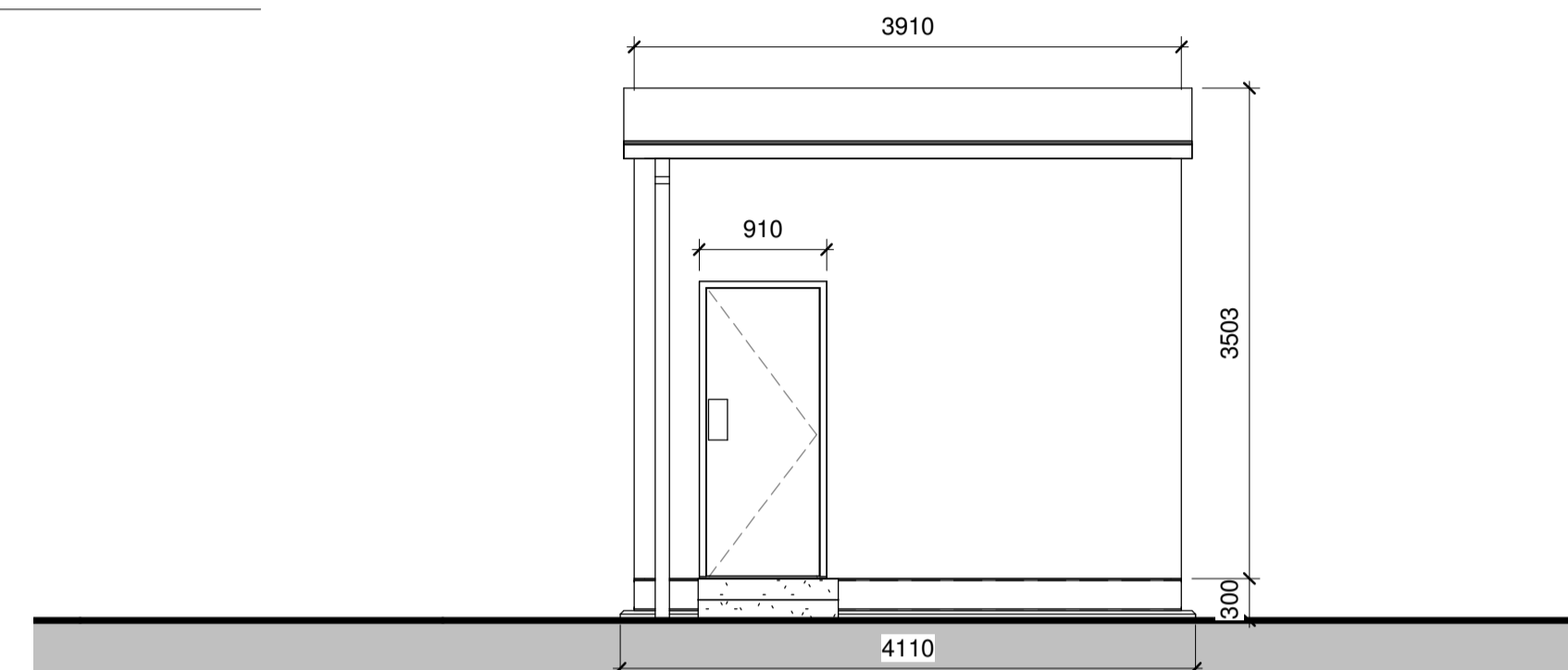


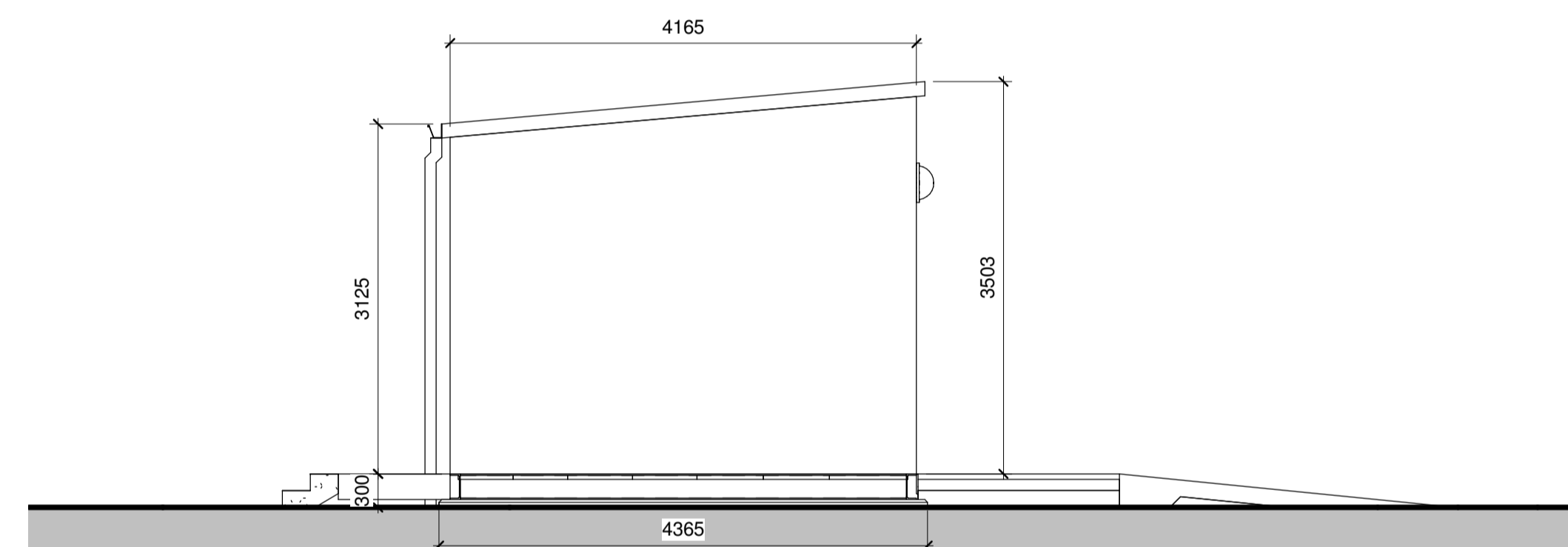
**2 Front Elevation**  
1 : 25



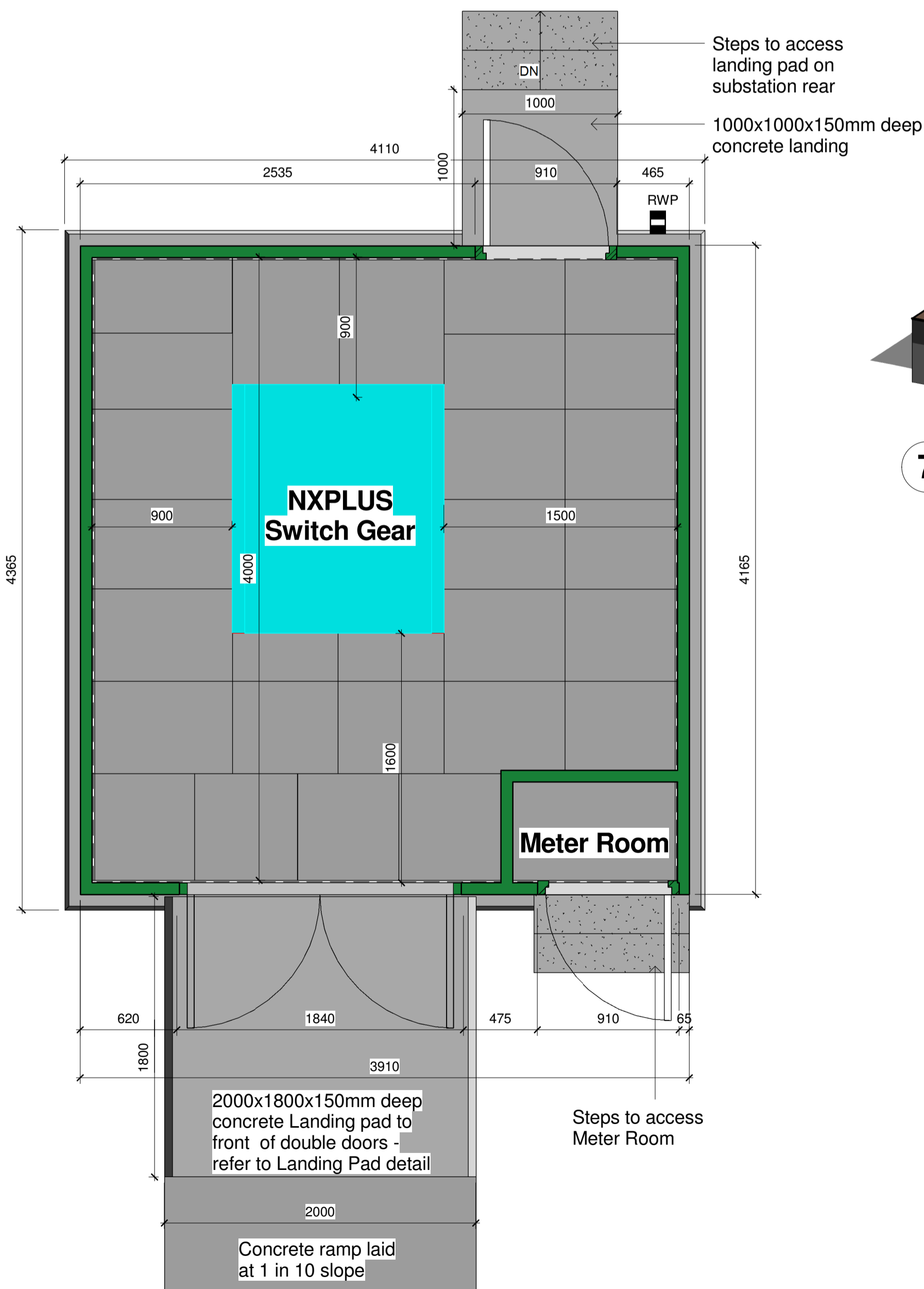
**3 Right Elevation**  
1 : 50



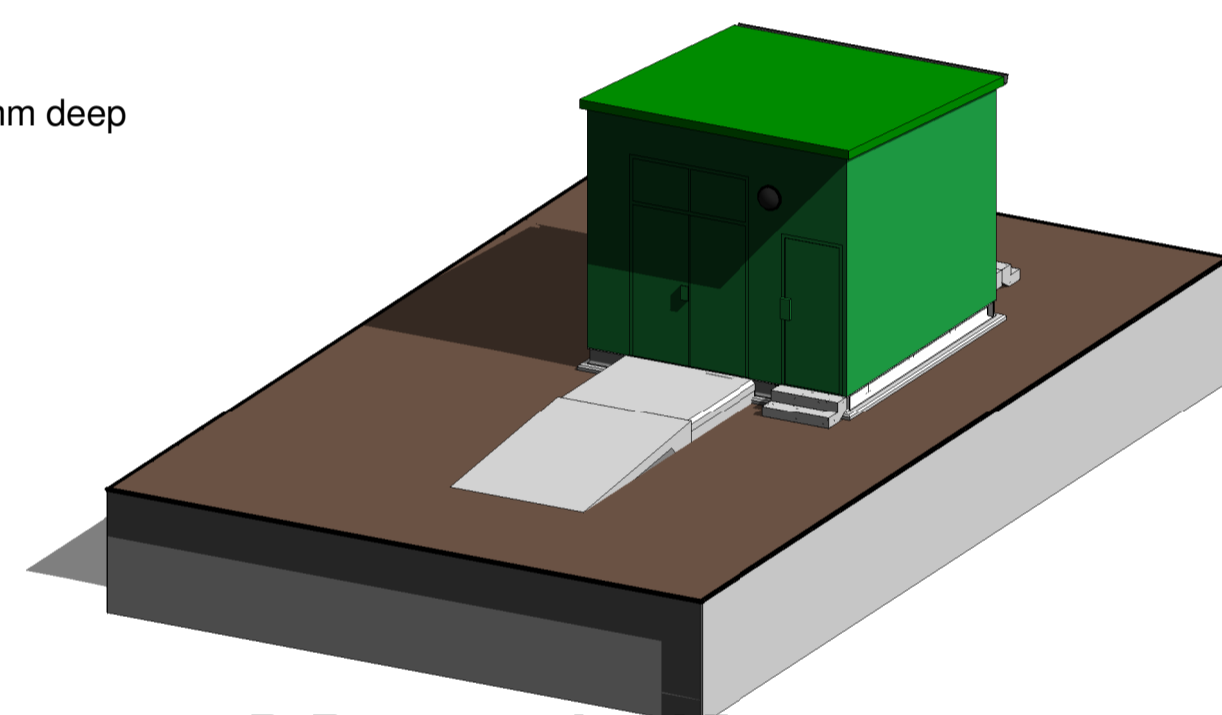
**4 Rear Elevation**  
1 : 50



**5 Left Elevation**  
1 : 50



**1 Floor Plan Layout**  
1 : 25



**7 3D Perspective View**

**Key to Drawing Items**

**Drawing number key**  
P678(01)-25-01-O  
 - P: Project number  
 - 678: Building number  
 - 01: Sheet number  
 - 25: Revision number  
 - 01: Revision number  
 - O: Original

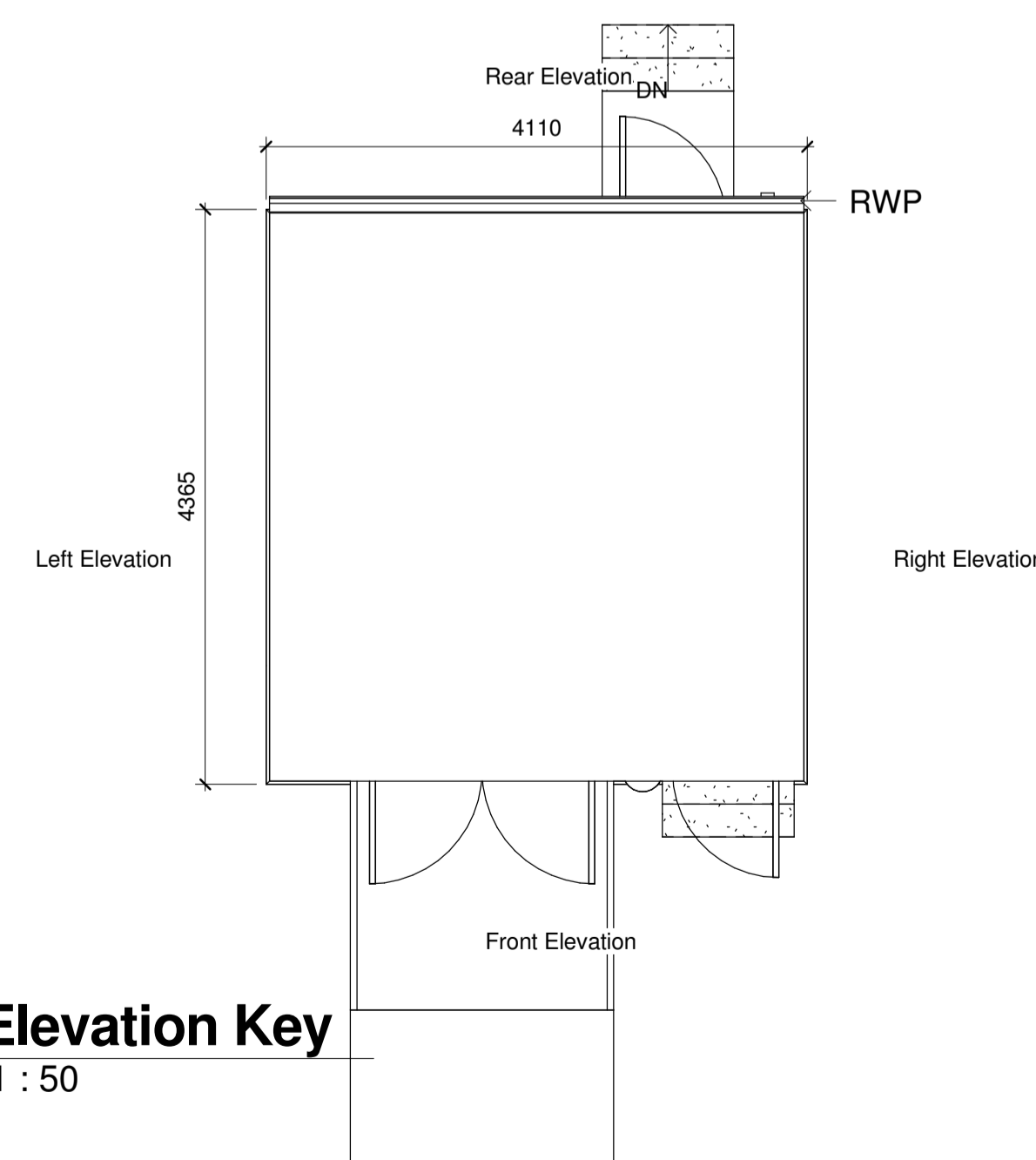
**Key to section lines**  
 - 6: Item number on the relevant sheet where the section is shown  
 - 03: The arrow points in the section view direction  
 - 03: Sheet number the section is on  
 - This example means the section is shown in item 6 on sheet 03 (in this case the sheet will be P678-25-03)

**Key to elevation symbol**  
 - 01: Item number on the relevant sheet where the elevation is shown  
 - 2: The arrow points in the view direction  
 - 01: Sheet number the elevation is shown on  
 - This example means the elevation (which is looking from the location of the circle in the direction of the arrow) is shown in item 2 on sheet 01 (in this case the sheet will be P678-25-01)

**Level key**  
 - Foundations: Title of level  
 - -600: Vertical spacing in mm from datum level (0 is at Ground Floor level)

**Item label key**  
 - Section E: Title of item  
 - 6: Item number  
 - 1 : 50: Scale of item  
 - 6: Item number

**Gridline key**  
 - A: Grid line reference (can be a letter or number)



**6 Elevation Key**  
1 : 50

**NOTES:**

- The housing is to be of GRP construction sitting on a concrete base with approximately 70mm of the concrete visible above finished ground level.
- The External wall colour to be BS4800 14-C-39 (Holy Bush Green) in a gelcoat finish.
- A minimum ground bearing pressure of 50kN/m<sup>2</sup> must be achieved at formation level. This should be checked by a competent engineer and if 50kN/m<sup>2</sup> is not achieved, the design engineer should be consulted immediately.
- All drawings should be read in conjunction with all other drawings.
- The GRP container to obtain a u-value of 0.35w/m<sup>2</sup>k<sup>o</sup>
- The GRP container is to provide a security rating of LPCB2 / SR2

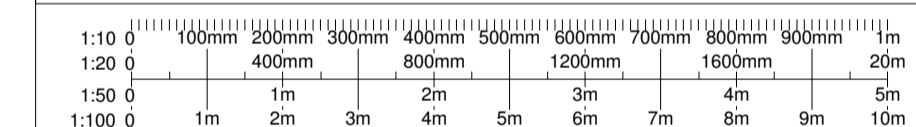
Finished ground level around bund wall to be a minimum 70mm below top of wall all around. Formed from aggregate compacted in layers of 150mm thickness. DTP Type 1 Material or Similar to be used.

**Sheet List**

Sheet Number	Sheet Name
P678(01)-23-01	UKPN Containerised Substation Construction Notes
P678(01)-25-01	UKPN Containerised Substation Plans and Elevations
P678(01)-25-02	UKPN Containerised Substation Foundation General Arrangement And Details
P678(01)-25-03	UKPN Containerised Substation Duct Plan
P678(01)-25-04	UKPN Containerised Substation Steel Subframe Layout
P678(01)-25-05	UKPN Containerised Substation Dura Slab Flooring Plan
P678(01)-25-06	UKPN Containerised Substation 3D Sections
P678(01)-25-07	UKPN Containerised Substation Steel Subframe Details and Sections
P678(01)-25-08	UKPN Containerised Substation Landing Pad & Steps Details
P678(01)-26-01	UKPN Containerised Substation LV Layout
P678(01)-27-01	UKPN Containerised Substation Reinforcement Plan And Sections
P678(01)-29-01	UKPN Containerised Substation Planning Drawing
P678(01)-33-01	UKPN Containerised Substation Earthing Layout

Revision Number	Revision Date	Revision Description	NJ/EG	CF
O	10/12/2014	Original		

**Revision Schedule**



Copyright of g2Energy. Do not scale this drawing

All reasonable care and diligence has been taken in the accuracy & content of this drawing. g2Energy should be consulted prior to the re-use of this drawing.



Onley Office Park, 25 Osier Way, Onley, Buckinghamshire MK46 5FP United Kingdom  
 Telephone: 01234 905100 Fax: 01234 243312  
 Web: www.g2energy.co.uk e-mail: enquiries@g2energy.co.uk

Project Number:	<b>P678</b>
Project Title:	<b>Upper ClayHill Solar Farm</b>
Client(s):	<b>Lightsource Renewable Energy</b>
Project Issue Date:	<b>September 2014</b>
Drawn By:	NJ
Checked By:	EG
Approved By:	CF
<b>Drawing Number:</b>	<b>P678(01)-25-01-O</b>
Drawing Name:	<b>UKPN Containerised Substation Plans and Elevations</b>

Sheet Print Stamp: 12/12/2014 15:55:12

Scale: As indicated Paper Size: A1

Drawing Status :

**FOR APPROVAL**