

# *The best of both worlds*

Combine an idyllic waterside location with the convenience of having one of the UK's most cosmopolitan cities on your doorstep. Trinity Wharf brings affordable, laid back, contemporary living to this extensively redeveloped part of Birmingham.

Located less than five miles from the thriving hub of the second city, close to the picturesque and historical Sarehole Mill, Trinity Wharf comprises of six one-bedroom and eighteen two-bedroom apartments completed to the highest specification with the latest eco-friendly air sourced heat pump, stunning bathrooms and Howden kitchens, making them the perfect base for first-time buyers and young professionals alike.

Trinity Wharf is the perfect location for savvy professionals seeking city-centre style and access without the expense of a B1 postcode.



Computer Generated Artists Impression

# SITE PLAN



- PENWOOD HOUSE
- STRATFORD HOUSE
- LOCKSIDE HOUSE

# PENWOOD HOUSE



GROUND FLOOR



TYPE A1

FIRST FLOOR

TYPE A2



TYPE A1

Living / Kitchen	5.000 x 4.275m	16'4" x 14'0"
Bedroom	3.685 x 3.400m	12'1" x 11'2"
Bathroom	2.125 x 1.913m	6'11" x 6'3"

TYPE A2

Living / Kitchen	5.000 x 4.275m*	16'4" x 14'0"
Bedroom	3.887 x 3.400m	12'9" x 11'2"
Bathroom	2.125 x 1.913m	6'11" x 6'3"

\* Denotes Maximum Room Dimension

## Affordable city centre style

Six modern, self-contained one-bedroom apartments designed with first-time buyers in mind.

Each apartment comprises a bedroom and contemporary white bathroom complete with chrome fittings. An open-plan living area incorporates a high spec Howden kitchen with stylish appliances and attractive colour co-ordinated cabinets and worktops for a modern feel.

Fully double-glazed, the ground floor apartments also benefit from French Doors opening onto a landscaped area.

TYPE B1

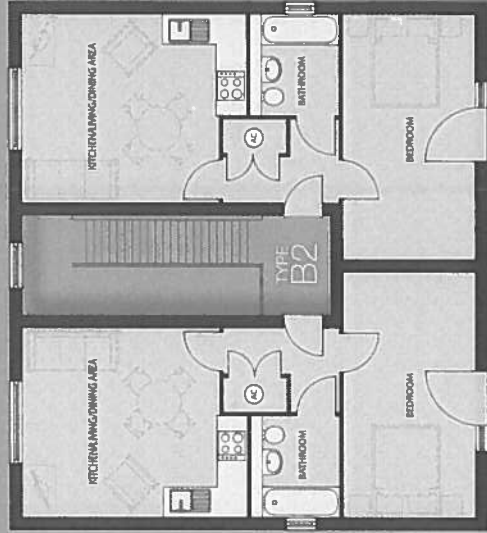
Living / Kitchen	4.800* x 4.000m	15'9" x 13'1"
Bedroom	4.550 x 2.800m	14'11" x 9'2"
Bathroom	2.125 x 1.900m	16'11" x 6'2"

TYPE B2

Living / Kitchen	4.800* x 4.000m	15'9" x 13'1"
Bedroom	5.201 x 2.800m	17'0" x 9'2"
Bathroom	2.125 x 1.900m	16'11" x 6'2"

\* Denotes Maximum Room Dimension

FIRST FLOOR



GROUND FLOOR



Dimensions are approximate only; exclude wall finishes and should not be relied upon for the measurement of flooring and furniture fitting.