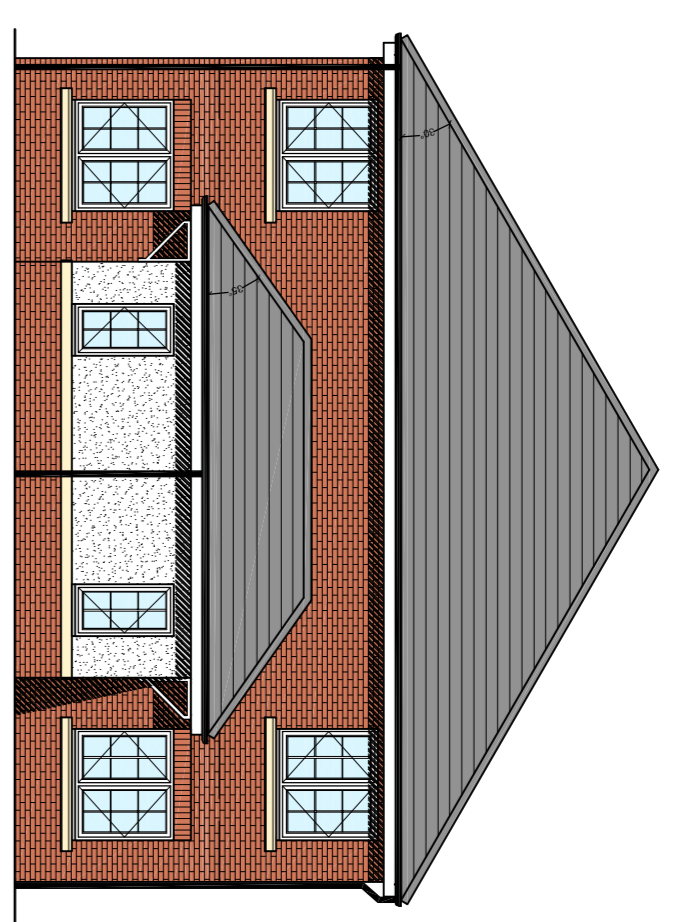
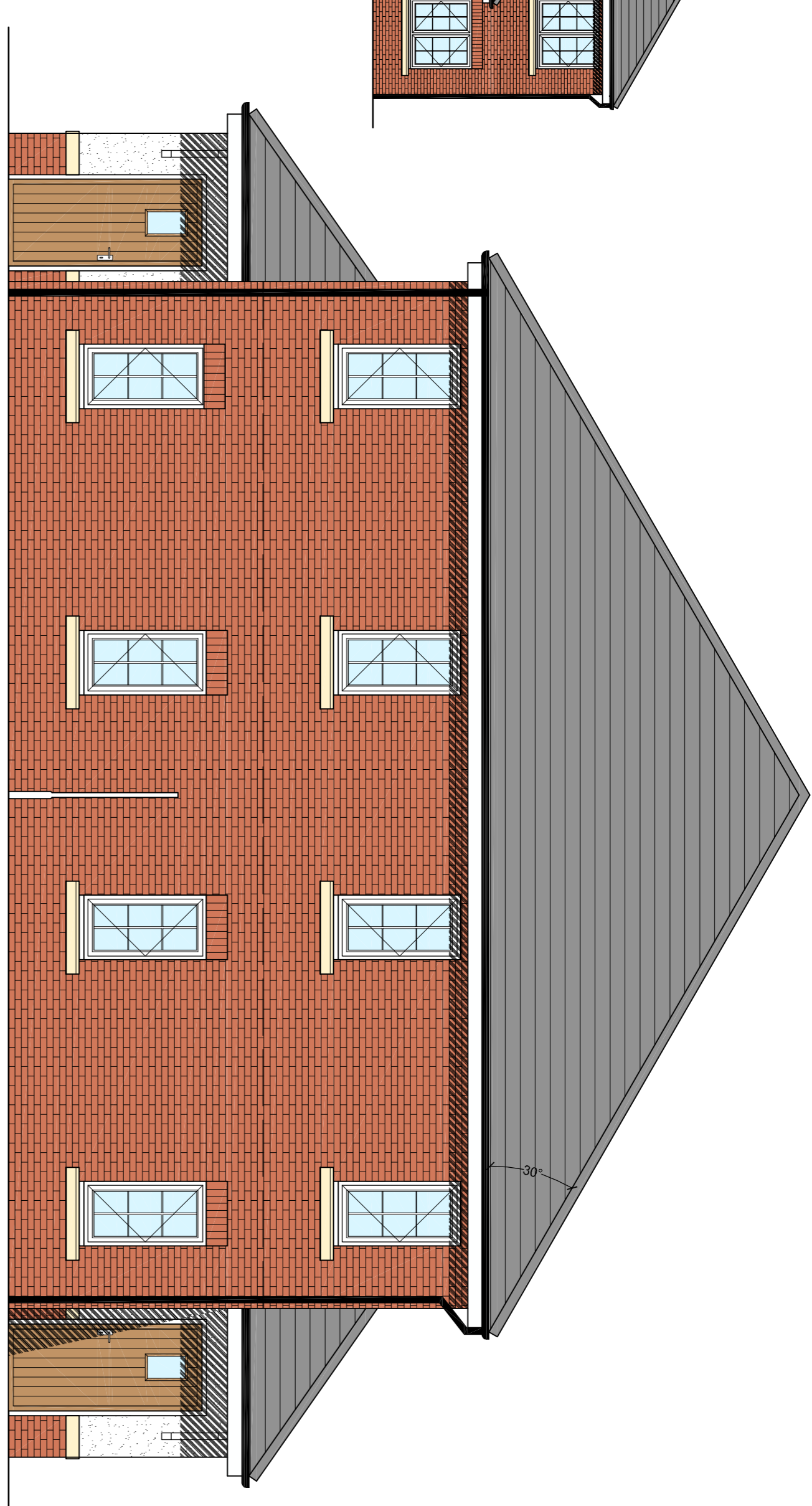


Elevation A
Scale 1:100



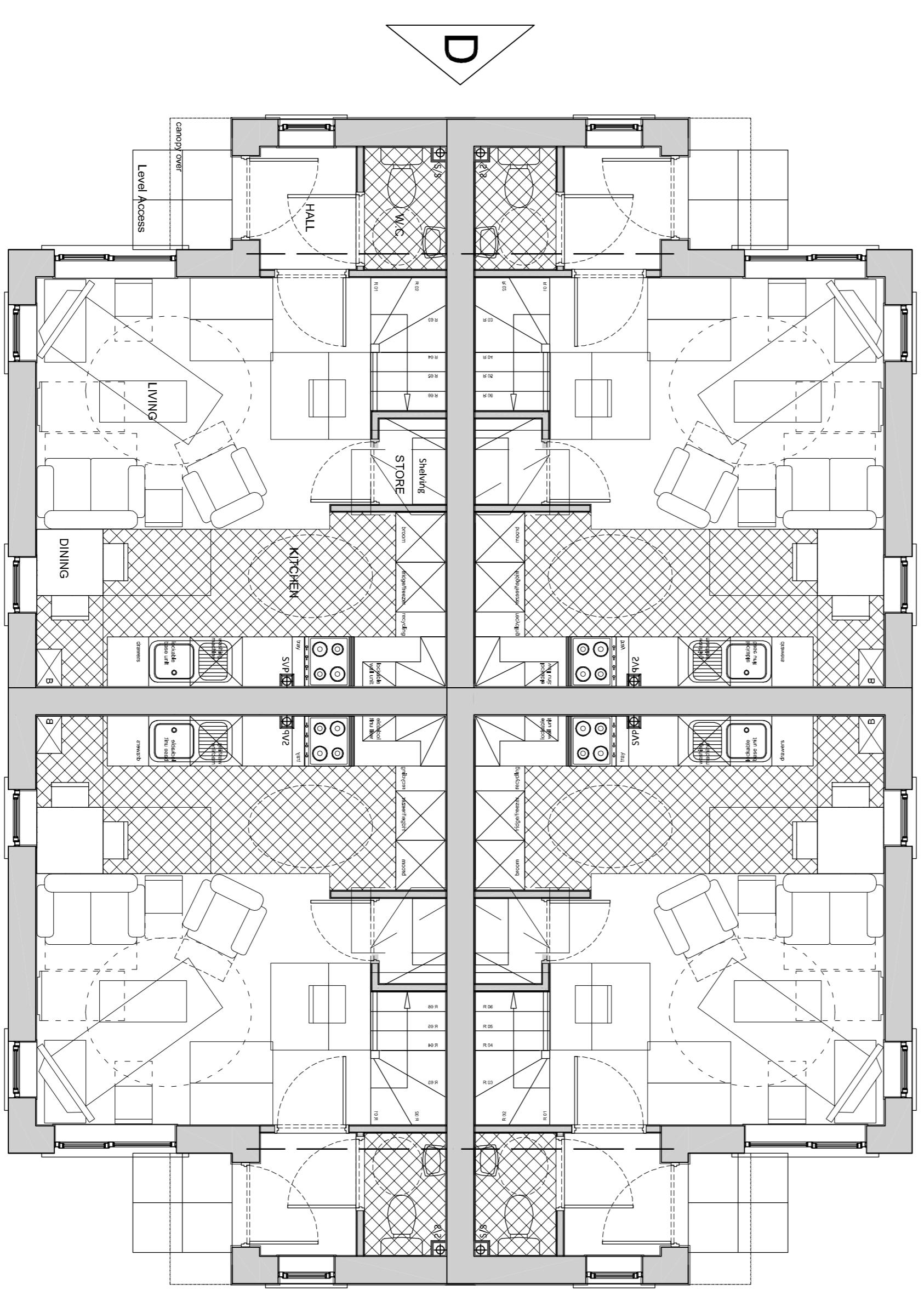
Elevation B



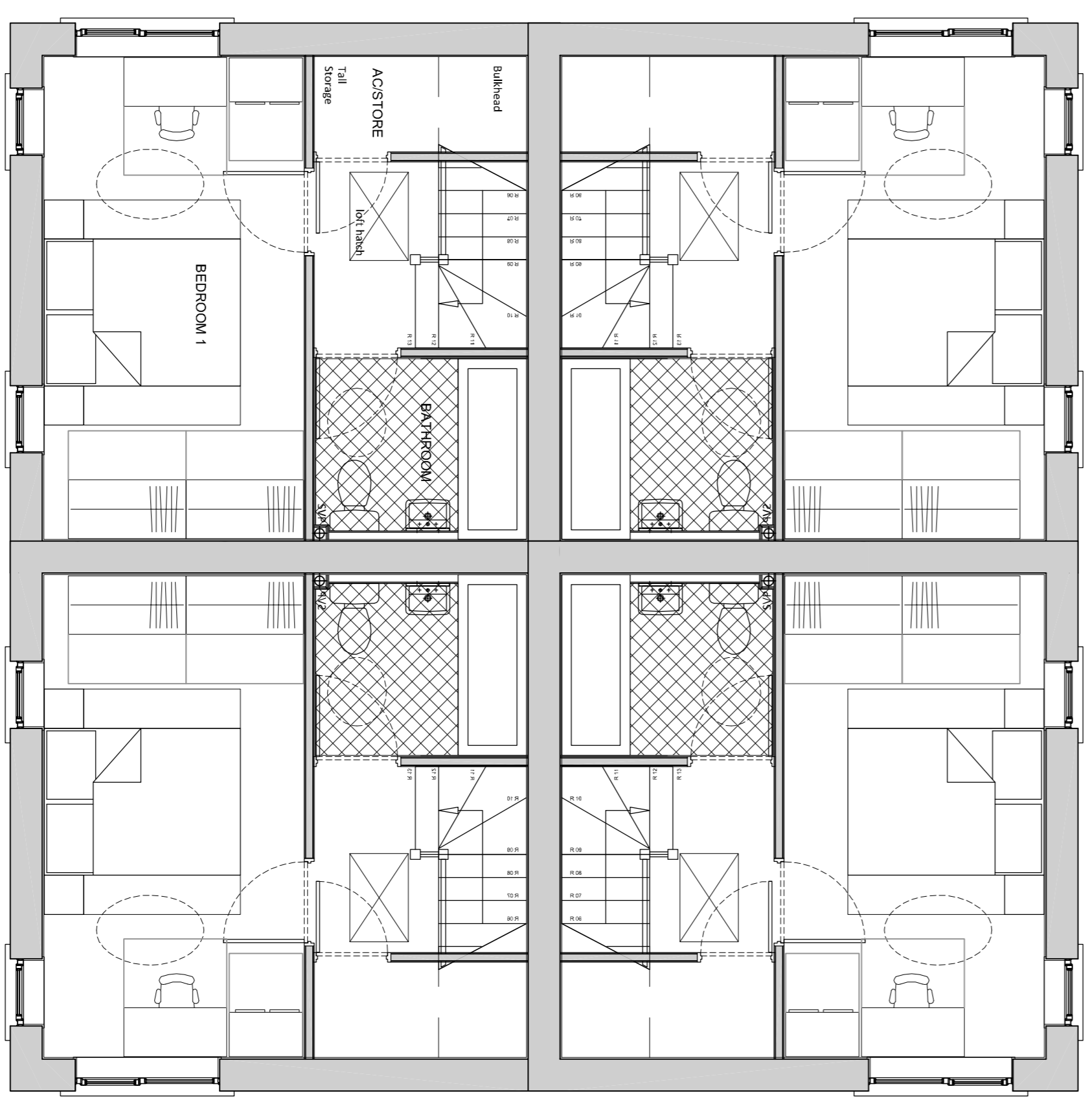
Elevation C



Elevation D



Ground Floor Plan



First Floor Plan

Materials Schedule	
Bricks -	Itstock Hollington Blend
Roof Tiles -	Sandek Calderdale
Dark Grey Concrete Tiles	
Windows and Fascias -	White UPVC

nicol thomas

Revision	Date	Details

nicol thomas
architects project managers construction cost consultants CDM co-ordinators
Registered in England and Wales, Reg No: 2140639
Quality Assured to BS EN ISO 9001:1994 Certificate Number 08 4723
Horsley House, Beckwith Lane, Horsley, Royston, Cambs, UK, SG8 5NS
01776 290088 01776 290099 eodham@nicolthomas.com

Also at Birmingham (Registered office)

Do not scale from this drawing. All dimensions must be checked and verified before preparing production drawings or commencing works. This drawing and its design is the copyright of Nicol Thomas Ltd and may not be reproduced in any form whatsoever without their prior express written consent.

Client:	Strategic Team Group		
Job:	Park Road, Telford		
Drawing title:	House Type B - Block 1		
Drawing Number:	M3723	(PL)	11
Scale:	1:50 @ A1		
Date:	August 2014		
Drawn by/ checked by:	RW		