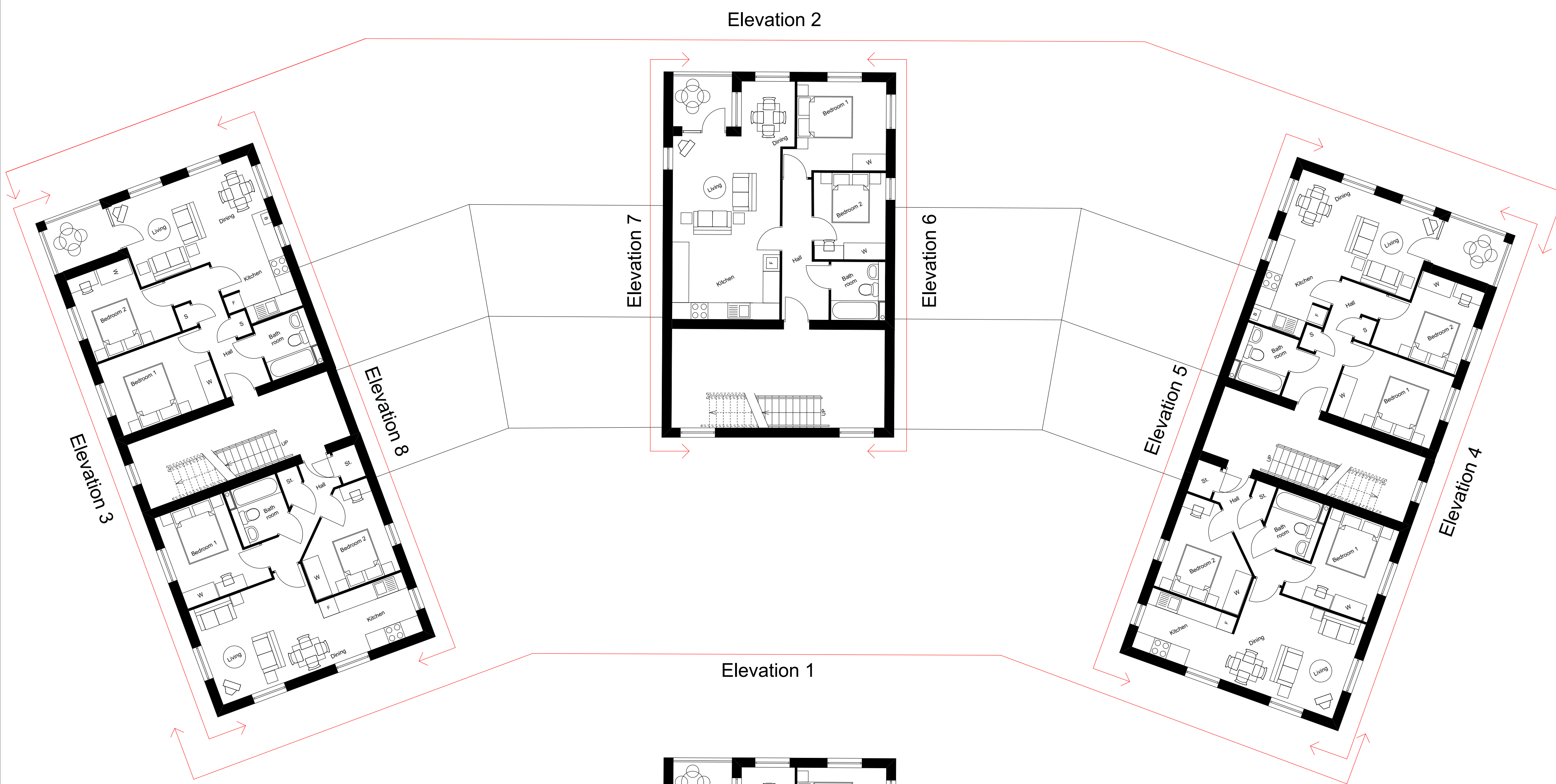
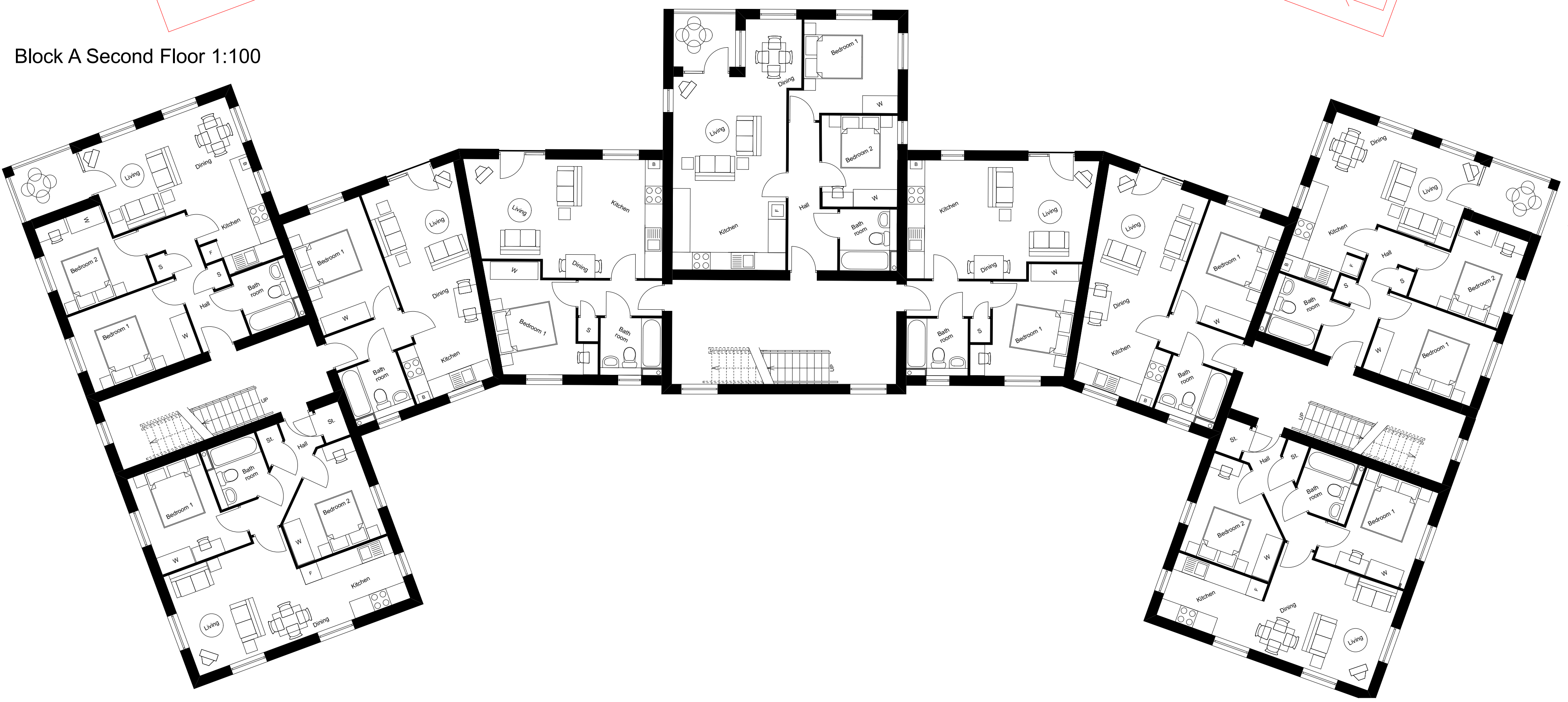


notes:



Block A Second Floor 1:100



Block A First Floor 1:100



Block A Ground Floor 1:100



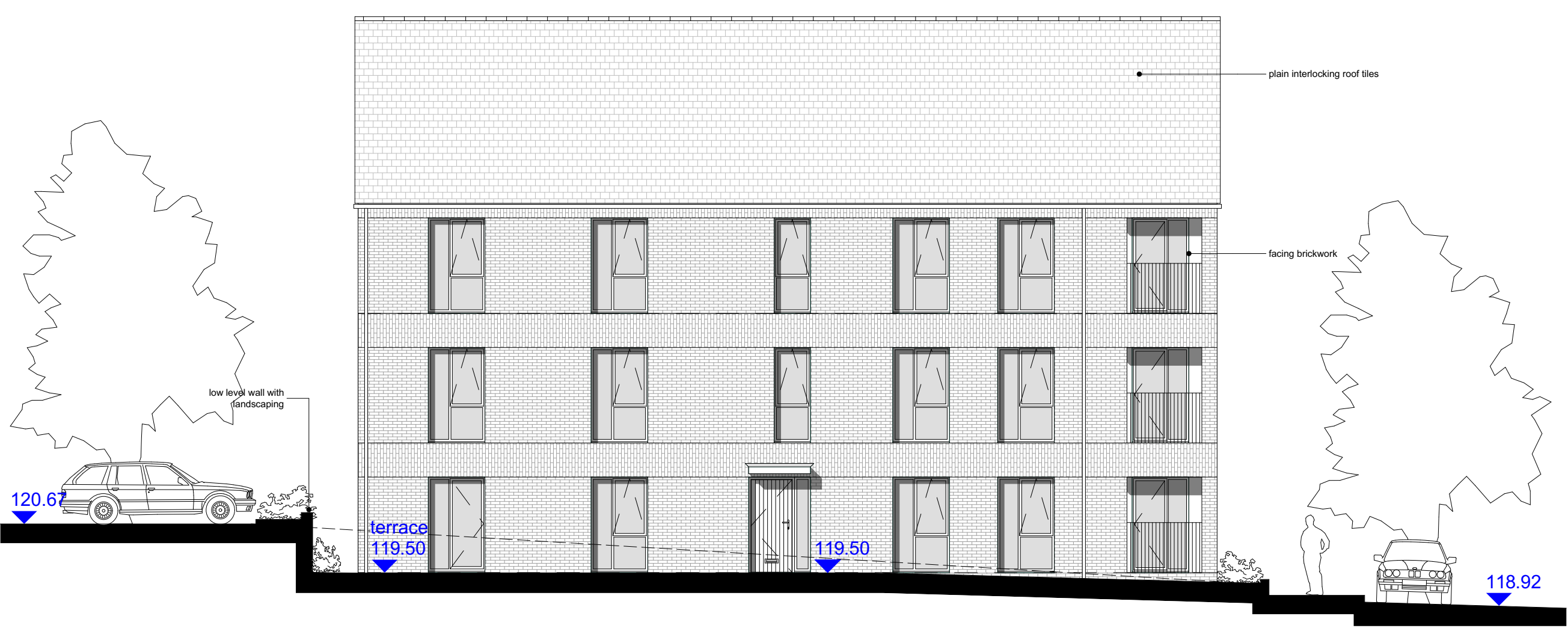
Elevation 1 - Front Elevation 1:100



Elevation 2 - Rear Elevation 1:100



Elevation 3 - Side Elevation 1:100



Elevation 4 - Side Elevation 1:100

D 12 05 15	External finish materials notes added following LPA request.	SKT	SKT
C 29 04 15	Elevations amended as per planning officer's comments.	SKT	SKT
B 24 02 15	Bin store & cycle store hand-draft.	SKT	SKT
A 12 12 14	Elevations revised, elevation key added, window added to ground floor (commented).	JD	check

IDP ARCHITECTS.
 URBAN DESIGNERS.
 PLANNERS.
 PROJECT MANAGERS.
 WE ARE IDP.

status: **CONCEPT** RIBA Stage: **3**

client: Taylor Wimpey Homes

job: TMC Crescent Redesign

title: Block A

drawn: BAR date: 08/09/14

checked: BAR scale @ a0: 1:100

job no: C2076 dtp no: 103D