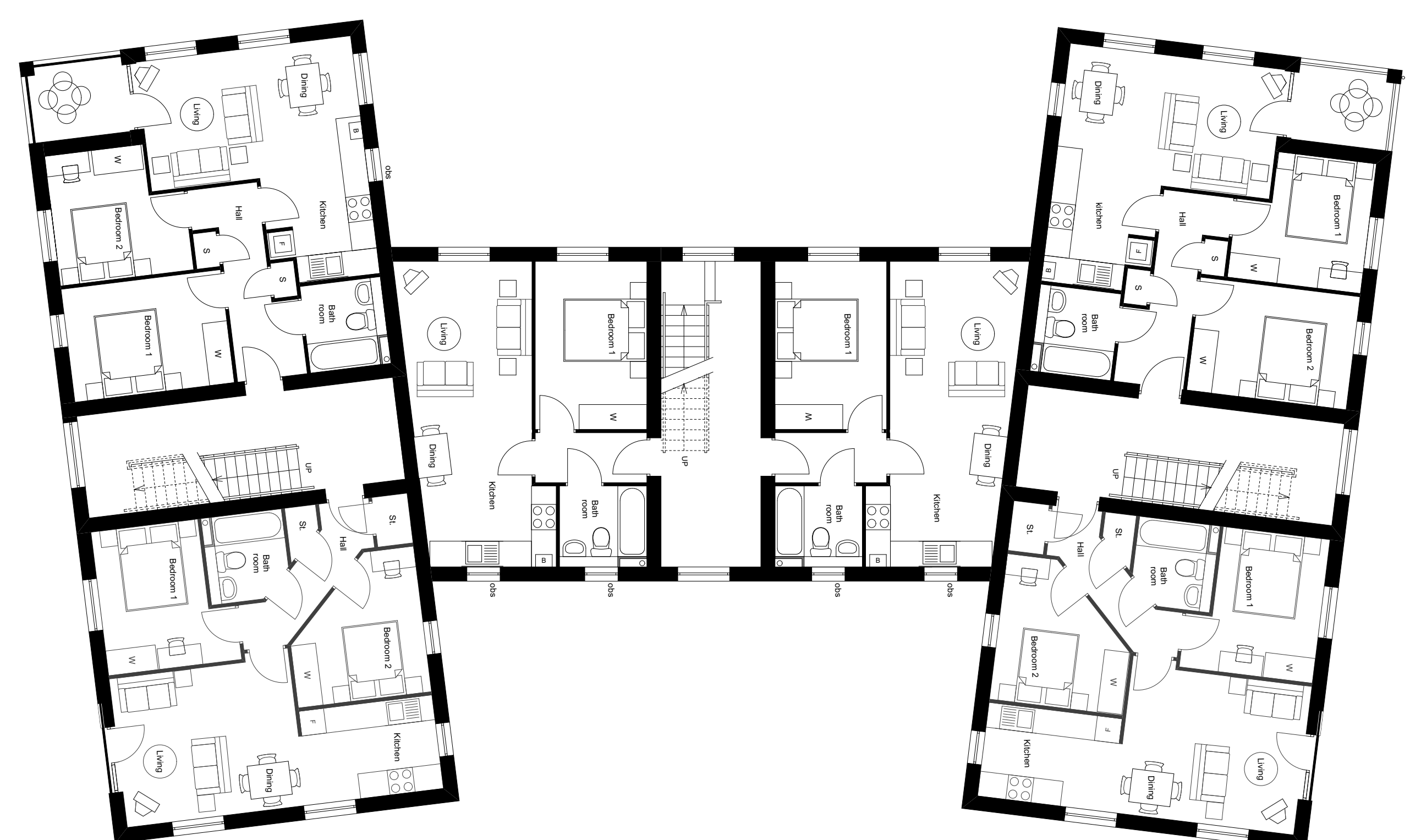


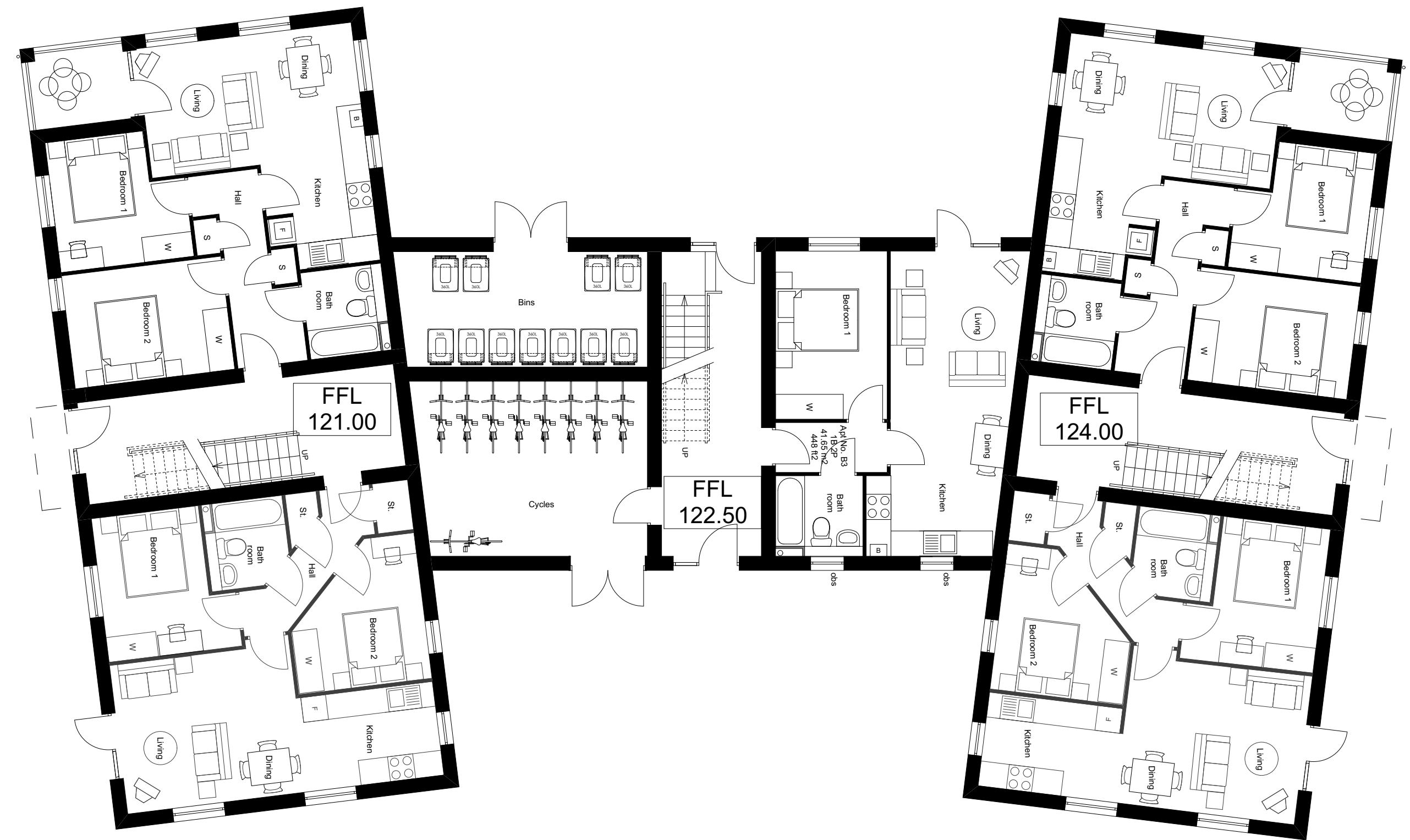
notes:



Block B Second Floor 1:100



Block B First Floor 1:100



Block B Ground Floor 1:100



Elevation 1 - Crescent Elevation 1:100



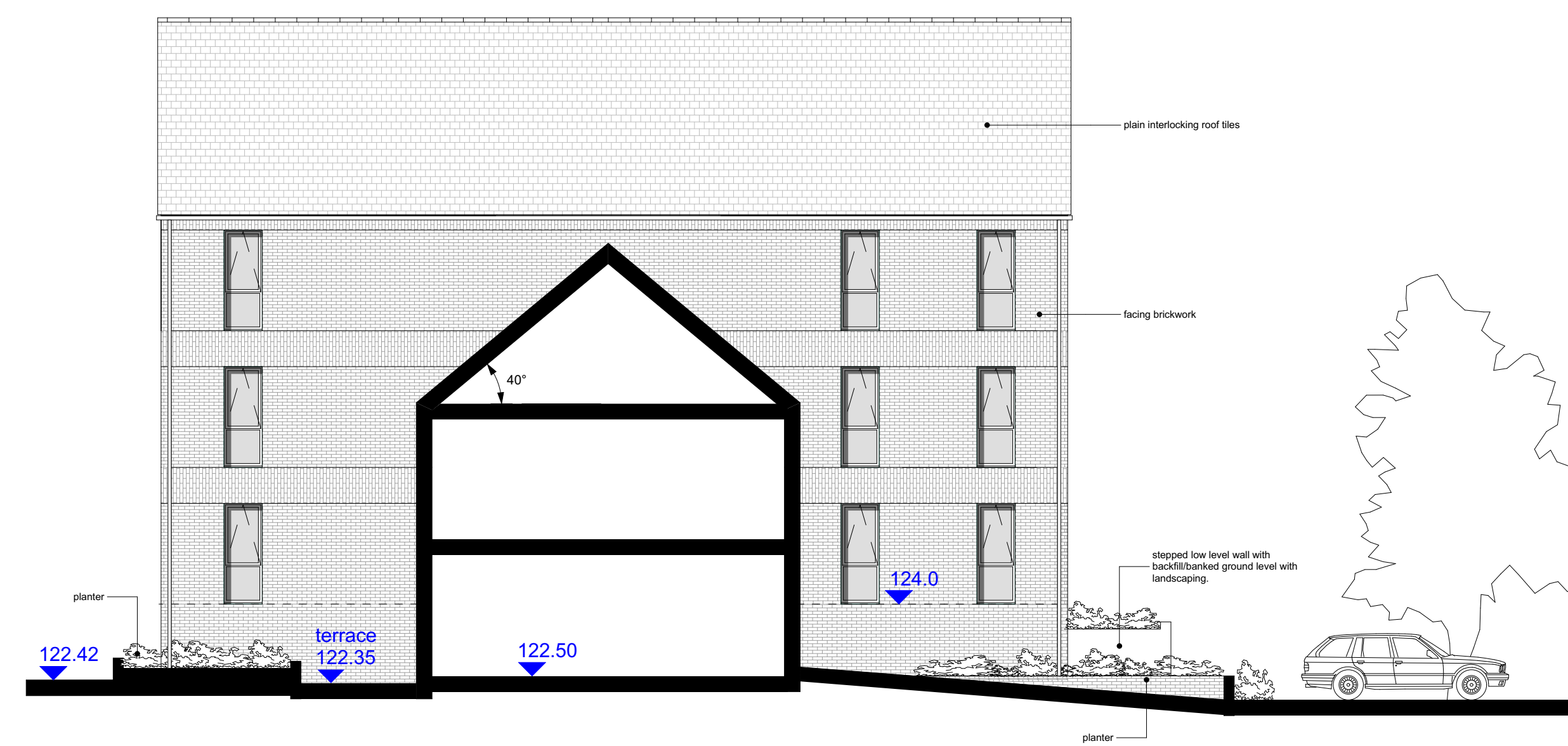
Elevation 2 - Side Elevation 1:100



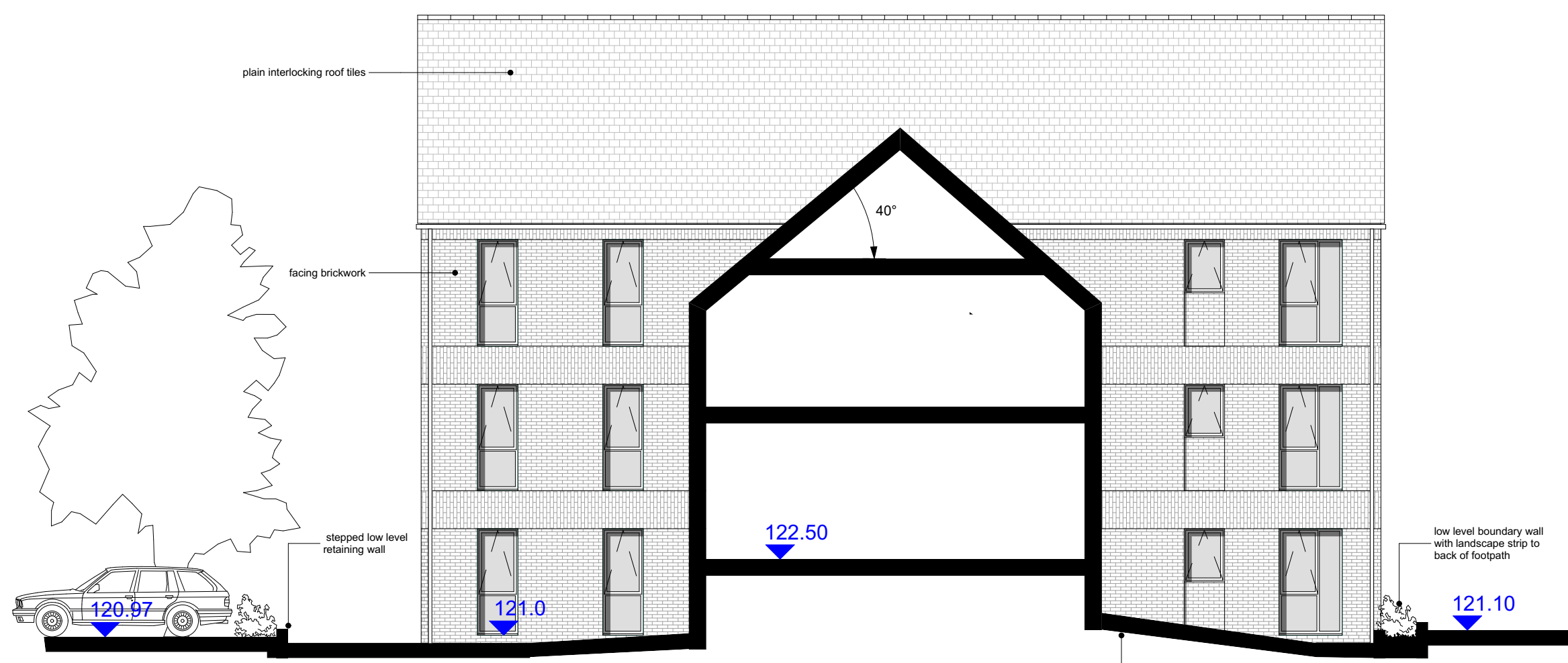
Elevation 3 - Side Elevation 1:100



Elevation 4 - Rear Elevation 1:100



Elevation 5 - Side Elevation 1:100



Elevation 6 - Side Elevation 1:100

E 12 05 15	External finish materials notes added following LPA request.	SKT	SKT
D 29 04 15	Elevations amended as per planning officer's comments.	SKT	SKT
C 24 02 14	Bin store & cycle store handed. Elevations amended to show stepped roof to link blocks & render finish to link block. Sections revised to show 40° roof pitch.	SKT	SKT
B 07 01 14	Elevation reference revised.	AKK	
A 10 12 14	Elevations 5 and 6 added to drawing, elevation key added.	AKK	
rev:	date:	comment(s):	name: check:

IDP ARCHITECTS.
URBAN DESIGNERS.
PLANNERS.
PROJECT MANAGERS.
WE ARE IDP.

status: **CONCEPT** RIBA Stage: **3**

client: Taylor Wimpey Homes

job: TMC Crescent Redesign

title: Block B

drawn: BAR date: 08/09/14

checked: BAR scale @ a0: 1:100

job no: C2076 dfg no: 104E

IDP GROUP 27 SPON STREET COVENTRY CV1 3BA
T: +44 (0)24 7652 7900 E: info@idpgroup.com
www.wearidp.com