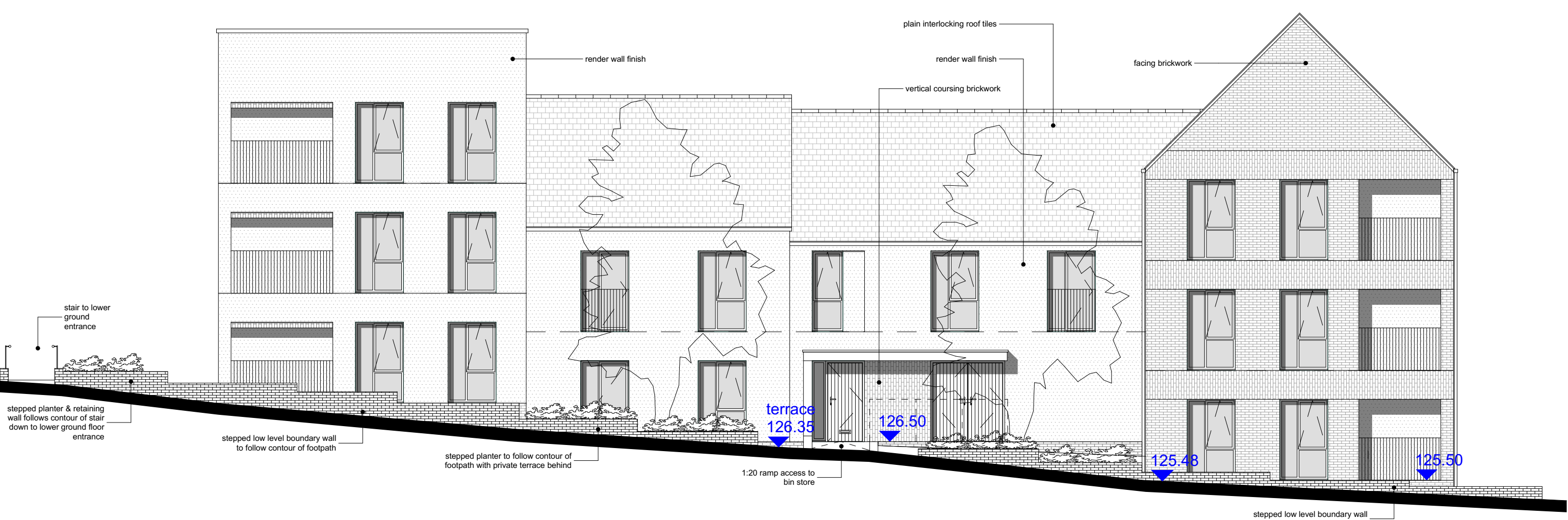


notes:



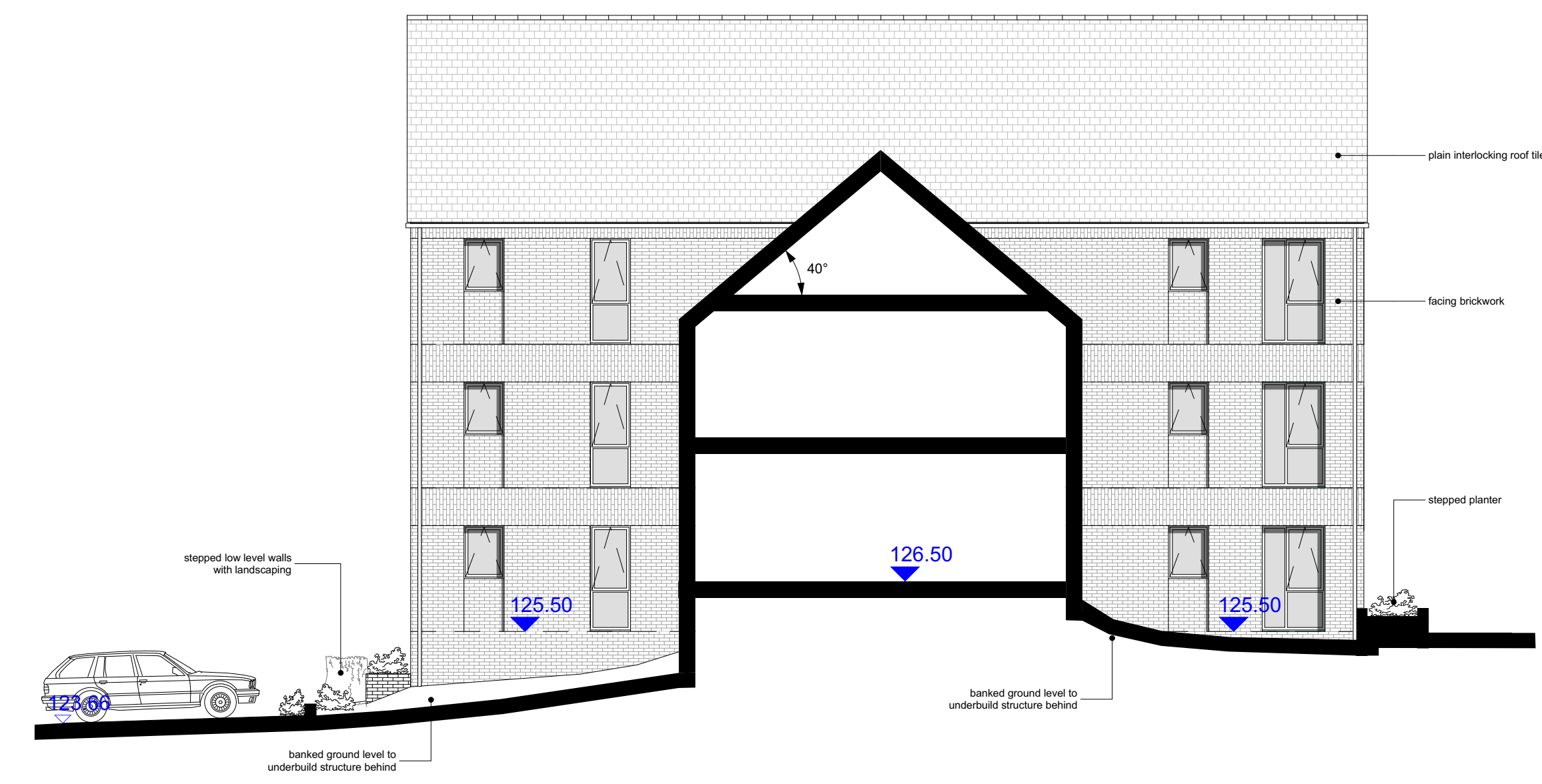
Elevation 1 - Front Elevation 1:100



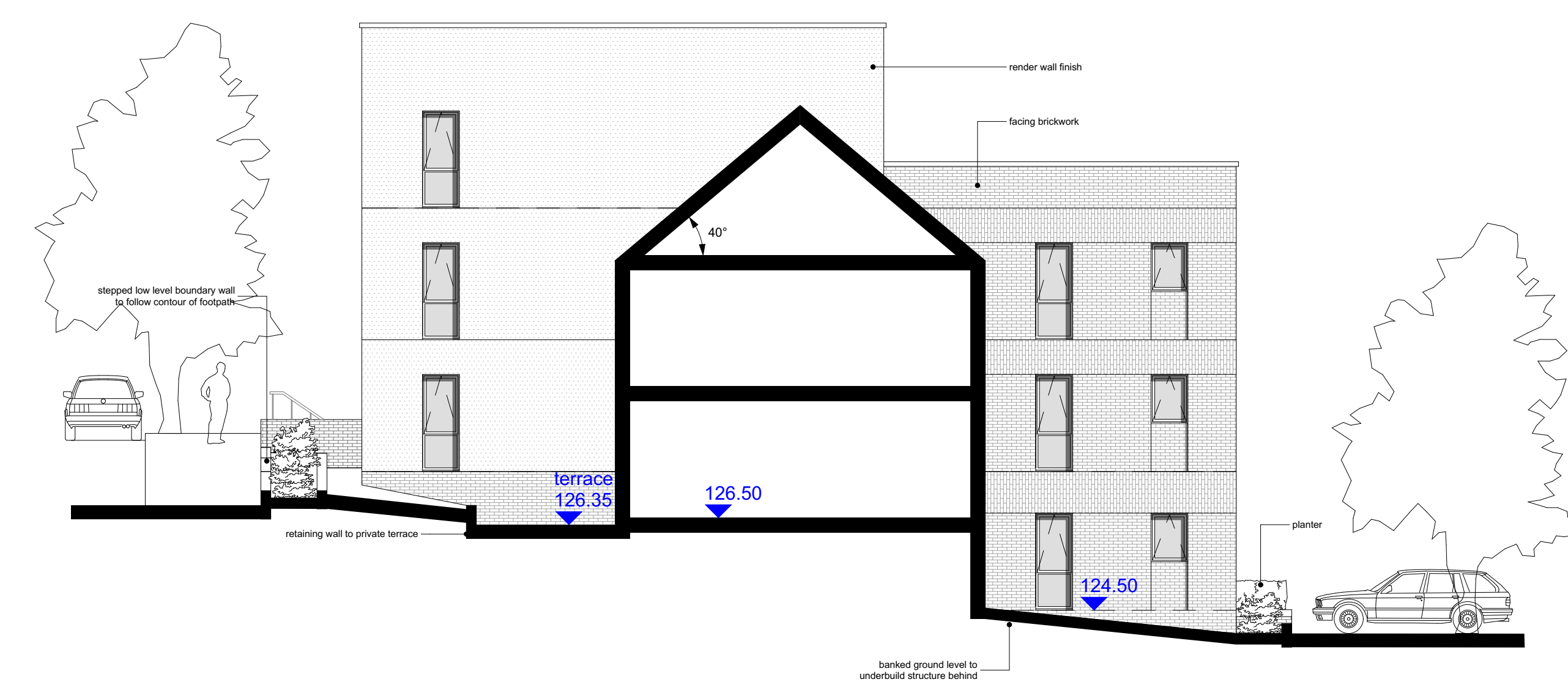
Elevation 2 - Rear Elevation 1:100



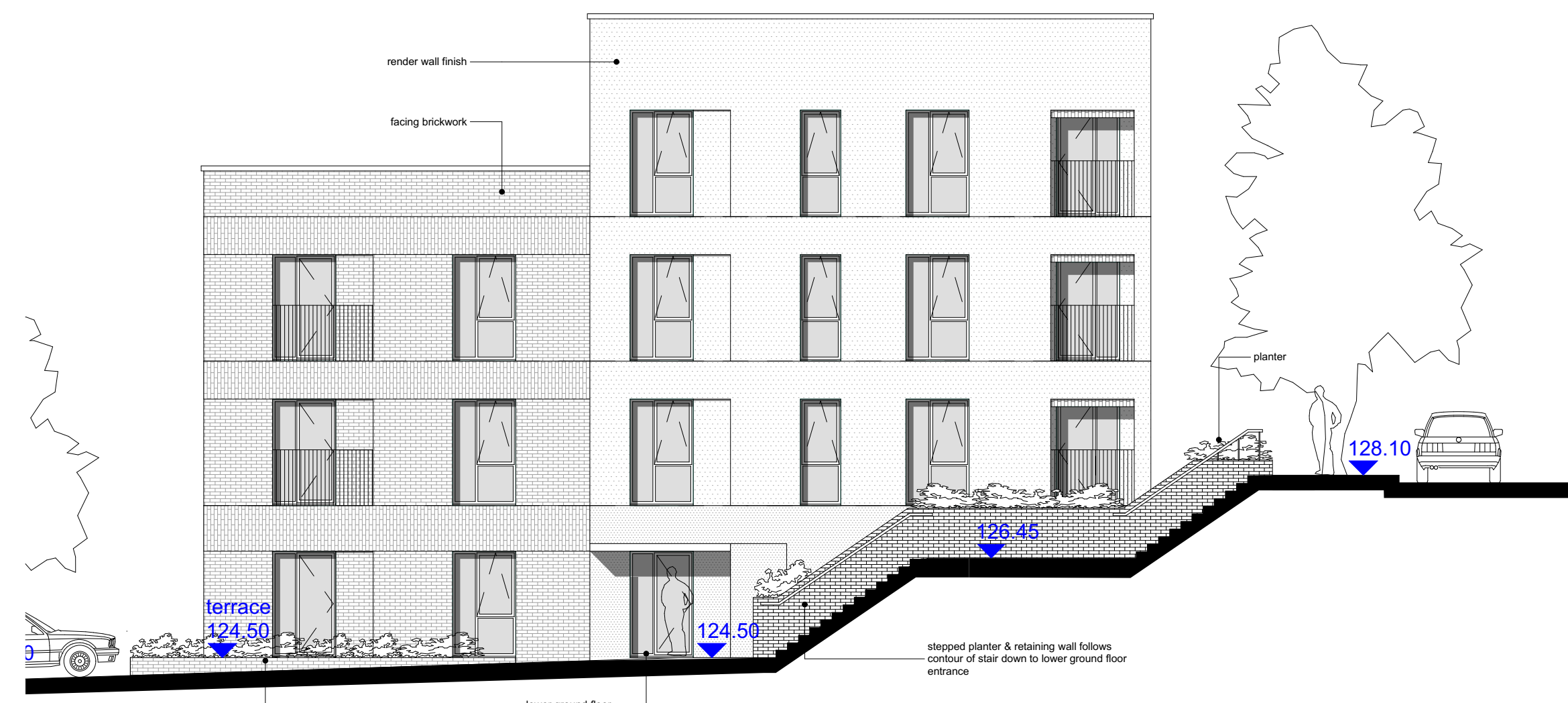
Elevation 3 - Side Elevation 1:100



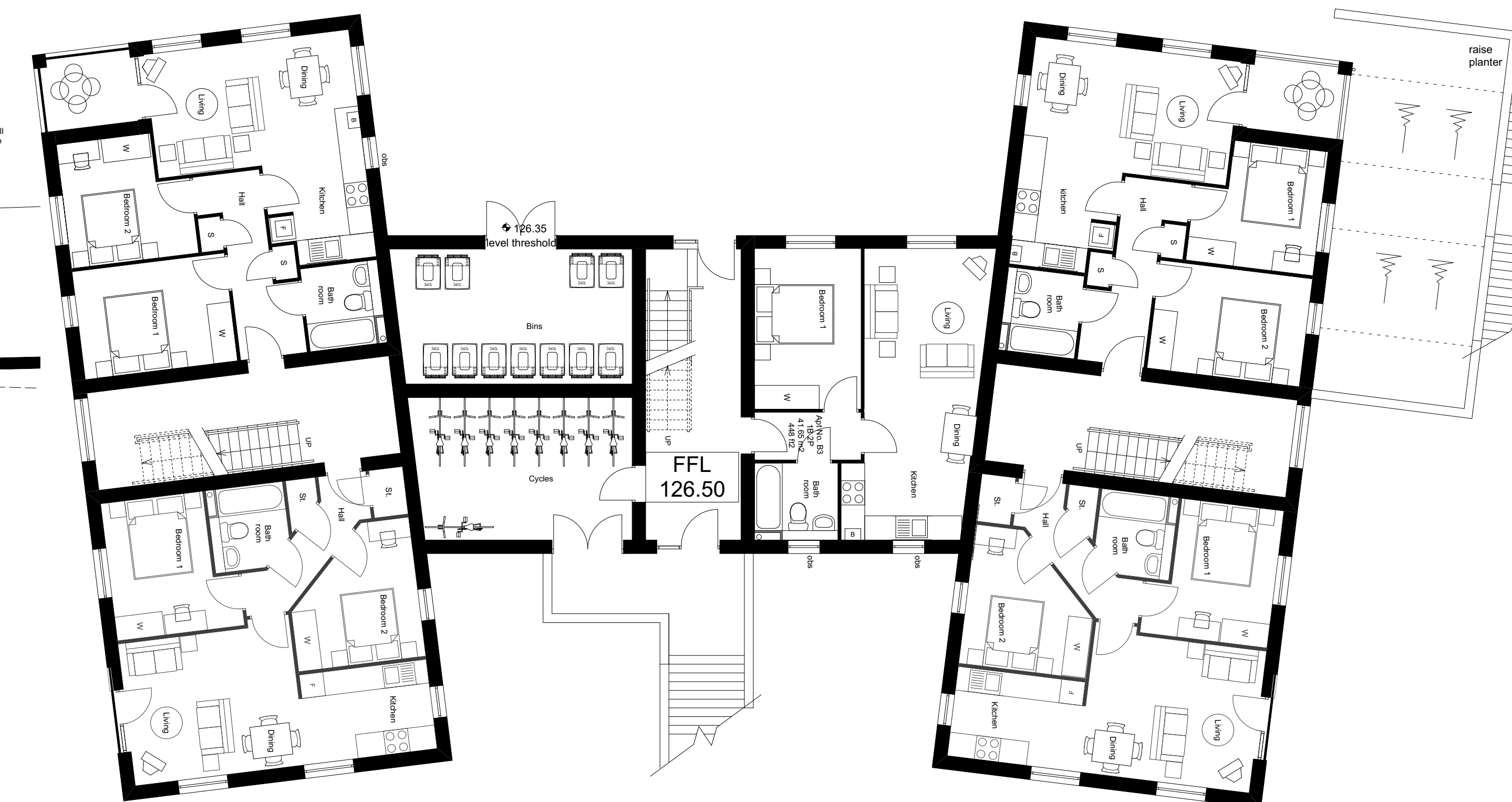
Elevation 4 - Side Elevation 1:100



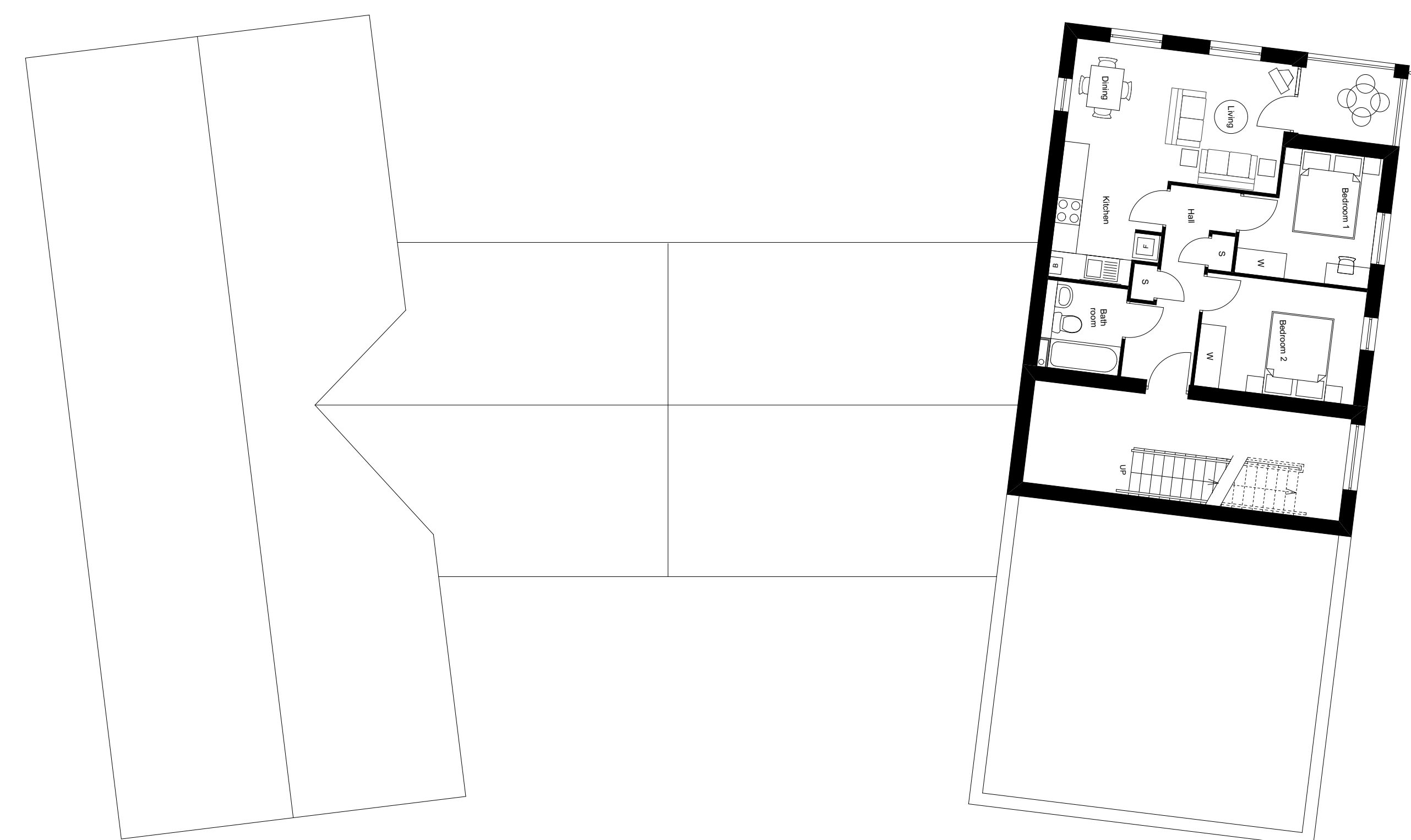
Elevation 5 - Side Elevation 1:100



Elevation 6 - Side Elevation 1:100



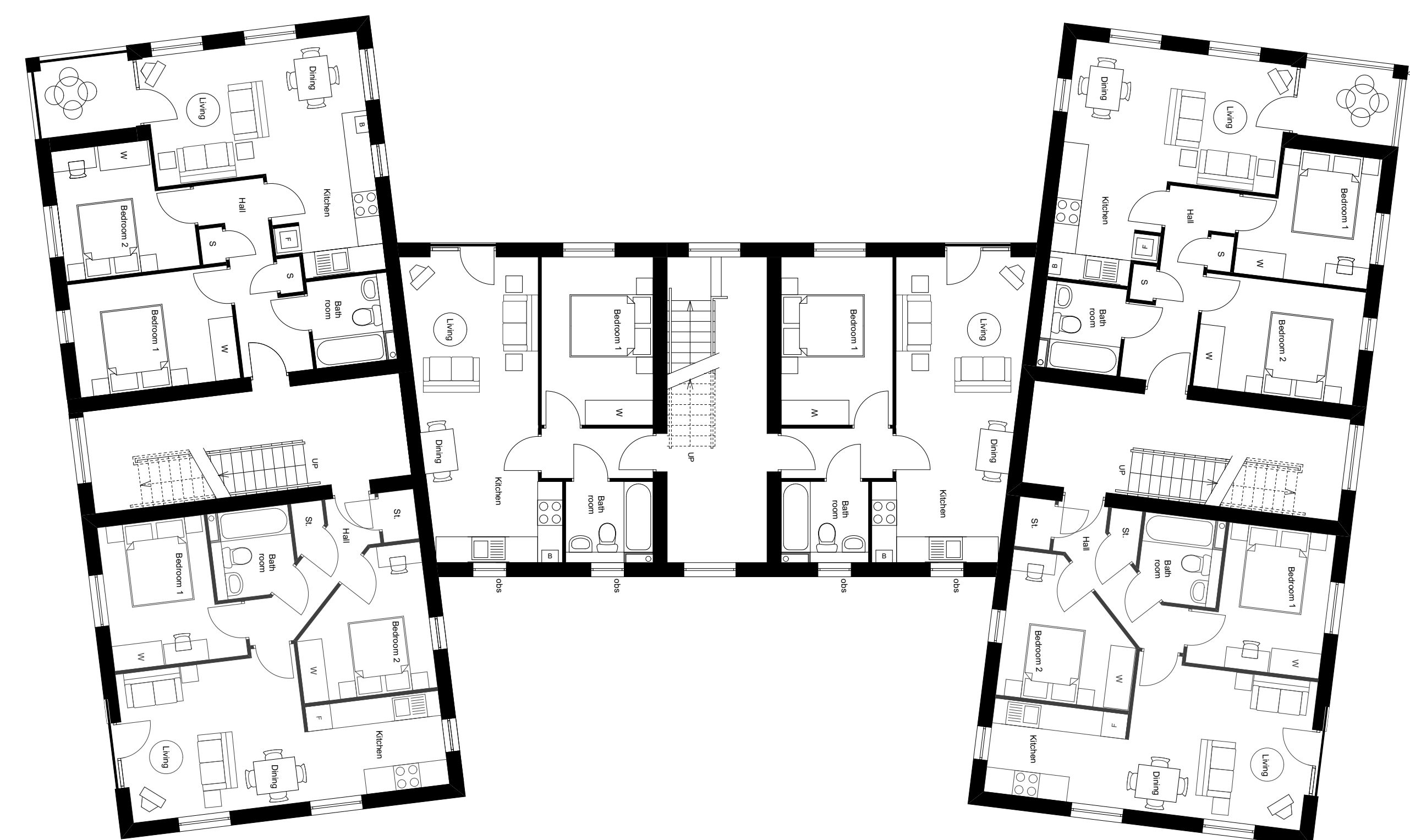
Block C First Floor 1:100



Block C Third Floor 1:100



Block C Ground Floor 1:100



Block C Second Floor 1:100

D 12 05 15	External finish materials notes added following SKT SKT UPA request.
C 29 04 15	Elevations amended as per planning officer's SKT SKT comments.
B 24 02 14	Floor plans amended to show level threshold & SKT retaining structures to ground floor. Elevations amended to show stepped roof to six blocks. Sections revised to show 40° roof pitch.
A 12 12 14	Elevations 4 and 5 added to drawing. elevation key added.
rev. date:	comment:
name:	check:

IDP ARCHITECTS.
 URBAN DESIGNERS.
 PLANNERS.
 PROJECT MANAGERS.
 WE ARE IDP.

status: **CONCEPT** RIBA Stage: **3**
 client: Taylor Wimpey Homes
 job: TMC Crescent Redesign
 title: Block C
 drawn: BAR date: 08/09/14
 checked: BAR scale @ a0: 1:100
 job no: C2076 dfg no: 105D
 IDP GROUP 27 SPON STREET COVENTRY CV1 3BA
 T: +44 (0)24 7652 7600 E: info@idpgroup.com
 www.wearidp.com