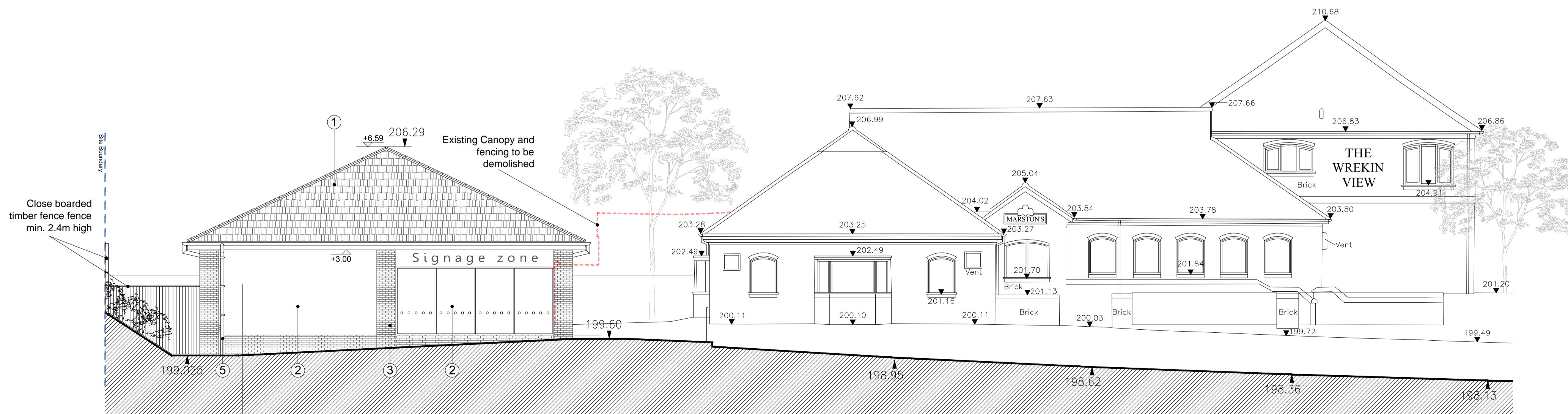
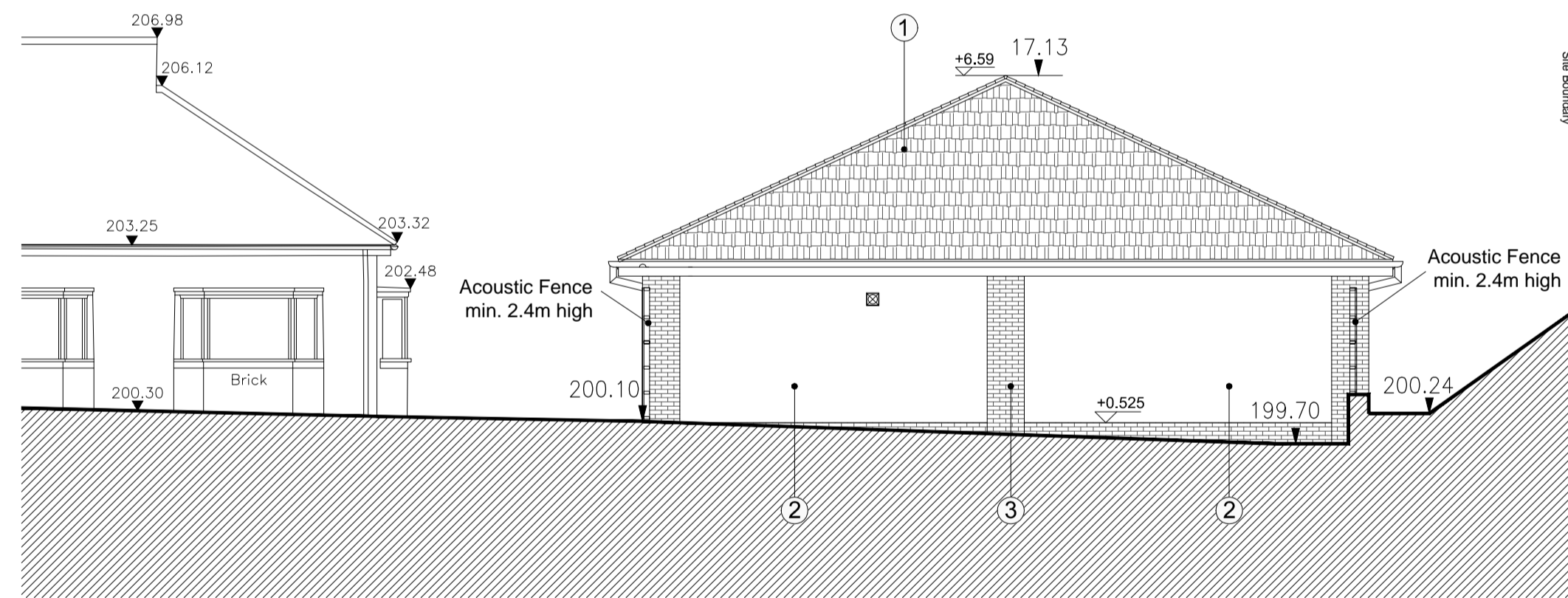
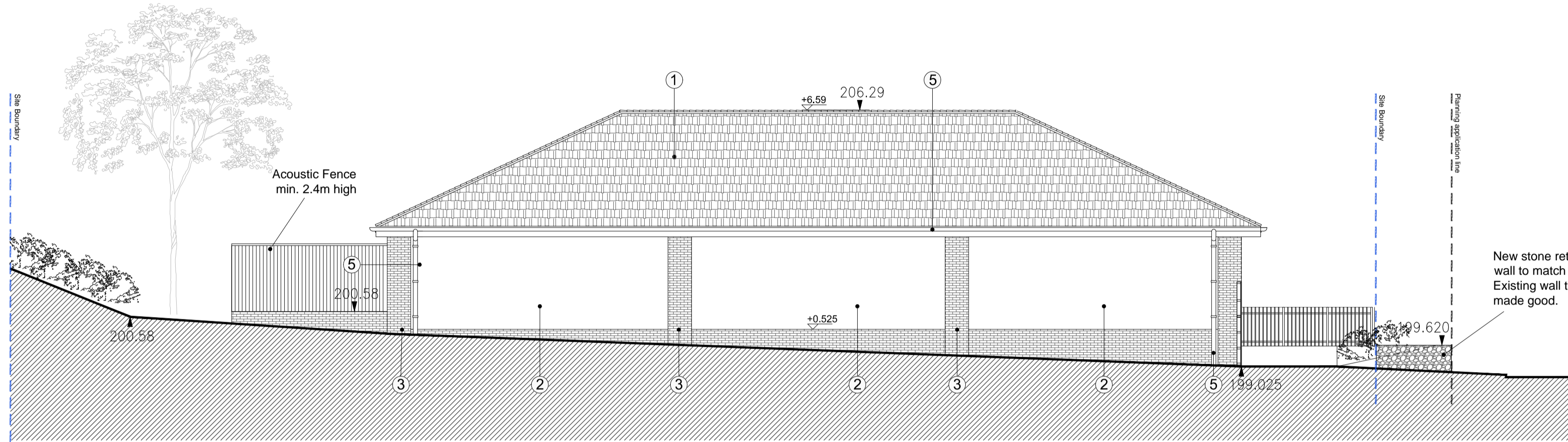


West Elevation

- ① interlocking concrete tiles- colour dark grey.
- ② smooth self-coloured render- colour off-white.
- ③ facing brickwork to suit local character.
- ④ clear glazed aluminium shop front- colour dark grey (RAL 7043).
- ⑤ gutters & downpipes - aluminium - black
- ⑥ steel doorset- colour dark grey (RAL 7043).
- ⑦ Signage indicative. Signage details subject to separate application. Background colour to tenant corporate guidelines.
- ⑧ ATM and backing panel (by tenant).
- ⑨ Extent of external security shutter. Polyester powder coated (RAL 7043)



REVISION	DATE	NOTES	CHK
FOR PLANNING			
Client			
NEW RIVER RETAIL LTD.			
Project			
PROPOSED RETAIL STORE			
THE WREKIN VIEW, LAWLEY BANK,			
MILNERS LANE, TELFORD, TF4 2JH			
Drawing Title			
PROPOSED ELEVATIONS			
Drawn	Checked	Paper Size	Scale
EN	PH	A1	1:100
Date		03.11.2014	
Project No.	Drawing No.	Revision	
131106	RF58-0305	-	

FOR PLANNING

Client
NEW RIVER RETAIL LTD.

Project
PROPOSED RETAIL STORE
THE WREKIN VIEW, LAWLEY BANK,
MILNERS LANE, TELFORD, TF4 2JH

Drawing Title
PROPOSED ELEVATIONS

REVISION	DATE	NOTES	CHK
FOR PLANNING			
Client			
NEW RIVER RETAIL LTD.			
Project			
PROPOSED RETAIL STORE			
THE WREKIN VIEW, LAWLEY BANK,			
MILNERS LANE, TELFORD, TF4 2JH			
Drawing Title			
PROPOSED ELEVATIONS			
Drawn	Checked	Paper Size	Scale
EN	PH	A1	1:100
Date		03.11.2014	
Project No.	Drawing No.	Revision	
131106	RF58-0305	-	

CORSTORPHINE + WRIGHT