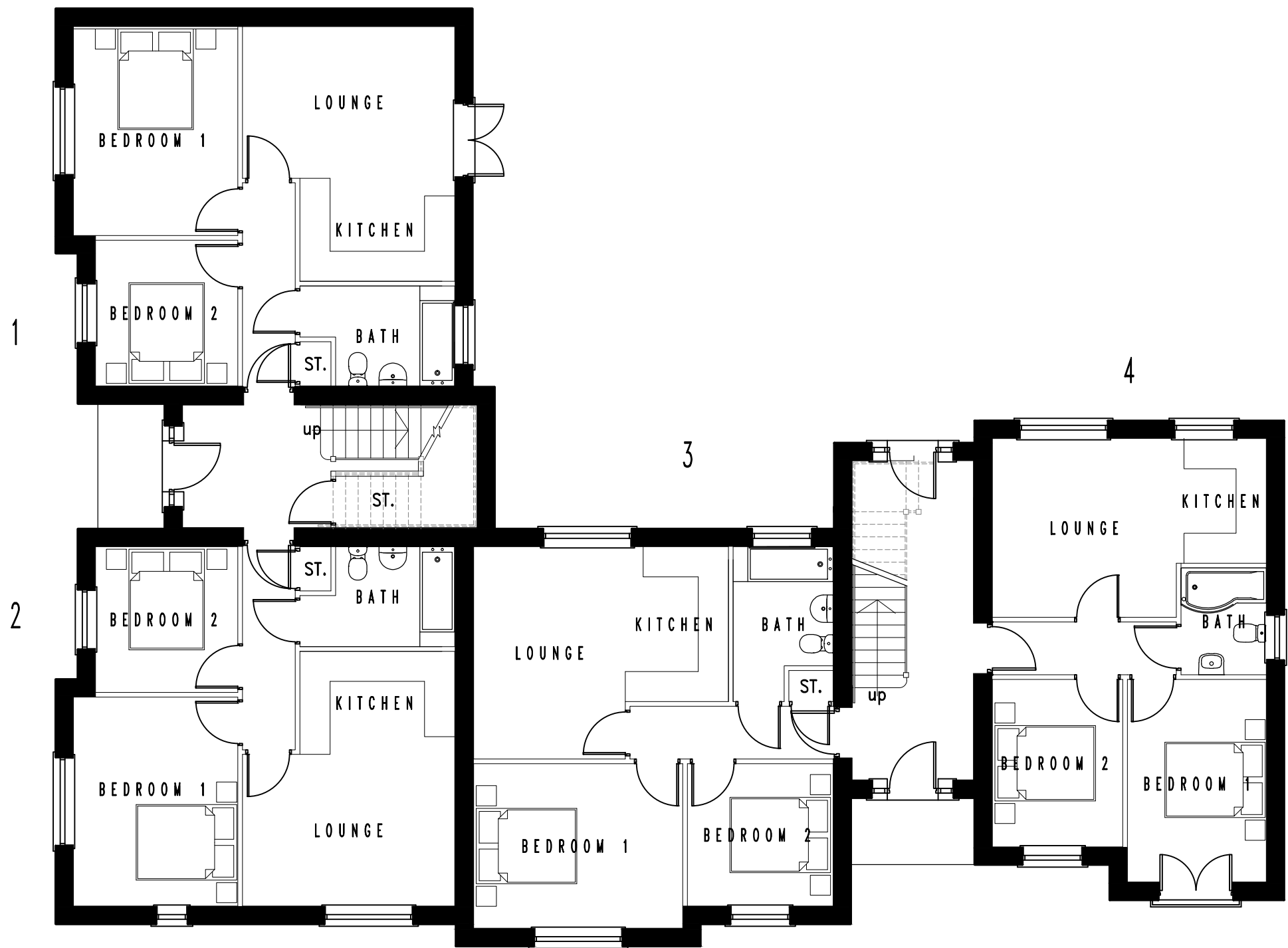


PLOTS 1, 2 & 3.
53M²/
569FT²

PLOT 4.
46M²/
494FT²



GROUND FLOOR LAYOUT

Rev A 17.05.16 - standard 630mm window added to bed 1 of plot 2 in lieu of dummy window.

Job: MOSS ROAD, TELFORD

Title: PLOTS 1-8 - GROUND FLOOR PLAN

Date: OCT 15

Drawing No: 291-01-10

Scale: 1:100

Revision: A

