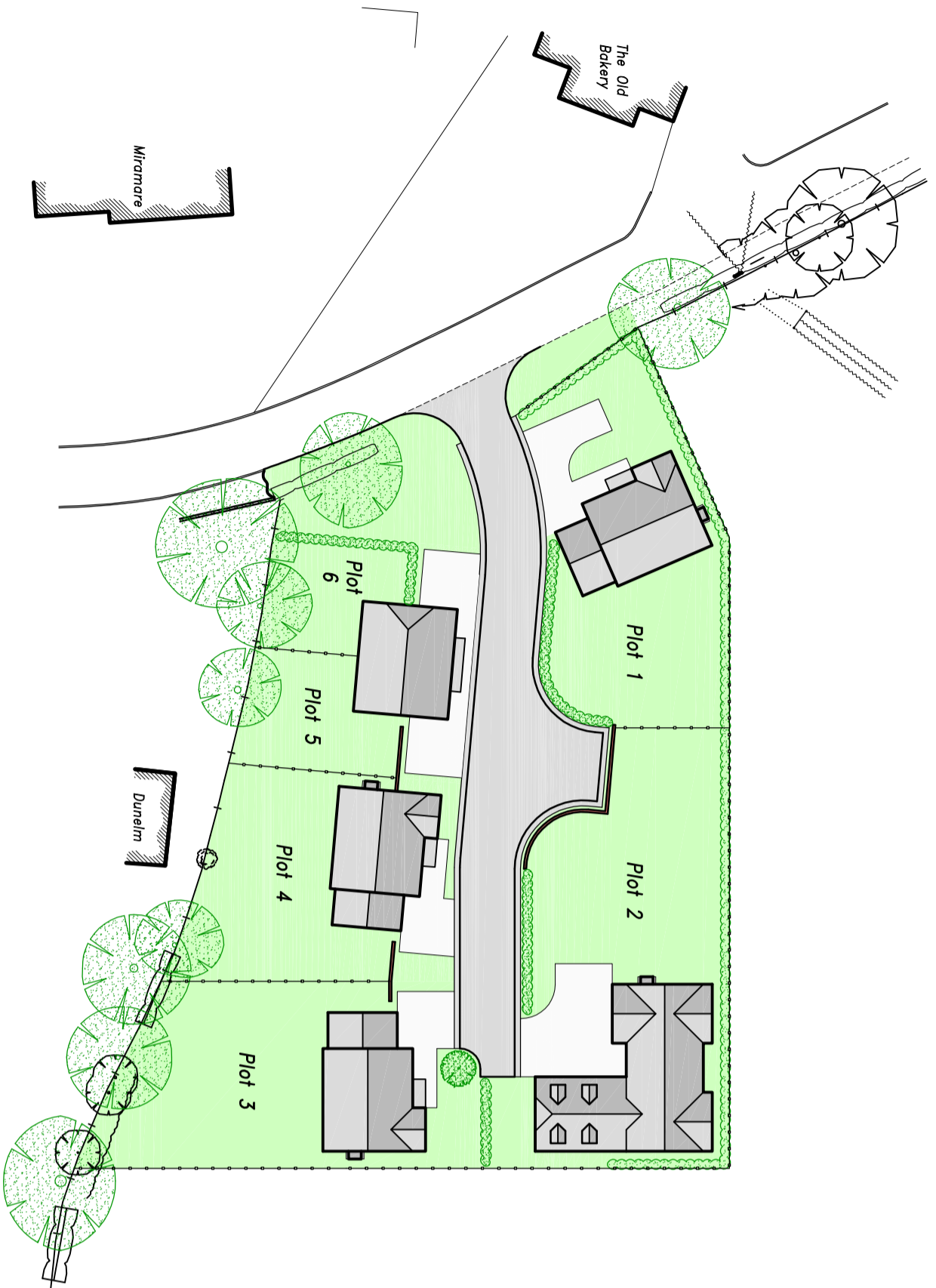


© This drawing and the works shown are the copyright of P J Barnett Associates and may not be reproduced except by written permission.

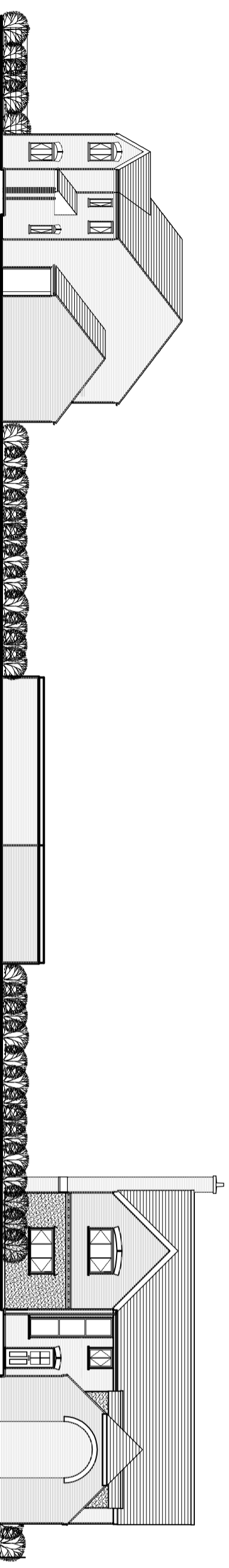
General Notes:

This drawing to be read in conjunction with all relevant P J Barnett Associates drawings
All details and dimensions are to be confirmed on site, prior to works commencing or any ordering of materials

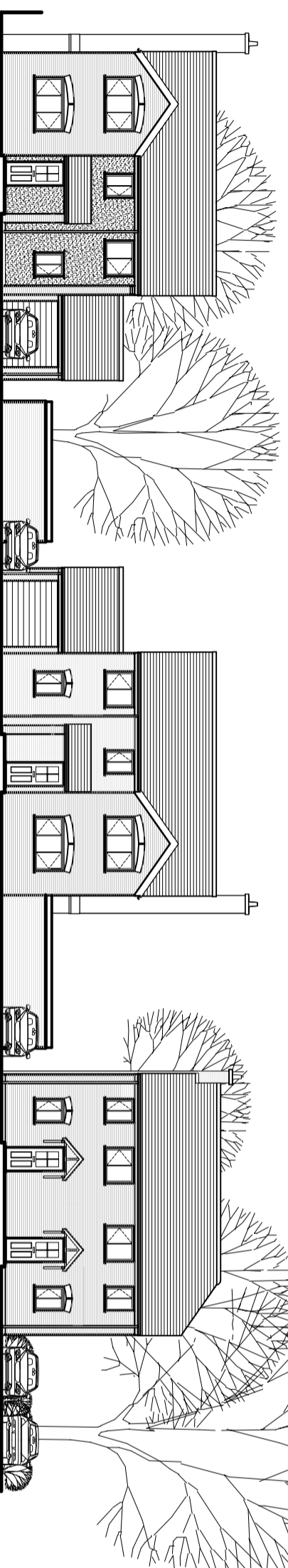
Do not scale off this drawing – use figured dimensions only if in doubt – ask !!



Proposed Site Plan



Plot 1 – FFL 59.500
North Facing Street Scene 1:200



Plot 3 – FFL 59.500
Plot 4 – FFL 59.500
Plot 5 – FFL 59.500 – Plot 6
Affordable Housing Plots – Floor Area 67m²
South Facing Street Scene 1:200

Rev D. Plot 6 roof layout amended 22.01.16 SRB
 Rev C. Site layout amended 05.01.16 SRB
 Rev B. Site layout amended 26.11.15 SRB
 Rev A. Plot 2 amended to house type alterations 17.07.15 SRB



P. J. Barnett Associates
 Consulting Engineers
 Waterloo House
 92 - 94 Chapel Ash
 Wolverhampton WV3 0TY
 Tel: 01902 427297
 Fax: 01902 712123
 E-mail: pjb@pjb.co.uk

Job Title
Proposed Residential Development
"Barley Fields"
Rodington Heath SY4 4QX

Dwg. Title
Proposed Site Plan & Street Scenes

Scale	1:500 @ A2	Dwg. No.	44171/12d
Date	March 2015		
Drawn	S.R.Ball		
Checked			