

© This drawing and the works shown are the copyright of P J Barnett Associates and may not be reproduced except by written permission.

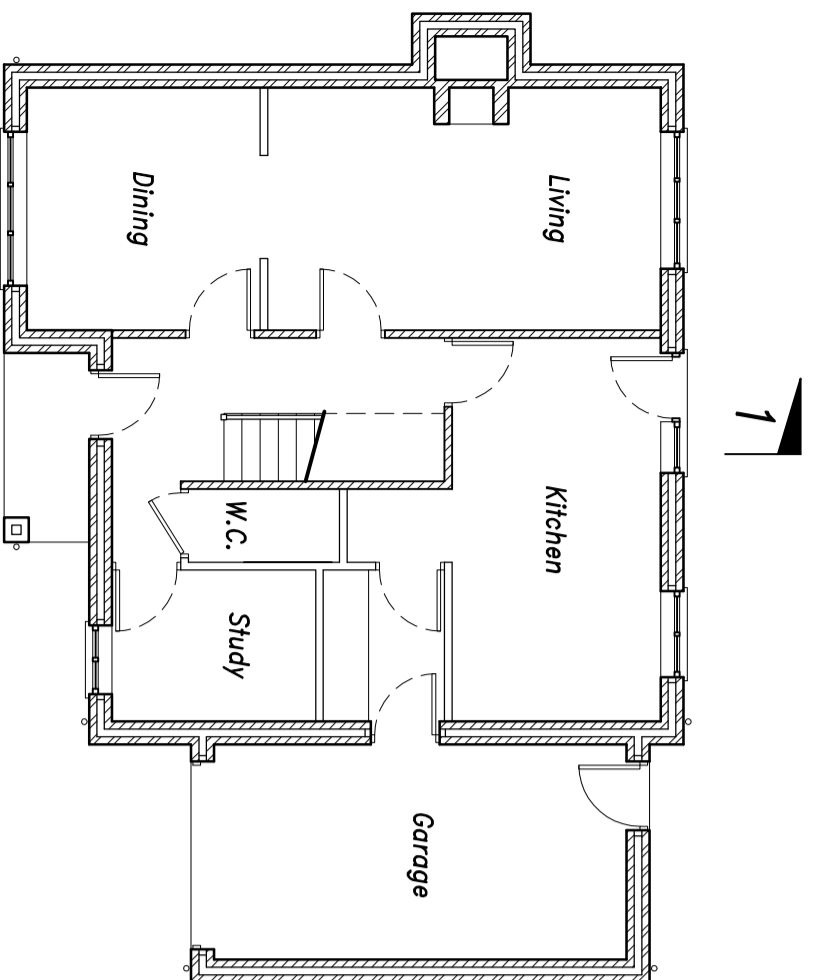
General Notes:

This drawing to be read in conjunction with all relevant P J Barnett Associates drawings
 All details and dimensions are to be confirmed on site, prior to works commencing or any ordering of materials

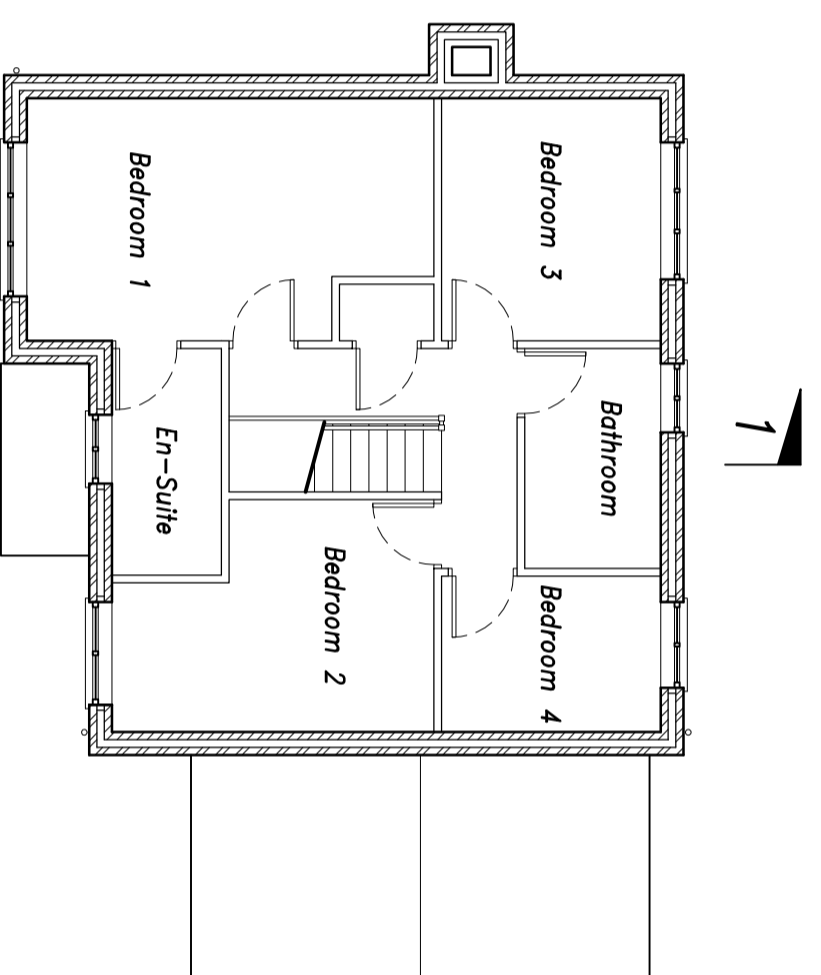
Do not scale off this drawing – use figured dimensions only ! if in doubt – ask !!

Materials:

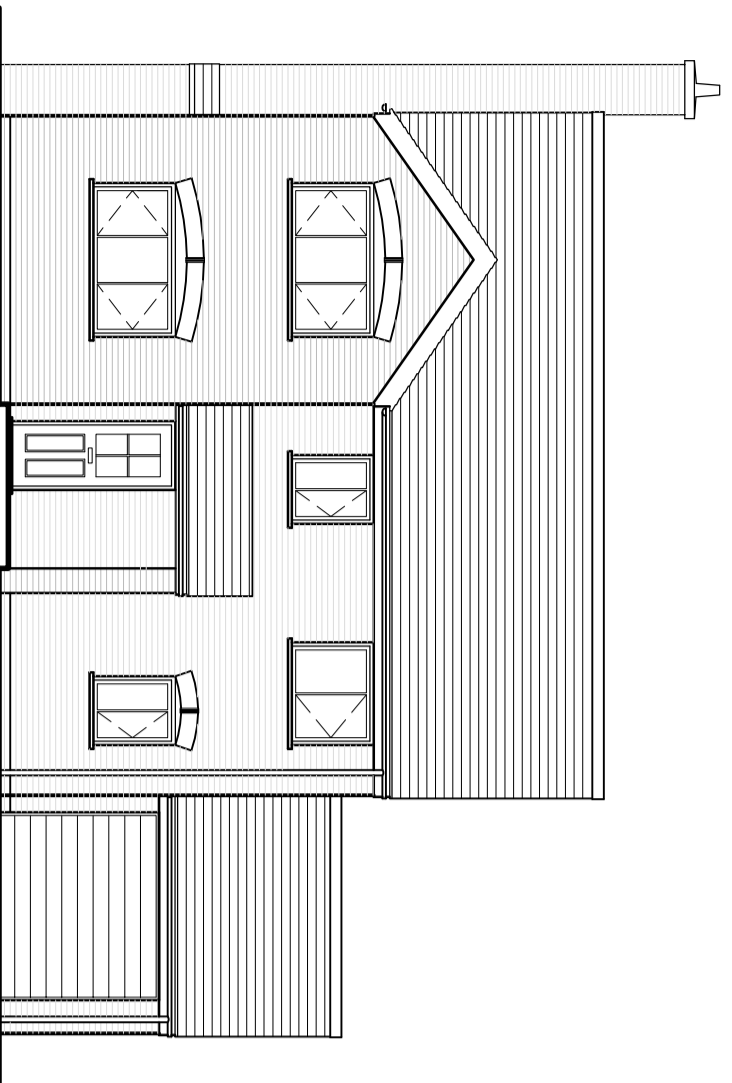
- Brickwork "Traditional Brick" Brookmill Blend
- Roof Tiles "Redland" Fontienne Brindle
- R.W.P.'s "Brett Martin" Cascade Halfround
- Windows White uPVC



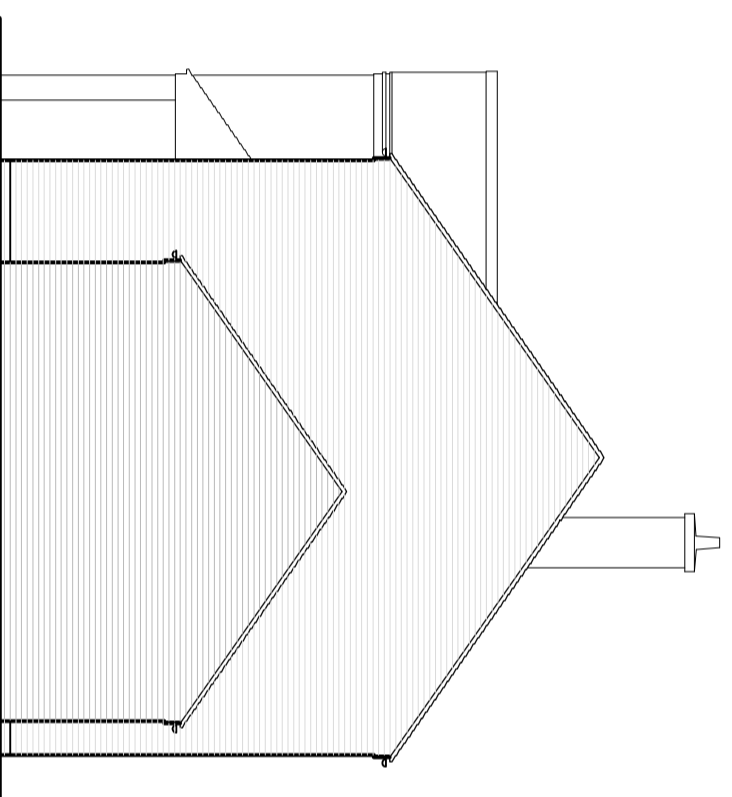
Ground Floor Plan



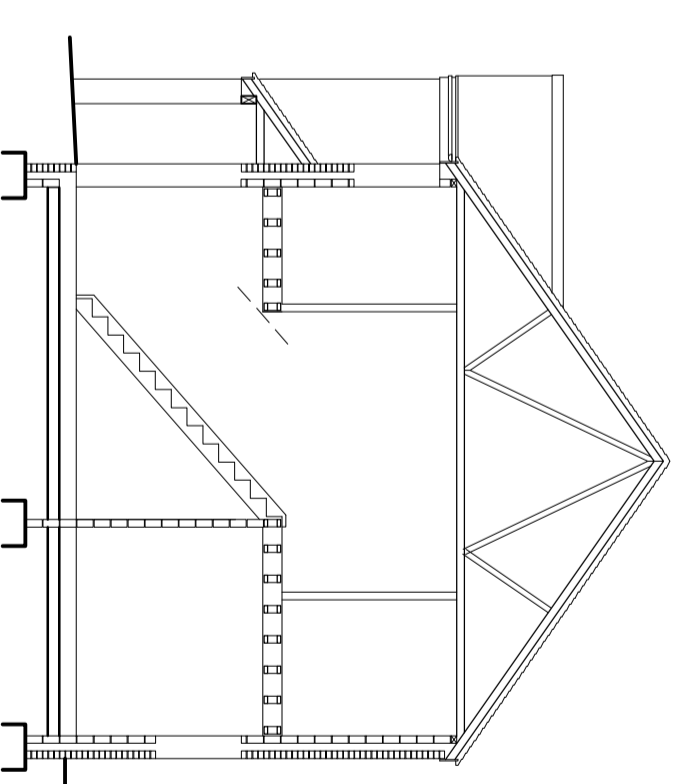
First Floor Plan



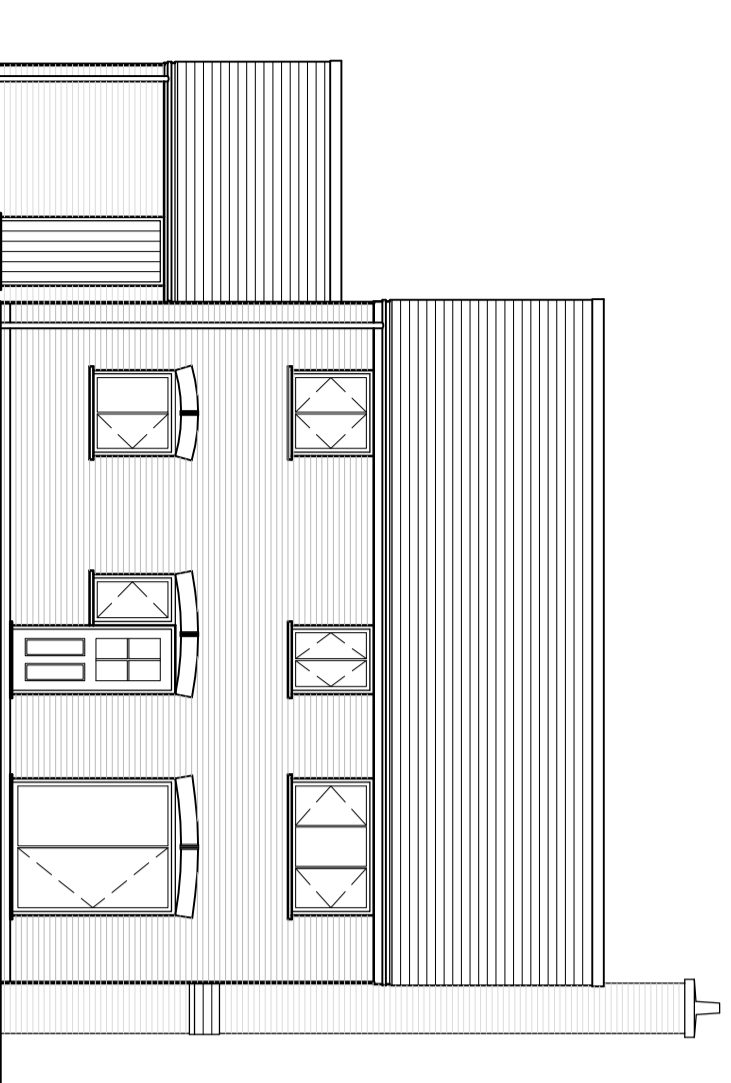
Front Elevation



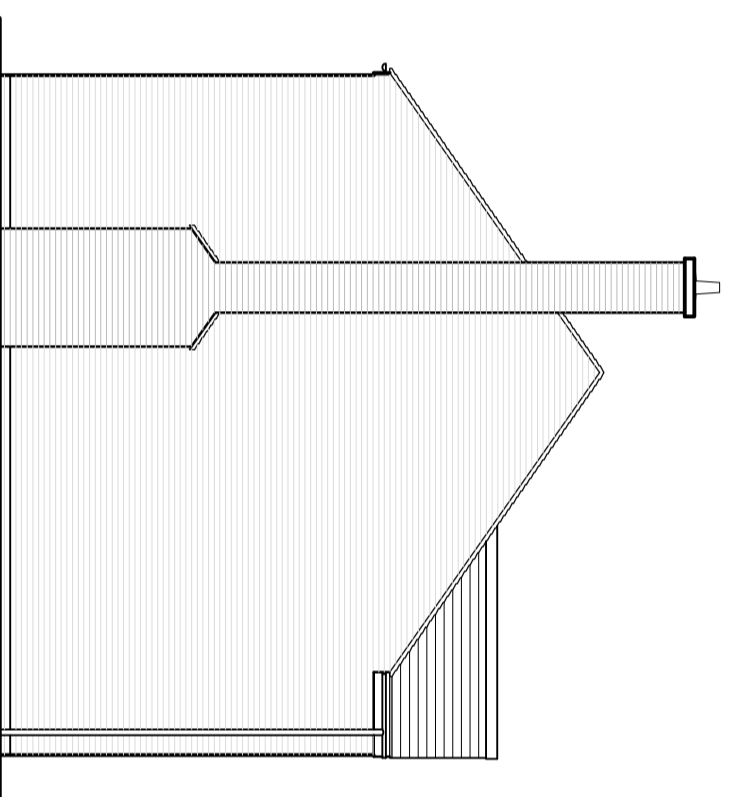
Right Hand Side Elevation



Section 1-1



Rear Elevation



Left Hand Side Elevation

Rev A. House type to Plots 1 & 3 21.01.16 SRB



Engineered Timber Solutions Ltd
 produced with precision

P. J. Barnett Associates
 Consulting Engineers

Waterloo House
 92 - 94 Chapel Ash
 Wolverhampton WV3 0TY
 Tel: 01902 427297
 Fax: 01902 712123
 E-mail: pjb@pjb.co.uk

Job Title
Proposed Residential Development
"Barley Fields"
 Rodington Heath SY4 4QX

Dwg. Title

House Type 1
 Plot 1 & 3

Scale 1:100 @ A2 Dwg. No.

Date February 2015

Drawn S.R.Ball

Checked

44171/13a