

© This drawing and the works shown are the copyright of P J Barnett Associates and may not be reproduced except by written permission.

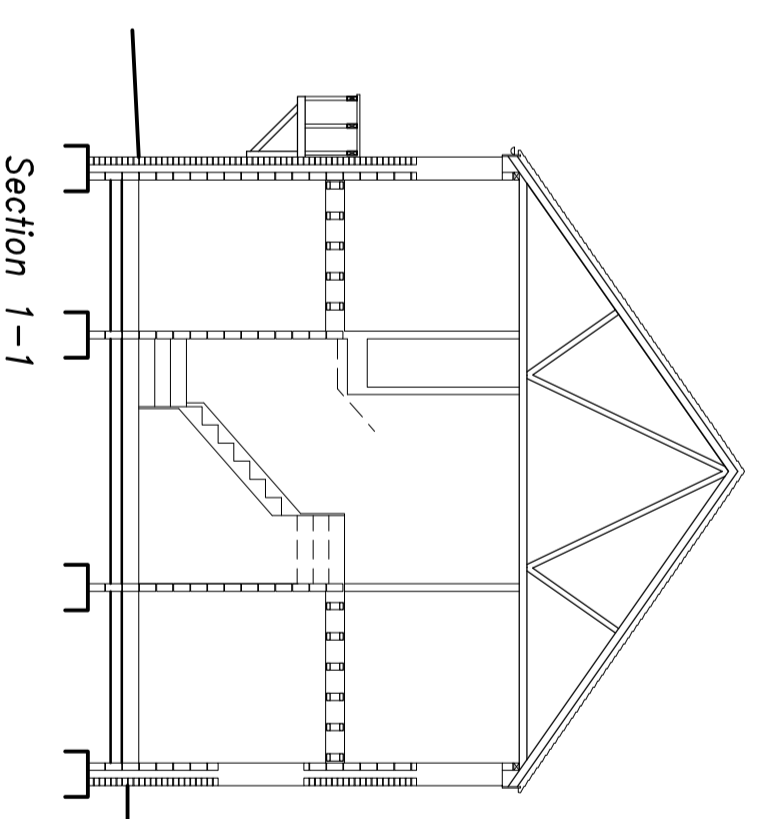
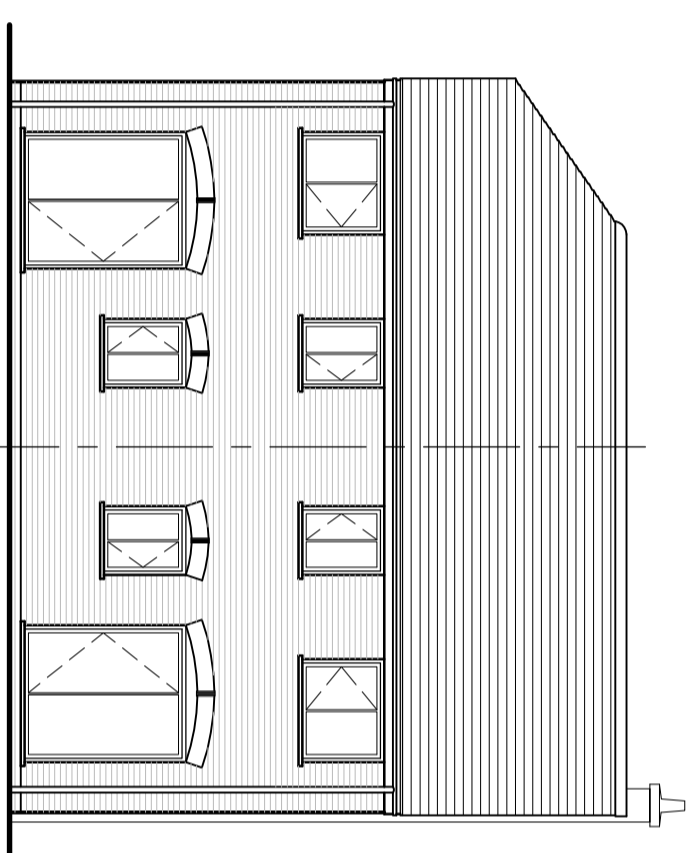
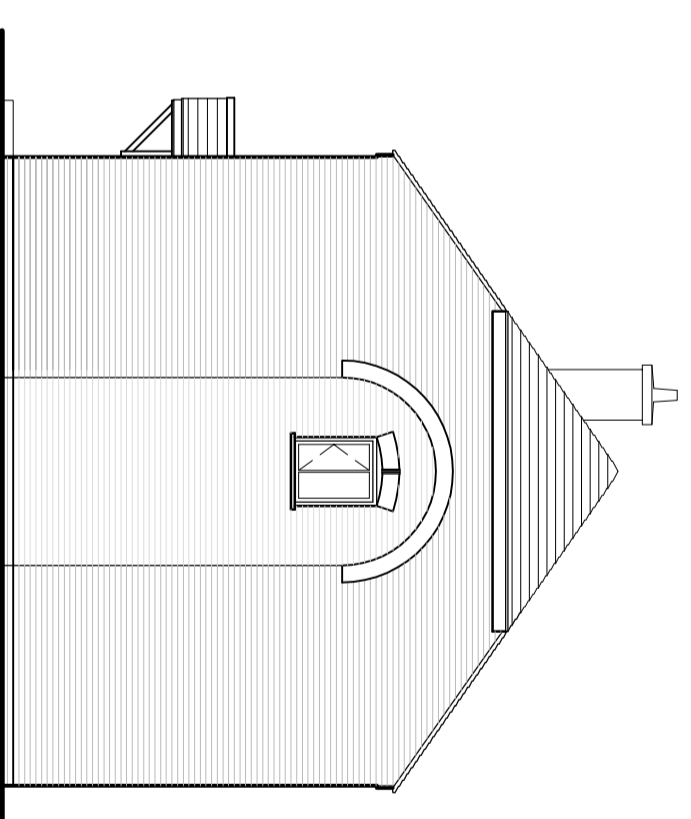
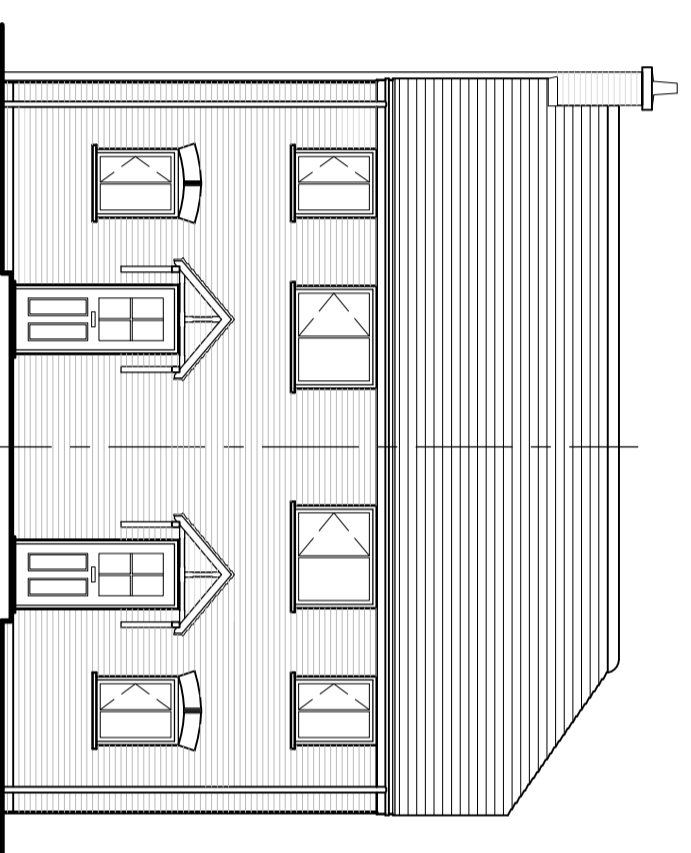
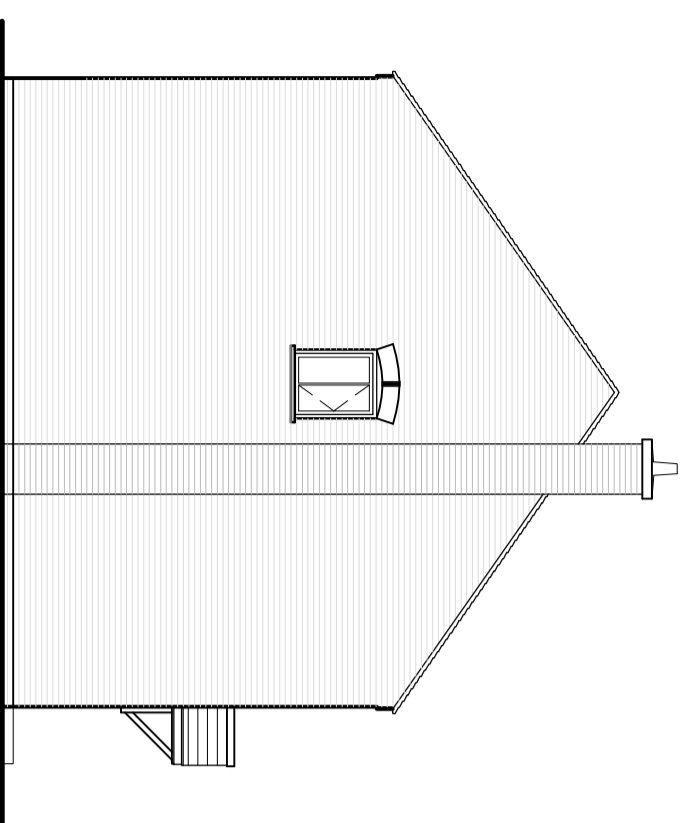
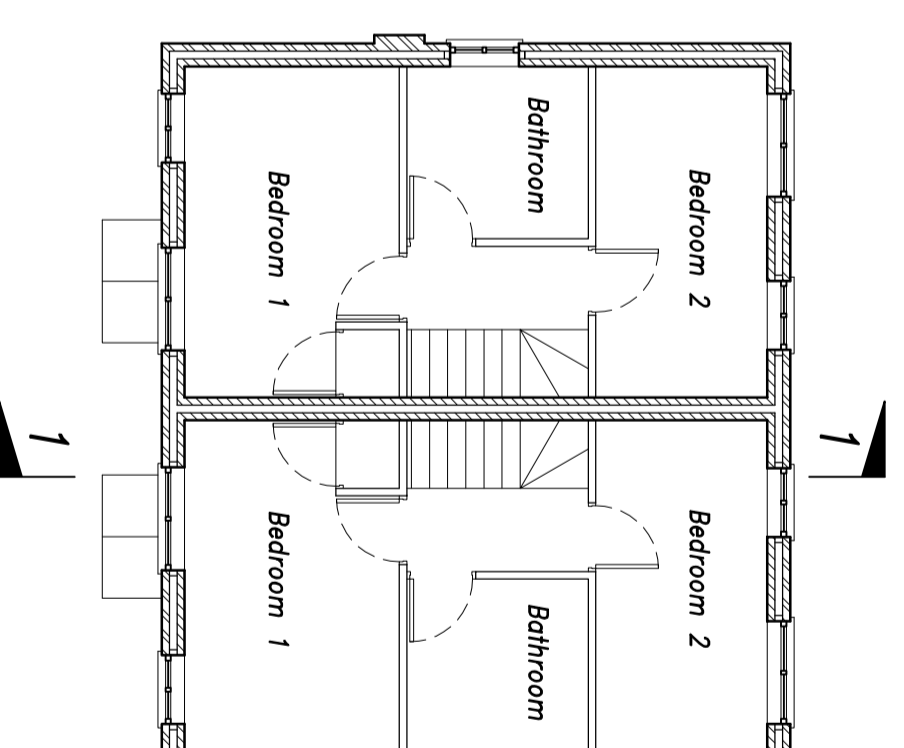
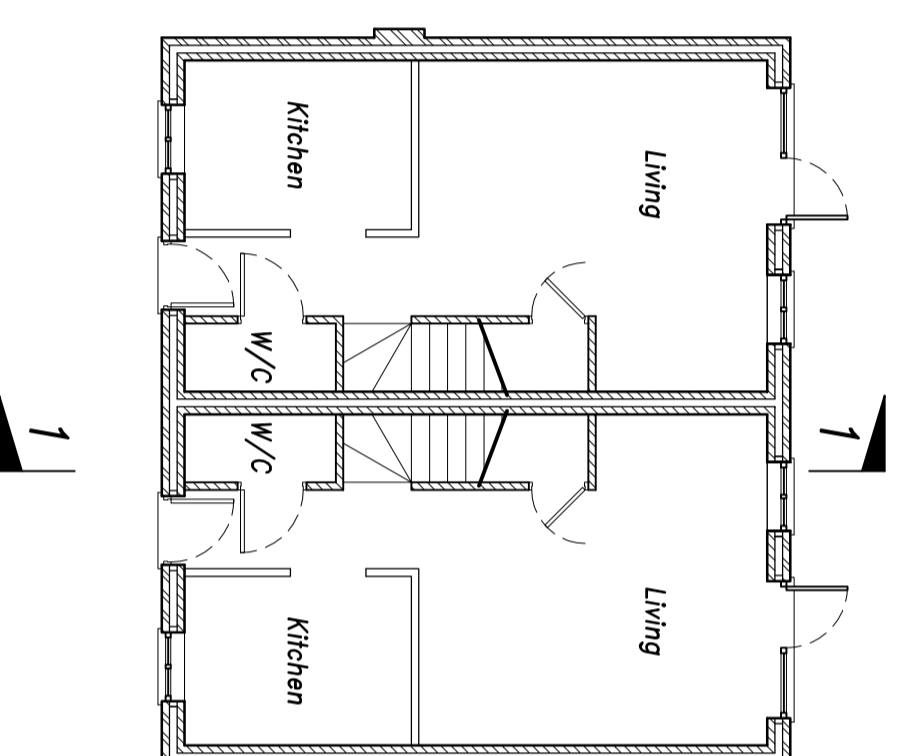
**General Notes:**

This drawing to be read in conjunction with all relevant P J Barnett Associates drawings  
All details and dimensions are to be confirmed on site, prior to works commencing or any ordering of materials

Do not scale off this drawing – use figured dimensions only ! if in doubt – ask !!

**Materials:**

- Brickwork "Traditional Brick" Brookmill Blend
- Roof Tiles "Redland" Fontienne Brindle
- R.W.P.'s "Brett Martin" Cascade Halfround
- Windows White uPVC



Rev B. Roof & right hand elevation amended 21.06.16 SRB  
Rev A. Chimney added, canopies amended. 19.06.15 SRB

**P. J. Barnett Associates**  
Consulting Engineers

Waterloo House  
92 - 94 Chapel Ash  
Wolverhampton WV3 0TY  
Tel: 01902 427297  
Fax: 01902 712123  
E-mail: pjb@pjb.co.uk

Job Title  
**Proposed Residential Development**  
**"Barley Fields"**  
Rodington Heath SY4 4QX

Dwg. Title  
**House Type 5**  
**Plots 5 & 6**

Scale	1:100 @ A2	Dwg. No.	44171/18b
Date	February 2015		
Drawn	S.R.Ball		
Checked			