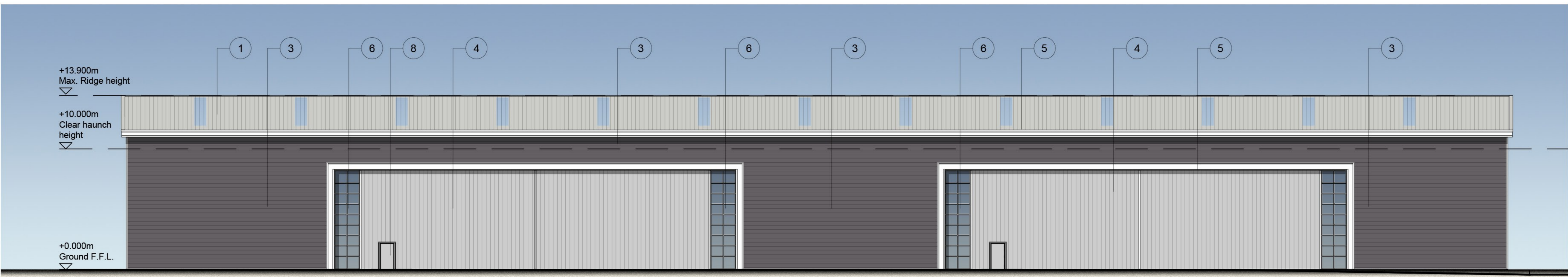
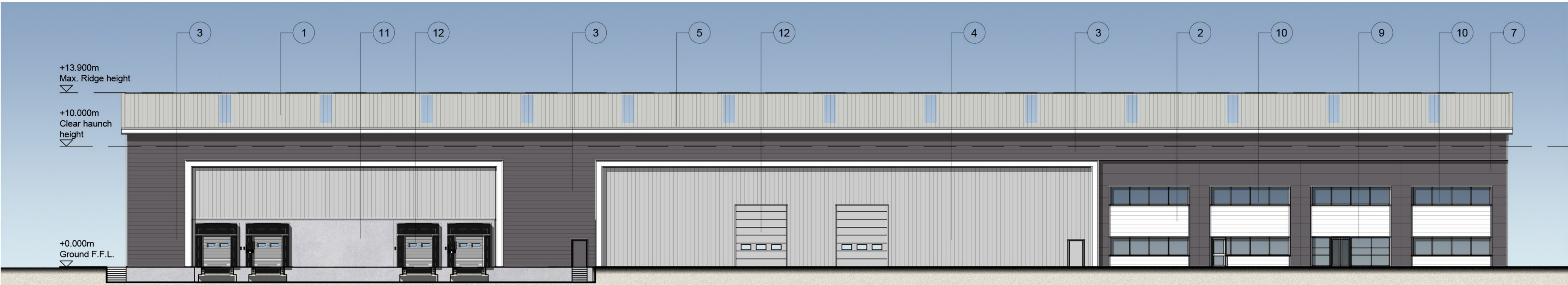


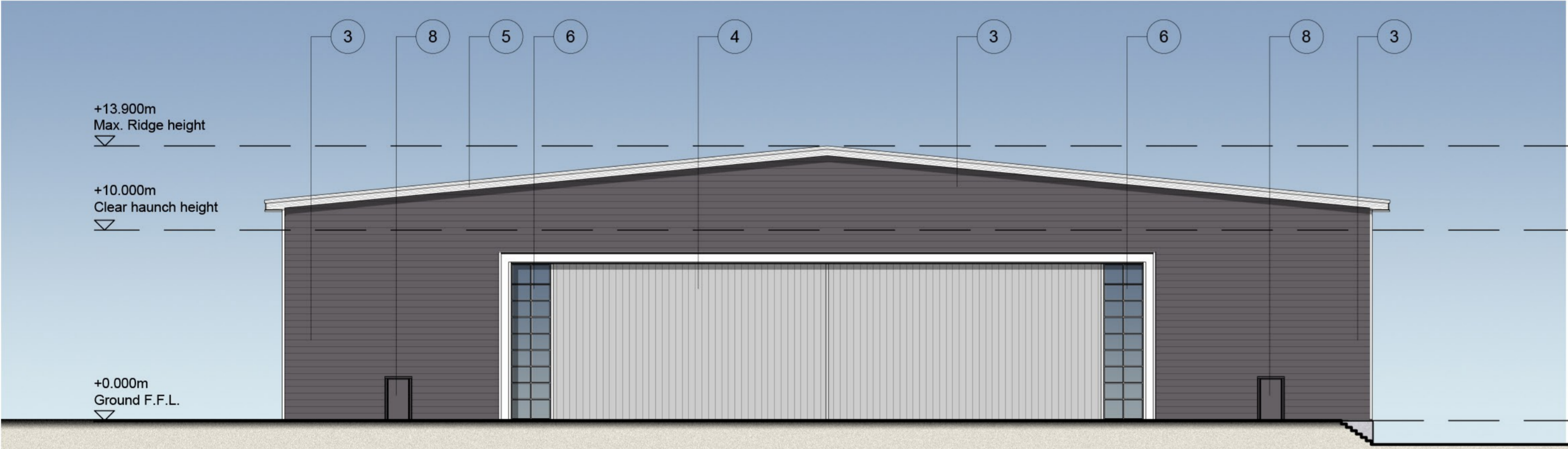
- Dimensions are in millimeters, unless stated otherwise.
 - Scaling of this drawing is not recommended.
 - It is the recipient's responsibility to print this document to the correct scale.
 - All relevant drawings and specifications should be read in conjunction with this drawing.



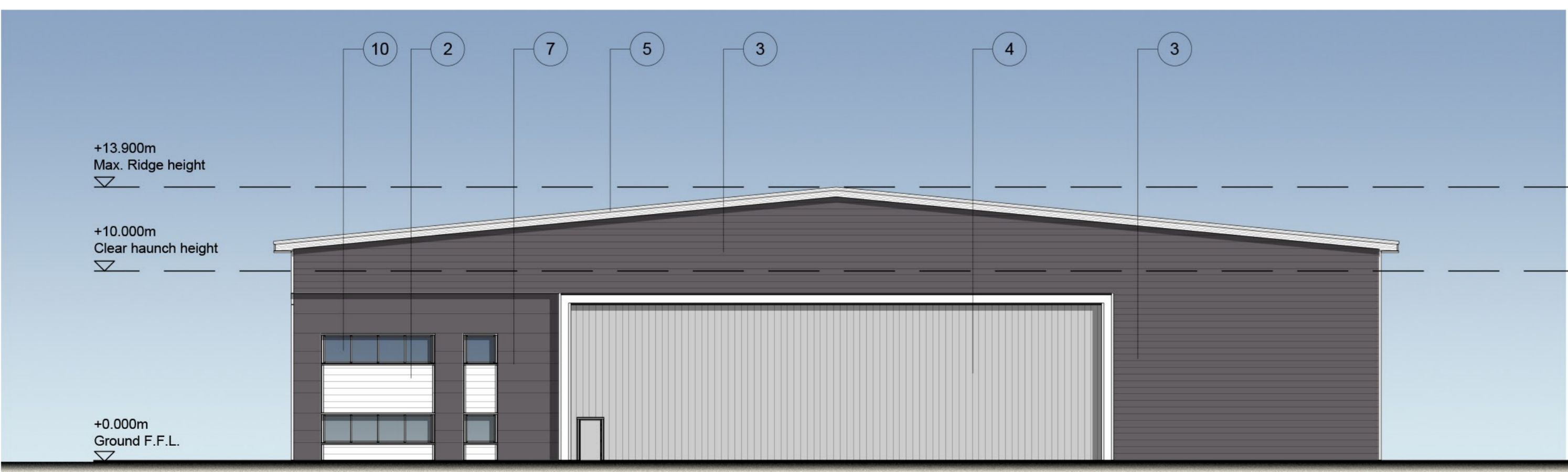
South Elevation Scale 1:200



North Elevation Scale 1:200



East Elevation Scale 1:200



West Elevation Scale 1:200

KEY:

- ① Roof cladding. Finish: Colourcoat Prisma 7038 Goosewing Grey
- ② Profiled cladding laid horizontally: Finish: Colourcoat Prisma RAL 9010 White
- ③ Profiled Cladding laid horizontally: Finish: Colourcoat Prisma RAL 7016 Anthracite
- ④ Profiled cladding laid vertically Finish: Colourcoat Prisma RAL 9006 Silver Metallic
- ⑤ Polyester powder coated aluminium trims and flashings Finish: RAL 9010 White
- ⑥ Kingspan AWP KS1000 DLAWP polcarbonate panels
- ⑦ 1000/900/600 Microrib composite cladding laid horizontally Finish: Colourcoat Prisma RAL 7016 Anthracite
- ⑧ Personnel Doors
- ⑨ Polyester powder coated aluminium curtain walling with sealed unit, clear, toughened double glazing Finish: Frames to be RAL 7016 Anthracite
- ⑩ Polyester powder coated aluminium windows with sealed unit, clear, toughened double glazing Finish: Frames to be RAL 7016 Anthracite
- ⑪ Pre-cast concrete

⑫ Composite roller shutter doors with micro rib profile Finish: RAL 9006 Silver Metallic



rev	amendments	by	ckd	date
Hortonwood West, Telford Unit 9 - Building Elevations - Option 6				
<small>Newark Beacon Innovation Centre, Calfertla Way, Newark, Nottinghamshire NG24 2TN t +44 (0)1636 653027 f +44 (0)1636 653010 e info@umcarchitects.com</small>				
Drawing Status:		Planning		
Drawn / Checked:		CA / DSU		
Date:		14.10.2015		
Scale:		1:200 A1		
Drawing no:		Revision:		
15088 P205		P1		