



**ludworth traditional brick front elevation**  
1 : 100



**ludworth traditional brick left elevation**  
1 : 100



**ludworth traditional boarded front elevation**  
1 : 100



**ludworth traditional boarded left elevation**  
1 : 100



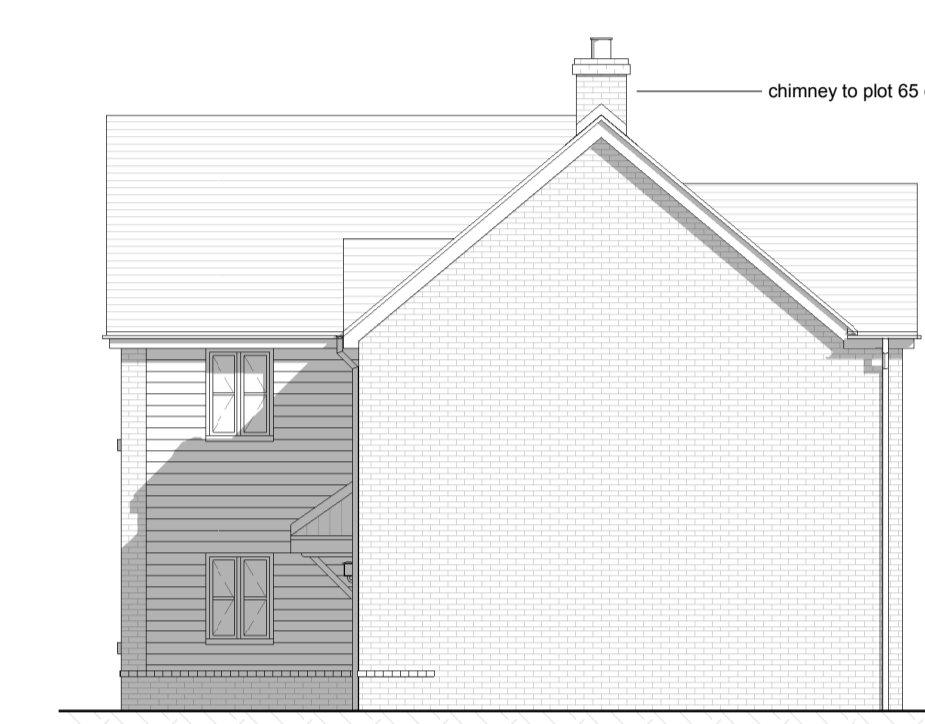
**ludworth traditional brick rear elevation**  
1 : 100



**ludworth traditional brick right elevation**  
1 : 100



**ludworth traditional boarded rear elevation**  
1 : 100

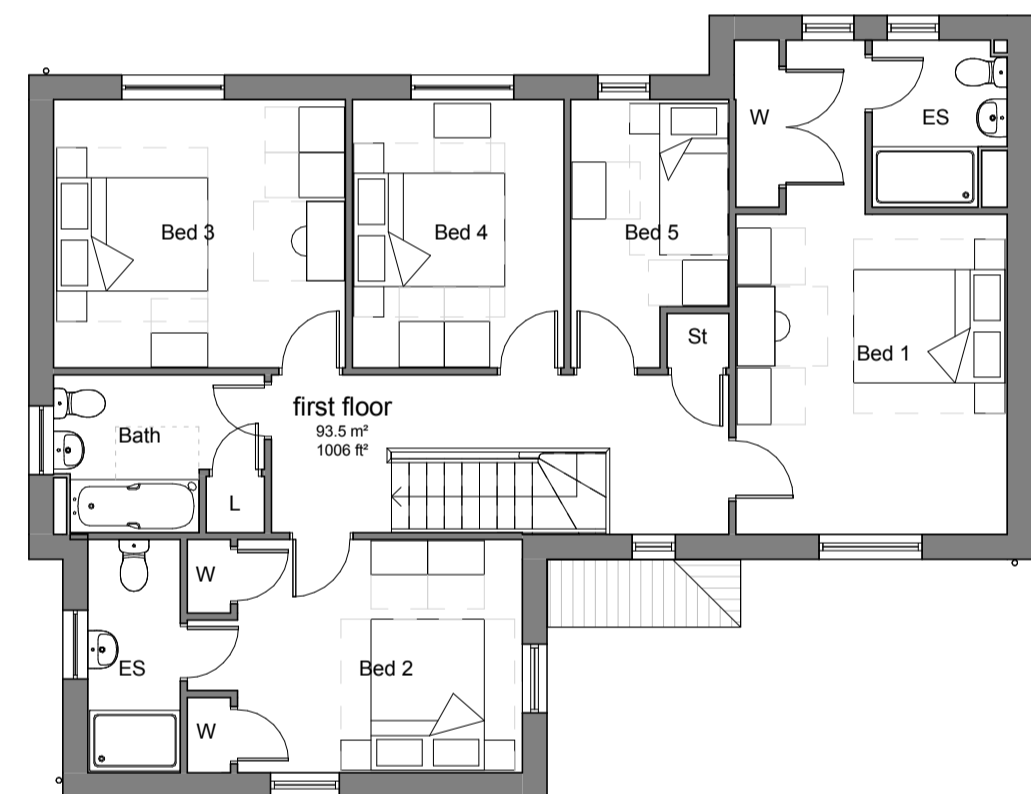


**ludworth traditional boarded right elevation**  
1 : 100

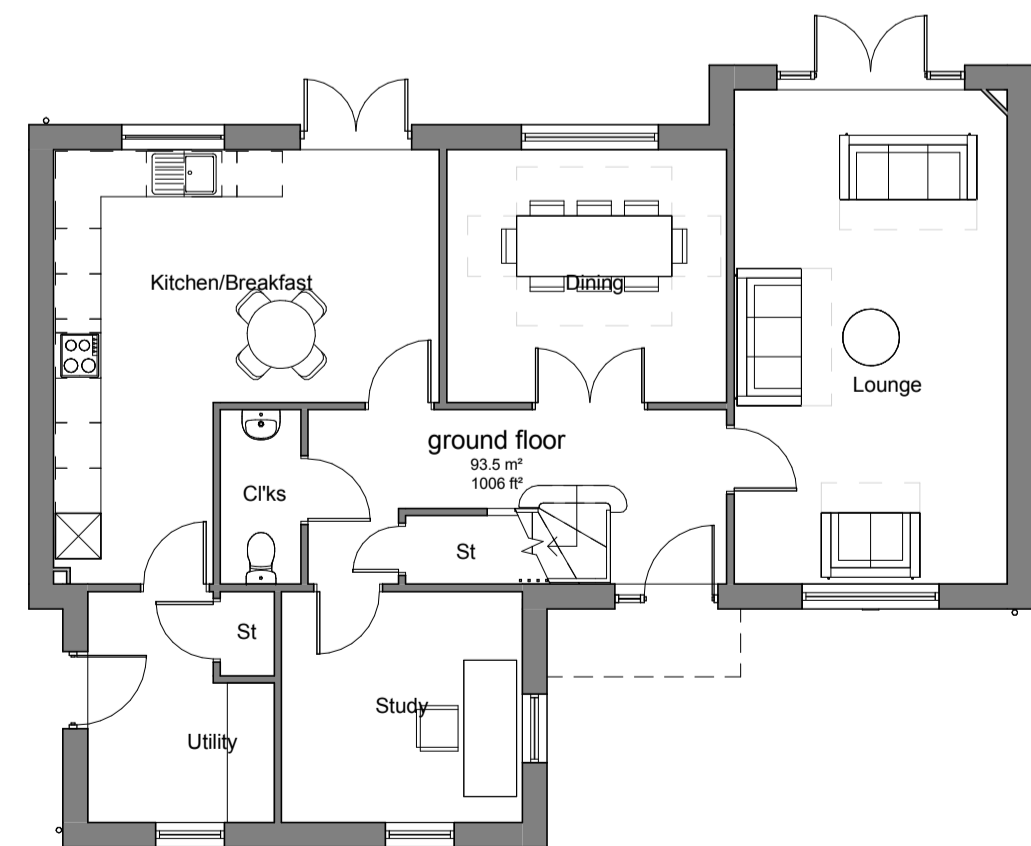
**traditional brick elevation plots 75,76**

**traditional boarded elevation without chimney plot 04**

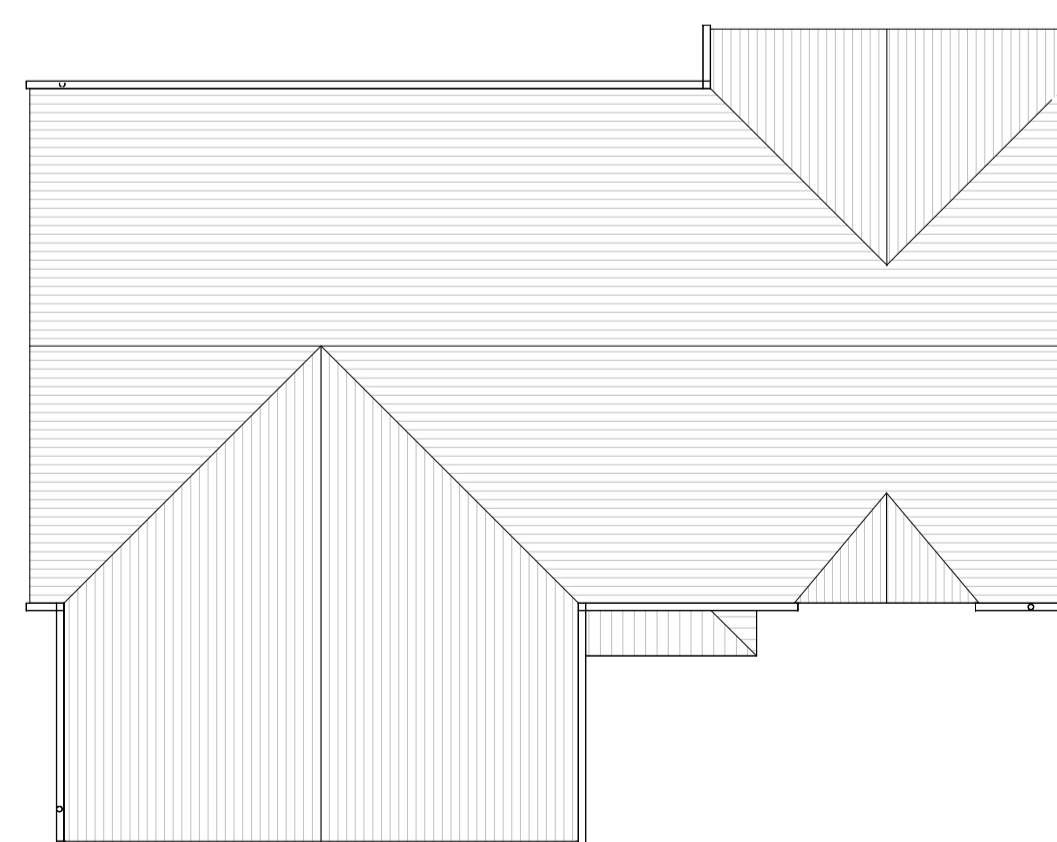
**traditional boarded with chimney elevation plot 65**



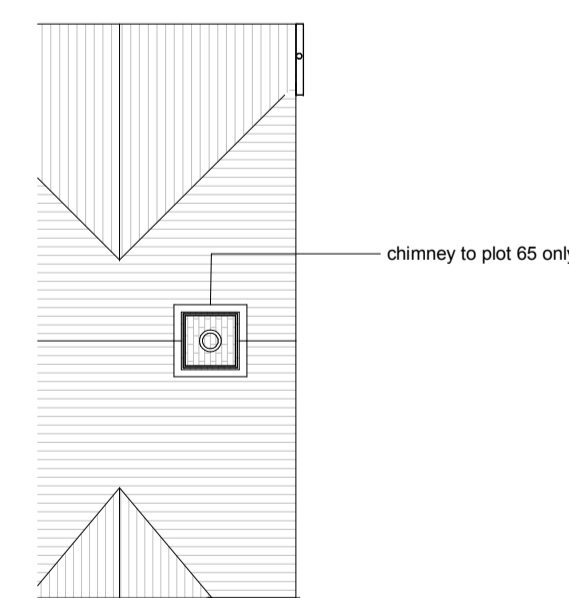
**ludworth traditional render ludworth traditional brick first floor**  
1 : 100



**ludworth traditional render ludworth traditional brick ground floor**  
1 : 100

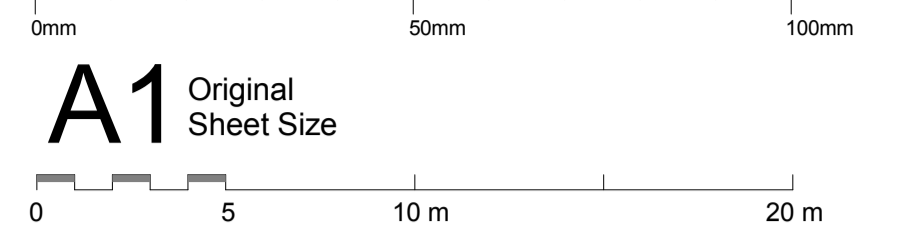


**ludworth traditional boarded ludworth traditional brick roof plan**  
1 : 100



**ludworth traditional boarded roof plan**  
1 : 100

Responsibility is not accepted for errors made by others in scaling from this drawing. All construction information should be taken from figured dimensions only.



**A1** Original Sheet Size

**materials schedule**

- 1a. brickwork TBA
- 1b. alternative brick TBA.
- 2. through colour render: white colour TBC
- 3. horizontal cladding, colour TBA
- 4. fenestration, window colour grey TBA
- 5. front door : various design, timber faced, to secure by design standard
- 6. garage door : horizontal board pattern metal ppc colour grey tba window to double garage doors.
- 7. roof tile color grey TBC
- 8. rainwater goods half round, colour black
- 9. close boarded timber fencing to rear gardens
- 10. railings & gates
- 10a. estate railings new to match existing
- 10b. mild steel electroplated ppc colour grey TBA.
- 11. existing ground level (shown dash line)
- 12. rooflight velux or similar recessed flashing
- 13. brickwork public realm, 2000 high TBC..
- 14a. lintols reconstituted stone color TBA.
- 14c. lintols brick soldier course
- 14c. lintols brick arch
- 15. cills. 15a. tiled bedded 15b. reconstituted stone
- 16. chimney

date	rev	name	chk	note
06/02/2017	A	ar	ml	updated to planning officers comments
11/01/2017	-	xx	xx	first issue

© Stride Treglown Limited 2015.



Architecture Town Planning Interior Design Building Surveying Landscape Design Graphic Design  
3 Cosser Street, London, SE1 7BU  
T 020 7401 0700 F 020 7401 0701 www.stridetreglown.co.uk

**PROJECT**  
Sites B1 and B3 Apley Telford.

**DRAWING TITLE**  
housetype plans & elevations sheet 10  
ludworth traditional\_1 of 2

STATUS				
planning issue				
SCALE	DATE	DRAWN BY	CHECKED BY	
1:100	09/01/2017	tn	ml	
PROJECT NUMBER	DRAWING NUMBER	REVISION		
22077	P(0)_039	A		

**housetype LUDWORTH traditional**

5 bed 8 person house  
area 2012 ft<sup>2</sup>  
area 187.0 m<sup>2</sup>