

Appendix 5 – Cycling Infrastructure Review

Aim

To carry out a strategic review of existing cycling infrastructure in Telford & Wrekin in order to establish the quality and conditions of the existing cycling network.

Methodology

The strategic review of existing cycling infrastructure provision was undertaken within the Access Fund Areas. The review involved a Quality of Service Assessment, which allowed the measurement of the quality of cycling routes using grading system (A*-D) and these were determined against five criteria.

Additionally, the importance of each cycling route was also assessed and each route was categorised in terms of importance. This was determined through a number of criteria based on connectivity. The table of criteria can be found below.

Importance	Criteria
Most	<ul style="list-style-type: none">• Connection between residential and trip attractors• Links over and under major roads• Provides access to a primary or secondary school• Links major routes together
Medium	<ul style="list-style-type: none">• Provides routes to parks or green spaces• Routes for general leisure• Isolated stretches of routes that provide local connectivity
Low	<ul style="list-style-type: none">• No connection between origins and attractors• Isolated short piece of route providing no purpose• Complete rural routes away from residential areas

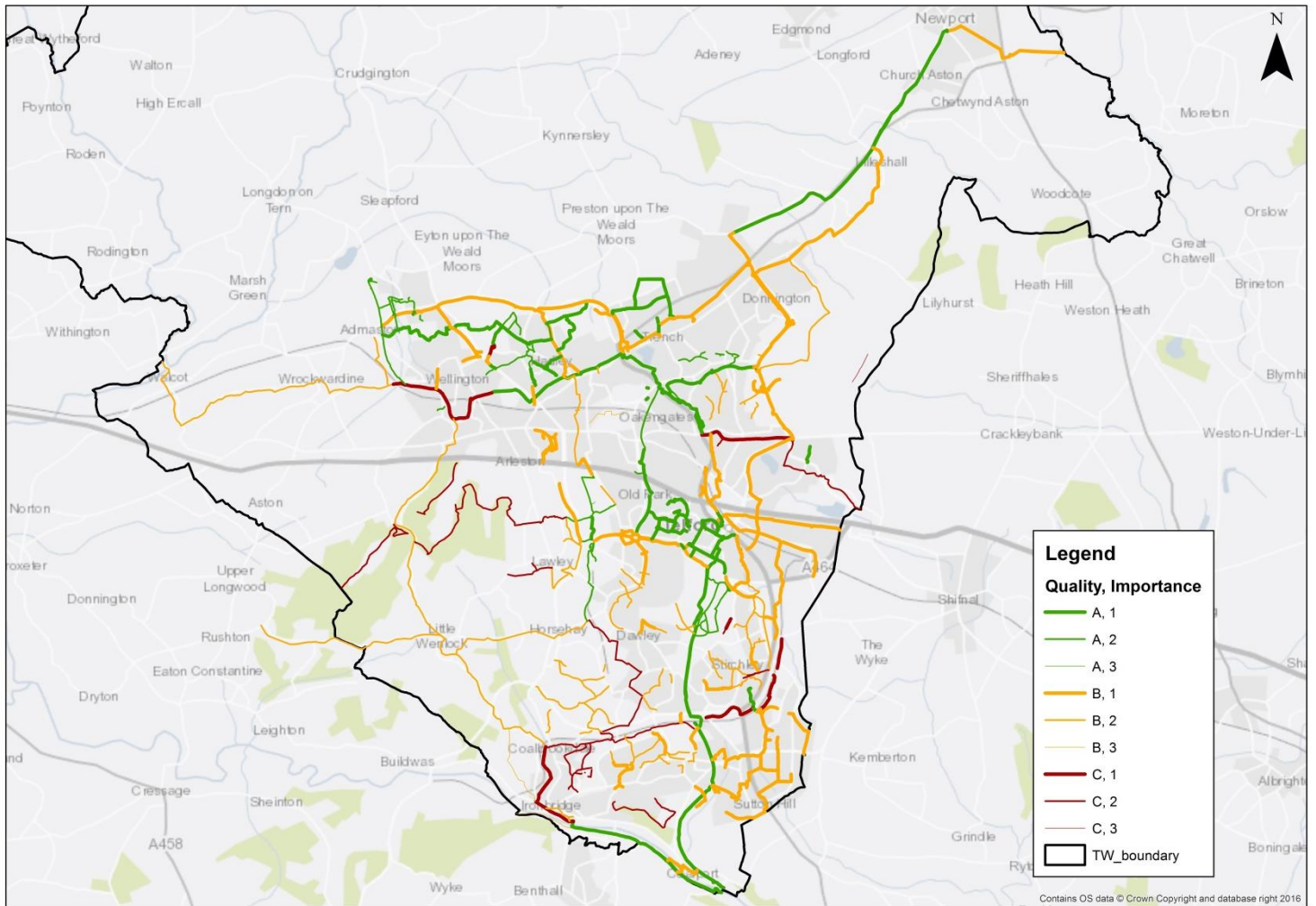
Through the assessment of both the importance and the quality of cycling routes and information was analysed and both data from quality and importance assessments were combined and can be seen through the Quality versus Importance map.

Results

Results from the site audit are highlighted in detail on the plan below. However, overall a significant number of routes were classed as a grade B with a handful of routes being evaluated as a grade C. It should be noted that no routes received a grade lower than C. Additionally, some routes received grades of A* and A and many of these were routes that were recently upgraded through the Local Sustainable Transport Fund. These included the Silkin Way, which provides a high quality traffic free route for walkers and cyclists' through urban areas of Telford and provides direct access to the Town Centre, Town Park and a number of residential areas in the South. These are in addition to the Box Road project within Telford Town Centre and the NCN 55 connecting Telford Town Centre to Newport.

The outcome of the exercise highlighted the routes and areas that require intervention. More specifically, routes that were deemed to be important but are of a poor quality would be considered as priorities. Improvements are considered to be made to the directness, safety and consecutiveness of routes through improving maintenance, surface conditions and the shared use of routes.

The figure below shows the Quality vs Importance map.



Evidence of these findings can be seen through the following images:



Silkin Way, South of Telford Town Park



Rough Park Way



Woodside Estate



Ironbridge Way