

**PLANT SCHEDULE**

Trees						
No.	Species Name	Specification	Grth	Height	Density	
2 No.	Betula pendula	Extra Heavy Standard 5 brks 3x 8B	14-16cm	425-600cm	Counted	
7 No.	Betula utilis jacquemontii	Extra Heavy Standard 5 brks 3x 8B Clear Stem 175-200	14-16cm	425-600cm	Counted	
2 No.	Carpinus betulus	Extra Heavy Standard 5 brks 3x 8B	14-16cm	425-600cm	Counted	
5 No.	Magnolia kobus	Extra Heavy Standard 5 brks 3x 8B	14-16cm	425-600cm	Counted	
2 No.	Sorbus aria 'Majestica'	Extra Heavy Standard 5 brks 3x 8B	14-16cm	425-600cm	Counted	
3 No.	Sorbus aucuparia	Heavy Standard 3x 8B 5 brks	12-14cm	350-425cm	Counted	

Conifers						
No.	Species Name	Specification	Spread	Height	Density	
14 No.	Juniperus communis 'Green Carpet'	Branches: C	20-30cm	4m		

Shrubs						
No.	Species Name	Specification	Diameter	Height	Pot Size	Density
1 No.	Amelanchier lamarckii (*)	Branches 4 brks	25-50cm	3L	Counted	
4 No.	Artemisia 'Powis Castle'	Bushy 5 brks C	20-30cm	3L	4m <sup>2</sup>	
17 No.	Aucubajaponica 'Rosaneri'	Bushy 5 brks C	30-40cm	3L	3m <sup>2</sup>	
13 No.	Berberis thunbergii	Bushy 5 brks C	30-40cm	3L	0.45C/D Double Staggered at 0.3m offset	
35 No.	Brachyglottis 'Sunshine'	Branches 4 brks C	30-40cm	3L	0.45C/D Double Staggered at 0.3m offset	
14 No.	Comus sanguinalis 'Midwinter Fire'	Branches 3 brks C	40-60cm	3L	4m <sup>2</sup>	
13 No.	Comus stolonifera 'Flavivirens (*)	Branches 4 brks C	40-60cm	3L	3m <sup>2</sup>	
4 No.	Cotoneaster dammeri 'Oakwood'	Bushy 4 brks C	30-40cm	3L	4m <sup>2</sup>	
21 No.	Cotoneaster lucicola 'Stagnum'	Bushy 4 brks C	40-60cm	3L	4m <sup>2</sup>	
234 No.	Escallonia 'Donard Seeding (*)	Bushy 4 brks C	40-60cm	3L	0.45C/D Double Staggered at 0.3m offset	
13 No.	Euonymus fortunei 'Biondy'	Bushy 7 brks C	30-40cm	5-7.5L	3m <sup>2</sup>	
6 No.	Euonymus fortunei 'Emerald 'n' Gold'	Bushy 7 brks C	30-40cm	5-7.5L	3m <sup>2</sup>	
7 No.	Euonymus fortunei 'Emerald Galety'	Bushy 7 brks C	30-40cm	5-7.5L	3m <sup>2</sup>	
28 No.	Euonymus fortunei 'Emerald Galety'	Branches 4 brks C	30-40cm	5-7.5L	0.45C/D Double Staggered at 0.3m offset	
3 No.	Euonymus fortunei 'Silver Queen'	Bushy 7 brks C	30-40cm	5-7.5L	3m <sup>2</sup>	
1 No.	Forsythia intermedia 'Lynwood Gold'	Branches 4 brks C	100-125cm	3L	Counted	
16 No.	Hebe 'Autumn Glory'	Branches 3 brks C	30-40cm	3L	4m <sup>2</sup>	
3 No.	Hebe 'Mrs Windler'	Bushy 5 brks C	30-40cm	3L	4m <sup>2</sup>	
3 No.	Hypericum 'Hidcote'	Bushy 5 brks C	30-40cm	3L	3m <sup>2</sup>	
3 No.	Hypericum moserianum	Bushy 7 brks C	30-40cm	3L	4m <sup>2</sup>	
75 No.	Hypericum moserianum	Bushy 7 brks C	30-40cm	3L	0.45C/D Double Staggered at 0.3m offset	
16 No.	Lavandula angustifolia 'Hidcote'	Bushy 7 brks C	30-40cm	5-7.5L	4m <sup>2</sup>	
10 No.	Lavandula angustifolia 'Hidcote'	Bushy 5 brks C	20-30cm	5-7.5L	0.45C/D Double Staggered at 0.3m offset	
348 No.	Ligustrum vulgare (*)	Branches 4 brks C	60-80cm	3L	0.45C/D Double Staggered at 0.3m offset	
11 No.	Lonicera nitida 'Lemon Bequity'	Bushy 4 brks C	30-40cm	3L	4m <sup>2</sup>	
14 No.	Lonicera nitida 'May Green'	Bushy 4 brks C	30-40cm	3L	4m <sup>2</sup>	
77 No.	Lonicera nitida 'May Green'	Bushy 4 brks C	30-40cm	3L	0.4C/D Double Staggered at 0.3m offset	
5 No.	Morisonia aquifolium 'Apsara'	Branches 3 brks C	30-40cm	3L	5m <sup>2</sup>	
5 No.	Pachysandra terminalis 'Green Carpet'	Several shoots 9 brks C	15-20cm	3L	6m <sup>2</sup>	
3 No.	Phormium tenax 'Bronze Baby'	Double crown 8 brks C	125-150cm	5-7.5L	Counted	
7 No.	Phorlino x fraseri 'Little Red Robin'	Branches 8 brks C	125-150cm	5-7.5L	Counted	
7 No.	Phorlino x fraseri 'Little Red Robin'	Branches 4 brks C	30-40cm	3L	4m <sup>2</sup>	
38 No.	Phorlino x fraseri 'Little Red Robin'	Branches 4 brks C	30-40cm	3L	0.45C/D Double Staggered at 0.3m offset	
20 No.	Prunus laurocerasus 'Etna (*)	Bushy 3 brks C	40-60cm	3L	0.45C/D Double Staggered at 0.3m offset	
12 No.	Prunus laurocerasus 'Otha Lyken'	Bushy 5 brks C	40-60cm	5-7.5L	3m <sup>2</sup>	
9 No.	Prunus laurocerasus 'Otha Lyken'	Bushy 5 brks C	40-60cm	5-7.5L	0.45C/D Double Staggered at 0.3m offset	
24 No.	Pyracantha 'Orange Glow (*)	Leader With Lateral 4 brks C	40-60cm	3L	0.45C/D Double Staggered at 0.3m offset	
13 No.	Rosmarinus officinalis 'Miss Jessopp's Upright'	C	2L	5m <sup>2</sup>		
13 No.	Sarcococca hookeriana var. humilis	Bushy 7 brks C	20-30cm	3L	4m <sup>2</sup>	
4 No.	Saxifraga japonica 'Rubella'	Bushy 5 brks C	30-40cm	3L	4m <sup>2</sup>	
3 No.	Saxifraga japonica 'Rubella'	Bushy 3 brks C	30-40cm	5-7.5L	4m <sup>2</sup>	
5 No.	Saxifraga japonica 'Candle Light'	Bushy 4 brks C	40-60cm	3L	4m <sup>2</sup>	
4 No.	Stephanandra incisa 'Clippa'	Branches 5 brks C	30-40cm	3L	4m <sup>2</sup>	
18 No.	Symphoricarpos chenaultii 'Hancock'	Branches 5 brks C	40-60cm	3L	4m <sup>2</sup>	
16 No.	Viburnum davidii	Bushy 4 brks C	30-40cm	5-7.5L	3m <sup>2</sup>	
107 No.	Viburnum tinus 'Eve Price (*)	3 brks C	30-40cm	3L	0.45C/D Double Staggered at 0.3m offset	
22 No.	Vincetoxicum 'Green Carpet'	Several shoots C	20-30cm	3L	6m <sup>2</sup>	

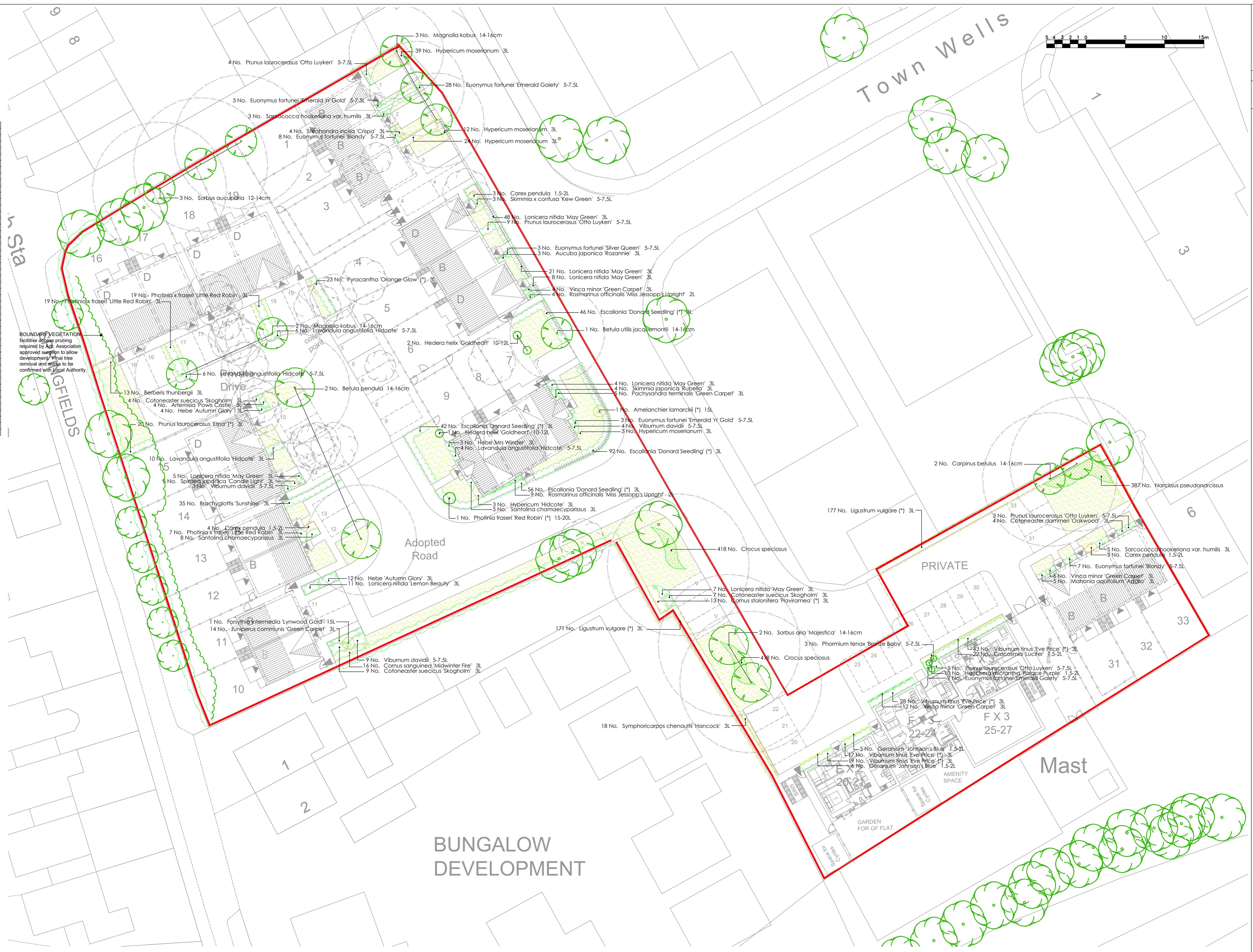
Climbers						
No.	Species Name	Specification	Spread	Height	Pot Size	Density
3 No.	Hedera helix 'Goldheart'	Several Shoots 5 brks Framed	100-150cm	10-12L	Counted	

Herbaceous						
No.	Species Name	Specification	Diameter	Height	Pot Size	Density
1 No.	Carex pendula	C Full pot	1.5-2L	3m <sup>2</sup>		
11 No.	Saxifraga 'Johnson's Blue'	C Full pot	1.5-2L	5m <sup>2</sup>		
10 No.	Heuchera micrantha 'Palace Purple'	C	1.5-2L	7m <sup>2</sup>		

Bulbs						
No.	Species Name	Specification	Diameter	Pot Size	Density	
22 No.	Crocus 'Lucifer'	C	1.5-2L	7m <sup>2</sup>		
534 No.	Crocus speciosus	Grade 6+	1.5-2L	5m <sup>2</sup>		
387 No.	Narcissus pseudonarcissus	Grade 7+ (Topset)	1.5-2L	25m <sup>2</sup>		

**PLANNING NOTES:**

- SOILS:** Subgrade / subsoil to be prepared in accordance with BS 8601 and BS 4428 and scarified or ripped to 300mm depth prior to spreading topsoil to alleviate compaction and promote drainage. Imported topsoil to be in accordance with BS 3882: 2015 'Multipurpose Grade' with minimum soil organic matter contents 1% greater than the minima value (or as approved). Imported topsoil (and 'as saved' if requested) is to be laboratory tested to BS 3882: 2015 and ameliorated as required to meet the required characteristics as detailed within Table 1 of BS 3882: 2015 specification. Grass areas to be a minimum depth of 150mm. Shrub beds 400mm depth. Standard tree planting areas 700mm and forestry / transplants 300mm depth. Any weeds / grass growth to be sprayed out with appropriate herbicide at least 10 days prior to cultivation. Incorporate proprietary non peat compost to BS PAS 100 to 50mm depth evenly worked into soil.
- Proposed services (electric, water, gas etc)** in landscape areas should be installed as a minimum below the required topsoil depths and clearly identified in accordance with service / utility requirements.
- BUILDING FOUNDATION DESIGN:** All landscape proposals are to be referred to by the structural engineer during foundation design.
- PROPOSED PLANTING:** Should planting be required outside of the planting season (October - March) any bare root or rootballed stock specified is to be regulated with containerised stock to an appropriate or similar specification to the approval of the landscape architect prior to ordering.
- EXISTING TREES:** Where trees are to be retained they should be subject to a full arboricultural inspection to assess condition and safety. Retained trees shall be protected from damage by erection of 2.3m wide mesh fencing on a scaffold framework in accordance BS 5837:2012 Figure 2. These barriers shall be maintained in position and in good condition until works are complete. Fencing to be located in accordance with Table D.1 at a radius of 1.5m from the stem diameter (single stem trees) or based on the combined stem diameter for multi-stem trees (trees with more than one stem arising below 1.5m above ground level) refer to Clause 4.6. Further precautions are to be taken as detailed within BS 5837:2012 9.2.4.
- TREE SURGERY / REMOVAL:** Tree surgery and tree removal to be carried out by an Arboriculture Association approved Tree surgeon in accordance with BS 3989:2010. Arisings to be removed to a licensed tip.



**LEGEND: SOFT LANDSCAPING**

- GROUND COVER: deciduous shrub ground cover planting with specimen shrubs.
- GROUND COVER: evergreen shrub ground cover planting with specimen shrubs.
- GROUND COVER: herbaceous ground cover planting with specimen shrubs.
- GROUND COVER: ornamental grass ground cover planting as detailed.
- HEDGE: evergreen shrub hedge as detailed.
- DECIDUOUS HEDGE: shrub hedge as detailed, reinforced with timber post & wire fence where indicated.
- SPECIMEN SHRUBS: specimen shrub planting as detailed.
- SPECIMEN CLIMBERS: specimen climbing plants as detailed.
- GRASS: cultivated turf to road frontages, existing areas to be made good with seed.
- BULB PLANTING: to be scattered in proposed grassed areas, under trees and adjacent to and/or in shrubbed areas to add seasonal interest.

**EXISTING HEDGE:** dead plants and bramble to be removed & hedge gapped up with native species.

**TREE PLANTING:** standard tree planting with NHC radii. Tree Canopy spread illustrated at 25 years growth. Trees at a distance of 1.5m or closer to the highway/footway to have a root barrier installed.

**EXISTING TREES:** to be retained in accordance with BS 5837 in relation to Construction 2012. Based on the Topographical Survey and the Tree Survey dated 01.10.2015 by Tom Supple.

**TREES TO BE REMOVED:** due to condition & to allow development.

**NHBC Guidelines 2017 Chapter 4.2 'Building near trees':**

NHBC tree radii illustrated based on Medium soils assuming foundation depth of 0.5m. Buildings within the NHBC tree radius should be designed so that their foundations are to a suitable depth in accordance with the NHBC guidelines.

Asterisk (\*) on planting tags identify shrubs with a mature height above 1.8m where adjacent foundation should be designed by Engineers in accordance with NHBC guidelines 2017 Tables 3 or 5 of sections D & E.

**Highways:**

Trees at a distance of 1.5m or closer to the highway/footway to have a root barrier installed.

**client:** LOVELL PARTNERSHIP  
**project:** TOWN WELLS, NEWPORT  
**title:** DETAILED SOFT LANDSCAPE PROPOSALS  
**status:** PLANNING  
**date:** FEB 17 17:01-01  
**drawn:** DR  
**number:** 17-017-01  
**scale/AD:** 1:200  
**checked:** TWG  
**revision:** (-)

**Bea Landscape Design Ltd**  
 132A The Willows, Compton Road, Waverhampton, WY3 9JH  
 T: 01902 424 950 / 01902 425 001  
 E: info@bealandscape.co.uk  
 W: www.bealandscape.co.uk

This drawing and the design it depicts are copyright and may not be copied or reproduced without the permission of the Landscape Design & Facility. It will be accepted for amendments made by others. This drawing is to be used in conjunction with the landscape specification and other relevant drawings.

Contains Ordnance Survey Data © Crown Copyright and Database Right 2015 © Crown Copyright. All Rights Reserved 100010010

Do not scale from this drawing. Figured dimensions only to be used. Refer only to the drawing to check dimensions.

rev: \_\_\_\_\_ date: \_\_\_\_\_ amendments: \_\_\_\_\_ alt: \_\_\_\_\_  
 (-) (00/00/0000) (.....) (-)