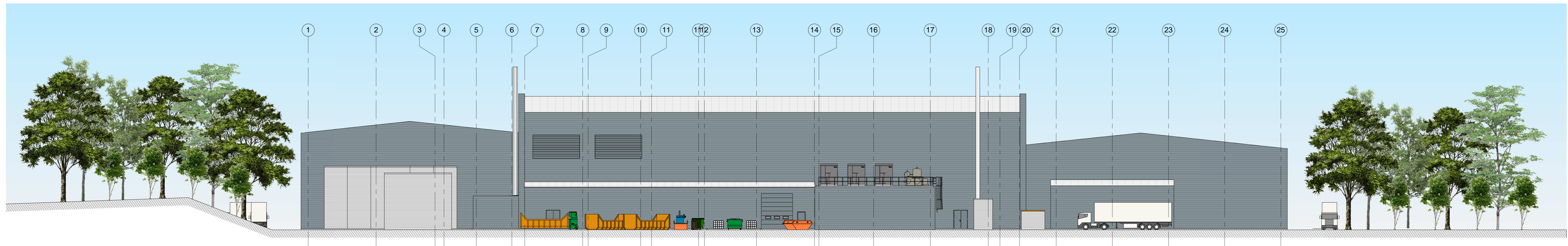
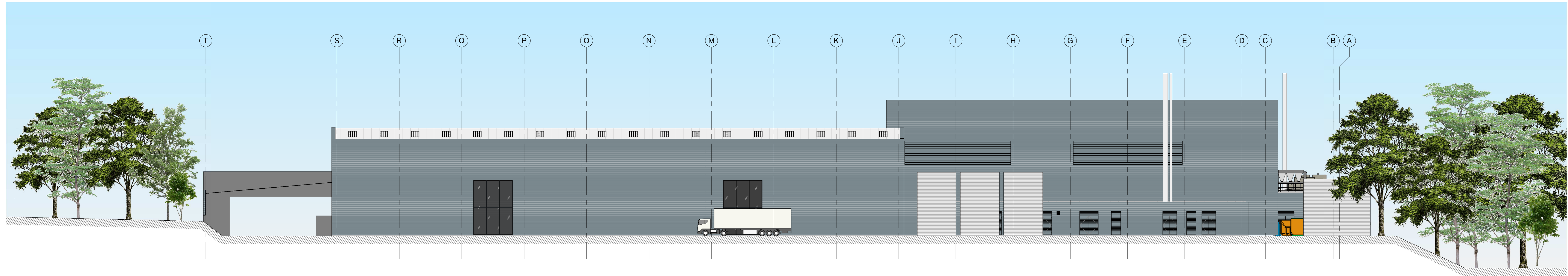


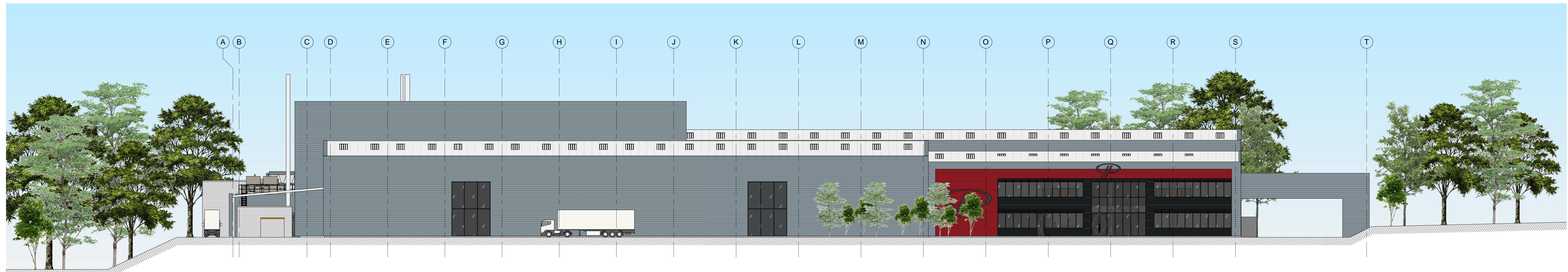
East Elevation
1:200



West Elevation
1:200

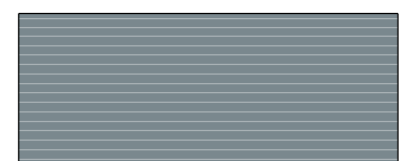

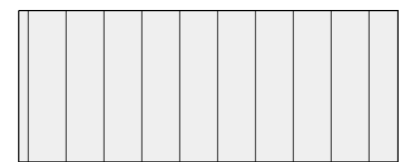
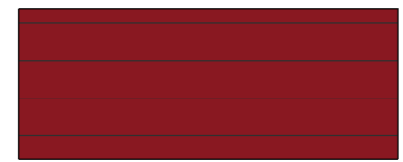
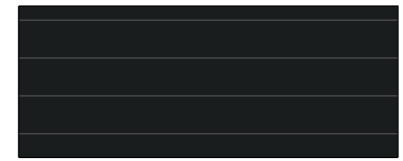


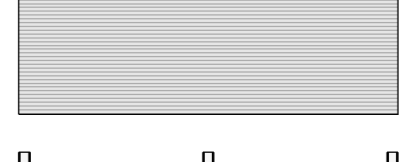
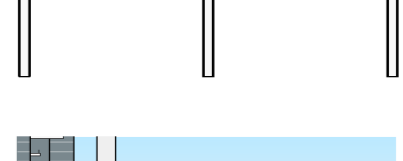
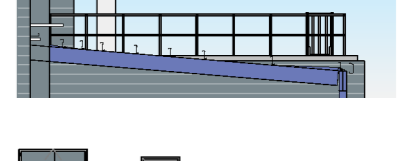



North Elevation
1:200




South Elevation
1:200

External Finishes

-  Horizontal Profiled Wall Cladding, with a mid grey finish RAL7000 (H31/121A&132A)
-  Insulated Industrial Doors, with a mid grey finish RAL7000
-  Profiled Roofing Cladding, with an off white finish, 10-15% rooflights to all areas except 15m high roof (tallest)
-  Flat/Microrib Wall Cladding Panels, with Ruby Red RAL3003 colour finish (H43/110A)
-  Flat/Microrib Wall Cladding Panels, with a dark grey RAL7016 colour finish (H43/110A)
-  Glazed elements, with dark grey RAL 7016 colour finish to frames
-  Metal Louvres with finish to match adjacent cladding
-  Sprinkler tanks profiled galvanized Steel Cladding
-  Posts to Canopies, hot rolled steel sections, with grey painted Finish
-  Guarding to External Plant Area Roof, galvanized steel or self finish aluminium
-  Personnel Doors, metal with grey finish to closely match cladding in which they occur

REV	DESCRIPTION	DATE	BY
(E)	Update 20/03/17	20/03/17	ELP
(D)	Update 09/02/17	09/02/17	ELP
(C)	Update 23/11/16	23/11/16	JP
(B)	Update to client's comments 21/11/16	28/11/16	ELP
(A)	Issued to Polytec Group 03/11/16	14/11/16	ROM
(/)	FIRST ISSUE	11/11/16	ROM

DESIGNER
ONE Creative Environments Ltd
6 The Terrace
Worthington Drive
Worthington WA 2008
Tel: 01895 92 200
Fax: 01895 92 333
e: info@one.com.au



CLIENT
POLYTEC GROUP

PROJECT TITLE
Polytec Group Limited
Plant 2, Plots 2 & 3, Telford 54, Naird Road TF3 3AH

DRAWN BY	POSITION	DATE
ELP	Architectural Technician	28/11/2016
DESIGNED BY	POSITION	DATE
Robert Moore	Director	20/03/2017
APPROVED FOR ISSUE BY	POSITION	DATE
Robert Moore	Director	20/03/2017

DRAWING TITLE
Scheme Design - Phase 3 Elevations

DRAWING STATUS	SCALE	
DESIGN	1:200	
JOB NUMBER	DRAWING NUMBER	REVISION
P0582	DR-1-023	(E)

© Copyright of the Creative Environments Ltd. All rights reserved. Other than Creative Environments Ltd.