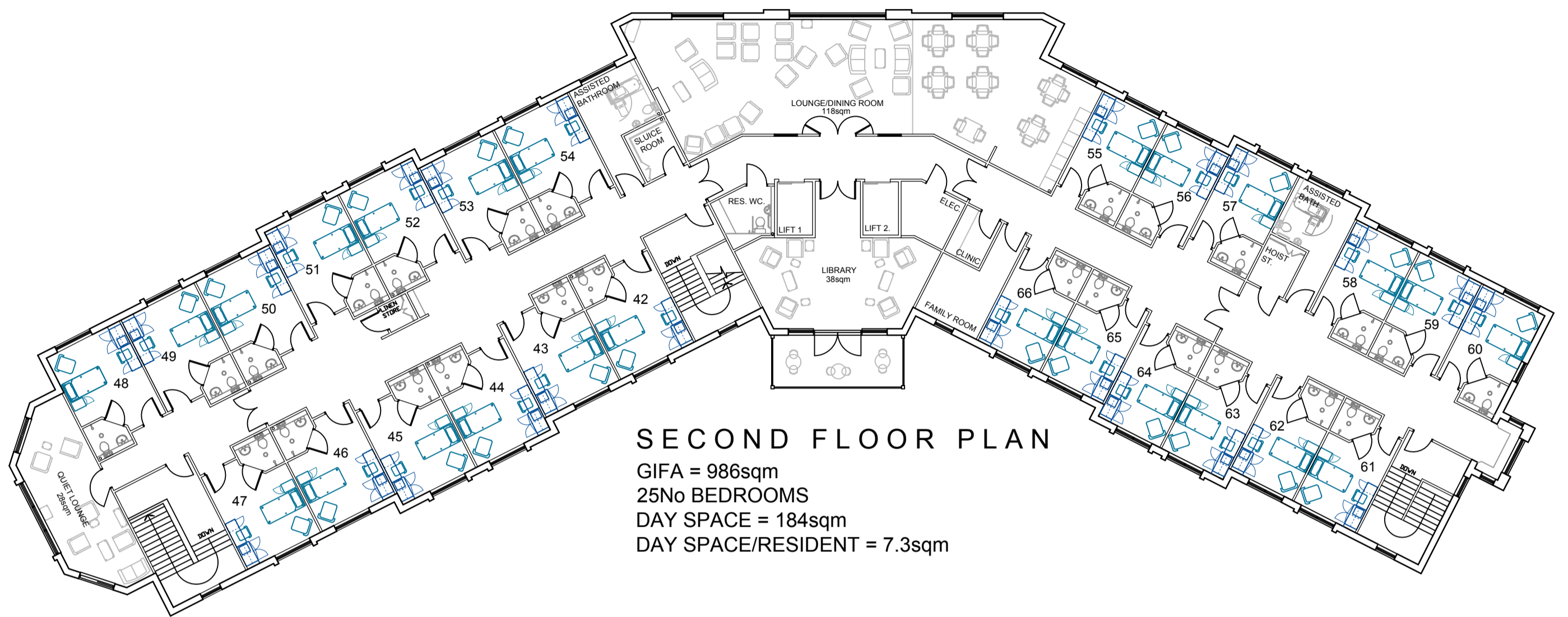
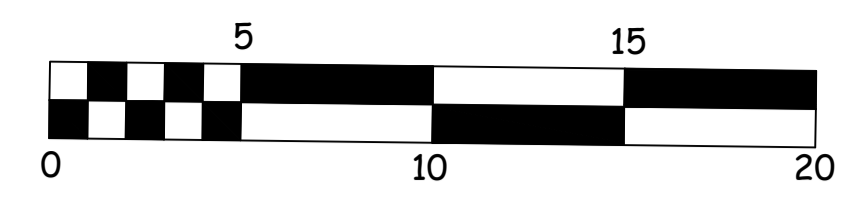
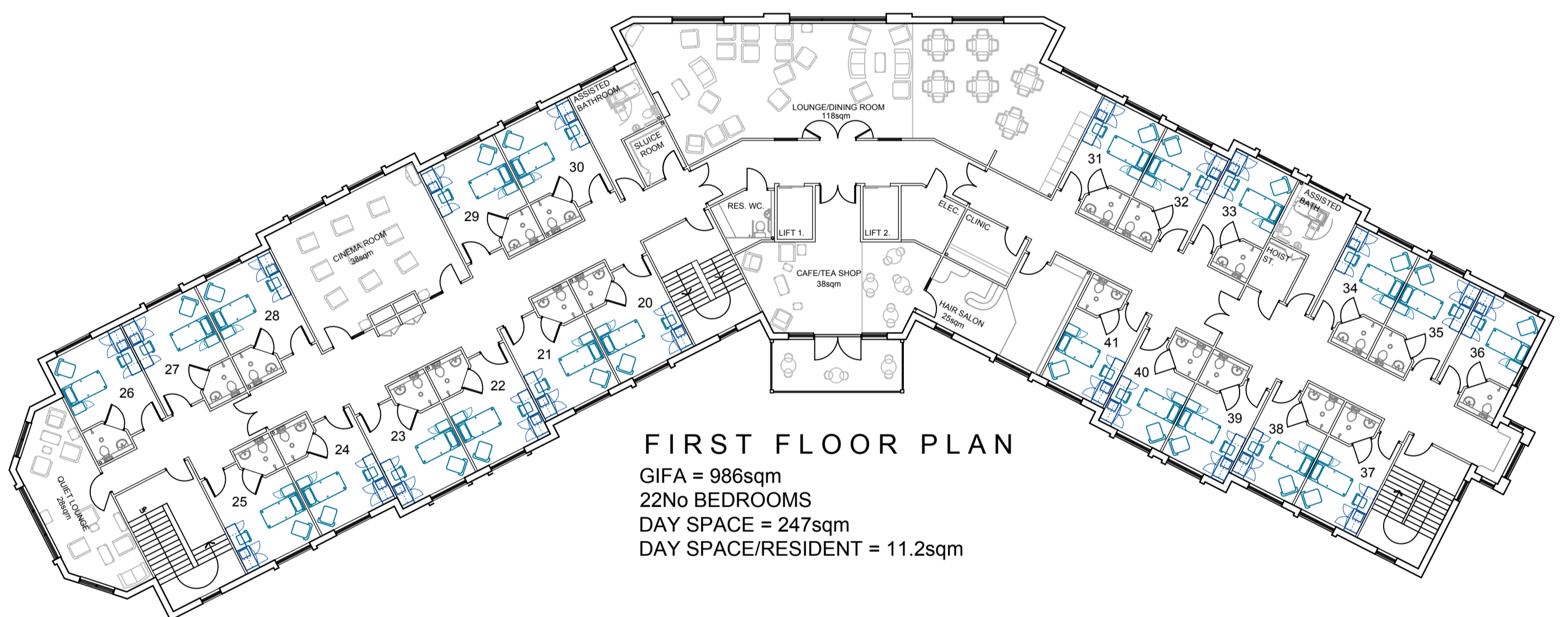


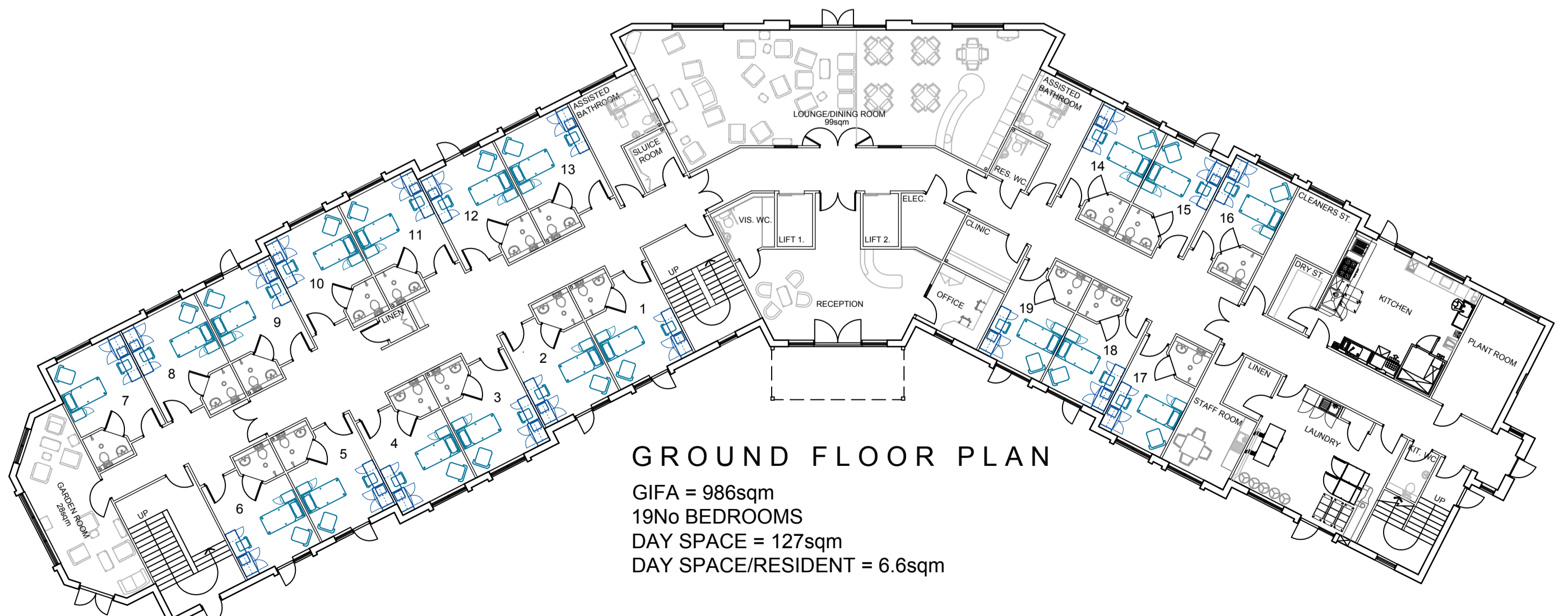
3 STOREY 66 BED CARE HOME
 13sqm/16sqm BEDROOMS (excl. ensuites)
 GIFA = 2958sqm
 BUILDING FOOTPRINT = 1042sqm
 FLOOR AREA / RESIDENT = 44.8sqm
 DAY SPACE = 558sqm
 DAY SPACE / RESIDENT = 8.4sqm



SECOND FLOOR PLAN
 GIFA = 986sqm
 25No BEDROOMS
 DAY SPACE = 184sqm
 DAY SPACE/RESIDENT = 7.3sqm



FIRST FLOOR PLAN
 GIFA = 986sqm
 22No BEDROOMS
 DAY SPACE = 247sqm
 DAY SPACE/RESIDENT = 11.2sqm



GROUND FLOOR PLAN
 GIFA = 986sqm
 19No BEDROOMS
 DAY SPACE = 127sqm
 DAY SPACE/RESIDENT = 6.6sqm

A	12-06-17	REVISED TO PLANNERS COMMENTS	GB
REV	DATE	DETAILS OF AMENDMENTS	DRAWN

REVISIONS

ALL MEASUREMENTS IN mm - DO NOT SCALE - IF IN DOUBT ASK



LNT CONSTRUCTION LTD
 UNIT 2, HELIOS 47
 ISABELLA ROAD
 GARFORTH
 LS25 2DY
 Tel: 0113 3853858
 Fax: 0113 3853859

CLIENT

SITE
 LAWLEY SQUARE
 TELFORD
 TF4 2PP

TITLE
 PROPOSED 66 BED CARE HOME
 FLOOR PLANS

SCALE	1:200@A1	DATE	23-03-17
DRAWN	GB	DWG NO.	TF4 2PP - A-04A

DRAWING STATUS

FEASIBILITY PLANNING SUBMISSION

PLANNING APPROVAL REGULATION SUBMISSION

REGULATION APPROVAL CONSTRUCTION ISSUE

CHECKED BY	DATE
APPROVED BY	DATE