

© This drawing/disk and the works depicted are the copyright of Design Development Partnership Ltd and may not be reproduced or amended except by written permission. No liability will be accepted for amendments made by other persons.

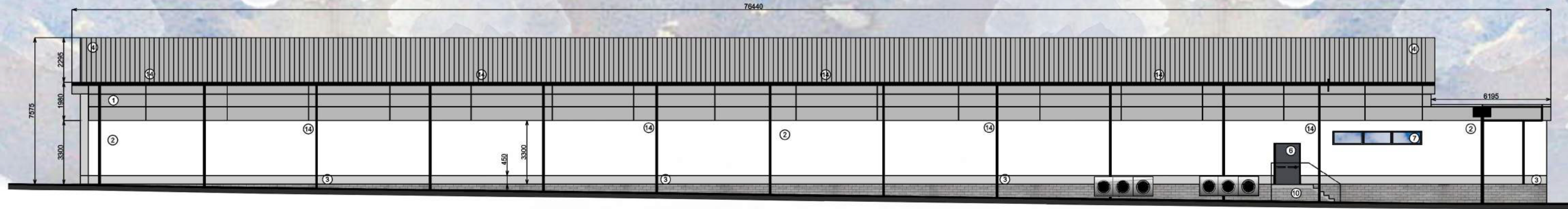
All drawings and specification to be read in conjunction with Structural Engineer and other consultants drawings; all discrepancies should be reported to the architect.

Figured dimensions only are to be taken from this drawing

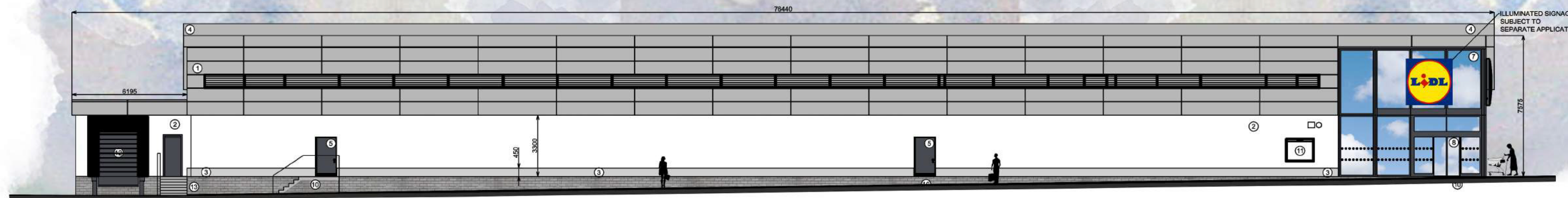
- Preliminary Comment Planning
- Tender Construction Record
- Legal

Drawing Revisi

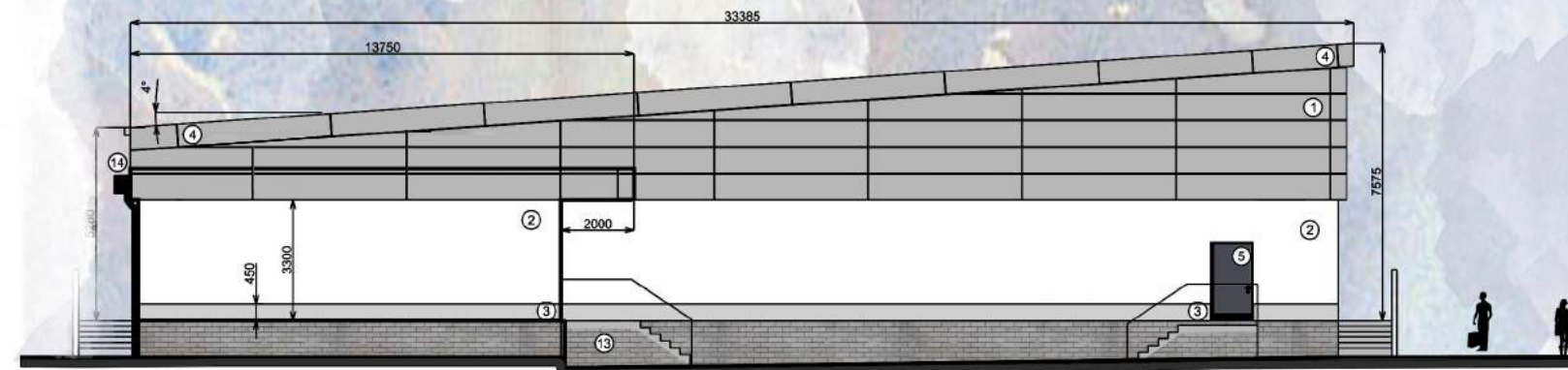
Rev	Description	Date
A	Gkazing to door RAL colour changed to 7024 Transome increased to 350mm Signage indicated (subject to separate app) Details of drivers stair included Details of guttering included Louver continued on north elevation	20/07/2015
B	Plant relocated to flat roof above delivery Bund wall on drivers stair extended Fire exit on south elevation altered to glazed door and opening made larger	30/07/2015
C	External steps added when site levels revised	11/08/2016
D	Plant relocated to ground level	02/09/2016



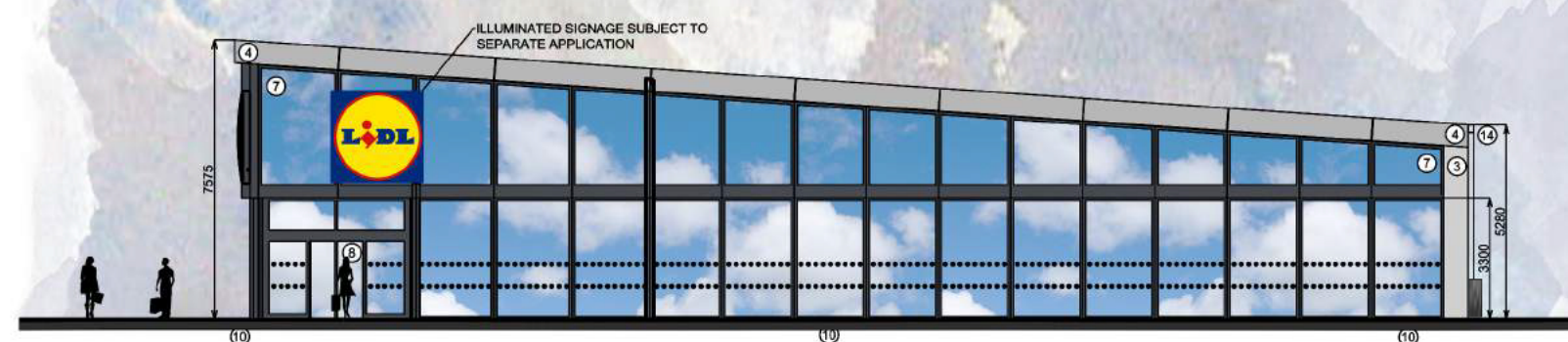
SOUTH ELEVATION



NORTH ELEVATION



EAST ELEVATION



WEST ELEVATION

- EXTERNAL FINISHES**
- ① ALUCOBOND PANEL CLADDING RAL 9006
 - ② WHITE RENDER RAL 9010
 - ③ AGATE GREY RENDER RAL 7038
 - ④ ALUMINIUM STANDING SEAM ROOF RAL 9006
 - ⑤ STEEL ESCAPE DOORS - POWDER COATED COLOUR GRAPHITE GREY (RAL 7024).
 - ⑥ GLAZED FIRE DOOR - FRAME POWDER COATED COLOUR GRAPHITE GREY (RAL 7024).
 - ⑦ WINDOWS - POLYESTER POWDER COATED ALUMINIUM (GRAPHITE GREY RAL 7024).
 - ⑧ ENTRANCE - POWDER COATED ALUMINIUM (GRAPHITE GREY RAL 7024).
 - ⑨ WRAP AROUND ALUMINIUM CHEQUER PLATE PROTECTION
 - ⑩ STAINLESS STEEL RAM RAID BOLLARDS 100MM Ø
 - ⑪ ILLUMINATED POSTER DISPLAY CASE
 - ⑫ SECTIONAL OVER HEAD DOOR (GRAPHITE GREY RAL 7024)
 - ⑬ 150MM THICK INSITU CONCRETE STAIR
 - ⑭ GUTTERS & DOWNPIPES TO BE COLOUR CODED TO MATCH ALUCOBOND CLADDING
- NOTE: MATERIALS USED WILL BE AS ABOVE OR SIMILAR APPROVED

CLIENT  Telford & Wrekin COUNCIL

PROJECT **Lidl Madeley Court Madeley, Telford**

TITLE **Proposed Elevations**

SCALE @ A2 **1:200** DATE **17/06/15**

DRAWING **165 - 30** REV **D**

DRAWN BY **LT** CHECKED BY **DW**

 **DESIGN DEVELOPMENT PARTNERSHIP**

ARCHITECTURE + PLANNING + PRINCIPAL DESIGNER

A: Reims House, 8 The Croft, Buntsford Drive, Bromsgrove, B60 4JE
T: 01527 571 765
F: 01527 878 207
E: mail@ddpdesign.co.uk
W: www.hintongroup.co.uk