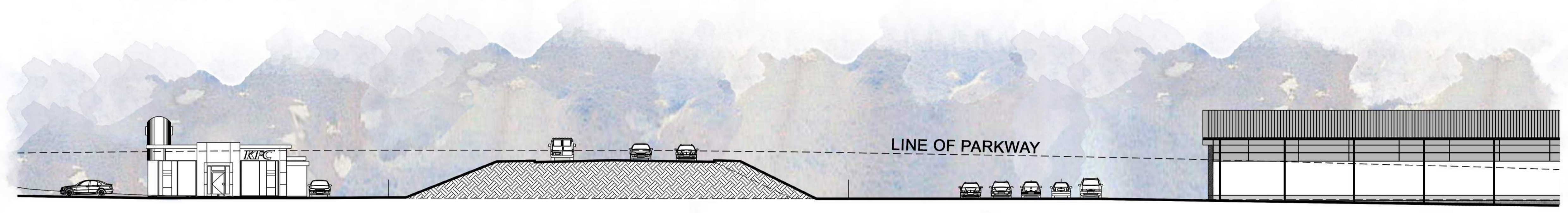
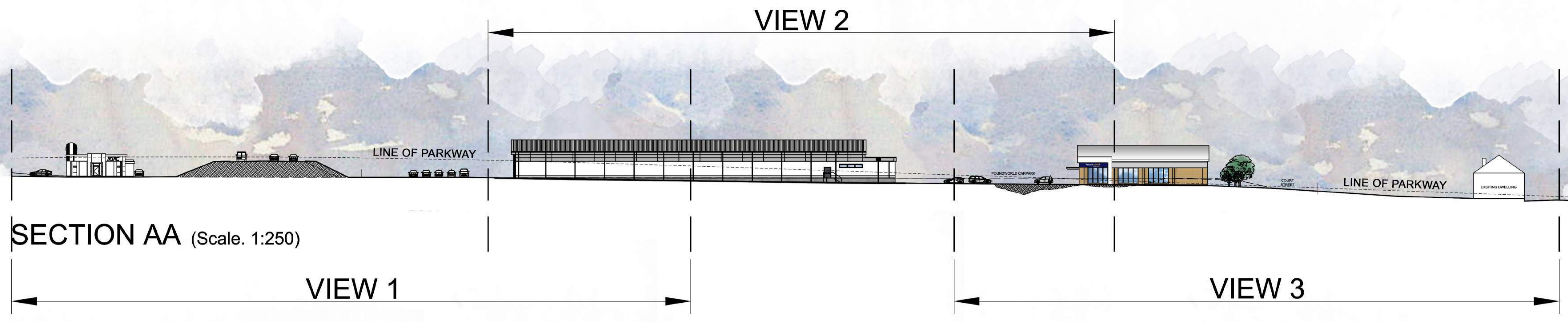


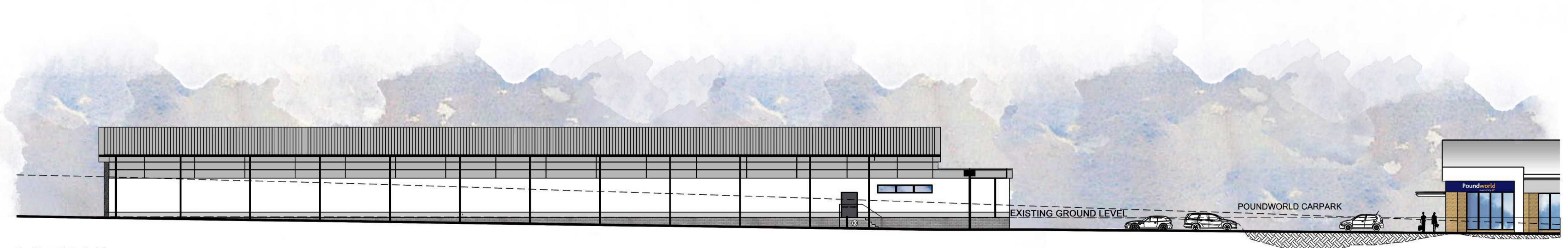
Figured dimensions only are to be taken from this drawing

- Preliminary     Comment     Planning
- Tender     Construction     Record
- Legal

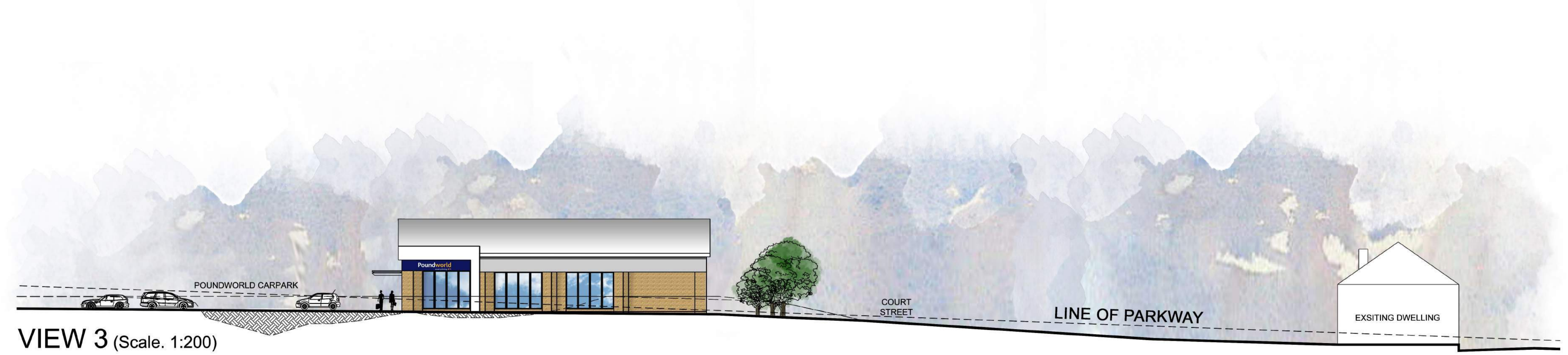
REVISIONS			
REV	DATE	DESCRIPTION	CHECKED BY
A	28/07/2016	PLANNING REVISIONS TO RETAIL UNITS	DW
B	11/08/2016	SITE LEVELS AMENDED	DW



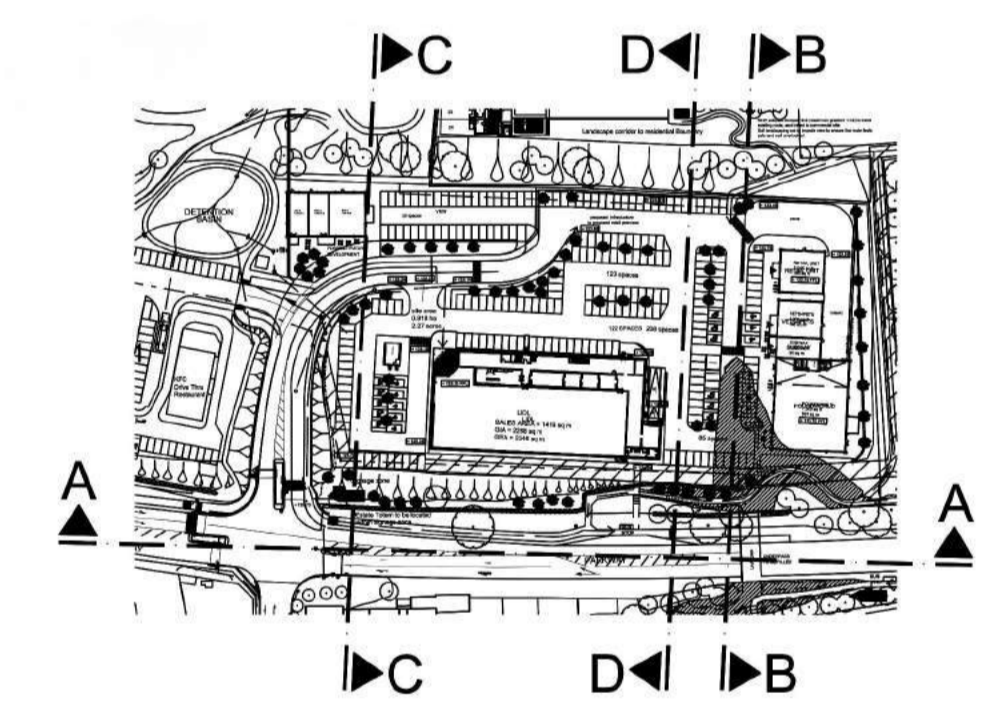
VIEW 1 (Scale: 1:200)



VIEW 2 (Scale: 1:200)



VIEW 3 (Scale: 1:200)



CLIENT Telford & Wrokin

PROJECT PHASE 2  
MADELEY COURT  
MADELEY, TELFORD

TITLE PROPOSED SITE SECTIONS  
(SHEET 1 OF 2)

SCALE @ A1 1:250, 1:200    DATE 23/02/2016

DRAWING 165 - 52    REV B

DRAWN BY KR    CHECKED BY DW



ARCHITECTURE + PLANNING + PRINCIPAL DESIGNER

A: Reims House, 8 The Croft, Buntford Drive, Bromsgrove, B60 4JE  
T: 01527 571 785  
E: mail@ddpdesign.co.uk  
W: www.himongroup.co.uk