



Telford & Wrekin Council Local Plan
Local Plan Policies Map Addendum
(for Schedule of Main Modification document)

November 2017

The Council must maintain an adopted policies map which illustrates geographically the application of the policies in the adopted development plan. The Inspector cannot recommend changes to the Policies Map, as this does not form a Development Plan Document. However, the Inspector published a number of Main Modifications to the Local Plan's policies which require corresponding changes to be made to the policies map. The Council has produced a schedule of the maps below to illustrate the changes arising from the Schedule of Main Modifications.

Related Proposed Main Modification	Map Number	Changes made
---	------------	--------------

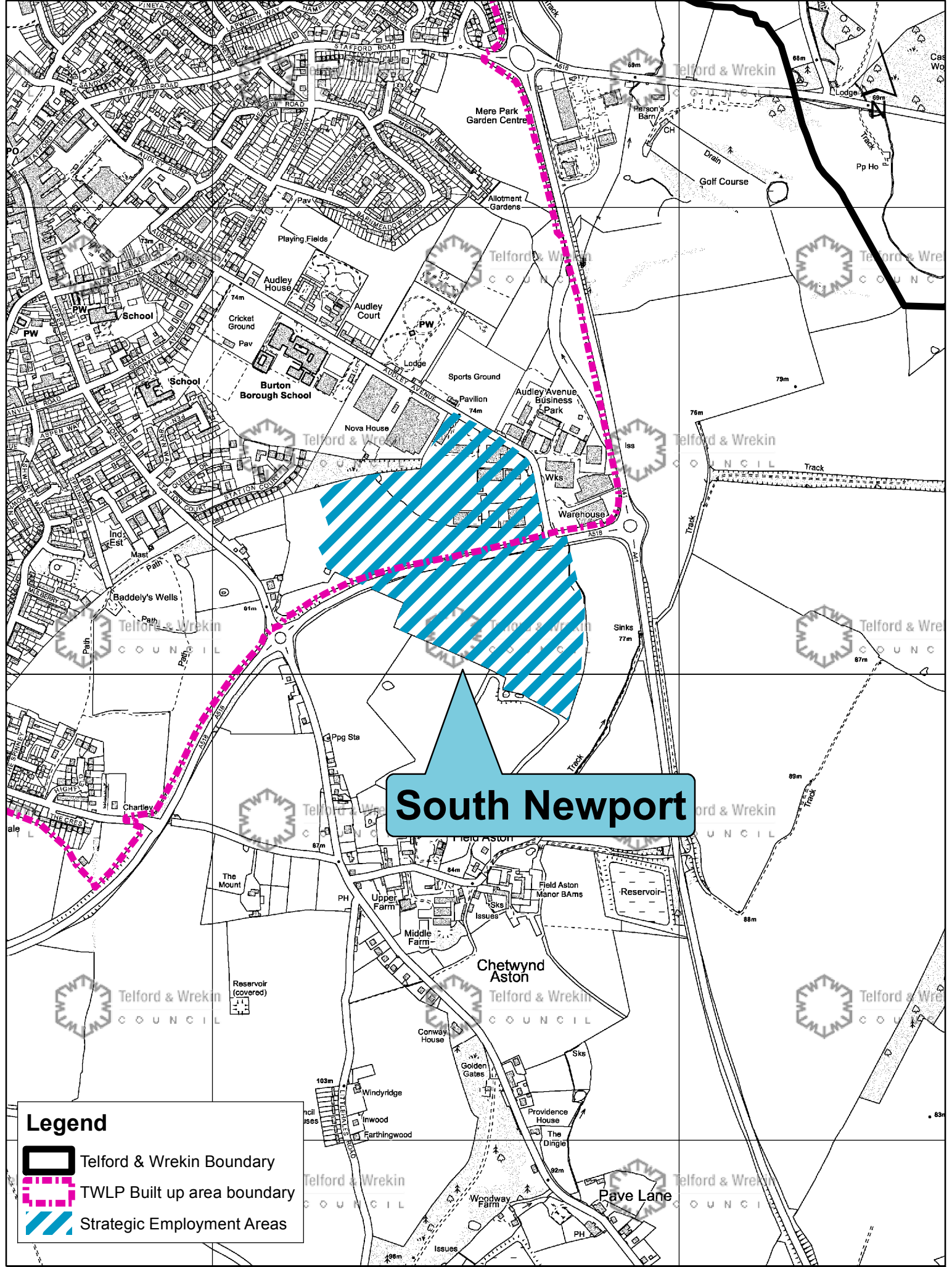
MM7	Map 1	Update Figure 5 Key Diagram to reflect the following modifications: <ul style="list-style-type: none">• Deletion of Lilleshall Village Strategic Landscape (MM62)• Deletion of H1 Sustainable Urban Extension (MM39)
MM18	Map 2	Make changes to Map 2 of the Local Plan to amend the boundaries of South Newport Strategic Employment Area to exclude land east of Audley Avenue
MM18	Map 3	Make changes to Local Plan Policies Map to amend the boundaries of South Newport Strategic Employment Area to exclude land east of Audley Avenue

Related Proposed Main Modification	Map Number	Changes made
---	------------	--------------

MM27	Map 4	Modify Map 3 of the Local Plan to include secondary shopping frontage.
MM27	Map 5	Modify Local Plan Policies Map to include secondary shopping frontage.
MM34	Map 6	Amend Local Plan Policies Map to show the Shrewsbury and Newport canal route
MM39 & MM92	Map 7	Amend the Local Policies Map to reflect the deletion of the following housing allocation sites: <ul style="list-style-type: none"> • H1 • H7 • H8 • H13
MM62	Map 8	Amend the Local Plan Policies Map Strategic Landscapes to show the following change: <ul style="list-style-type: none"> • Deletion of Lilleshall Village Strategic Landscape
MM75	Map 9	Amend the Local Plan Policies Map to modify Mineral Safeguarding Areas to include buffer zone areas.






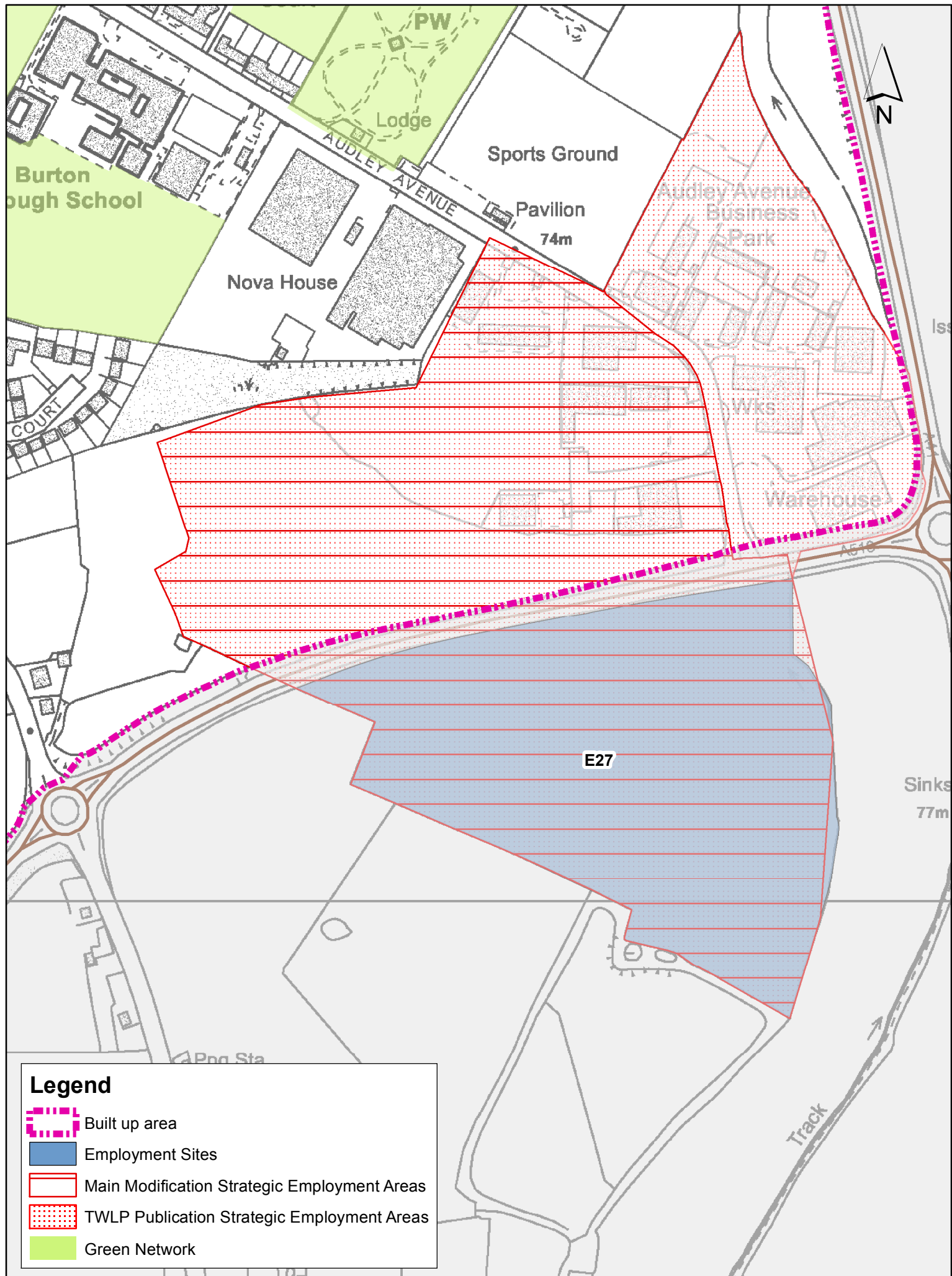
Map 1 - MM7: Update of Figure 5 key diagram to reflect main modifications

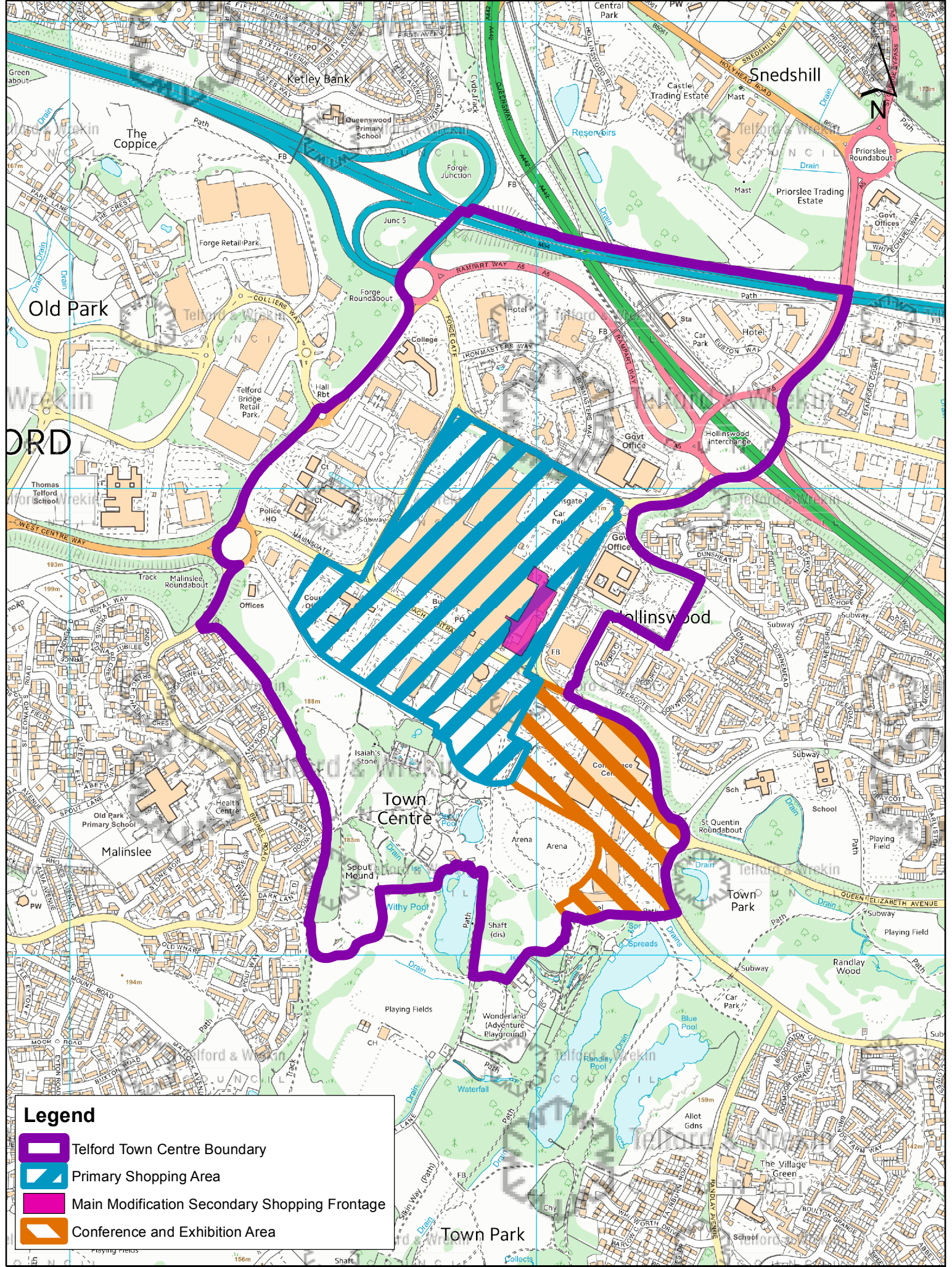


South Newport





Legend

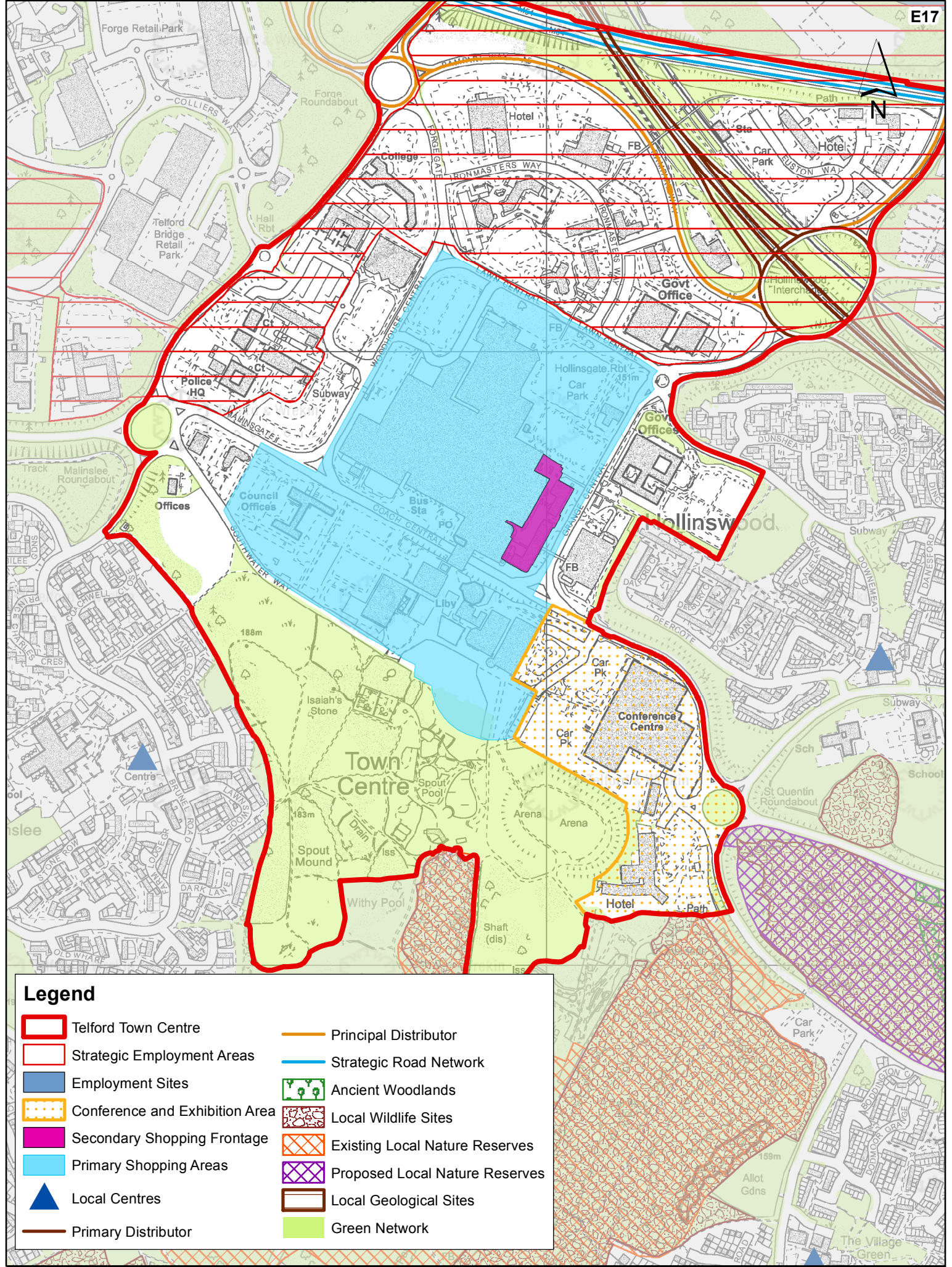
-  Telford & Wrekin Boundary
-  TWLP Built up area boundary
-  Strategic Employment Areas





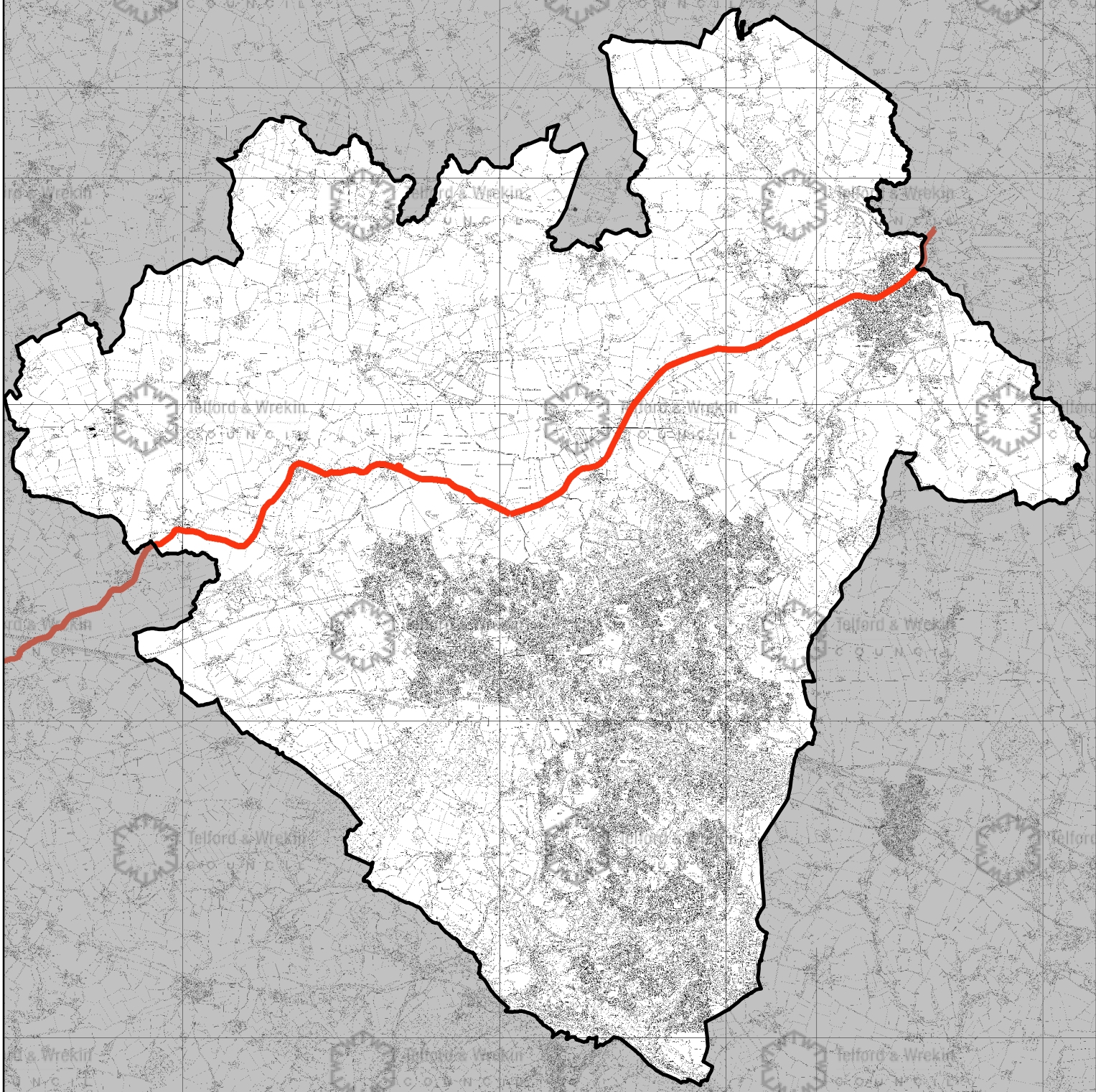
Legend

-  Telford Town Centre Boundary
-  Primary Shopping Area
-  Main Modification Secondary Shopping Frontage
-  Conference and Exhibition Area



Legend

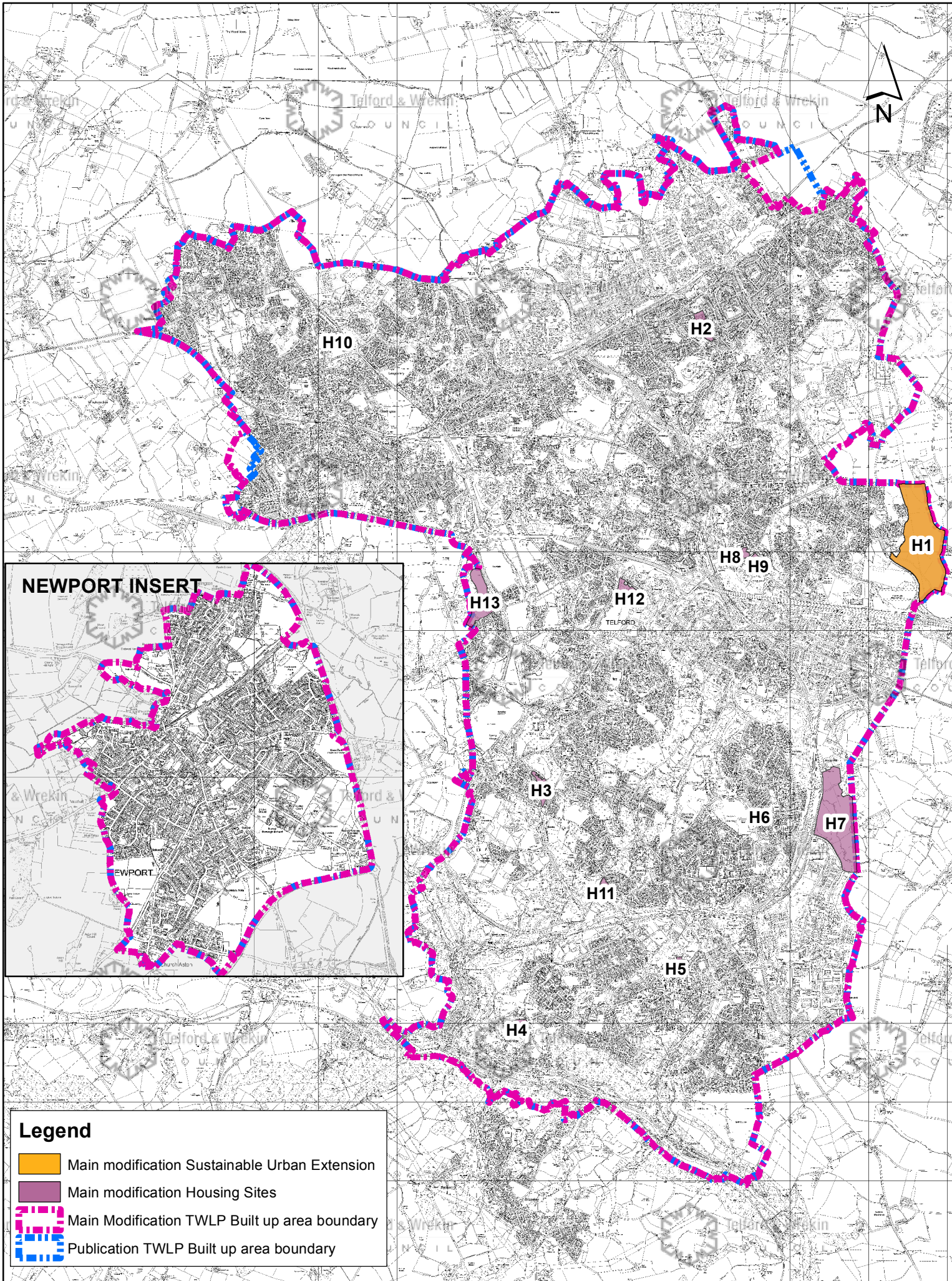
- Telford Town Centre
- Strategic Employment Areas
- Employment Sites
- Conference and Exhibition Area
- Secondary Shopping Frontage
- Primary Shopping Areas
- ▲ Local Centres
- Primary Distributor
- Principal Distributor
- Strategic Road Network
- Ancient Woodlands
- Local Wildlife Sites
- Existing Local Nature Reserves
- Proposed Local Nature Reserves
- Local Geological Sites
- Green Network

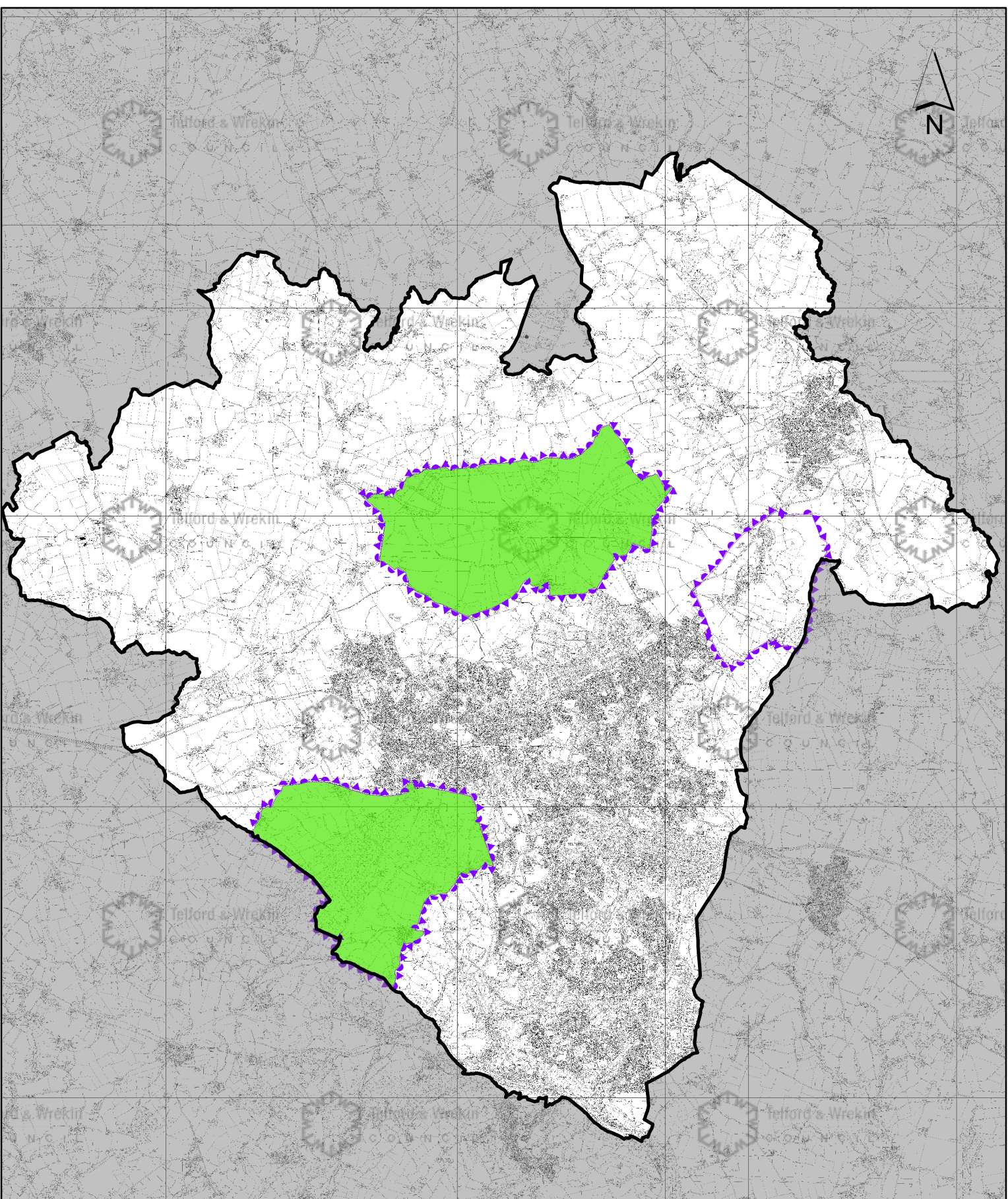


Legend




 TWC Boundary

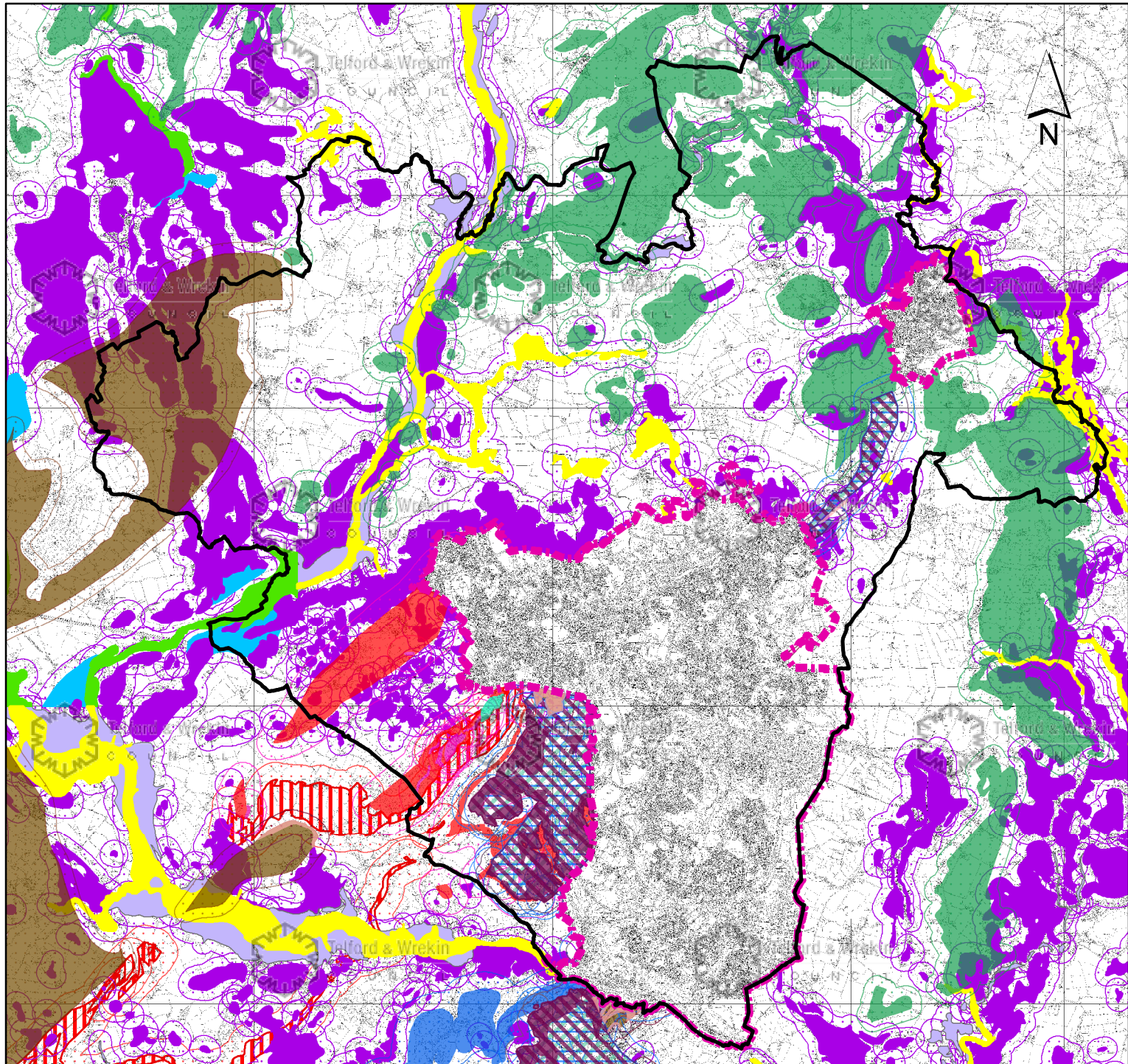
 Main Modification Shrewsbury & Newport Canal Route





Legend

-  TWC Boundary
-  Publication TWLP Strategic Landscapes
-  Main modification Strategic Landscape Areas



Legend

- | | |
|---|---|
| TWC Boundary | Limestone with interbedded mudstone: Silurian (and some Carboniferous) |
| TWLP Built up areas | Limestone Buffer Zone (400m) |
| Brick clay: Carboniferous, Coal Measures mudstones (coincident with shallow coal) | Bedrock sand and gravel: Triassic, Sherwood Sandstone |
| Brick clay: Carboniferous, Etruria Formation (principal brick clay resource) | Sand and Gravel Bedrock Buffer Zone (250m) |
| Brick Clay Buffer Zone (250m) | Glaciofluvial deposits |
| Primary opencast coal resource area | Glaciofluvial deposits - Concealed resources in area assessed by BGS |
| Secondary opencast coal resource area | River Terrace deposits |
| Coal Shallow Buffer Zone (400m) | Sub-alluvial River Terrace deposits - Indicated resources in area assessed by BGS |
| Tertiary opencast coal resource area | Sub-alluvial River Terrace deposits - Inferred resources |
| Tertiary opencast coal resource area Buffer Zone (250m) | Sand and Gravel Superficial Buffer Zone (250m) |
| Fireclay: Carboniferous, Coal Measures (coincident with shallow coal) | Sandstone: Cambrian, Ordovician Quartzites |
| Fireclay: Carboniferous, Coal Measures Buffer Zone (250m) | Sandstone: Cambrian, Ordovician Quartzites Buffer Zone (400m) |
| Extrusive (lavas, tuff and volcanic ash) | |
| Igneous intrusive, Dolerite | |
| Minor intrusives, Ercall granophyre | |
| Igneous Buffer Zone (400m) | |