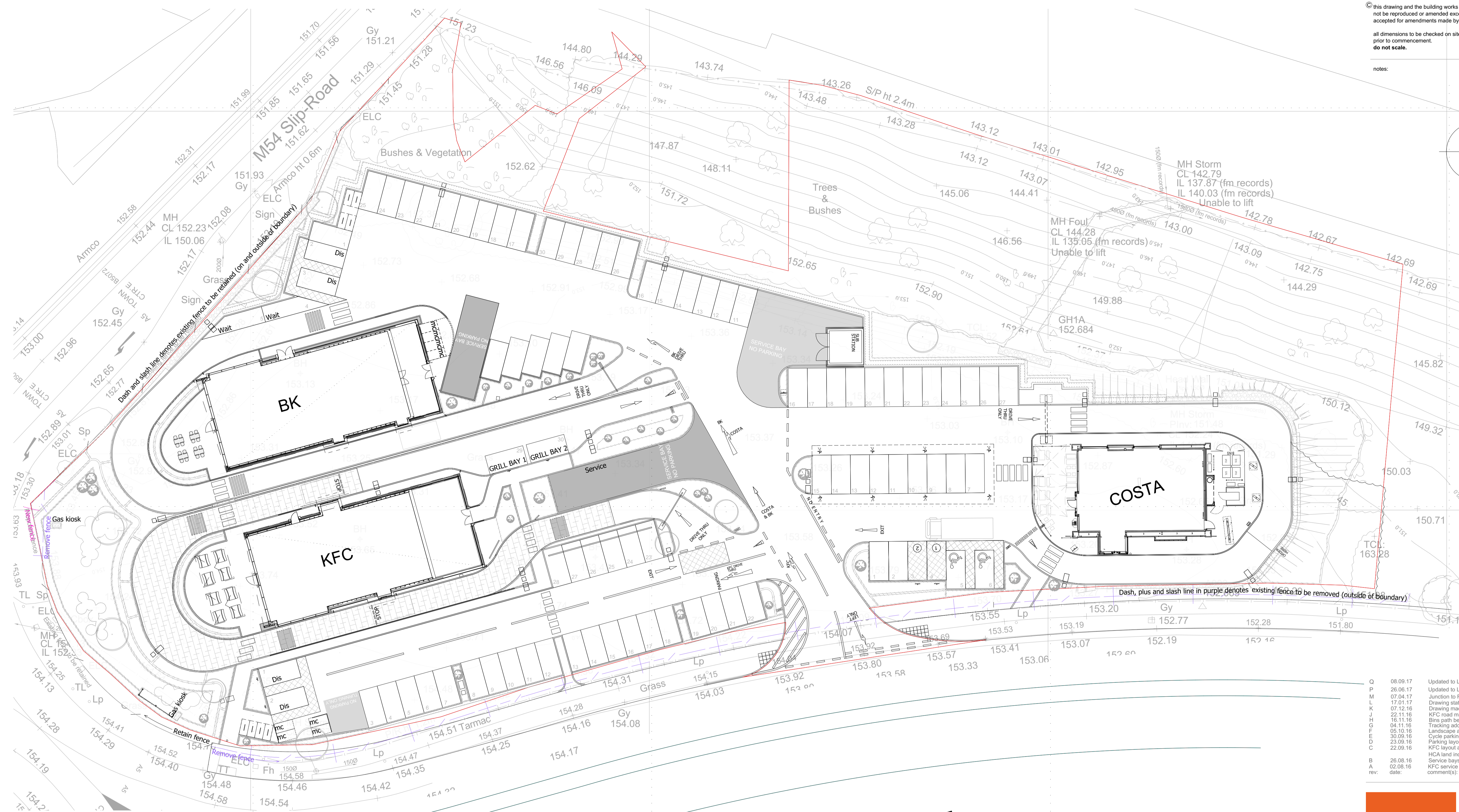
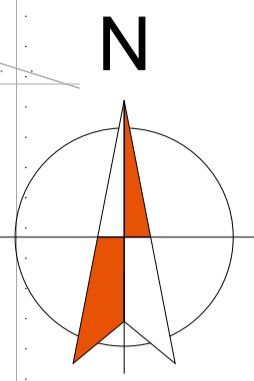


© this drawing and the building works depicted are the copyright of idp and may not be reproduced or amended except by written permission. no liability will be accepted for amendments made by other persons.

all dimensions to be checked on site and architect notified of any discrepancies prior to commencement.  
do not scale.

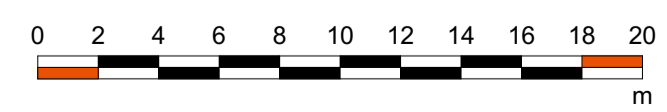
notes:



Q	08.09.17	Updated to LA validation comments	PES	PES
P	26.06.17	Updated to LA Transport comments	PES	PES
M	07.04.17	Junction to Rampart Way updated.	PES	PES
L	17.01.17	Drawing status updated to planning.	SOS	PES
K	07.12.16	Drawing made A1 and 1:250	PES	PES
H	22.11.16	KFC road markings amended	PES	PES
G	15.11.16	Bike path beside costa amended	PES	PES
F	04.11.16	Tracking added, BK cycles amended	PES	PES
E	05.10.16	Landscape added	PES	PES
D	30.09.16	Cycle parking to KFC amended	PES	PES
C	23.09.16	Parking layout coordinated	PES	PES
B	22.09.16	KFC layout amended	PES	PES
A	26.08.16	HCA land indicated in pink	PES	PES
rev:	02.08.16	Service bays amended	PES	PES
date:		KFC service turning bay added	PES	PES
		comment(s):	name:	check:



ELEVATION KEY PLAN



**IDP** ARCHITECTS.  
URBAN DESIGNERS.  
PLANNERS.  
PROJECT MANAGERS.  
LANDSCAPE ARCHITECTS.  
WE ARE IDP.

status: **PLANNING** RIBA Stage: **3**

client: Telford Commercial Ltd

job: Rampart Way, Telford

title: Proposed Site Plan

drawn: PES date: 25.05.16

checked: PES scale: @ 1: 1:250/500/@a3

job no: C2595 drg no: 000\_10 Rev Q