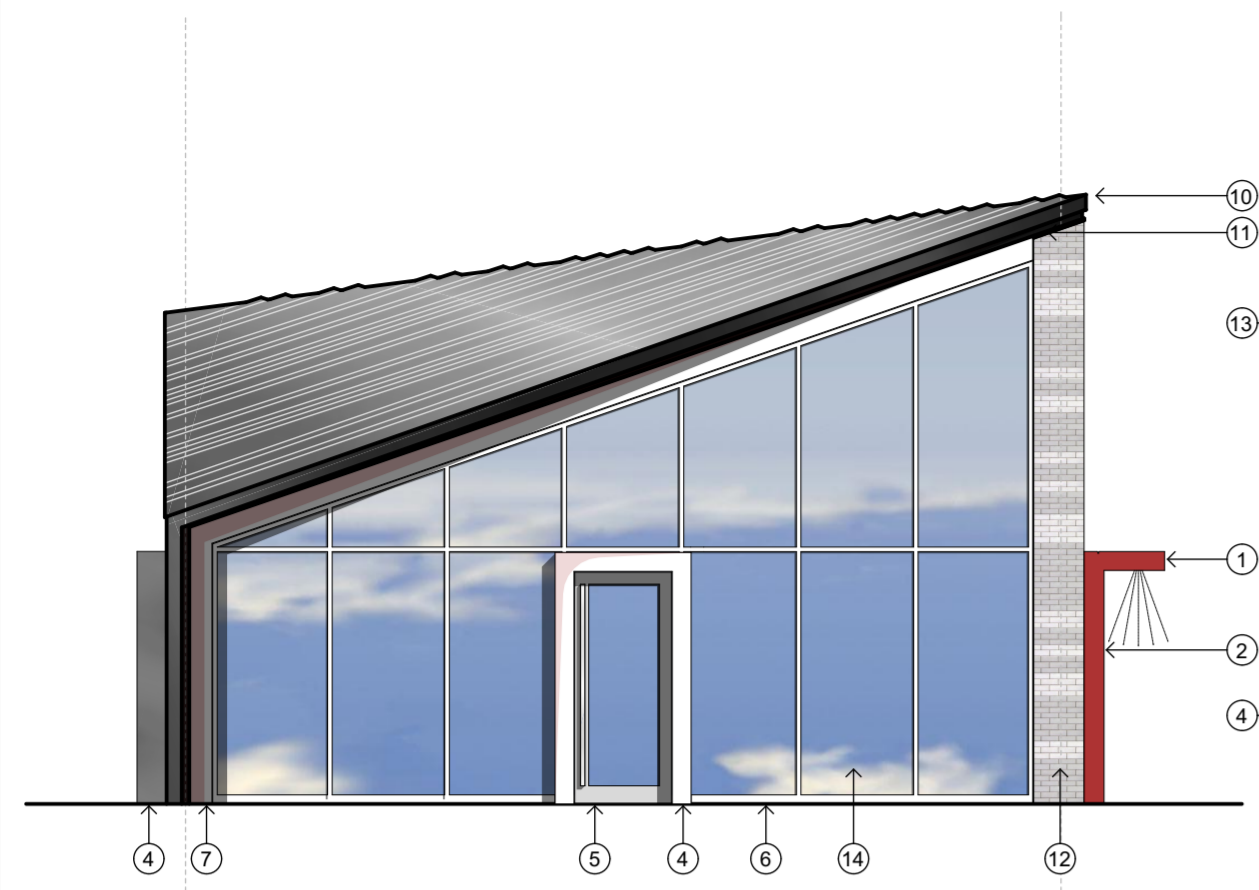


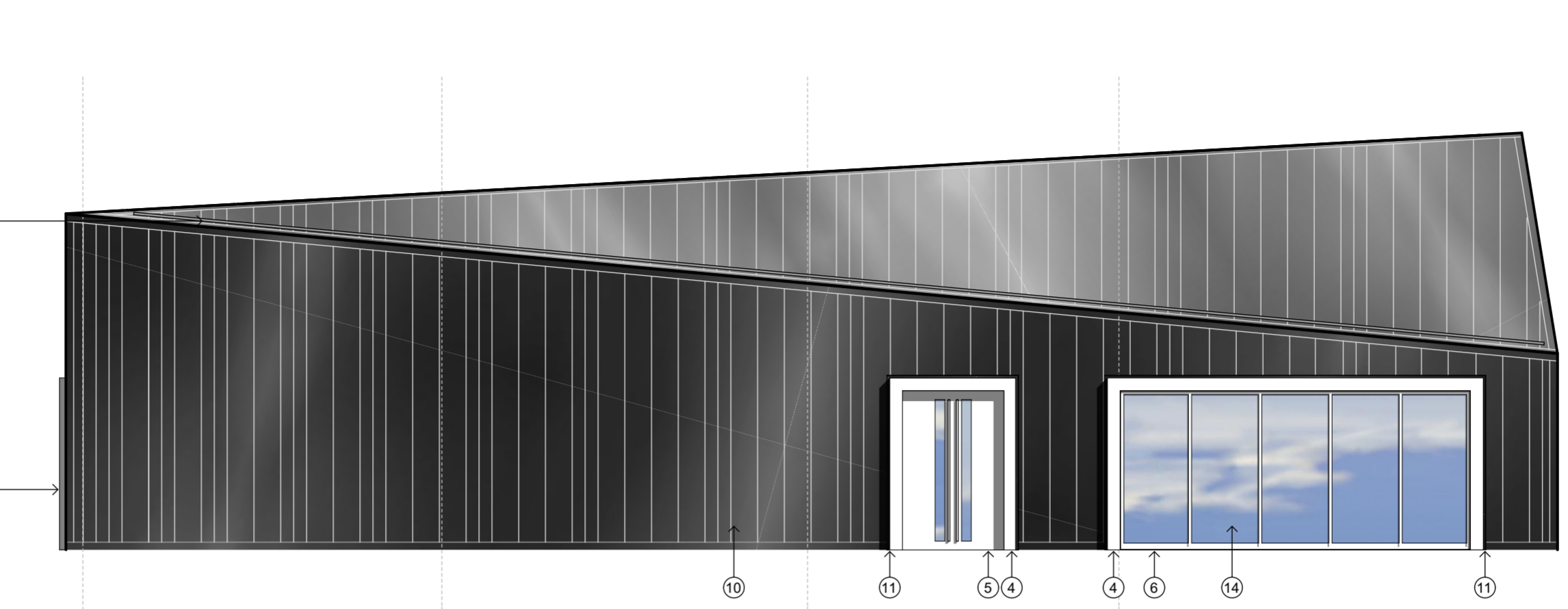
© this drawing and the building works depicted are the copyright of idp and may not be reproduced or amended except by written permission. no liability will be accepted for amendments made by other persons.

all dimensions to be checked on site and architect notified of any discrepancies prior to commencement. do not scale.

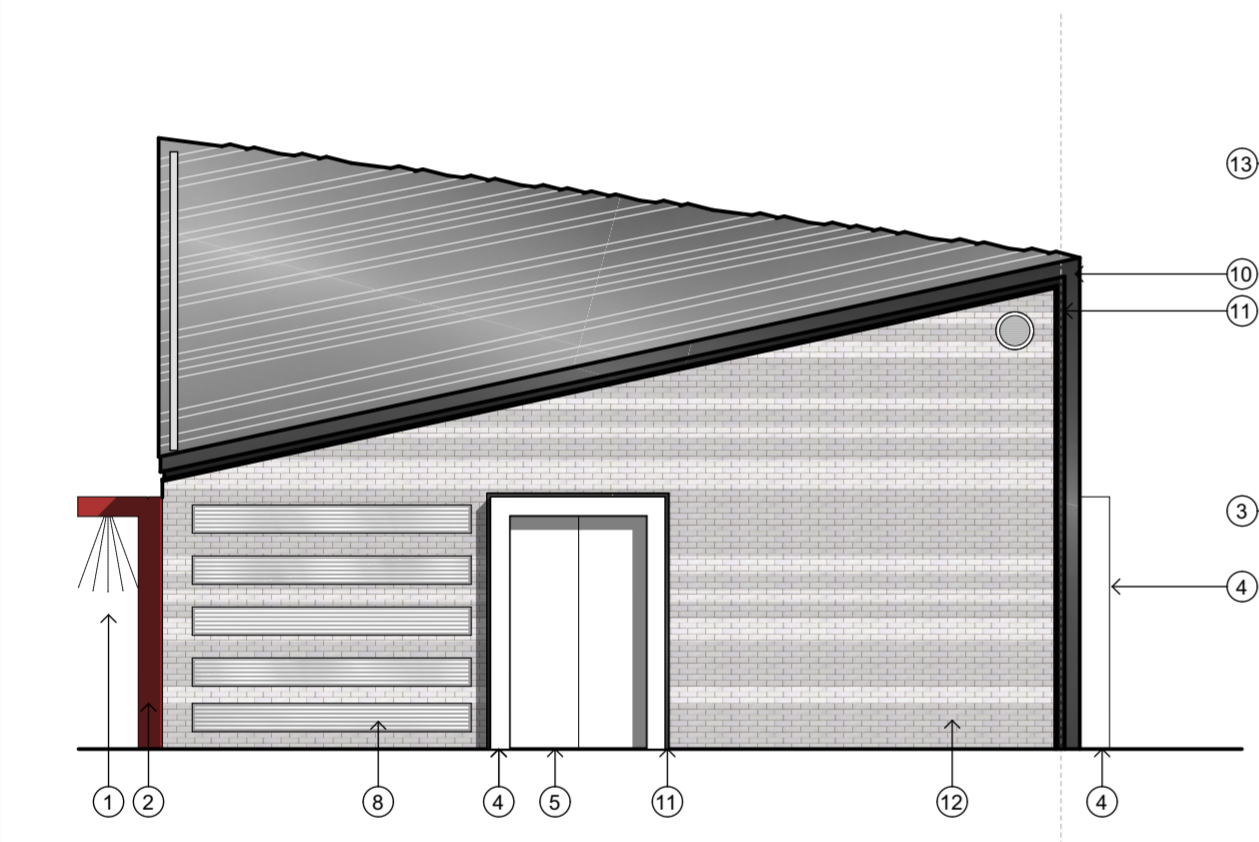
- notes:
- NB SIGNAGE SHOWN INDICATIVELY
 - ① LIT CANOPIES
 - ② RED PPC WINDOW PRESSINGS
 - ③ RED PPC SOFFIT PRESSINGS
 - ④ SILVER PPC WINDOW & DOOR SURROUNDS
 - ⑤ SILVER DOORS
 - ⑥ SILVER WINDOW FRAMES
 - ⑦ SILVER METAL PANELS
 - ⑧ GREY LOUVERS TO MATCH BRICKWORK
 - ⑨ RED PPC TO WINDOW PRESSINGS
 - ⑩ DARK PRESSED METAL OR STANDING SEAM ROOF
 - ⑪ DARK SHADOW GAPS
 - ⑫ SUBTLY BANDED BRICKWORK INCORPORATING FLUSH AND RECESSED MOTAR JOINTS
 - ⑬ CONCEALED GUTTER
 - ⑭ CLEAR GLASS



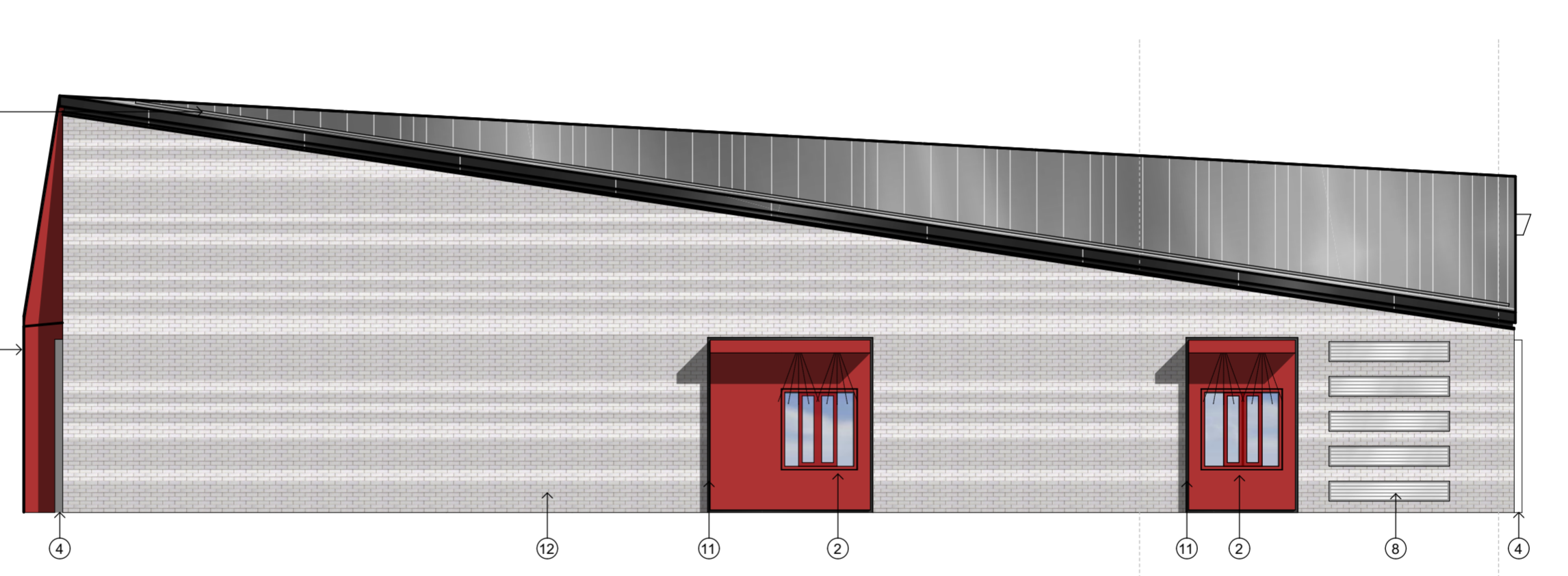
ELEVATION 1



ELEVATION 2



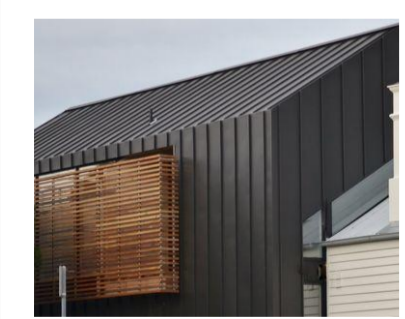
ELEVATION 3



ELEVATION 4

P3	07.12.17	DT window heights amended	PES	PES
P2	06.12.17	Signage removed	PES	PES
P1	05.12.17	Servery pods on elevation 4 extended down to ground	PES	PES
G	17.01.17	Drawing status updated to planning.	SOS	PES
F	13.12.16	Key added. Brickwork graphics, Roofline & DT signage amended	PES	PES
E	16.11.16	Red soffit removed on back and sides	PES	PES
D	30.09.16	Louvers in rear door removed signage amended	PES	PES
C	30.09.16	Louvers in rear door added	PES	PES
B	23.09.16	Brick colours amended PPC colours added to key and to order windows, brickwork colour amended, extract grill added	PES	PES
A	16.09.16		PES	PES
rev:	date:	comment(s):	name:	check:

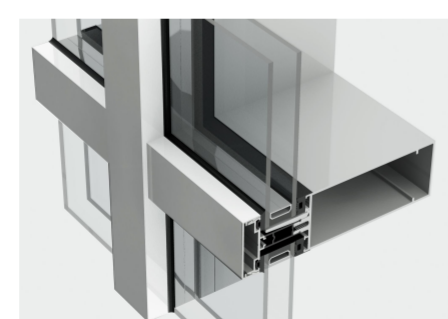
Dark grey metal roof & walls



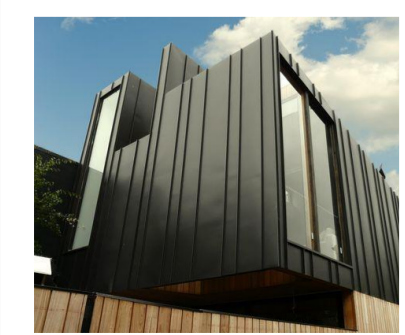
Banded light grey brickwork



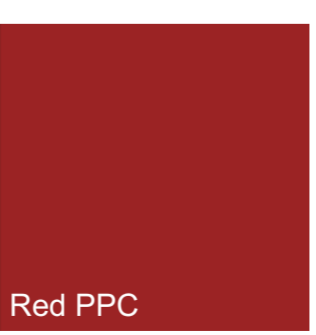
Silver door and window frames



Silver PPC



Silver window & door surrounds



Red PPC



Grey PPC



IDP ARCHITECTS.
URBAN DESIGNERS.
PLANNERS.
PROJECT MANAGERS.
LANDSCAPE ARCHITECTS.
WE ARE IDP.

status: **Planning** RIBA Stage: **3**

client: **Telford Commercial Ltd**

job: **Rampart Way, Telford**

title: **Elevations - BK**

drawn: **PES** date: **25.05.16**

checked: **PES** scale @ a2: **1:100**

job no: **C2595** drg no: **210_00 RevP3**

IDP GROUP 27 SPON STREET COVENTRY CV1 3BA
T: +44 (0)24 7652 7600 E: info@idpgroup.com
www.wearidp.com