

© this drawing and the building works depicted are the copyright of idp and may not be reproduced or amended except by written permission. no liability will be accepted for amendments made by other persons.

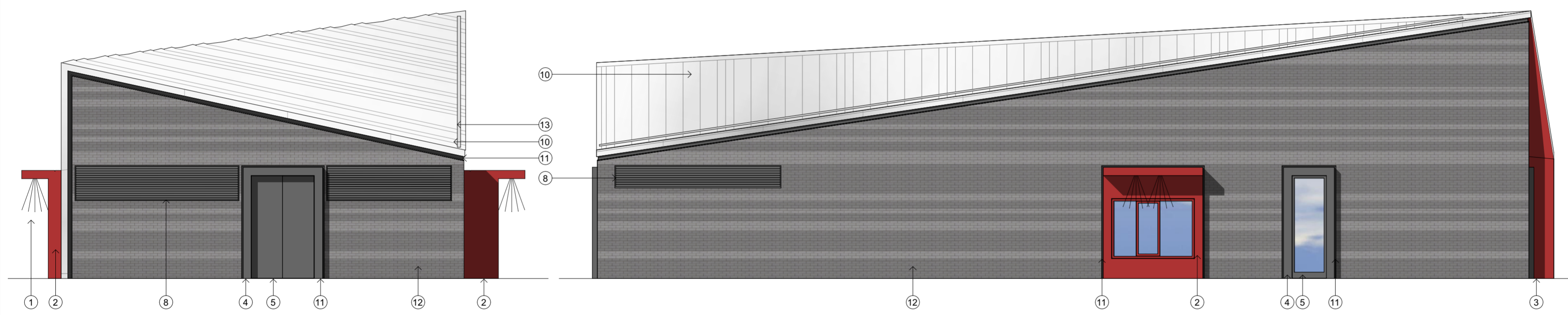
all dimensions to be checked on site and architect notified of any discrepancies prior to commencement.  
do not scale.

- notes:
- NB SIGNAGE SHOWN INDICATIVELY
  - ① LIT CANOPIES
  - ② RED PPC WINDOW PRESSINGS
  - ③ RED PPC SOFFIT PRESSINGS
  - ④ DARK GREY PPC WINDOW & DOOR SURROUNDS
  - ⑤ DARK GREY DOORS
  - ⑥ GREY WINDOW FRAMES
  - ⑦ DARK GREY METAL PANELS
  - ⑧ GREY LOUVRES TO MATCH BRICKWORK
  - ⑨ RED PPC TO WINDOW PRESSINGS
  - ⑩ SILVER PRESSED METAL OR STANDING SEAM ROOF
  - ⑪ DARK SHADOW GAPS
  - ⑫ SUBTLY BANDED BRICKWORK INCORPORATING FLUSH AND RECESSED MOTAR JOINTS
  - ⑬ CONCEALED GUTTER
  - ⑭ CLEAR GLASS
  - ⑮ SILVER LOUVERS TO MATCH METAL PANELS



ELEVATION 1

ELEVATION 2

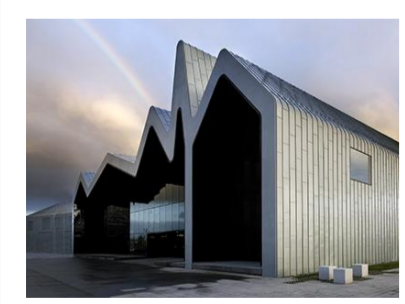


ELEVATION 3

ELEVATION 4

P4	06.12.17	Height of DT windows amended	PES	PES
P3	06.12.17	DT windows amended	PES	PES
P2	06.12.17	Signage removed	PES	PES
P1	05.12.17	Servery pod on elevation 2 extended down to ground	PES	PES
N	17.01.17	Drawing status updated to planning.	SOS	PES
M	05.01.17	Notes on materials added	PES	PES
L	23.12.16	SVP added	PES	PES
K	13.12.16	Brickwork graphics amended	PES	PES
J	22.11.16	Entrance door handle amended to red	PES	PES
H	15.11.16	Updated to KFC Comments	PES	PES
G	11.11.16	Updated to KFC Comments	PES	PES
F	25.10.16	Signage proposals	PES	PES
E	30.09.16	Louvers in rear door added	PES	PES
D	23.09.16	Canopies and lighting added over serving windows	PES	PES
C	16.09.16	Signage added, PPC colours and order windows location amended, brickwork colour amended, extract and ventilation grills amended	PES	PES
B	26.07.16	Brickwork colour changed	PES	PES
A	12.07.16	Elevation updated	PES	PES
rev:	date:	comment(s):	name:	check:

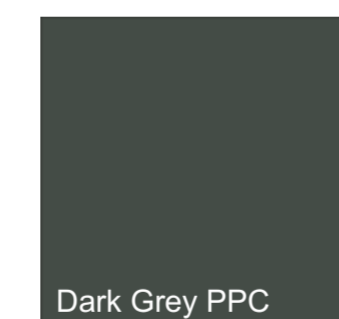
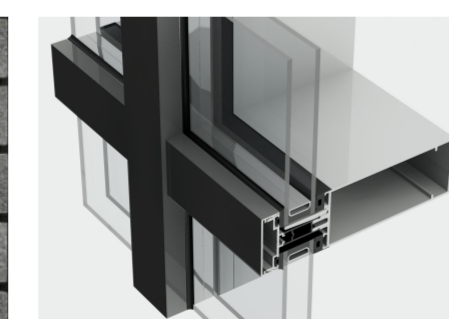
Silver metal roof and walls



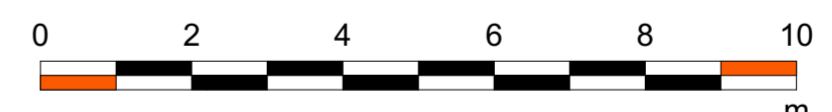
Banded dark grey brickwork



Curtain walling



Window/door surrounds & frames



**IDP** ARCHITECTS.  
URBAN DESIGNERS.  
PLANNERS.  
PROJECT MANAGERS.  
LANDSCAPE ARCHITECTS.  
WE ARE IDP.

status: **Planning** RIBA Stage: **3**

client: **Telford Commercial Ltd**

job: **Rampart Way, Telford**

title: **Elevations - KFC**

drawn: **PES** date: **25.05.16**

checked: **PES** scale @ a2: **1:100**

job no: **C2595** drg no: **200\_00 RevP4**

IDP GROUP 27 SPON STREET COVENTRY CV1 3BA  
T: +44 (0)24 7652 7600 E: info@idpgroup.com  
www.wearidp.com