

© this drawing and the building works depicted are the copyright of idp and may not be reproduced or amended except by written permission. no liability will be accepted for amendments made by other persons.

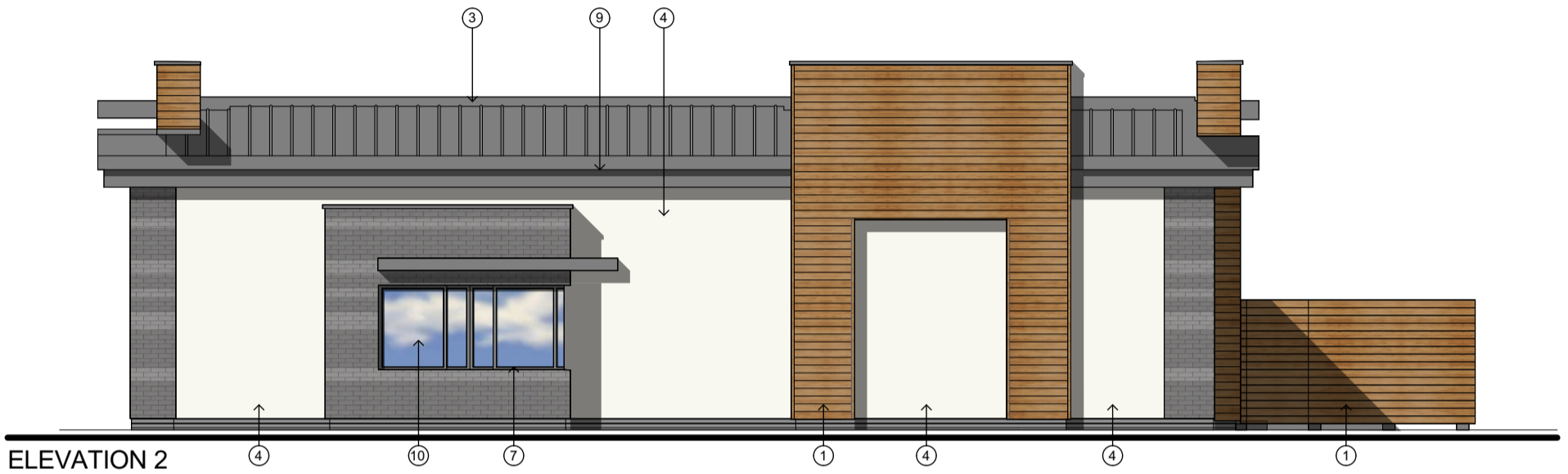
all dimensions to be checked on site and architect notified of any discrepancies prior to commencement.  
do not scale.

notes:

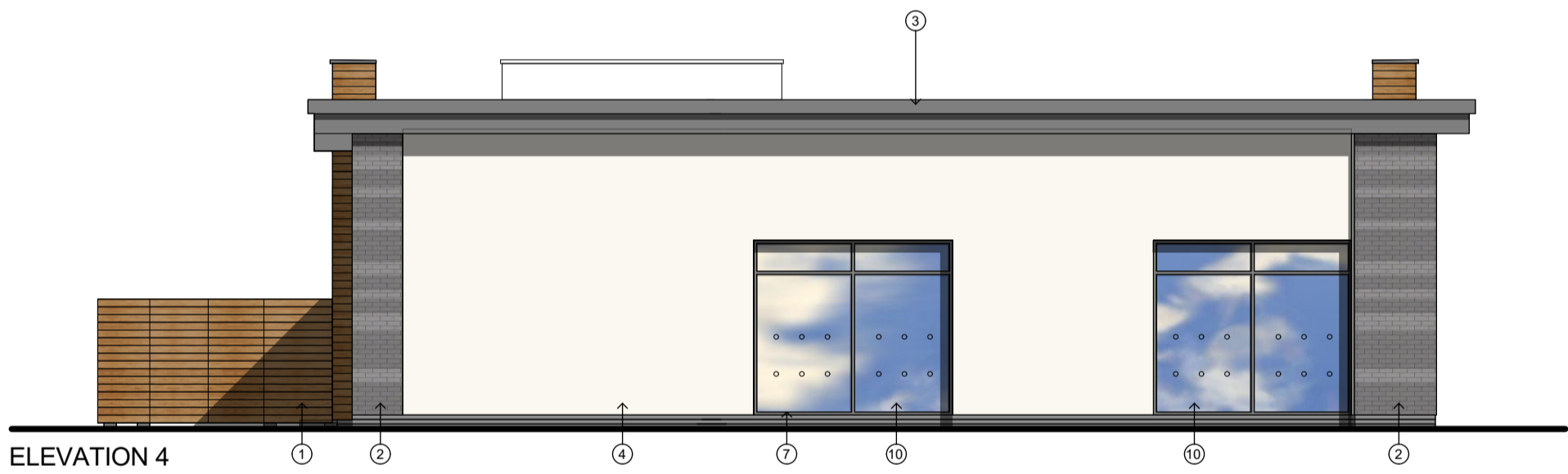
- ① TIMBER CLADDING
- ② SUBTLY BANDED BRICKWORK INCORPORATING FLUSH AND RECESSED MOTAR JOINTS
- ③ DARK METAL ROOF
- ④ WHITE RENDER PANELS
- ⑥ GLAZED DOOR
- ⑦ GREY WINDOW & DOOR FRAMES
- ⑧ GREY LOUVERS
- ⑨ CONCEALED GUTTER
- ⑩ CLEAR GLASS
- ⑪ GREY DOOR



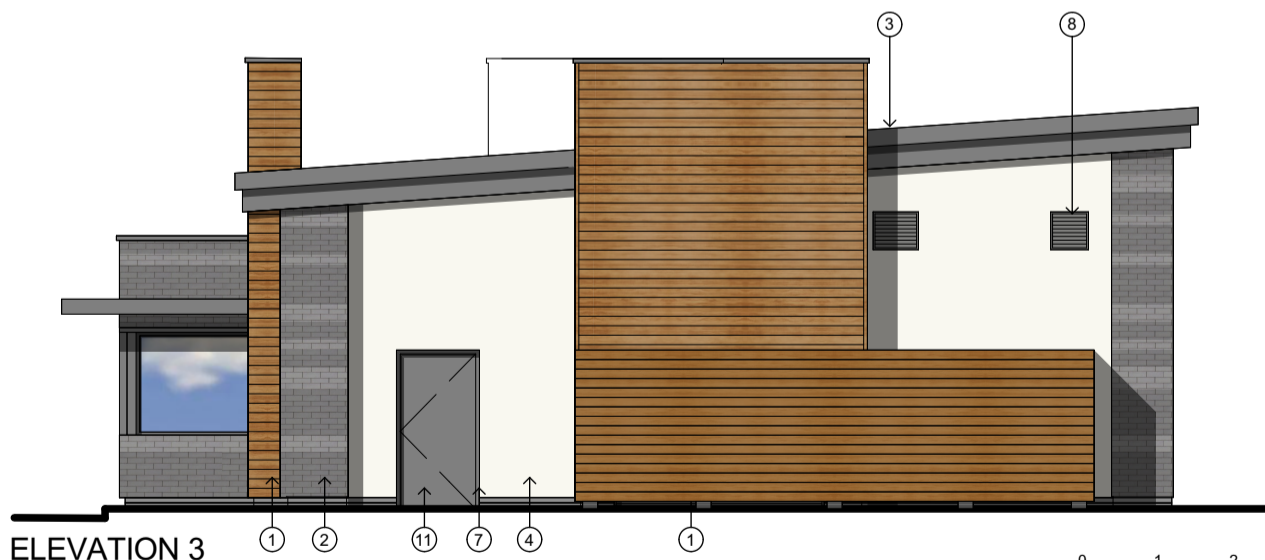
ELEVATION 1



ELEVATION 2



ELEVATION 4



ELEVATION 3

P1	06.12.17	Signage removed	PES	PES
H	17.01.17	Drawing status updated to planning.	SOS	PES
G	05.01.17	Notes on materials added	PES	PES
F	20.12.16	Entrance portal shown on back & sides	PES	PES
E	20.12.16	Costa entrance ele signage amended	PES	PES
D	24.11.16	Costa entrance ele signage amended	PES	PES
C	16.11.16	Elevations 2 & 4 amended	PES	PES
B	25.10.16	Brickwork and timber coordinated	PES	PES
A	06.10.16	Rear signage added	PES	PES
rev:	date:	comment(s):	name:	check:

**IDP** ARCHITECTS.  
URBAN DESIGNERS.  
PLANNERS.  
PROJECT MANAGERS.  
LANDSCAPE ARCHITECTS.  
WE ARE IDP.

status: **Planning** RIBA Stage:

client: **Telford Commercial Ltd**

job: **Rampart Way, Telford**

title: **Elevations - Costa**

drawn: **PES** date: **25.05.16**

checked: **PES** scale @ a3: **1:100**  
**220\_00 Rev**

job no: **C2595** drg no: **P1**

**IDP GROUP** 27 SPON STREET COVENTRY CV1 3BA

T: **+44 (0)24 7652 7600** E: **info@idpgroup.com**

[www.weareidp.com](http://www.weareidp.com)

