

© this drawing and the building works depicted are the copyright of idp and may not be reproduced or amended except by written permission. no liability will be accepted for amendments made by other persons.

all dimensions to be checked on site and landscape architect notified of any discrepancies prior to commencement.

**do not scale.**

- notes:
- KEY**
- Site Boundary
  - Existing vegetation to be retained & protected (in accordance with BS5837:2012)
  - Proposed tree (refer to schedule for species & specification)
  - Specified shrub planting (refer to schedule for species & specification)
  - Native shrub planting (refer to schedule for species & specification)
  - Selected feature shrubs (refer to schedule for species & specification)
  - Hedgerow (refer to schedule for species & specification)

To be read in conjunction with Architect's drawing C2595-000\_10-Proposed site plan and Engineer's drawing 13-5714-001-P3 GA External levels.

For tree retention and removals refer to Arboriculturist's drawings

**PLANTING NOTES**

1. All planting and operations should comply with BS 4428 'General Landscape Operations'. All plants shall be supplied in accordance with the HTA National Plant Specification and their certified nurseries.
2. Planting outside the usual October-March growing season shall be pursued by approval only. If agreed all bare root plants shall be substituted with container grown stock.
3. Topsoil depths to comply with occupier specifications for landscaping. The minimum topsoil depths for shrub/grass areas should be 300mm and not exceed 450mm. Suitable (loosened) subsoil should provide the remainder of the minimum rooting depths. The minimum rooting depths should be as follows:
  - 600mm for shrubs and native hedgerows (minimum 300mm of topsoil)
  - Tree pits excavations should be at least twice the diameter of the root spread and 1.5 times the depth of the roots to be planted.
4. Specification of species, position and density shall be in accordance with drawing and planting schedule provided, and should not be amended without prior approval of the Landscape Architect. For detailed landscape specification information, please refer to the relevant documentation.
5. All foundation designs provided by the architect/engineer must take into account the effect of existing trees, and the proposed landscape scheme, and any conflicts made known to the Landscape Architect for necessary changes.
6. The contractor is responsible for checking locations of all existing and proposed services, and shall advise the Landscape Architect if there are any conflicts.
7. All existing trees and hedges shall be protected in accordance with BS5837 for the duration of the construction period.
8. Management operations for the site shall be carried out in accordance with the agreed 'Landscape Management Plan'.
9. Maintenance of any gabions or structures that form a boundary to the highway should be maintained from within the site, through use of chemical sprays or similar means, to ensure that maintenance operations take place without encroachment onto highway land.

F	07.12.17	Amendment to Planting Notes	GC
E	11.10.17	Additional planting following LPA comments	CR
D	21.6.17	Updated to revised layout	CR
C	19.4.17	Junction updated	CR
B	20.1.17	Fences added	CR
A	18.1.17	Hedge specs amended	KC
A	18.1.17	Amendments to boundary	KC

rev: date: comment(s): name: check:

**IDP ARCHITECTS.**  
**URBAN DESIGNERS.**  
**PLANNERS.**  
**PROJECT MANAGERS.**  
**LANDSCAPE ARCHITECTS.**  
**WE ARE IDP.**

**IDP LANDSCAPE**

client: **Telford Commercial Ltd**

job: **Rampart Way, Telford**

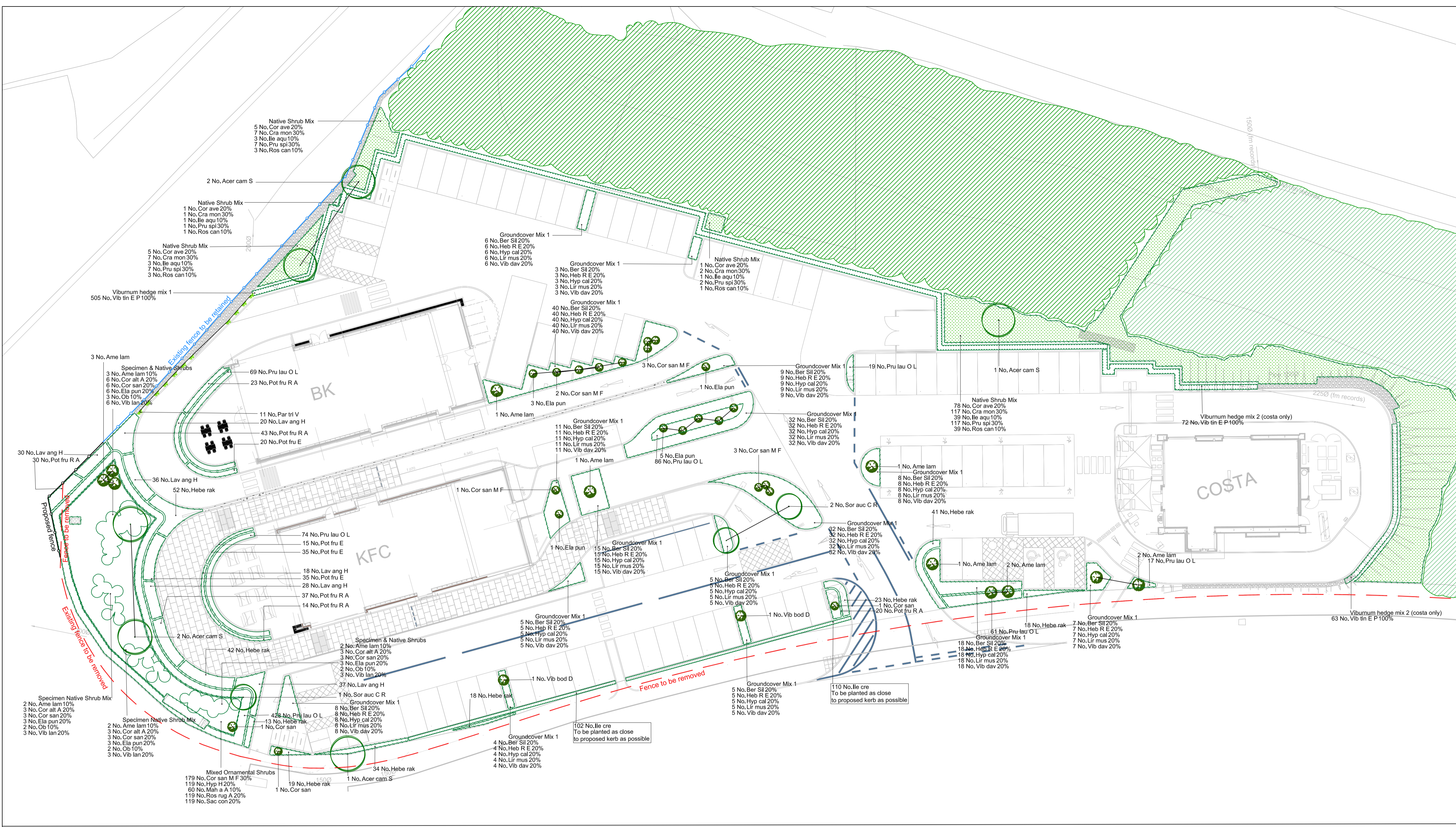
title: **Planting Plan**

drawn: **ND** date: **December 2017**

checked: **KC** scale @ **1:1250**

job no: **LA3028** drg no: **001 Rev E**

IDP GROUP 27 SPON STREET COVENTRY CV1 3BA  
 T: +44 (0)24 7652 7600 E: info@idpgroup.com  
[www.wearidp.com](http://www.wearidp.com)



**Planting Schedule**

Times	Number	Abbreviation	Species	Specification	Height	Girth	Density
	6 No.	Acer cam S	Acer campestre 'Streetwise'	Standard Clear Stem min. 200 :C	3.5-4.0m	12-14cm	Counted
	3 No.	Sor auc C R	Sorbus aucuparia 'Cardinal Royal'	Heavy Standard Clear Stem min. 200 :C	3.5-4.0m	12-14cm	Counted

Shrubs	Number	Abbreviation	Species	Specification	Height	Pot Size	Density
	11 No.	Ame lam	Amelanchier lamarckii	Branched 3 brks :C	60-80cm	5L	Counted
	3 No.	Cor san	Cornus sanguinea	Bushy :C	60-80cm	5L	Counted
	9 No.	Cor san M F	Cornus sanguinea 'Midwinter Fire'	Bushy :C	40-60cm	3L	Counted
	10 No.	Ela pun	Elaeagnus pungens	Bushy :C	40-60cm	3L	Counted
	189 No.	Hebe rak	Hebe rakaiensis	Bushy :C	30-40cm	2L	4/m <sup>2</sup>
	71 No.	Hebe rak	Hebe rakaiensis	Bushy :C	30-40cm	2L	5/m <sup>2</sup>
	212 No.	Ile cre	Ilex crenata	Bushy :C	40-60cm	5L	4/m
	169 No.	Lav ang H	Lavandula angustifolia 'Hidcote'	Bushy :C	20-30cm	2L	4/m <sup>2</sup>
	105 No.	Pot fru E	Potentilla fruticosa 'Elizabeth'	Bushy :C	30-40cm	2L	4/m <sup>2</sup>
	167 No.	Pot fru R A	Potentilla fruticosa 'Red Ace'	Bushy :C	30-40cm	2L	4/m <sup>2</sup>
	754 No.	Pru lau O L	Prunus laurocerasus 'Otto Luyken'	Bushy :C	40-60cm	3L	5/m <sup>2</sup>
	2 No.	Vib bod D	Viburnum bodnantense 'Dawn'	Branched: 6 brks: C	125-150cm	25L	Counted

Climbers	Number	Abbreviation	Species	Specification	Height	Pot Size	Density
	11 No.	Par tri v	Parthenocissus tricuspidata 'Veitchii'	several shoots: 5 breaks :C	150-200cm	10L	Counted

Groundcover	Number	Abbreviation	Species	Specification	Height	Pot Size	Density
	208 No.	Ber Sil	Bergenia 'Silberlicht'	C	2L	4/m <sup>2</sup>	
	208 No.	Heb R E	Hebe Red Edge	C	30-40cm	2L	4/m <sup>2</sup>
	208 No.	Hyp cal	Hypericum calycinum	C	30-40cm	2L	4/m <sup>2</sup>
	208 No.	Lir mus	Liriodendron muscari	C	2L	4/m <sup>2</sup>	
	208 No.	Vib dav	Viburnum davidii	C	30-40cm	2L	4/m <sup>2</sup>

Mixed Ornamental Shrubs	Number	Abbreviation	Species	Specification	Height	Pot Size	Density
	179 No.	Cor san M F	Cornus sanguinea 'Midwinter Fire'	Bushy :C	40-60cm	3L	3/m <sup>2</sup>
	119 No.	Hyp H	Hypericum 'Hidcote'	Bushy :C	40-60cm	3L	3/m <sup>2</sup>
	60 No.	Mah a A	Mahonia aquifolium 'Apoll'	Bushy :C	40-60cm	3L	3/m <sup>2</sup>
	119 No.	Ros rug A	Rosa rugosa 'Alba'	Bushy :C	40-60cm	3L	3/m <sup>2</sup>
	119 No.	Sac con	Sarcococca confusa	Bushy :C	40-60cm	3L	3/m <sup>2</sup>

Specimen & Native Shrub Mix	Number	Abbreviation	Species	Specification	Height	Pot Size	Density
	9 No.	Ame lam	Amelanchier lamarckii	Bushy :C	60-80cm	5L	1/m <sup>2</sup>
	15 No.	Cor alt A	Cornus alternifolia 'Argentea'	Bushy :C	40-60cm	3L	1/m <sup>2</sup>
	15 No.	Cor san	Cornus sanguinea	Bushy :C	40-60cm	3L	1/m <sup>2</sup>
	15 No.	Ela pun	Elaeagnus pungens	Bushy :C	40-60cm	3L	1/m <sup>2</sup>
	9 No.	Ob	Osmantbus burkwoodii	Bushy :C	40-60cm	3L	1/m <sup>2</sup>
	15 No.	Vib lan	Viburnum lantana	Bushy :C	40-60cm	3L	1/m <sup>2</sup>

Native Shrub Mix	Number	Abbreviation	Species	Specification	Height	Pot Size	Density
	90 No.	Cor ave	Corylus avellana	Bushy :BR	60-80cm	1/m <sup>2</sup>	
	134 No.	Cra mon	Crataegus monogyna	Bushy :BR	60-80cm	1/m <sup>2</sup>	
	47 No.	Ile agu	Ilex aquifolium	Bushy :C	40-60cm	2L	1/m <sup>2</sup>
	134 No.	Pru spl	Prunus spinosa	Bushy :BR	60-80cm	1/m <sup>2</sup>	
	47 No.	Ros can	Rosa canina	Bushy :BR	60-80cm	1/m <sup>2</sup>	

Viburnum hedge mix 1	Number	Abbreviation	Species	Specification	Height	Pot Size	Density
	505 No.	Vib tin E P	Viburnum tinus 'Eve Price'	Bushy :C	60-80cm	5L	4/m

Viburnum hedge mix 2 (outside Costa only)	Number	Abbreviation	Species	Specification	Height	Pot Size	Density
	135 No.	Vib tin E P	Viburnum tinus 'Eve Price'	Half standard: 400mm clear stem :C	80-100cm	5-7.5L	3/m

