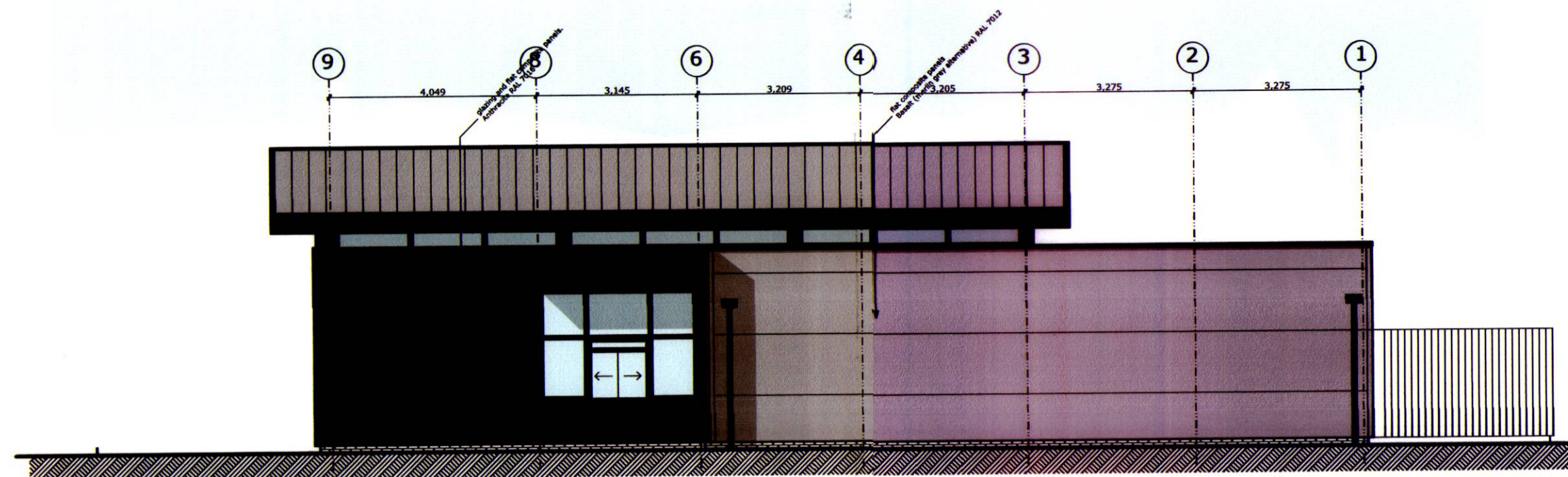
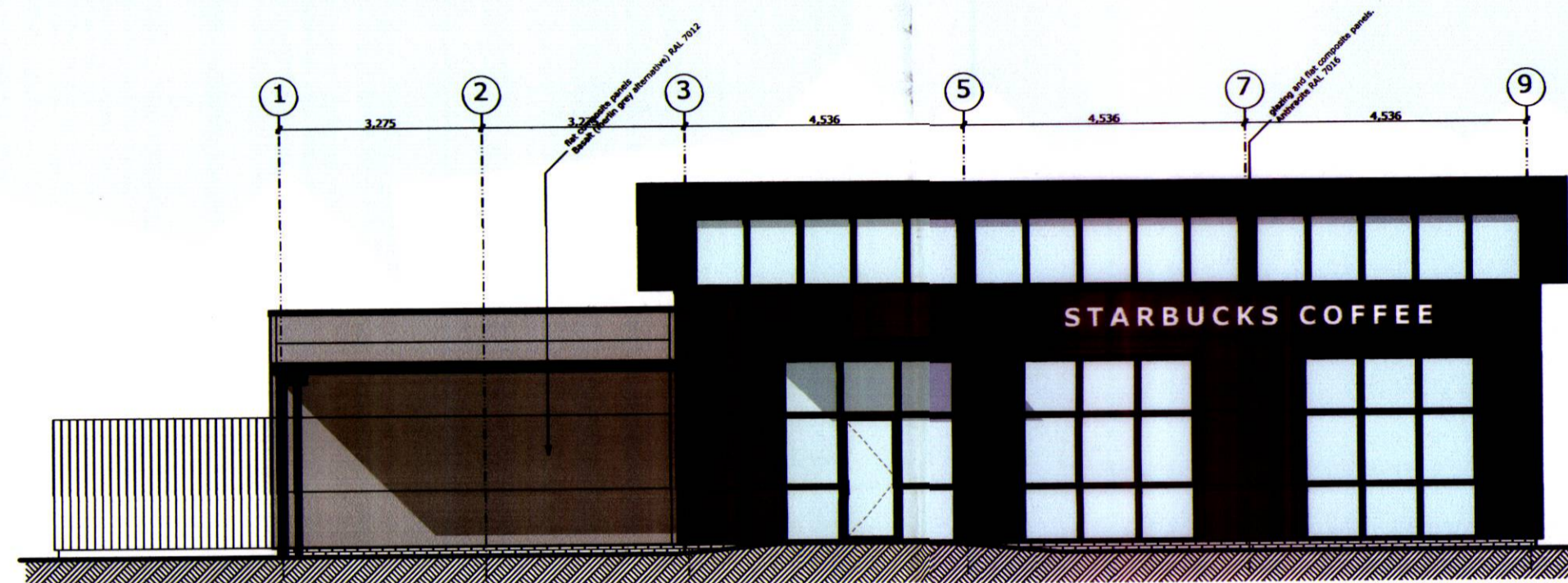


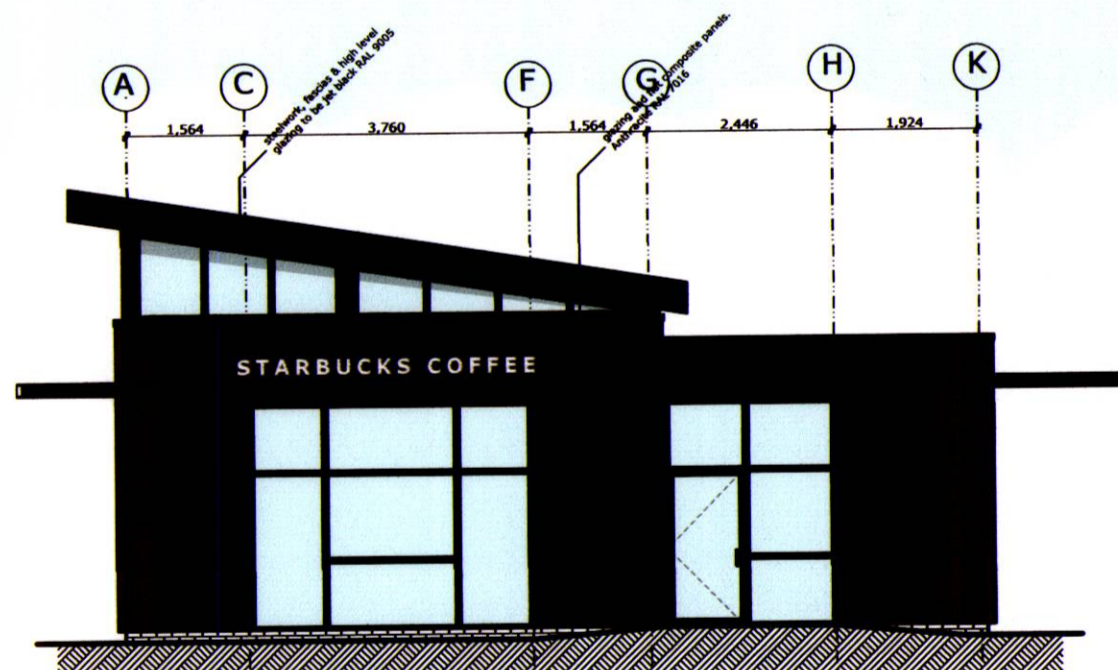
# Drive Thru coffee 1:100



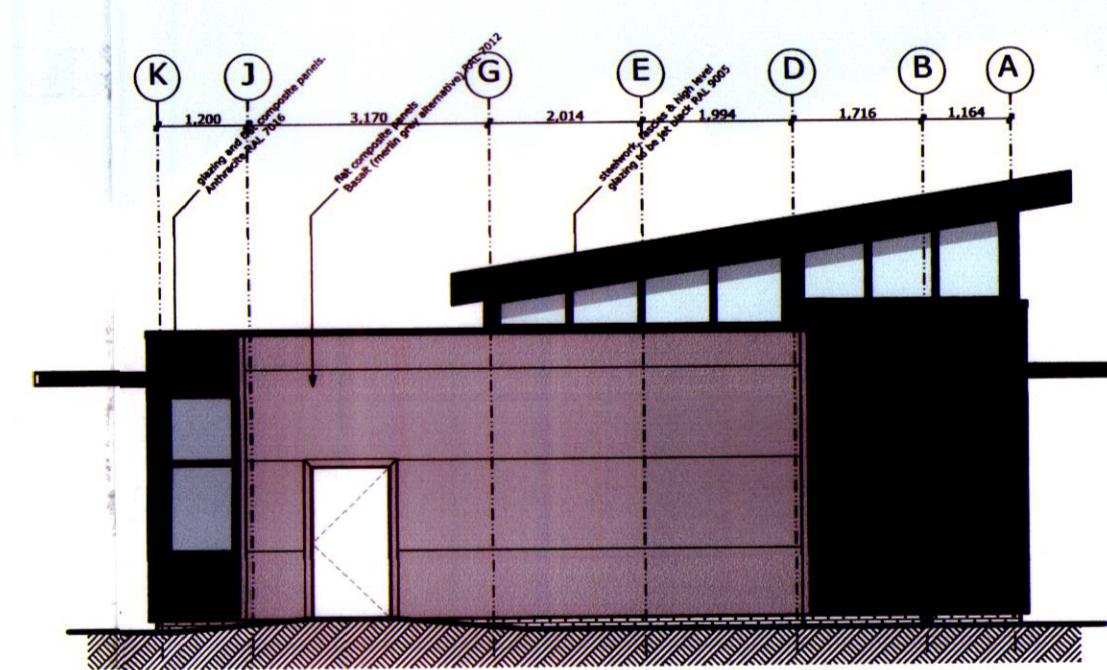
east elevation 1:100



west elevation 1:100



south elevation 1:100

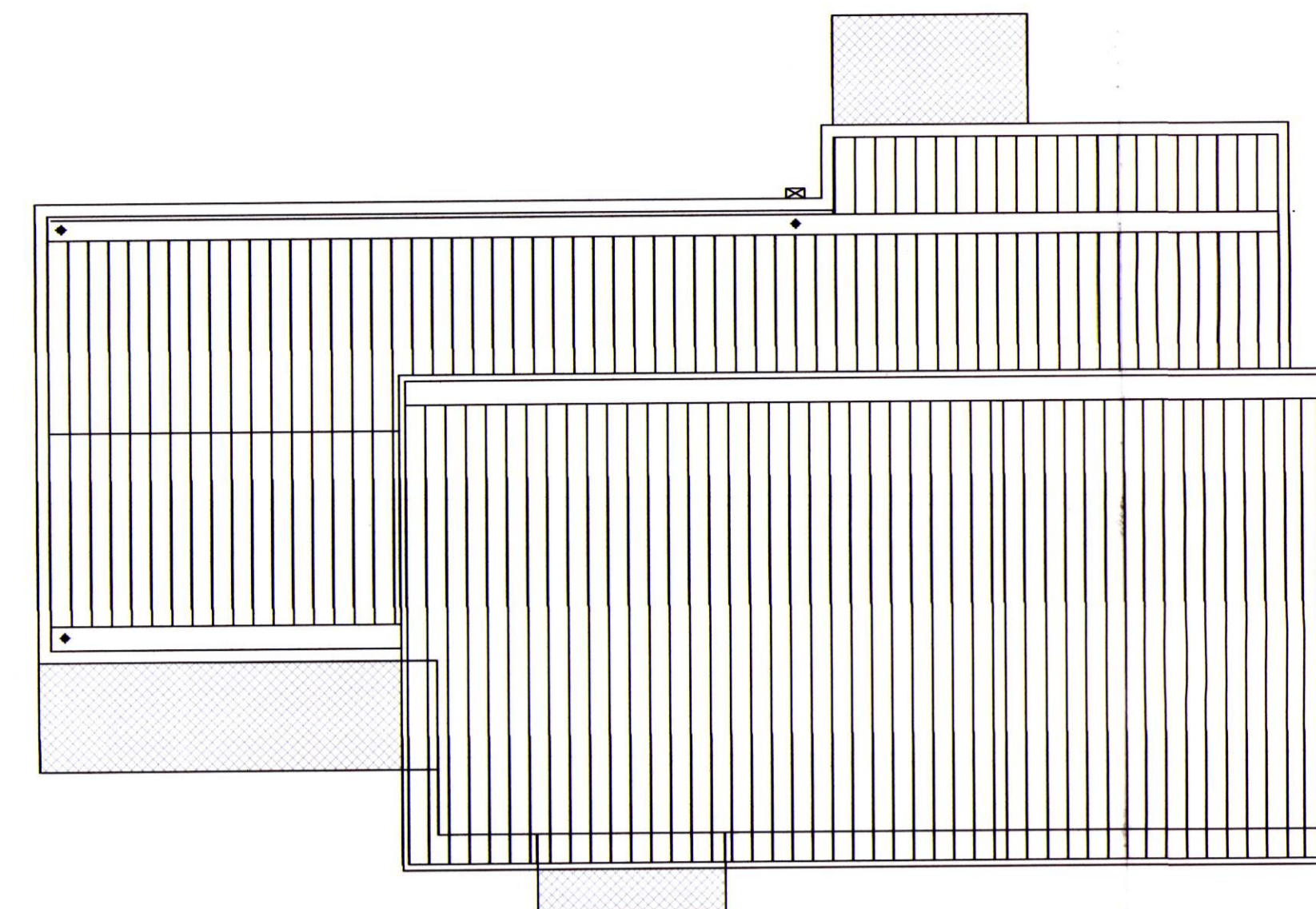
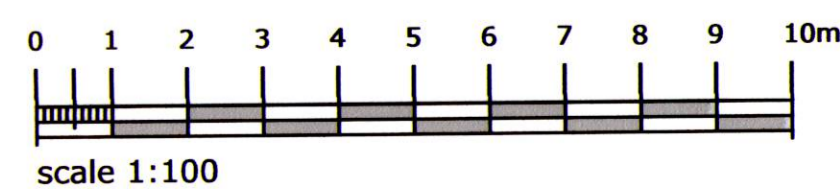


north elevation 1:100

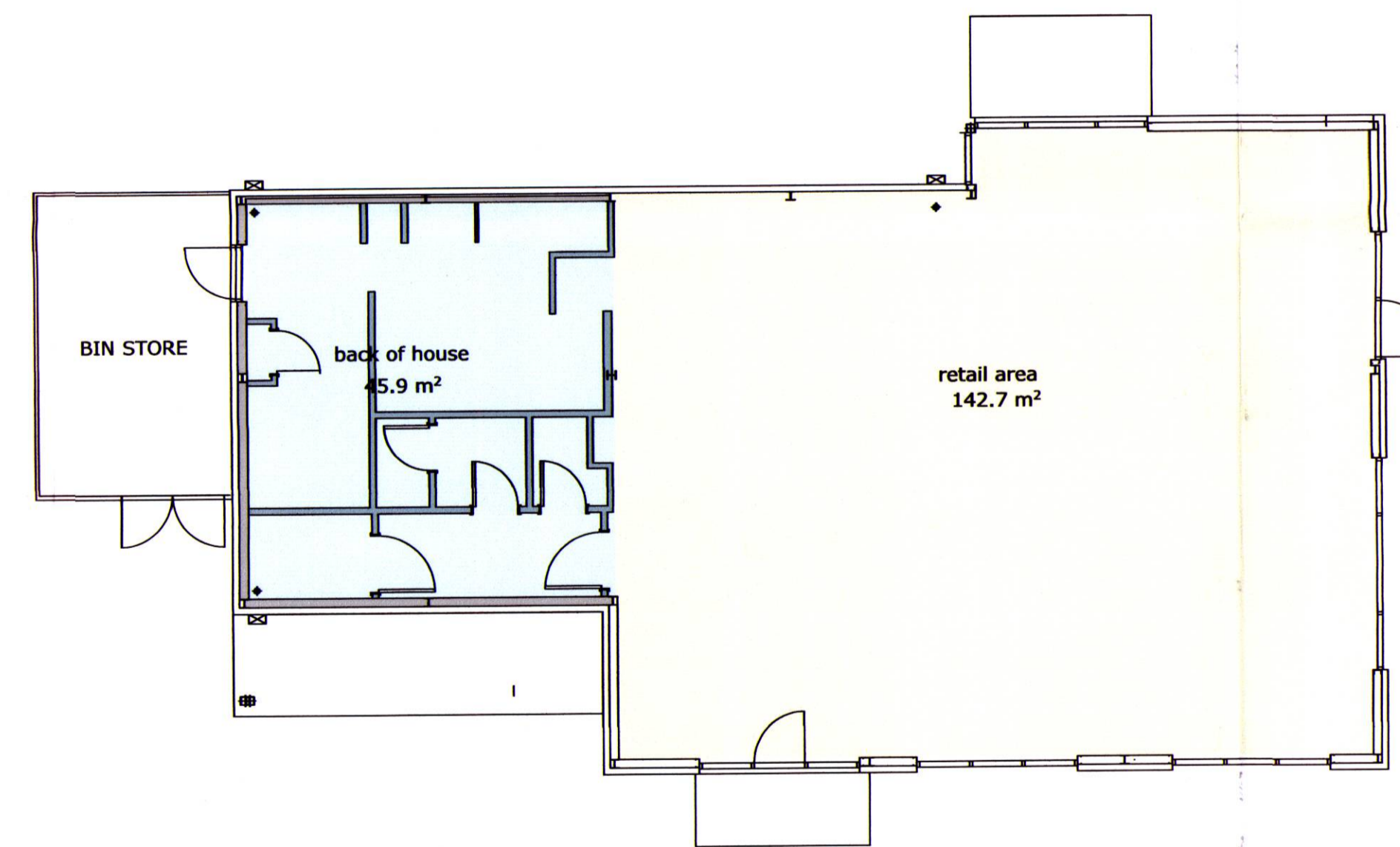
- JET BLACK RAL 9005 - STEELWORK, FASCIA, SOFFIT & HIGH LEVEL GLAZING
- BASALT (MERLIN GREY ALTERNATIVE) RAL 7012 - FLAT COMPOSITE PANEL
- ANTHRACITE RAL 7016 - GLAZING & FLAT COMPOSITE PANELS

**materials COFFEE DRIVE THRU**

roof - dark grey composite roof panels  
 walls - composite sheet wall cladding 'merlin grey' 'anthracite RAL 7016'  
 and black high level trims/fascia  
 fascia - black RAL: 9005  
 windows - powder coated aluminium RAL 9005



roof plan 1:100



floor plan 1:100

gross area 204.6 sqm

TELFORD & WREKIN COUNCIL  
 BUILDING CONTROL  
 RECEIVED  
 12 MAY 2017  
 PLAN No .....



**campbelldriverpartnership**  
 architects designers surveyors

client: Euro Garages

project: Starter Units  
 Hadley Park Telford

sheet: drive thru coffee

06.03.17	010
dwg no: 016.161	

scale: 1:1.3, 1:100 @ A1  
 date: 06.03.17  
 drawn: db  
 capricorn park  
 blakewater road  
 blackburn bb1 5qr  
 t: 01254 297700  
 email: design@cdparchitects.co.uk