

Osbaston

Muckleton Lane

Screening belt to west extended to new entrance through establishment of evergreen holly hedge

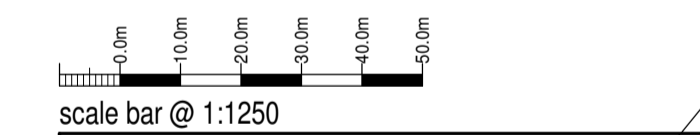
Lombardy Poplar avenue to front retained as landscape feature

New native planting screen proposed to screen views from south and south-west.

Entrance planting reinforced with establishment of four new oaks

7m wide native planting screen established to screen development from north. 1,500 trees planted in this location including, holly, yew, oak, alder, hawthorn, blackthorn, field maple and sweet chestnut.

- Key**
- Phase 1 Car Storage (640 cars max)
 - Staff/Visitor Parking (75 cars)
 - Site Boundary
 - Tree Groups Retained
 - New Planting
 - Individual Trees Retained
 - Trees Removed



Greenhouse Group Ltd
PROPOSED LIGHT VEHICLE PDI CENTRE,
THE ANGEL CENTRE,
HIGH ERCALL, TELFORD,
SHROPSHIRE, TF6 6RB
PLANNING PROPOSAL
PHASE 1 LAYOUT PLAN

Date	MARCH 2015	Sheet	A1	Scale	1:1250
Drwg No.	2014-1991-02	Rev.	E	Drawn	RG

A - 17/04/2014: ADDITIONAL PHASE 1 PARKING INDICATED AND PHASE 2 PARKING REMOVED
B - 17/07/2015: ADDITIONAL PHASE 1 PARKING REMOVED
C - 22/08/2015: STAFF PARKING AREA REVISED AND TREE NOTE ADDED
D - 26/03/2016: TRANSPORTER ACCESS INDICATED AND DELIVERY YARD REVISED ACCORDINGLY
E - 05/04/2016: LANDSCAPING DETAILS ADDED TO MATCH FUTURE ARBOR DRAWINGS

NOTE
This drawing is to be read in conjunction with Future Arbor
Arbicultural Consultancy and Landscape Design
drawings and schedule.

SAMMONS
rchitectural
LIMITED

Chartered Institute of
Architectural Technologists

10 Cawdry Buildings, Fountain Street, Leek, ST13 6JP
Telephone + Fax 01538 386002
E-mail: info@sammonsld.co.uk
Web: www.sammonsld.co.uk

This drawing is copyright. Do not scale.
All dimensions must be checked prior to commencement.