

**ACCOMMODATION SCHEDULE - ANWYL**

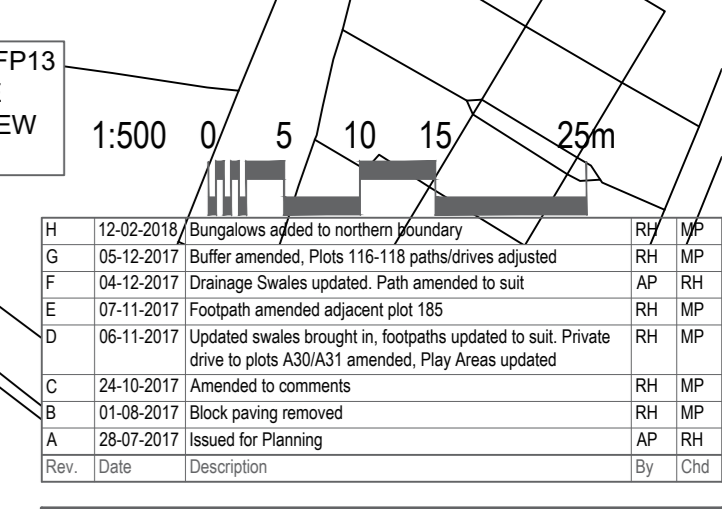
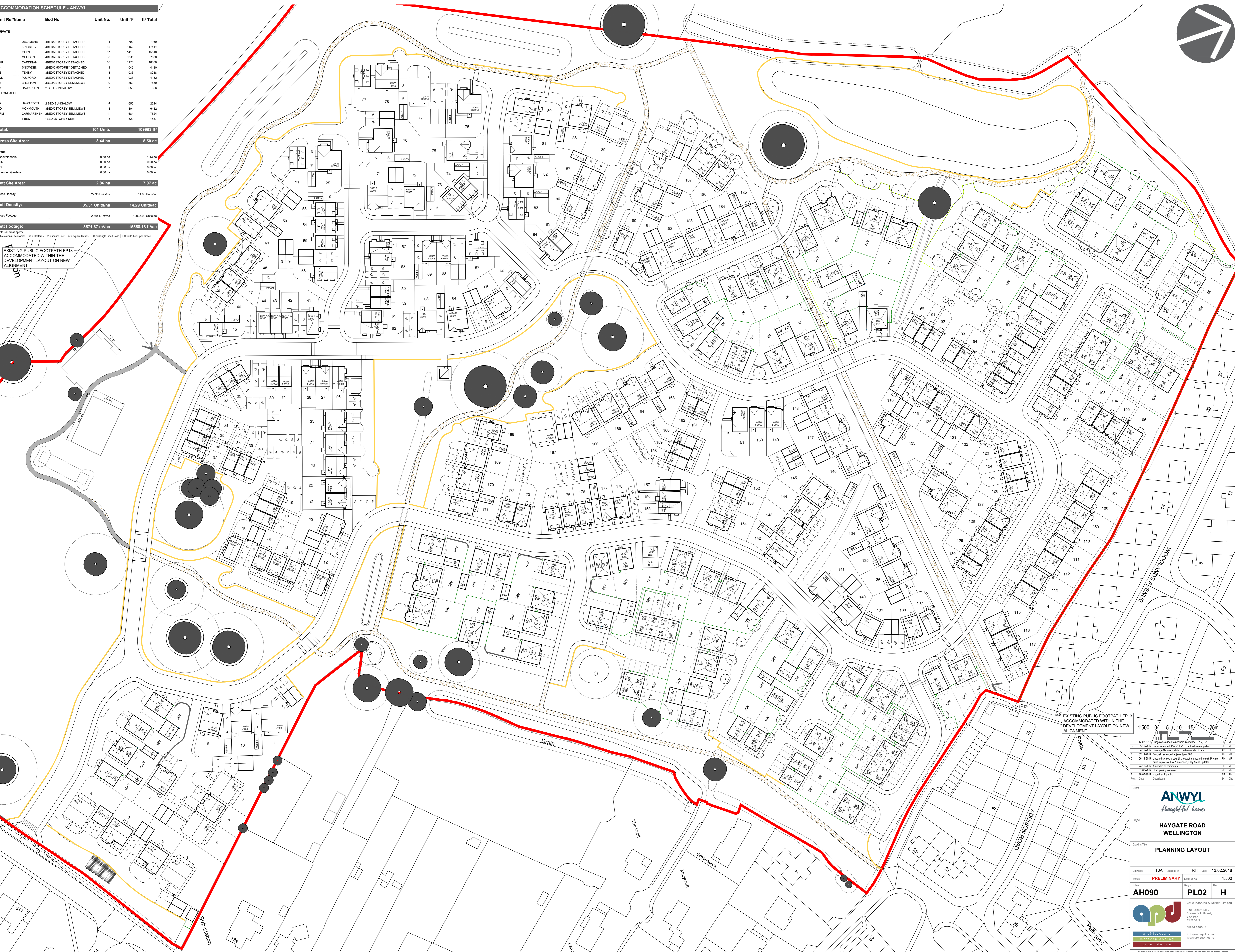
Unit Ref/Name	Bed No.	Unit No.	Unit #	ft <sup>2</sup> Total
<b>PRIVATE</b>				
D DELAMERE	4BED2STOREY DETACHED	4	1790	7190
K KINGSLEY	4BED2STOREY DETACHED	12	1462	17544
GL GLYN	4BED2STOREY DETACHED	11	1410	15510
ME MELISEN	4BED2STOREY DETACHED	8	1211	7888
CAR CARDIGAN	4BED2STOREY DETACHED	16	1175	18800
SN SNOWDEN	2BED2STOREY DETACHED	4	1045	4180
TE TERRY	3BED2STOREY DETACHED	8	1038	8288
PUL PULFORD	3BED2STOREY DETACHED	4	1033	4132
BRT BREITON	3BED2STOREY SEMIWAYS	9	850	7650
HA HAWARDEN	2 BED BUNGALOW	1	656	656
<b>AFFORDABLE</b>				
HA HAWARDEN	2 BED BUNGALOW	4	656	2624
MO MORNKETH	3BED2STOREY SEMIWAYS	8	804	6432
CA CARMARTHEN	2BED2STOREY SEMIWAYS	11	684	7524
IB 1 BED	1BED2STOREY SEMI	3	529	1587
<b>Total:</b>		<b>101 Units</b>		<b>109953 ft<sup>2</sup></b>
<b>Gross Site Area:</b>		<b>3.44 ha</b>		<b>8.50 ac</b>
<b>Areas:</b>				
Undevelopable		0.58 ha		1.43 ac
SOB		0.00 ha		0.00 ac
POS		0.00 ha		0.00 ac
Extended Gardens		0.00 ha		0.00 ac
<b>Nett Site Area:</b>		<b>2.86 ha</b>		<b>7.07 ac</b>
<b>Gross Density:</b>		<b>29.36 Units/ha</b>		<b>11.88 Units/ac</b>
<b>Nett Density:</b>		<b>35.31 Units/ha</b>		<b>14.29 Units/ac</b>
<b>Gross Footage:</b>		<b>2969.47 m<sup>2</sup>/ha</b>		<b>12035.00 Units/ac</b>
<b>Nett Footage:</b>		<b>3571.67 m<sup>2</sup>/ha</b>		<b>15558.18 ft<sup>2</sup>/ac</b>

**Private**  
175270 141 Total  
211521 188 TOTAL

14331 SQFT/Acre  
12.74 UNITS/Acre

**ACCOMMODATION SCHEDULE - BOVIS**

House Type	Sqft	Total Sqft	Number
S110	624	3120	5
S8201	645	3225	5
S241	764	18336	24
S351	890	11570	13
<b>Affordable</b>			
S8201	645	4515	7
P302	853	9383	11
P303	979	2937	3
P303DET	979	9790	10
P306	982	23568	24
P403CT	1200	10800	9
P404	1341	12069	9
P407	1225	6125	5
P409	1322	14542	11
P410	1383	13830	10
P502	1751	19261	11
P503	1608	8040	5
P506	1994	17946	9
P508	1587	15870	10
P4508	1587	11109	7
<b>Private</b>			
175270 141 Total			
211521 188 TOTAL			



**ANWYL**  
thoughtful homes

**HAYGATE ROAD WELLINGTON**

**PLANNING LAYOUT**

Drawn by: TJA | Checked by: RH | Date: 13.02.2018  
Status: PRELIMINARY | Scale: @ A3 | 1:500  
Job no.: | Dep no.: | Rev: |  
**AH090** | **PL02** | **H**

Adrian Planning & Design Limited  
The Stream Mill,  
Chestnut Hill Street,  
CH3 5JH  
01246 886644  
info@adpld.co.uk  
www.adpld.co.uk