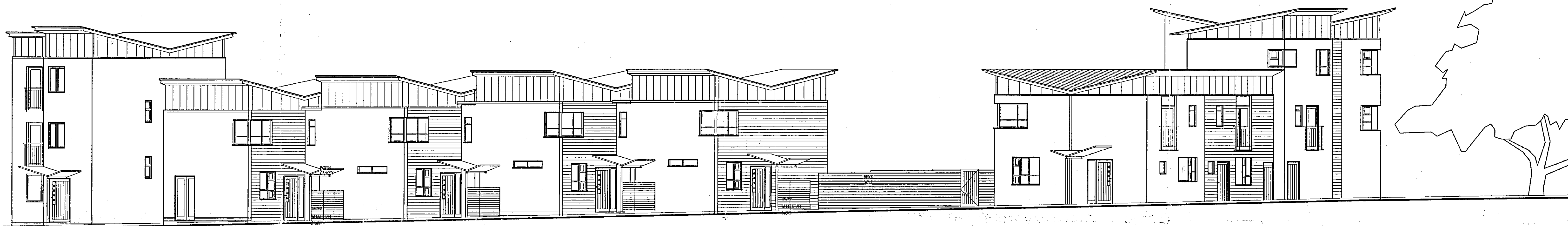


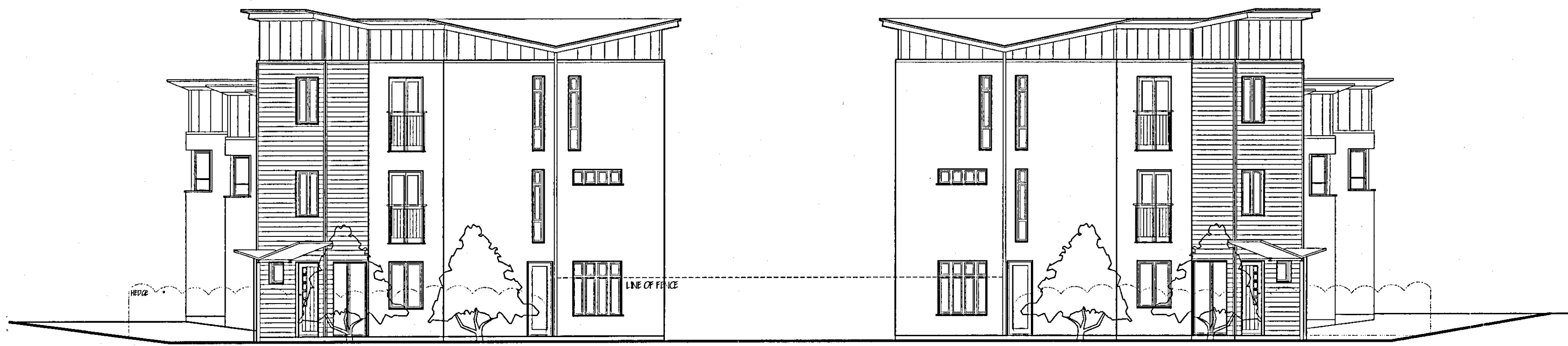
NORTH ELEVATION



SOUTH ELEVATION



EAST ELEVATION



WEST ELEVATION

BOROUGH OF TELFORD & WREKIN
ENVIRONMENT & REGENERATION
09 June 2006
RECEIVED

MATERIALS:
ROOF: PROFILED METAL ROOF
WALLS: RENDER AND TIMBER CLADDING
CLERESTOREY ELEMENT: ETHERNIT CLADDING
PLINTH: BRICK
WINDOWS AND DOORS: STAINED SOFTWOOD
BALCONIES: POWDER COATED STEEL

NOTE: FENCES AND LANDSCAPING OMITTED FOR CLARITY

BOROUGH OF TELFORD & WREKIN
ENVIRONMENT & REGENERATION

09 MAY 2006

RECEIVED

REV A: 28 APRIL 2006; ELEVATIONS REVISED TO SUIT NEW LAYOUT

15 College Hill
Shrewsbury
SY1 1LY

T: 01743 241144

F: 01743 352726

E: design@wdw.lk.com

wdw

chartered architects

client: DORDALE DEVELOPMENTS

project: Church Walk
Donnington

type: ELEVATIONS

TELFORD & WREKIN COUNCIL
ENVIRONMENT & REGENERATION

12 JUL 2007

APPROVED PLAN

drawing status

PRELIMINARY

scale: 1:100

project no: 3732

drawing no: P2.06

revision: A

© The contents of this drawing are the copyright of WDW Architects 2006

N:\Projects\2007\Church Walk Donnington\ELEVATIONS.dwg