

Safety Health and Environmental Information Box

Construction Risks, Maintenance/cleaning Risks, Demolition/adaptation Risks

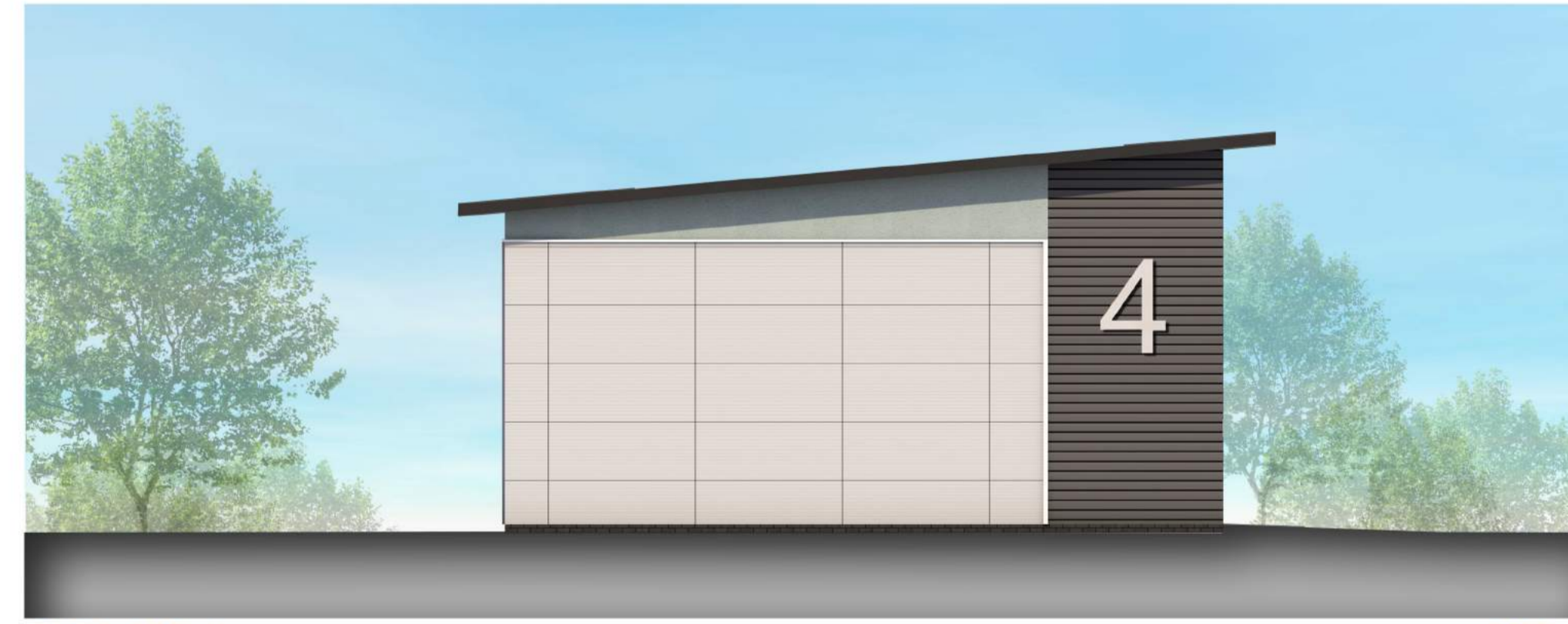
Notes:



Unit 4 - NI Park E-13 1:100



Unit 4 - NI Park E-14 1:100



Unit 4 - NI Park E-15 1:100



Unit 4 - NI Park E-16 1:100

RevID	Detail	Issued By	Issue Date



bit Wellington Civic Offices, Larkin Way, Wellington, Telford, Shropshire, TF1 1LX T: 01952 384500 W: www.bit-group.co.uk							
Project	NI Park						
Client	Telford & Wrekin Council						
Layout Title	Unit 4 - Proposed Elevations						
Scale @ A1	Status						
1:100	Planning						
Drawing Number							
project	originator	zone	level	type	note	number	rev.
17034	bit					A_02454	00