

**TELFORD & WREKIN COUNCIL HEALTH & WELLBEING BOARD**

6 December 2018

Sexual Health Service and Teenage Pregnancy.

**REPORT OF:**

Stacey Norwood, Senior Public Health Commissioner, Telford & Wrekin Council  
 Marion Hough, Sexual Health Service Manager, Midlands Partnership NHS  
 Foundation Trust

**LEAD CABINET MEMBER – Cllr Arnold England**

**PART A) – SUMMARY REPORT**

**1. SUMMARY OF MAIN PROPOSALS**

This report provides the HWB with an update on the current position and future service improvements planned for Sexual Health Services in Telford & Wrekin to improve outcomes for the population, especially young people.

**2. RECOMMENDATIONS**

The Board is requested to consider and note the information provided.

**3. IMPACT OF ACTION**

To ensure the teenage pregnancy and sexual health agenda is owned across partners and services are delivered effectively, the Council leads work with a range of stakeholders to improve outcomes associated with sexual health and teenage pregnancy, including:

- Delivery of high-quality, young people-friendly sexual health services – which are modern and accessible.
- Increased uptake of Chlamydia screening in sexually active under 25s – to improve treatment where needed.
- Increased uptake of HIV testing – to improve early diagnosis.

**4. SUMMARY IMPACT ASSESSMENT**

<b>COMMUNITY IMPACT</b>	Do these proposals contribute to a specific HWB Priority -	
	Yes	Encourage healthier lifestyles
	Do these proposals contribute to specific Co-Operative Council priority objective(s)?	

	Yes	Improve the health and wellbeing of our communities and address health inequalities.
	Will the proposals impact on specific groups of people?	
	Yes	It impacts on all people in the Borough who may be sexually active, but particularly young people and more vulnerable groups.
<b>TARGET COMPLETION/ DELIVERY DATE</b>	Ongoing improvement as part of the Health & Wellbeing Strategy.	
<b>FINANCIAL/VALUE FOR MONEY IMPACT</b>	Yes	<p>The Council holds a specific budget in support of Sexual Health Services which is funded from Public Health Grant. In 2018/19 this budget is £1.346m.</p> <p>Further reductions and changes to Public Health Grant allocations, and other Council funding is expected in future years. Public Health England have already advised a further reduction to Public Health Grant of £0.3m in 2019/20.</p> <p>The Council will need to find further savings of between £20m and £25m over the next two years, 2019/20 and 2020/21, and this may impact on the funding for this work stream.</p>
<b>LEGAL ISSUES</b>		<p>Section 195 Health and Social Care Act 2012 requires the Health and Wellbeing Board, for the purpose of advancing the health and wellbeing of the people in its area, to encourage persons who arrange for the provision of any health or social care services in that area to work in an integrated manner.</p> <p>Section 2B of the National Health Service Act 2006 (as amended) placed a duty upon a local authority to take appropriate steps to improve the health of local people in its area.</p> <p>The Public Health, NHS and Adult Social Care Outcomes Frameworks, as updated from time to time, contain outcomes in respect of sexual health services for adults and children, which the Council and NHS bodies are required to meet.</p> <p>Public Health England published the Teenage Pregnancy Prevention Framework on 15<sup>th</sup> January 2018 , which is to be read with the multi-agency “Framework for supporting teenage mothers and young fathers” published by Public Health England and the Local Government Association in 2016.</p>

		<p>Public Health England's list of tools and resources for commissioners of local HIV, sexual and reproductive health services was last updated on 26<sup>th</sup> March 2018 and links back to the 2013 Department of Health best practice commissioning guidance for local authorities.</p> <p>KF 29.11.2018</p>
<b>EQUALITY &amp; DIVERSITY</b>	Yes	There are specific health inequalities associated with teenage pregnancy and poor sexual health which are highlighted in the report.
<b>IMPACT ON SPECIFIC WARDS</b>	Yes	<p>Borough-wide impact but the highest rates of teenage conceptions are seen in the most deprived wards in the Borough.</p> <p>Our sexual health services are most regularly used by residents in the most deprived wards in the Borough.</p>
<b>PATIENTS &amp; PUBLIC ENGAGEMENT</b>	Yes	<p>Consultation, engagement and involvement with service users and young people in the design, commissioning and ongoing evaluation of this service.</p> <p>Consultation with young people in the development and distribution of the Respect Yourself resources.</p>
<b>OTHER IMPACTS, RISKS &amp; OPPORTUNITIES</b>		<p>The Midlands Partnership NHS Trust are commissioned by the Council to provide sexual health services, drug and alcohol treatment and recovery services locally. There are many links associated with the impact of drugs and alcohol consumption and sexual health, therefore joint working arrangements with clear referral/care pathways have been aligned in such a way that it supports professionals to address issues of 'risk and resilience' amongst service users as a whole rather than addressing separate risk areas in isolation.</p> <p>The Council are currently in the process of re-commissioning the Healthy Child Programme, incorporating the School Nursing Service which significantly contributes to the delivery of sexual health services in Telford &amp; Wrekin.</p> <p>There are clear links with sexual health services and the CSE agenda and the service strongly connects with the new YMCA Holly Project and the Council's CATE Team.</p>

## **PART B) – ADDITIONAL INFORMATION**

### **1. INFORMATION**

#### **1.2 Introduction**

The provision of sexual health services is an important and wide-ranging area of work for public health and a mandated commissioning responsibility for the Council. Most of the adult population of England are sexually active, and having the correct sexual health interventions and services can have a positive effect on population health and wellbeing as well as reducing inequalities in individuals at risk. Access to effective, appropriate contraception services is essential to support the teenage pregnancy agenda.

Poor sexual health is not equally distributed within the population. Strong links exist between deprivation and teenage conceptions, as well as Sexually Transmitted Infections (STIs) and termination of pregnancy. Groups at higher risk of poor sexual health face stigma and discrimination, which can influence their ability to access services promptly.

#### **1.3 Commissioning Landscape**

A number of responsible commissioning organisations are involved in commissioning various aspects of sexual health services, with Local authorities responsible for commissioning the majority sexual health services and interventions. Some elements of care are commissioned by NHS Clinical Commissioning Groups, such as most contraceptive services through GPs, abortion and vasectomy services or by NHS England such sexual assault referral centres (SARC) and HIV treatment and care.

#### **1.4 Local Sexual Health Services**

Telford & Wrekin Council has commissioned an integrated sexual health service from Midlands Partnership Foundation Trust since 1<sup>st</sup> April 2016. The service brings together all contraception and sexual health services, including Genito-Urinary Medicine (testing and treatment of STIs), targeted clinical outreach, proactive sexual health promotion and prevention and HIV prevention and support (testing, counselling) and psychosexual counselling. The hub is located at Bishton Court in the town centre, offering an accessible, yet discreet location.

In 2017/18 a total of 9,660 attendances took place within the service, this is an increase of 15% compared to the previous year. The service is available to everyone regardless of age, however the highest proportion of attendances (40%) were amongst young people aged between 16-24 years. Of the 9,660 attendances 3,028 (31%) were from residents of Telford & Wrekin's most deprived wards. On average over 2,000 new patients access the sexual health service each year which is an indication that people are aware of the service.

The service provides confidential non-judgemental, individualised patient centred care. Patients who are under 18 and those deemed vulnerable are risk assessed enabling the nurses to safeguard the service user appropriately and refer on to other members of the multi-disciplinary team if needed. The service's Safeguarding Lead keeps up to date with current safeguarding matters and guidance and shares information with the wider team and Family Connect where appropriate. The provider reports though the Datix safety system which alerts the appropriate people within the Trust and allows regular clinic audits to improve quality and safe practice. Staff are committed to keeping up to date with level 3 safeguarding training and have access to local authority training.

The Sexual Health Service has developed strong links across the community offering outreach sexual health service at a number of locations, including at the YMCA Holly project which offers support for local survivors of Child Sexual Exploitation. Joint referral pathways have been developed and implemented, allowing the Holly project workers to make service user appointments through contacting the link nurse.

## **1.5 Outcomes**

In Telford & Wrekin there is a lower than average prevalence of STIs amongst the general population, and particularly in relation to Chlamydia. However, there is still a commitment to improve access to STI testing within clinics, through the use of SH:24 a safe and discreet online STI test ordering service.

PHE have identified that within the West Midlands region, the overall diagnosis rate for gonorrhoea has increased gradually over the past ten years. For this reason, in Telford & Wrekin Chlamydia and Gonorrhoea combined test kits are now offered for free to all young people, as part of the National Chlamydia Screening Programme. These test kits are available within the sexual health service, online, via school nurses and pharmacies.

Locally there is a lower than average uptake of HIV testing amongst people visiting the sexual health service, therefore we have increased access to HIV online testing kits to all people at risk. Further efforts are needed to improve uptake rates and joint audit between the Public Health Team and the Clinical Lead HIV will be conducted early in 2019 as a way to improve uptake.

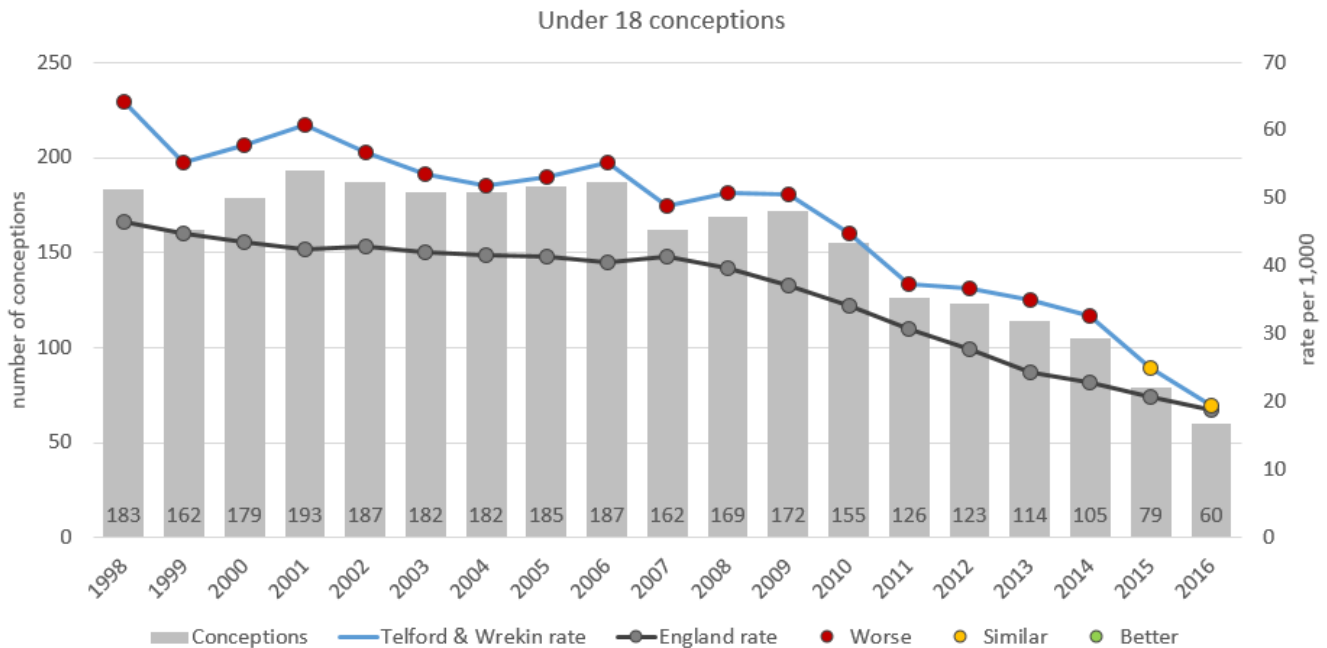
Please see Appendix 1: For an overview of reproductive and sexual health outcomes in Telford and Wrekin.

## **1.6 Teenage Pregnancy**

For some young people, becoming a parent is a positive choice. However, teenage pregnancy is often associated with poor health and social outcomes for both the mother and child. Young mothers are more likely to suffer postnatal depression and less likely to complete their education, more likely to live in poverty and more likely to become teenage parents themselves. In Telford & Wrekin rates of teenage pregnancy are currently at the lowest ever recorded, having halved since 1998 from 183 conceptions per annum to 60 conceptions per annum in 2016 (see Figure 1).

In 2015 and 2016 the rates in Telford and Wrekin have fallen and become 'similar to the national average' for the first time since local authority records began. Of our 16 statistical near neighbours we now have the third lowest rate of teenage pregnancy.

**Figure 1 Trends in Under 18 Conceptions in Telford & Wrekin**



### 1.7 Working with Schools

School Nurses are supported by the sexual health service to offer regular public health drop-ins that include chlamydia testing and treatment, emergency contraception and sexual health promotion in secondary schools; ensuring that young people have multiple access routes to sexual health services.

After consultation with a group of looked after children and in conjunction with the sexual health service and partners, a 'Respect Yourself' guide was developed and distributed for free to all 13 -14 year old students in Telford and Wrekin in 2017. The aim of the guide was to inform young people about sex, contraception and staying safe. This was delivered as part of a wraparound package of relationship and sex education (RSE) alongside a Loudmouth educational theatre production. This guide is in the process of being updated and will again be distributed across all secondary schools and FE colleges in Telford.

From September 2020 all secondary schools will be required to deliver relationship sex education (RSE) and all primary schools will be required to deliver 'relationships education'. Therefore it is important that as a local authority we work with all schools to influence and commission consistent good RSE as part of responsibilities to improve public health outcomes for children and young people. To support this we have purchased and are supporting the rollout of the 'Respect Yourself Programme' which is a package of support that includes lesson plans and resources to assist delivery whilst also supporting professionals so that they feel confident to address RSE and wider health issues in a positive and coordinated way. The Future in Mind network, led by the Severn Teaching Alliance, are leading the implementation of the Respect Yourself Programme. A total of 62 partners are engaged in Future in Mind and implementation of the programme is currently taking place across the borough.

### **1.8 Service Developments**

As part of the wider service offer and to maximise access to sexual health services, the Council also commission GP practices to offer long acting reversible contraception (LARC) and pharmacies to offer Chlamydia and Gonorrhoea screening, Chlamydia treatment, and emergency contraception. Analysis of young women repeatedly visiting community pharmacies to access emergency hormonal contraception (EHC) revealed that the number of young women regularly accessing EHC from pharmacies is small. However the safeguarding risks are sufficient to prompt the development of a bespoke Child Sexual Exploitation training package which will be delivered by West Mercia Police Harm Reduction Unit and the councils CATE team to all pharmacies in Telford & Wrekin. This training will build upon safeguarding training already delivered to 30 pharmacists in June 2018.

Telford & Wrekin CCG have recently carried out a procurement exercise for the delivery of termination of pregnancy services, awarding with BPAS (British Pregnancy Advisory Service) the contract. As a way to fostering closer working arrangements between sexual health services, as well as developing a seamless care pathway for service users, BPAS will be co-located at Bishton Court sexual health hub from December 2018.

## **2. IMPACT ASSESSMENT – ADDITIONAL INFORMATION**

See Part A section 4

## **3. PREVIOUS MINUTES**

Health and Wellbeing Board, 15<sup>th</sup> May 2013, Sexual Health Services and Commissioning Processes Report.

#### 4. **BACKGROUND PAPERS**

Report prepared by:

Helen Onions, Consultant in Public Health, Telford & Wrekin Council  
Stacey Norwood, Senior Commissioner Public Health, Telford & Wrekin Council  
Marion Hough, Sexual Health Service Manager, Midlands Partnership NHS  
Foundation Trust

## Appendix 1

### An overview of reproductive and sexual health in Telford and Wrekin

Indicator	Period	England	Telford & Wrekin	T&W Trend
Syphilis diagnosis rate per 100,000	2017	12.5	6.9	→
Gonorrhoea diagnosis per 100,000	2017	78.8	52.4	↑
Chlamydia detection rate per 100,000 aged 15-24 (PHOF indicator 3.02)	2017	1,882	2,188	↑
Chlamydia proportion aged 15-24 screened	2017	19.3	18.0	↓
Genital warts diagnosis rate per 100,000	2017	103.9	81.7	→
Genital herpes diagnosis rate per 100,000	2017	56.7	38.6	→
HIV testing uptake, MSM (%)	2017	94.8	92.9	→
HIV late diagnosis (%) (PHOF indicator 3.04)	2014-16	40.1	39.3	-
Prevalence of diagnosed HIV infection per 1,000 among persons aged 15-59 years	2016	2.31	1.05	→
Population vaccination coverage - HPV (PHOF indicator 3.03)	2016/17	87.2	91.4	-
Abortions under 10 weeks	2017	76.6	70.5	→
Under 25s repeat abortions	2017	26.7	26.4	→
GP prescribed LARC excluding injections rate per 1,000	2016	28.8	44.6	→
Pelvic inflammatory disease (PID) admissions rate per 100,000	2016/17	242.4	157.8	→
Ectopic pregnancy admissions rate per 100,000	2016/17	90.3	49.5	→
Cervical cancer registrations rate per 100,000	2011-13	9.6	13.5	-
Under 18s conception rate per 1,000 (PHOF indicator 2.04)	2016	18.8	19.5	↓
Under 18s conceptions - % leading to abortion	2016	51.8	46.7	↑
Sexual offences rate per 1,000 (PHOF indicator 1.12)	2016/17	1.90	3.6	↑

Source: Public Health England; Sexual and Reproductive Health Profiles.  
<https://fingertips.phe.org.uk/profile/SEXUALHEALTH>