

**Health & Adult Social Care
Scrutiny Committee
Adults with Learning Disabilities
18th December 2018**

Sarah Dillon

Assistant Director, Adult Social Care



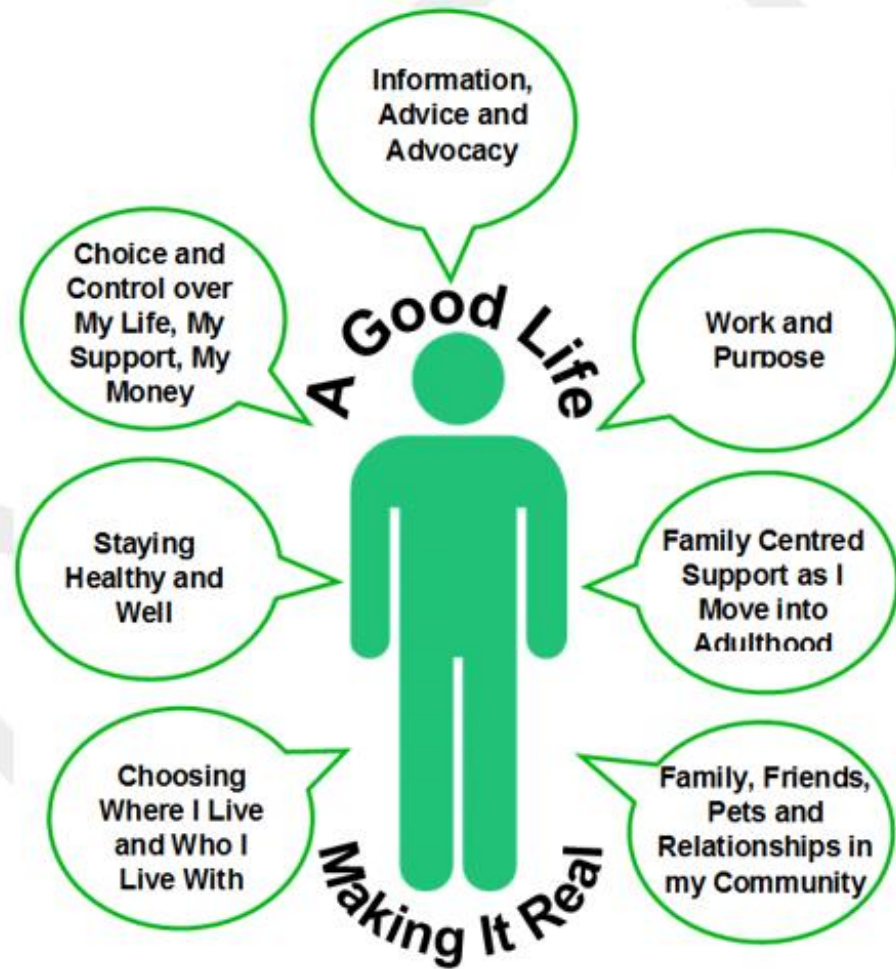
Our Learning Disabilities Progression Model: OUR AIM:

- To provide quality support in a personalised way so that people with a learning disability their families/carers can receive the assistance they need in a way that enhances their independence and enables them to lead meaningful and valued lives within their own communities

Our approach is underpinned by:



Our Learning Disabilities Progression Model: KEY PRIORITIES:

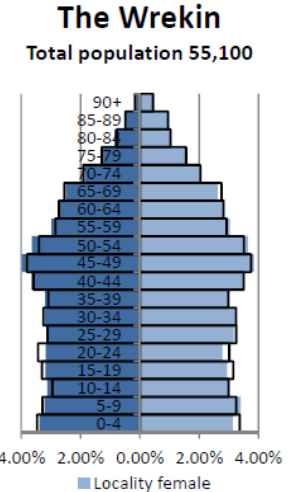
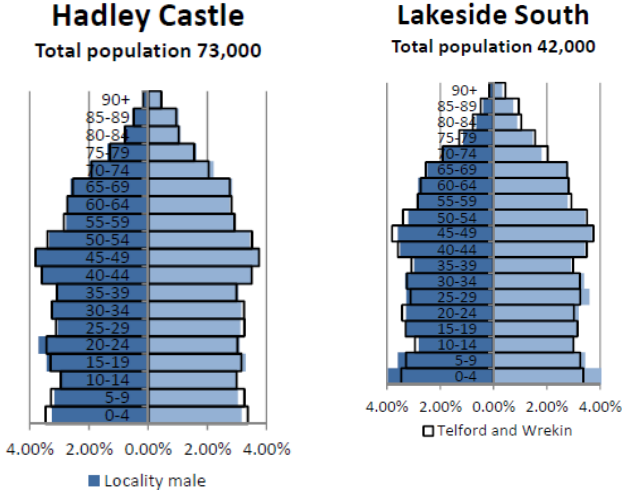


We have developed a number of key priorities that reflect what people with a learning disability and their families/carers have told us so far.

***Life not a service
Good lives happen when
people have good support and
a voice that is
valued, respected
and listened to***

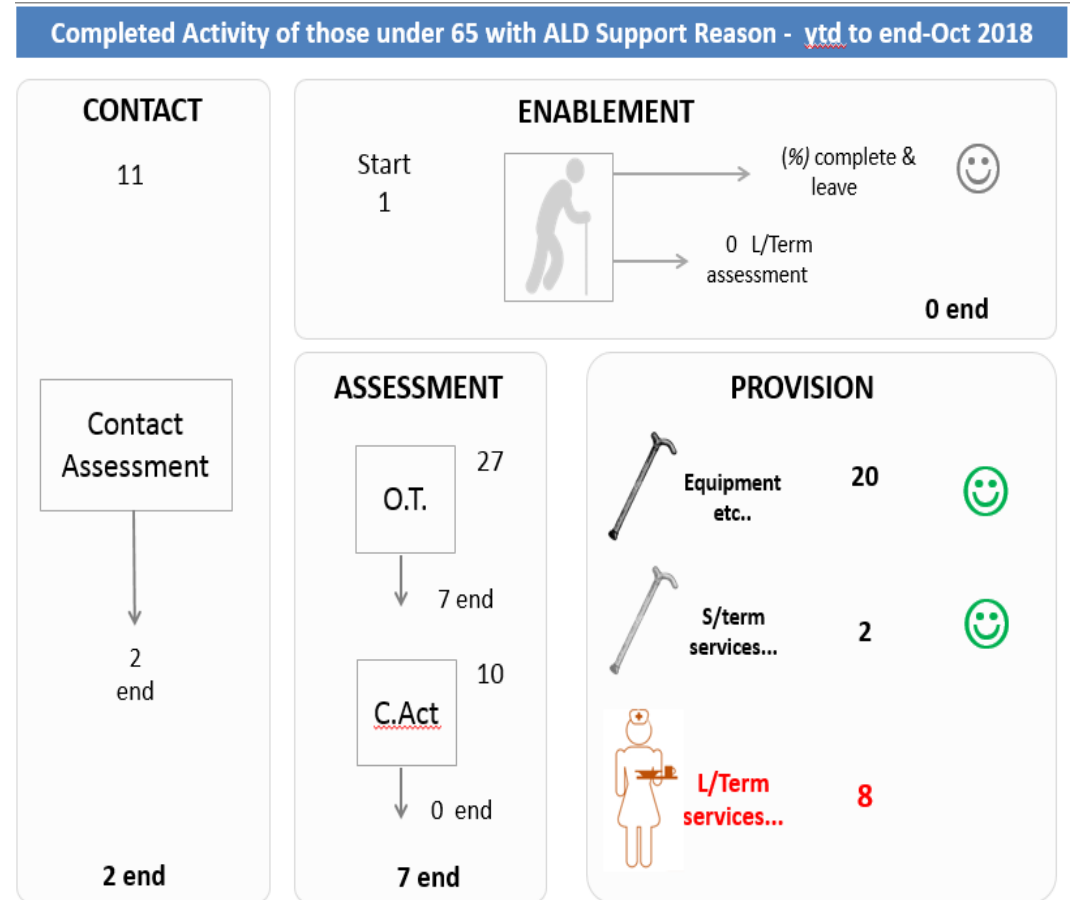
We have the following ALD individuals in each of the Localities in receipt of long term learning disability support services.

- **122 in Hadley** – this locality has the largest population of the 3 localities, around 73,000 residents (43% of the population)
- **135 in Lakeside** – this locality has the smallest population of the 3 localities and it has around 42,000 residents (25% of the population)
- **128 in Wrekin** – this locality contains nearly a third of residents which is 55,000 residents (32% of the population)



Our Performance

Our performance continues to show we are supporting more people to remain in their own homes. We have had 11 new contacts year to end – October 2018, 2 of the contacts resulted in no further action, with the right advice and support provided. One contact went on to have some reablement services and 27 contacts had occupational therapy services of which 7 of those with the right help and support ended. 10 contacts received a Care Act Assessment of which 3 ended. Since the start of the financial year, we have only had 8 new contacts in receipt of long term services.



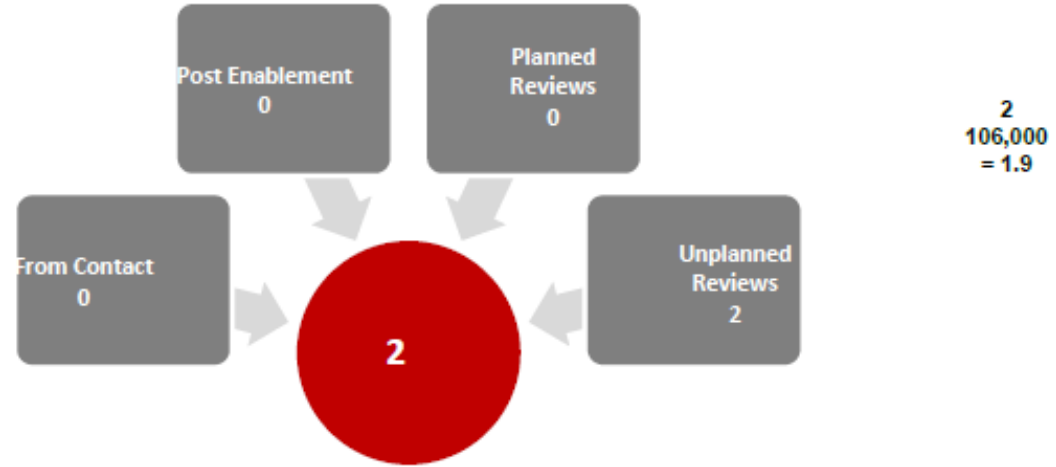
Adult Social Care Outcomes Framework (ASCOF)

- Our ASCOF performance compared to the regional and national targets shows that out of 21 comparable measures, we have improved in 14 of them.
- Our areas of strength are around permanent admissions to residential care. For more information the comparative data can be accessed here [ASCOF Comparitors 2017/18](#)
- Our strengths as recorded in the ASCOF data include:
 - ALD settled accommodation
- Our challenges as recorded in the ASCOF data include:
 - ALD employment.
 - Direct payments

Residential & Nursing

We are continually below the national target of residential placements for 18-64 age category

2A(1) - Long Term Support Needs Met by Admission to Residential and Nursing Care Per 100,000 Population (18-64)



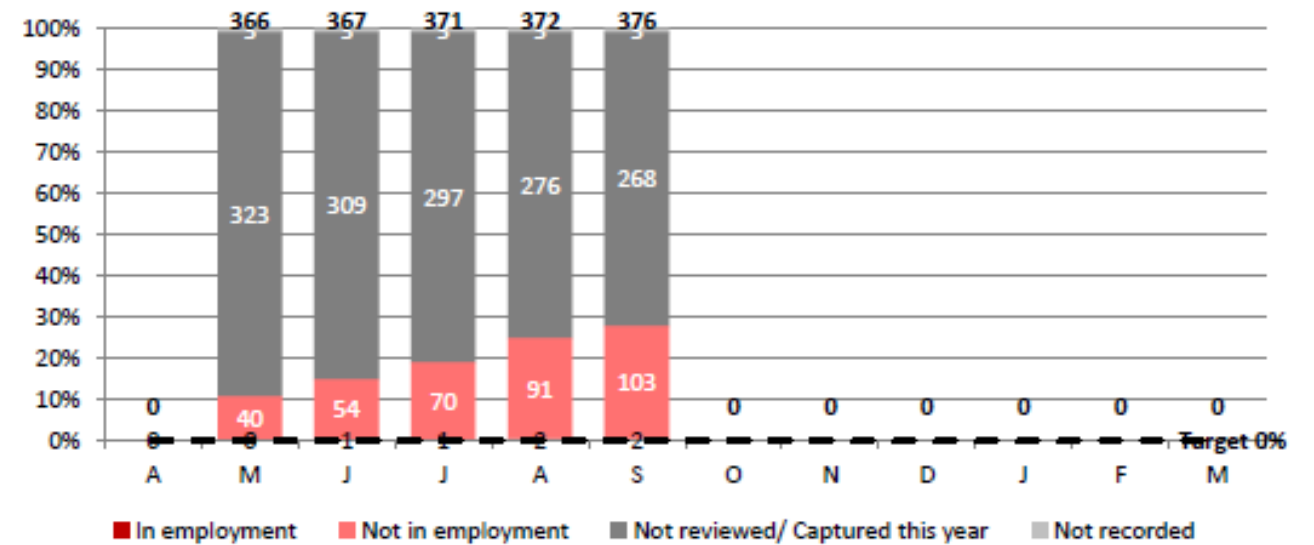
Previous Performance	2014-15	2015-16	2016-17	2017-18	2018-19
Telford & Wrekin	8.7	1.0	4.8	5.8	1.9
National	14.2	13.3	12.8		

Employment

Our current performance is at 2% against the national target of 5.7% target.

We are working closely with My Options and their Stepping into Work Programme supporting individuals back into paid and/or voluntary work

1E - ALD Employment



Previous Performance	2014-15	2015-16	2016-17	2017-18	2018-19
Telford & Wrekin	2.0%	2.3%	1.0%	2.0%	0.5%
National	6.0%	5.8%	5.7%		

Development & Continual Improvement for ALD

- Continuing with our training programme with NDTi
- Working with Children's colleagues for Young People transitioning to Adult Social Care
- Working with My Options & the Community Participation Team to support individuals with employment opportunities
- Developed a Progression Model to help individuals to live independently where possible and appropriate to do so in their Communities, the model includes levels of support dependent on need
- Commissioning of Autism training
- Developing Social Care Housing Strategy with a focus on ALD individuals
- Increase the use of Assistive Technology and Digital initiatives and solutions including Alexa and other voice activated devices
- Develop Forums to include the voice of Parents and Carers
- Increase relationships between Care Providers, Landlords and Developers
- We are continuing to work with our CCG Colleagues to ensure that individuals are getting the right support and funding from ASC and CCG
- As part of the Transforming Care Programme (TCP) we are working with specialist learning disability health services and other agencies to ensure proactive, planned and co-ordinated support for people with a learning disability and/or autism who display behaviour that challenges, including those with a mental health condition.
- We continue to forge strong working relationships with our Specialist learning disability health colleagues with a greater understanding of their role and how a joint approach can support individuals and provide better outcomes

Case Studies

- Helen Cottrell – Senior Assistive Technology and Sensory Impairment Officer talking and demonstrating Grand Care kits
- Good practice video from Social Worker Emily Melaniphy - <https://youtu.be/5ecpflXwJyc>
- Tom has been supported by the My Options Services, who have helped him via the Stepping into Work Programme to find work. Tom has been successful in securing employment with Café Go and is supported by his mum at home. **Play Video**