

**NOTES:**

The copyright © of this drawing is vested in the Architect and must not be copied or reproduced without consent.

All Contractors must visit the site and be responsible for taking and checking dimensions relative to their work. Sutton and Wilkinson Chartered Architects to be advised of any variation between drawings and site conditions.

DO NOT SCALE OFF THIS DRAWING... IF IN DOUBT ASK



Plot 2  
FRONT ELEVATION

Plot 1



Plot 2  
SIDE ELEVATION



Plot 1  
REAR ELEVATION

Plot 2



Plot 1  
SIDE ELEVATION

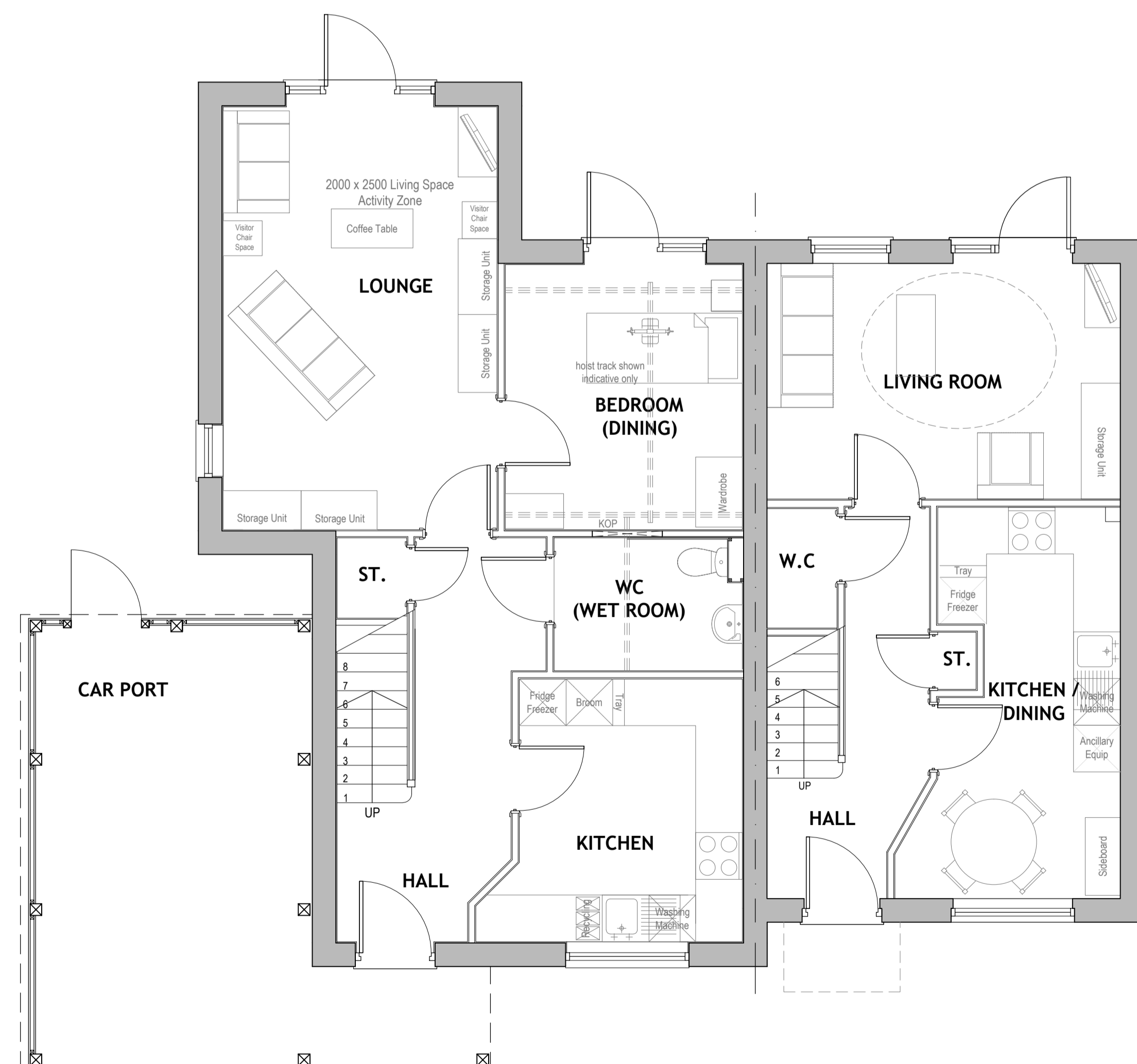
**MATERIALS LEGEND:**

- ① Concrete interlocking roof tiles to Local Authority approval.
- ② UPVC fascias & soffit boards. Colour - Anthrasite Grey
- ③ UPVC rainwater gutters & downpipes. Colour - Anthrasite Grey
- ④ Facing brickwork to Local Authority approval.
- ⑤ UPVC double glazed windows
- ⑥ Ecodek composite 19x136mm fascia board. To be fixed 'hit & miss' either side of structural support posts & fixing battens. Colour to Local Authority approval
- ⑦ Ecodek composite 19x136mm fascia board. To be fixed 'close boarded' to gable trusses. Butt jointed.

House Type A 2B4P	
Gross Internal Floor Area	
m <sup>2</sup>	72
ft <sup>2</sup>	775

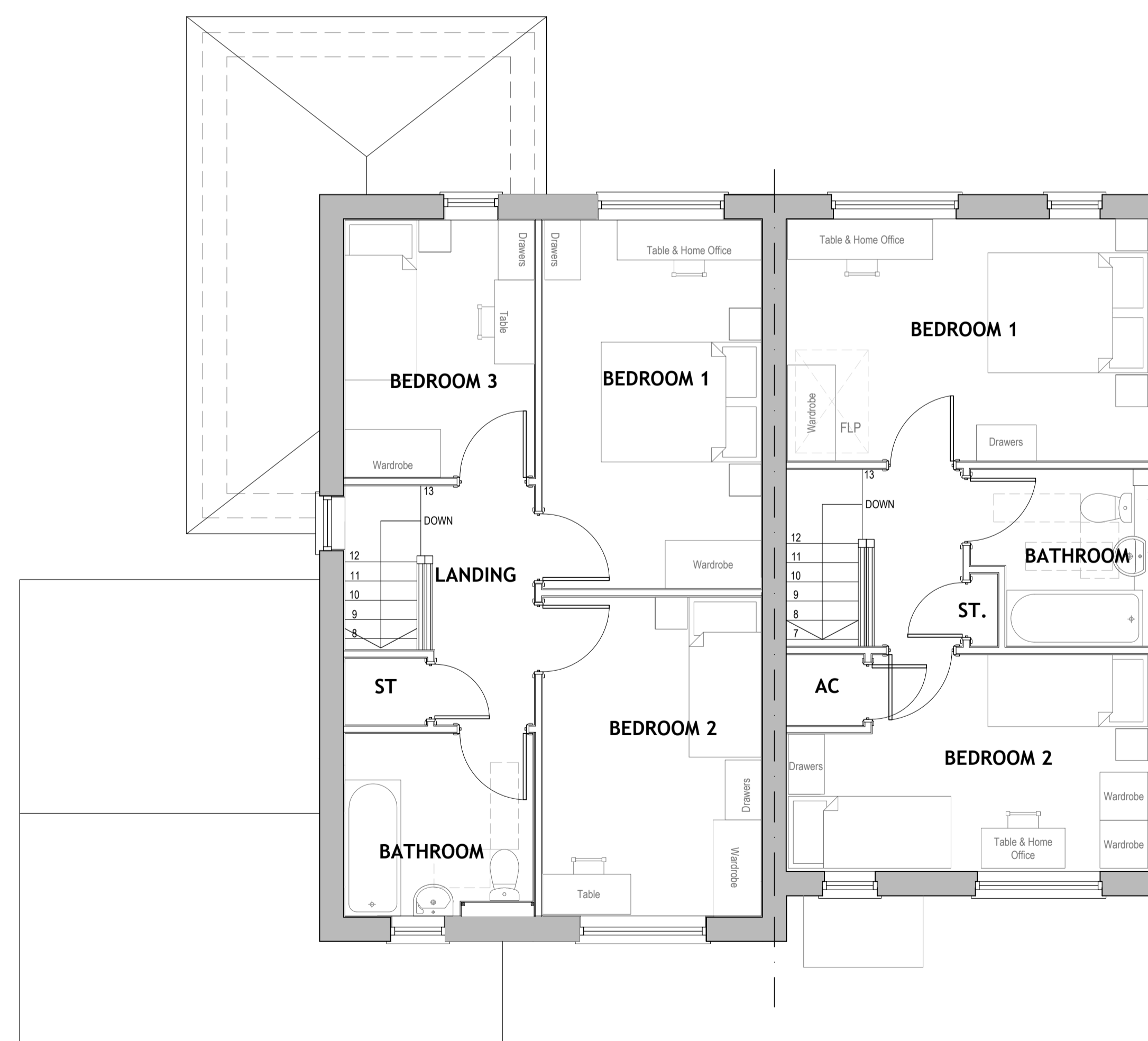
House Type B1 4B5P	
Gross Internal Floor Area	
m <sup>2</sup>	102
ft <sup>2</sup>	1097

**PLANNING ISSUE**



Plot 2 - House Type B1  
GROUND FLOOR PLAN

Plot 1 - House Type A



Plot 2 - House Type B1  
FIRST FLOOR PLAN

Plot 1 - House Type A

PROJECT:  
Residential Development  
Pool Meadow  
Hadley  
TF1 5RJ

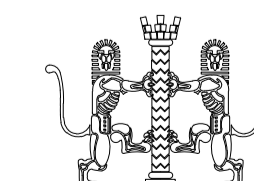
CLIENT:  
Wrekin Housing Trust

TITLE:  
House Types A & B1 - Plots 1 & 2  
Floor Plans & Elevations

**SUTTON AND WILKINSON**  
CHARTERED ARCHITECTS

Victoria House, 13 New Penkridge Road,  
Cannock, Staffs, WS11 1HW

Telephone: 01543 466441  
Facsimile: 01543 462469  
e-mail: office@suttonwilkinson.co.uk



SCALE	DRAWN	DATE	SIZE
1:50 / 1:100	SD	Oct.16	A1
DRAWING NUMBER			REVISION
2326 - 19			