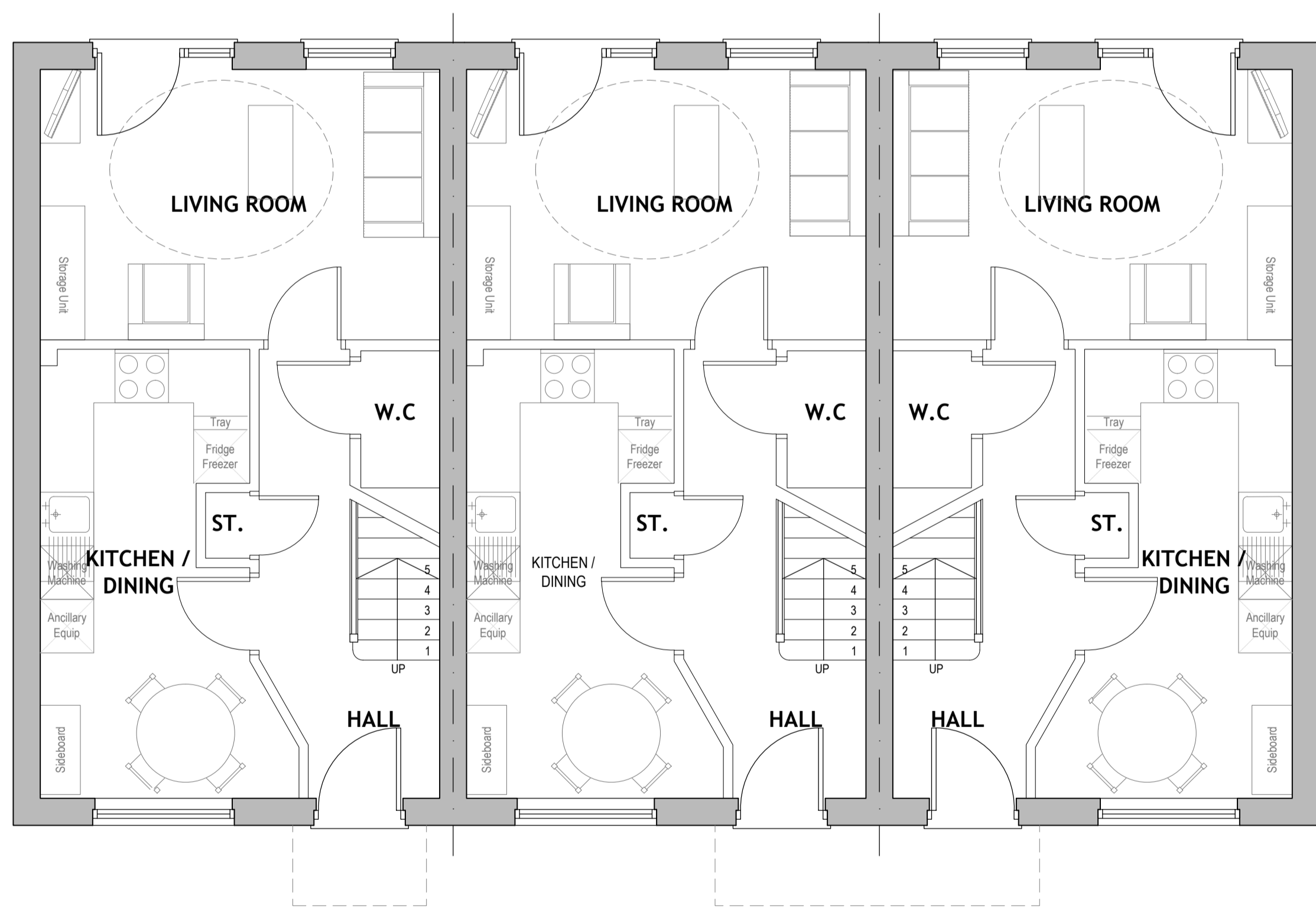
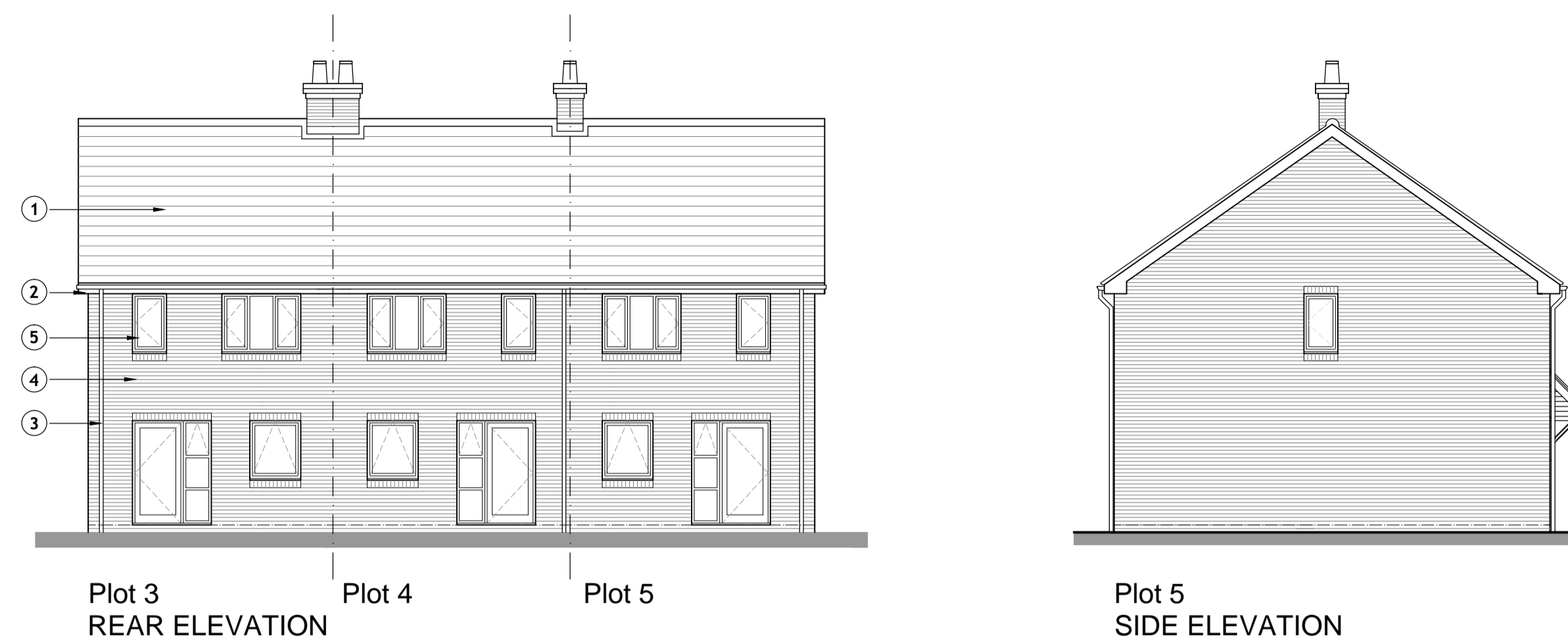


**NOTES:**

The copyright © of this drawing is vested in the Architect and must not be copied or reproduced without consent.

All Contractors must visit the site and be responsible for taking and checking dimensions relative to their work. Sutton and Wilkinson Chartered Architects to be advised of any variation between drawings and site conditions.

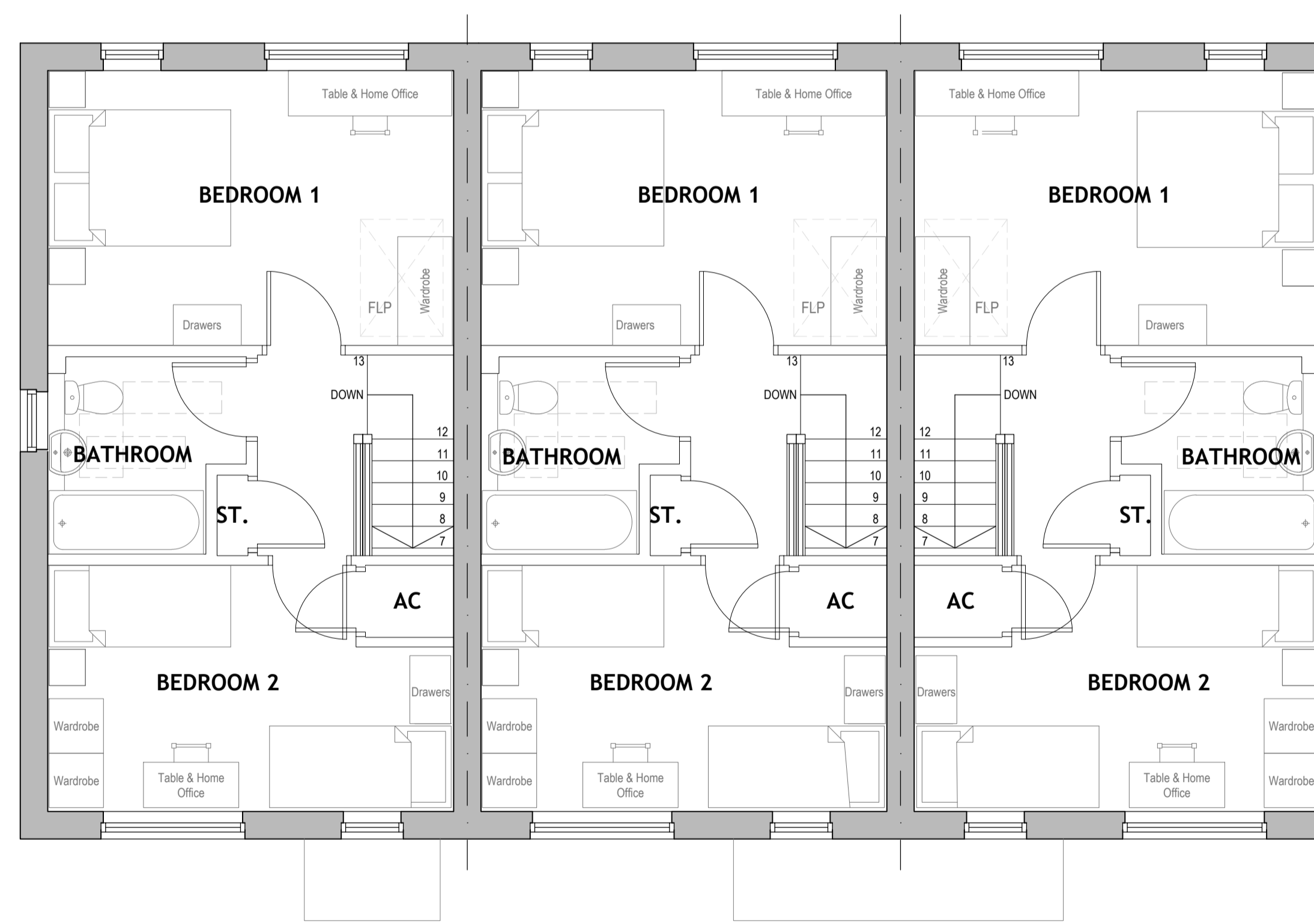
DO NOT SCALE OFF THIS DRAWING... IF IN DOUBT ASK



Plot 5 - House Type A  
GROUND FLOOR PLAN

Plot 4 - House Type A

Plot 3 - House Type A



Plot 5 - House Type A  
FIRST FLOOR PLAN

Plot 4 - House Type A

Plot 3 - House Type A

**MATERIALS LEGEND:**

- ① Concrete interlocking roof tiles to Local Authority approval.
- ② UPVC fascias & soffits boards. Colour - Anthrasite Grey
- ③ UPVC rainwater gutters & downpipes. Colour - Anthrasite Grey
- ④ Facing brickwork to Local Authority approval.
- ⑤ UPVC double glazed windows

House Type A 2B4P	
Gross Internal Floor Area	
m <sup>2</sup>	71.6
ft <sup>2</sup>	770

**PLANNING ISSUE**

**PROJECT:**  
Residential Development  
Pool Meadow  
Hadley  
TF1 5RJ

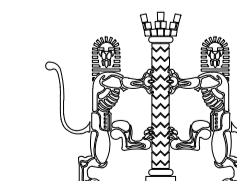
**CLIENT:**  
Wrekin Housing Trust

**TITLE:**  
House Type A - Plots 3, 4 & 5  
Floor Plans & Elevations

**SUTTON AND WILKINSON**  
CHARTERED ARCHITECTS

Victoria House, 13 New Penkridge Road,  
Cannock, Staffs, WS11 1HW

Telephone: 01543 466441  
Facsimile: 01543 462469  
e-mail: office@suttonwilkinson.co.uk



SCALE	DRAWN	DATE	SIZE
1:50 / 1:100	SD	Oct.16	A1
DRAWING NUMBER			REVISION
2326 - 20			