

NOTES:

The copyright © of this drawing is vested in the Architect and must not be copied or reproduced without consent.

All Contractors must visit the site and be responsible for taking and checking dimensions relative to their work. Sutton and Wilkinson Chartered Architects to be advised of any variation between drawings and site conditions.

DO NOT SCALE OFF THIS DRAWING... IF IN DOUBT ASK



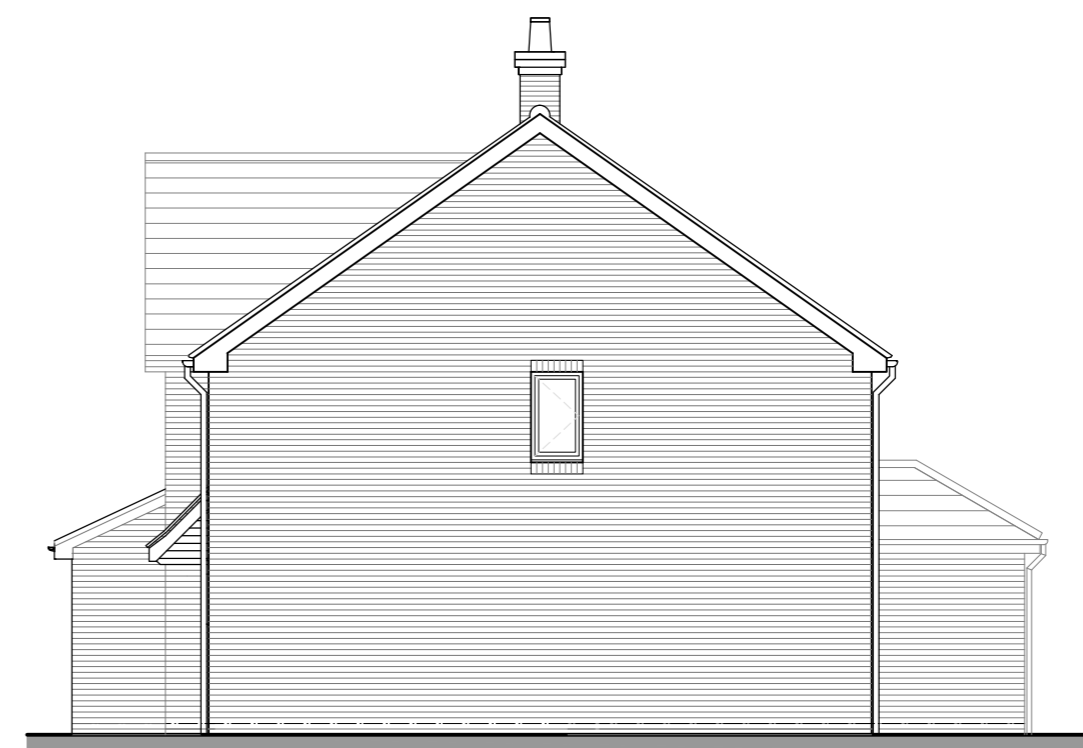
Plot 13
FRONT ELEVATION



Plot 13
SIDE ELEVATION



Plot 10
REAR ELEVATION



Plot 13
SIDE ELEVATION

MATERIALS LEGEND:

- ① Concrete interlocking roof tiles to Local Authority approval.
- ② UPVC fascias & soffit boards. Colour - Anthrasite Grey
- ③ UPVC rainwater gutters & downpipes. Colour - Anthrasite Grey
- ④ Facing brickwork to Local Authority approval.
- ⑤ UPVC double glazed windows
- ⑥ Ecodek composite 19x136mm fascia board. To be fixed 'hit & miss' either side of structural support posts & fixing battens. Colour to Local Authority approval
- ⑦ Ecodek composite 19x136mm fascia board. To be fixed 'close boarded' to gable trusses. Butt jointed.

REV.	AMENDMENT:	DATE:
A	PLOT 13 KITCHEN PROJECTION ADDED TO SUIT REV. FLOOR PLAN	09.08.18

PLANNING ISSUE

PROJECT:
Residential Development
Pool Meadow
Hadley
TF1 5RJ

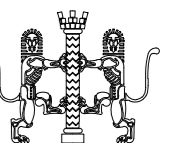
CLIENT:
Wrekin Housing Trust

TITLE:
House Types A & B2 - Plots 10,11,12 & 13
Proposed Elevations

SUTTON AND WILKINSON
CHARTERED ARCHITECTS

Victoria House, 13 New Penkridge Road,
Cannock, Staffs, WS11 1HW

Telephone: 01543 466441
Facsimile: 01543 462469
e-mail: office@suttonwilkinson.co.uk



SCALE	DRAWN	DATE	SIZE
1:100	SD	Oct.16	A2
DRAWING NUMBER			REVISION
2326 - 26			A