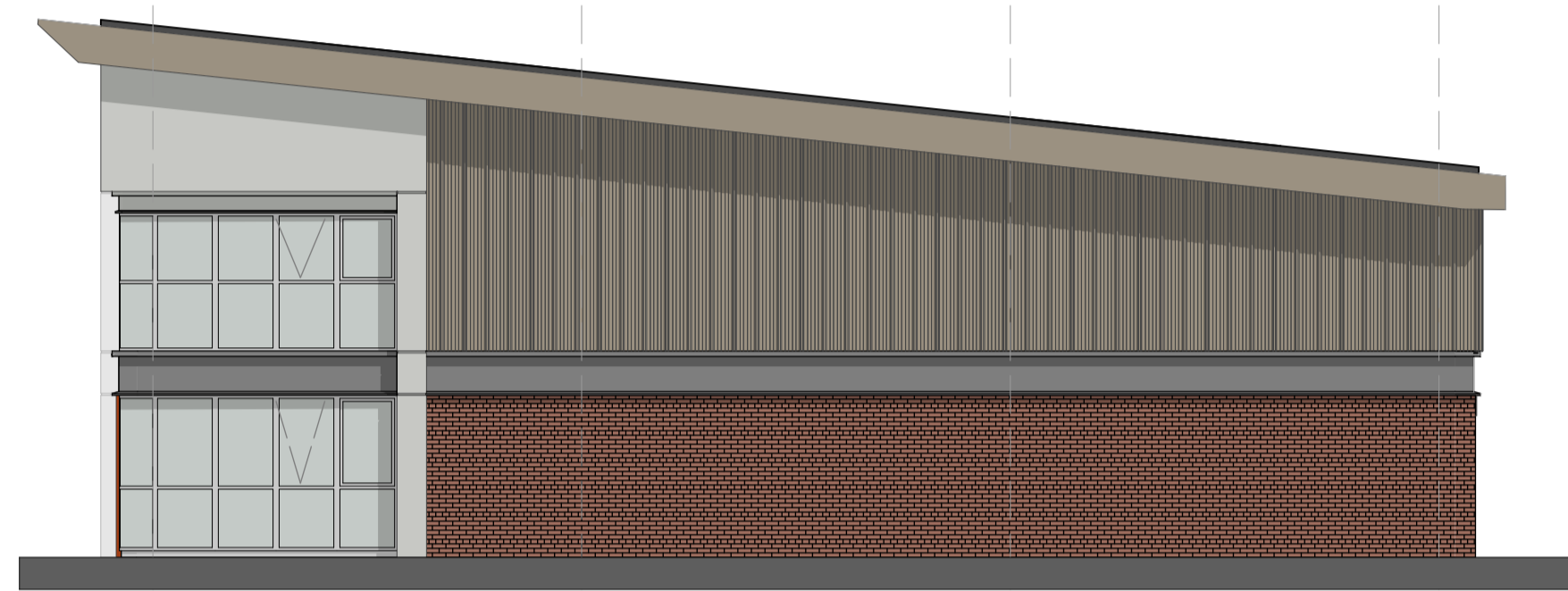




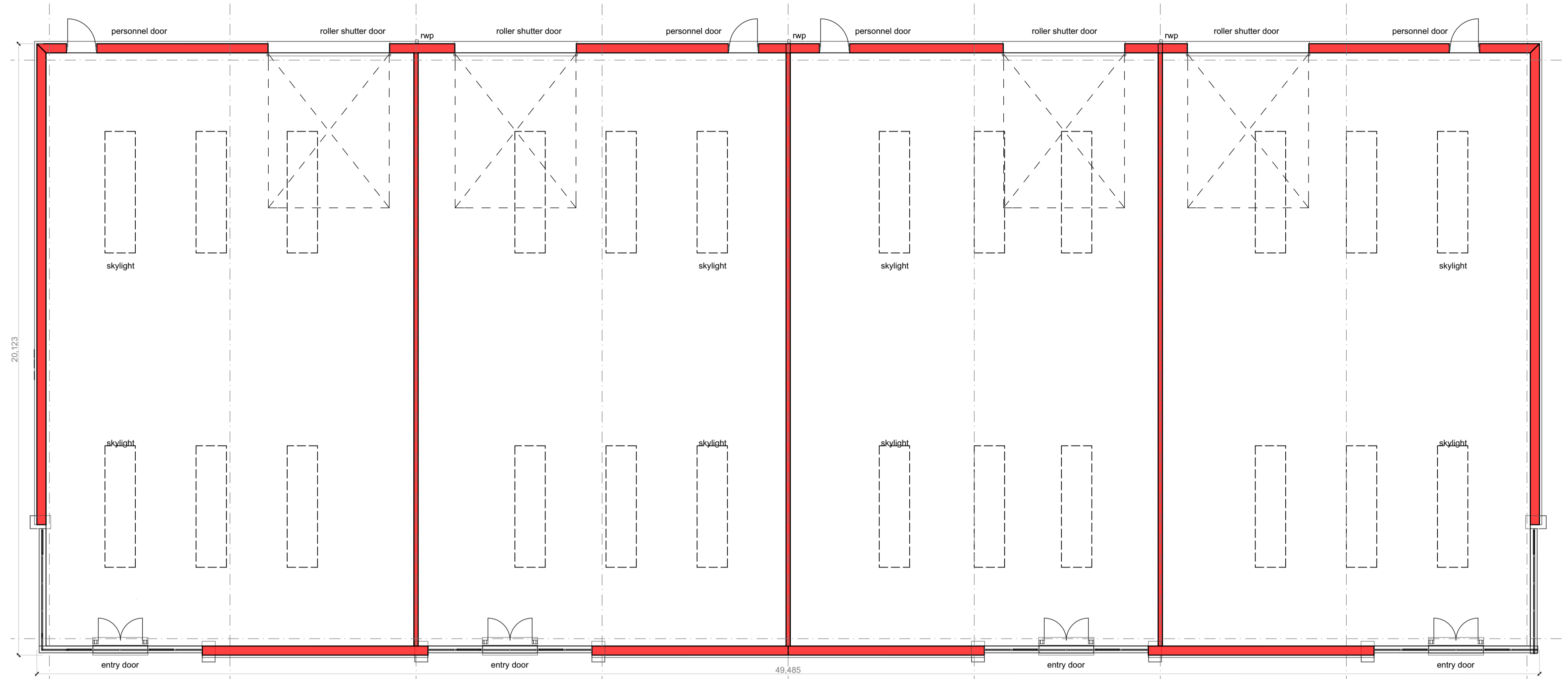
A2 1:100 Gable



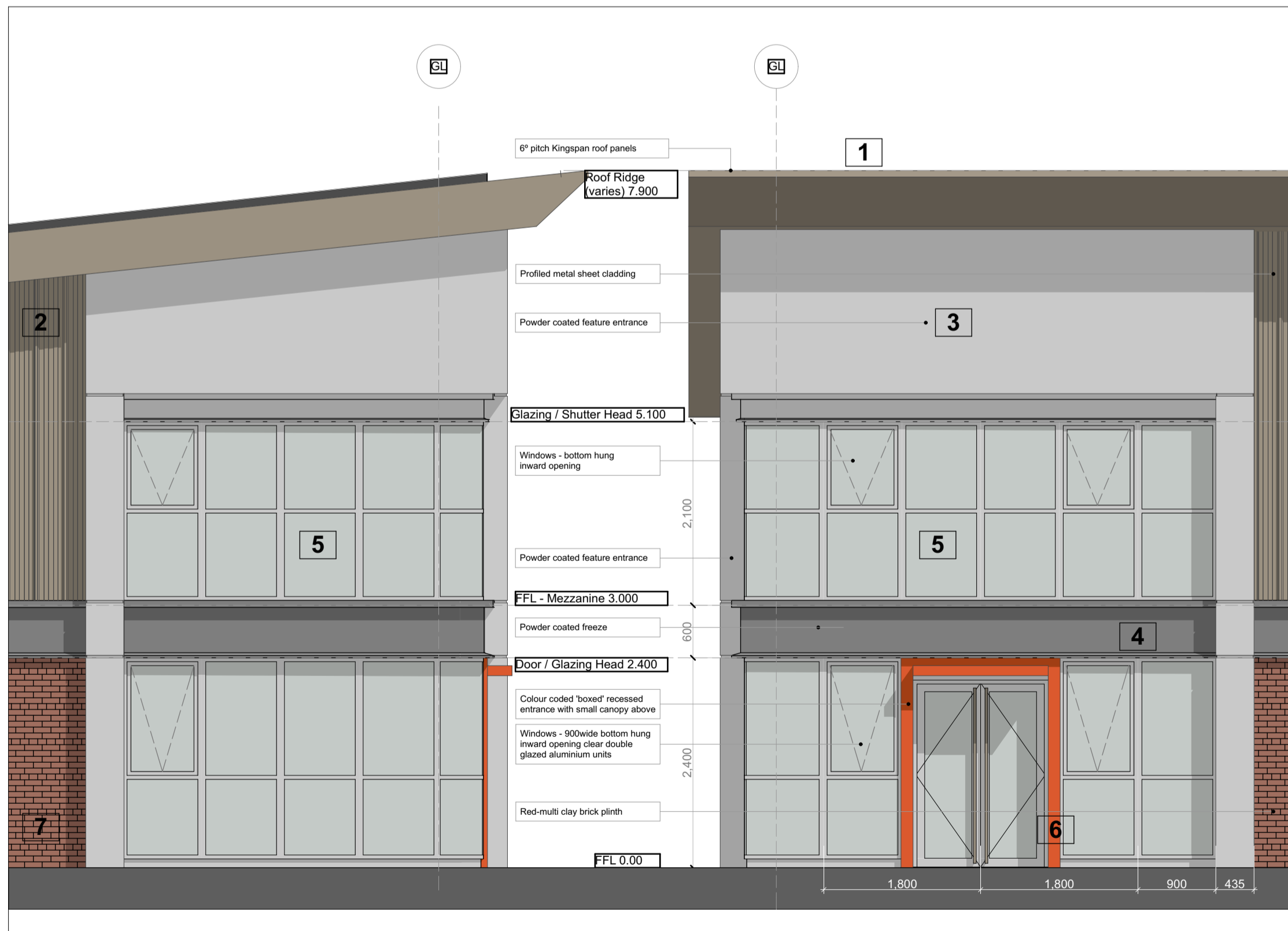
A3 1:100 Rear/Loading



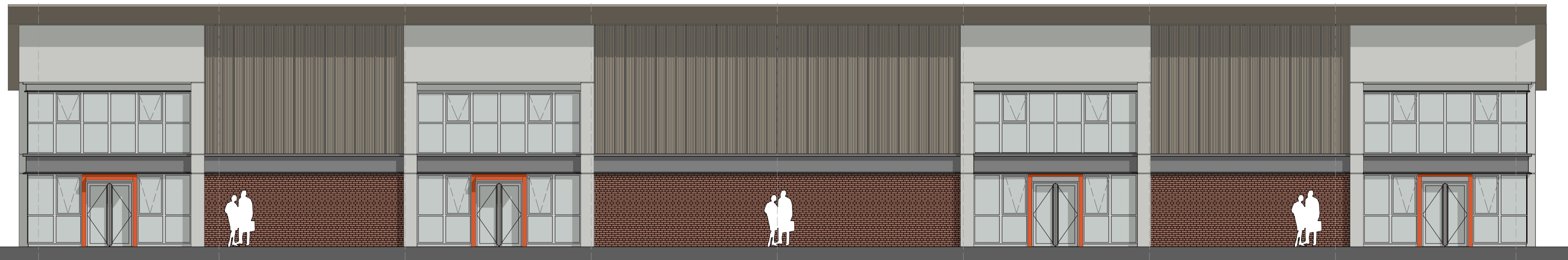
A4 1:100 Gable



Unit A 1:100 FLOOR PLAN UNIT A



A-Detail 1:50



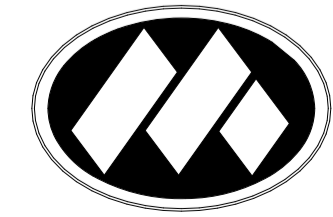
A1 1:100 Entrance

Materials Key

- 6° Pitch Kingspan ARP KS1000 RW & Kingspan day-lite trapezoidal KS1000 DLTR
- Kingspan Panel 1 - KS1000 RW (Profiled Panel) - Colour 1035 Beigestone
- Aluminium Flat Panel - Colour RAL9006 Silver
- Profiled Advertising Panel - Colour Dark Grey
- Aluminium thermally broken clear double glazed ppc units - RAL9006 silver
- Aluminium double glazed Entrance Doors with aluminium profiled surround
- Multi Red Brick Plinth
- Aluminium composite personnel doors and industrial roller shutter doors - Colour RAL9006 silver

Rev. Date Description Drawn

Note: Do not scale off this drawing. Do not rely on this drawing for purposes other than the recorded 'Status'. Constructors must be familiar with the client's building asbestos register ahead of facilitating any work contained on this drawing. This drawing is copyright of HLP Architects & Designers & must not be reproduced unless specifically agreed in writing.



Office: Liverpool, Nottingham, Newcastle, Preston
 Drawing Title: **Hadley Park - Unit A1-12**
 Address: **98-100 Duke Street**
 Post Code: **L1 5AG**
 Tel: **0151 708 8944**
 Website: **www.hlpdesign.com**

Project: **Hadley Park East, Hadley, Telford**
 Client: **Morris & Company - Homes & Communities Agency**
 Scales @ A1: **1:100**
 Date: **05/11/18**
 Job Number: **L2778-PP**
 Drawing: **GA100_10**
 Status: **PLANNING**

Drawn: **JDP**
 Check: **BY**

Halsall Lloyd Partnership
 ARCHITECTS & DESIGNERS