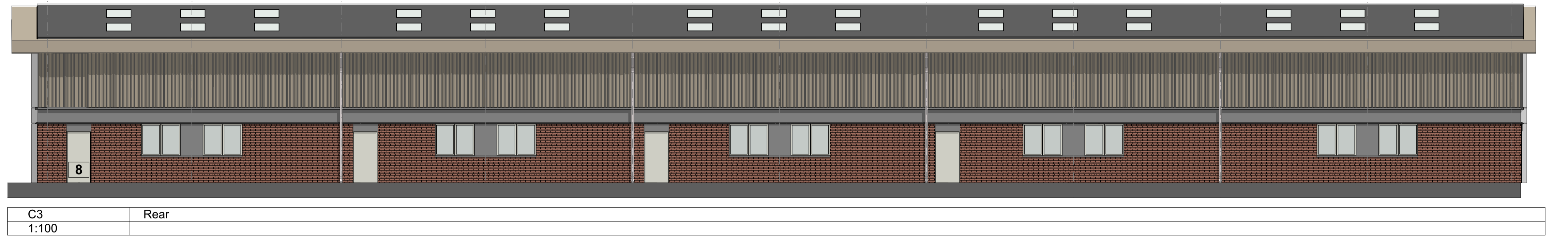


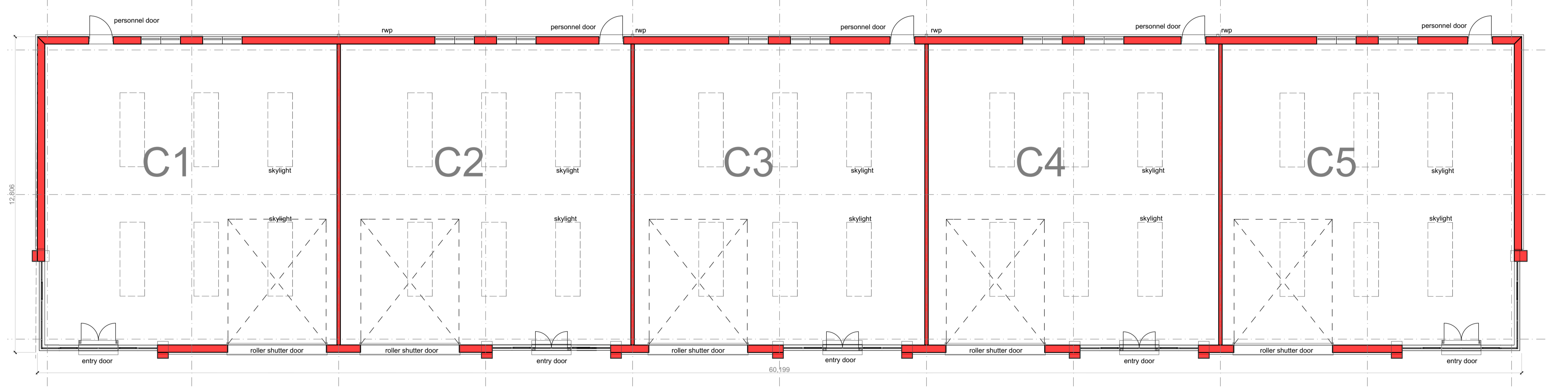
C5
1:100
Gable



C1
1:100
Gable



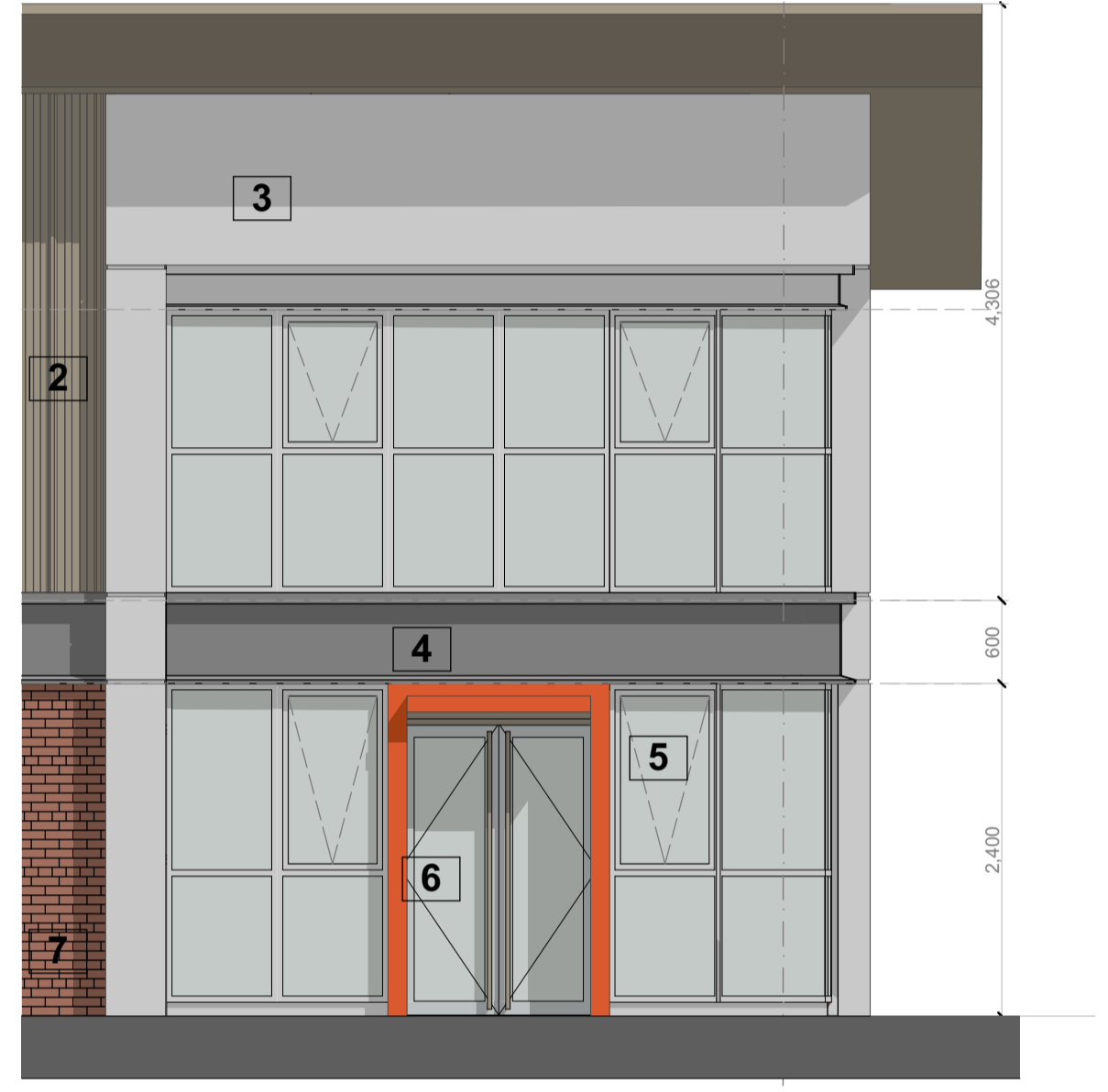
C3
1:100
Rear



Unit C1-5
1:100
FLOOR PLAN UNIT C



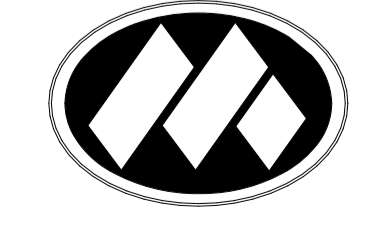
C1
1:100
Entrance



C-Detail
1:50

Materials Key

- 1 - 6° Pitch Kingspan ARP KS1000 RW & Kingspan day-lite trapezoidal KS1000 DLTR
- 2 - Kingspan Panel 1 - KS1000 RW (Profiled Panel) - Colour 1035 Beigestone
- 3 - Aluminium Flat Panel - Colour RAL9006 Silver
- 4 - Profiled Advertising Panel - Colour Dark Grey
- 5 - Aluminium thermally broken clear double glazed ppc units - RAL9006 silver
- 6 - Aluminium double glazed Entrance Doors with aluminium profiled surround
- 7 - Multi Red Brick Plinth
- 8 - Aluminium composite personnel doors and industrial roller shutter doors - Colour RAL9006 silver



Office: Liverpool, Nottingham, Newcastle, Preston	Drawing Title: Hadley Park - Unit C1-5
Address: 98-100 Duke Street	Project: Hadley Park East, Hadley, Telford
Post Code: L1 5AG	Client: Morris & Company - Homes & Communities Agency
Tel: 0151 708 8944	Scales @ A1: 1:100, 1:50
Website: www.hlpdesign.com	Date: 05/11/18
	Job Number: L2778-PP
	Dir. No - Revision: GA100_13
	Status: PLANNING



Rev. Date Description Drawn
 Note: Do not scale off this drawing. Do not rely on this drawing for purposes other than the recorded 'Status'. Constructors must be familiar with the client's building asbestos register ahead of facilitating any work contained on this drawing. This drawing is copyright of HLP Architects & Designers & must not be reproduced unless specifically agreed in writing.