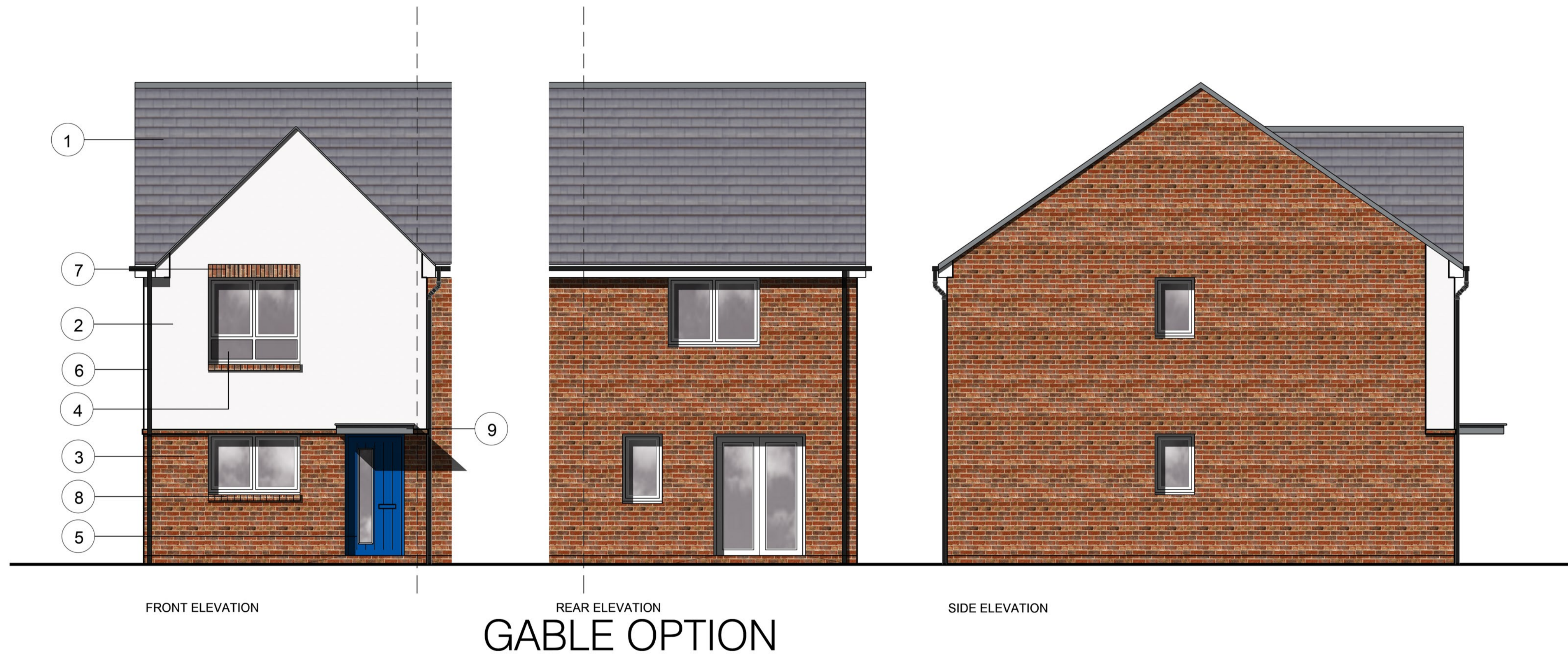
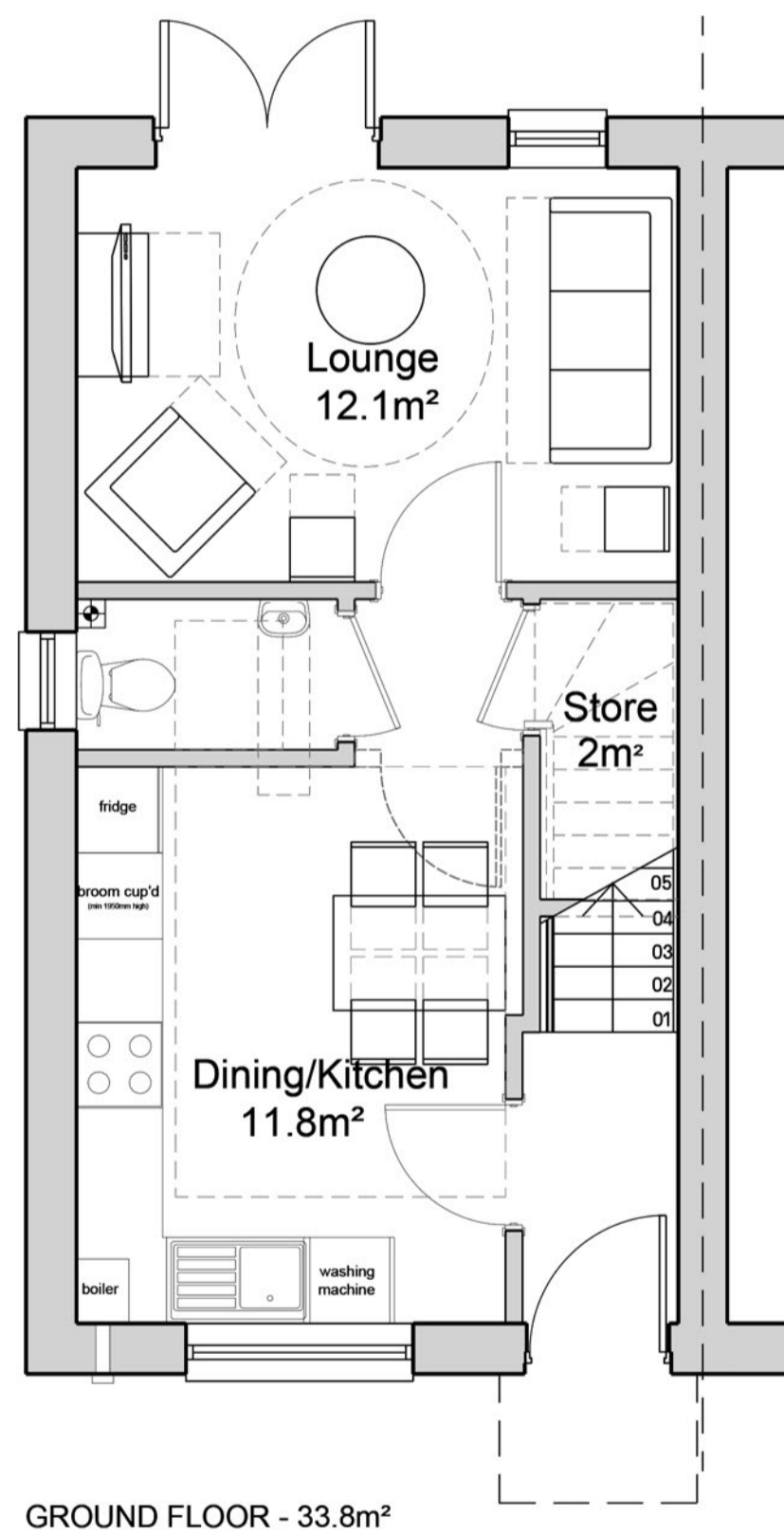


Materials Schedule

- 1 Interlocking Concrete Roof Tiles- Slate Grey
- 2 Red Multi Facing Brick
- 3 Cream/ White Through Colour Render
- 4 White uPVC Windows
- 5 Secured by Design External Door
- 6 Black uPVC Rainwater Goods
- 7 Soldier Course Detail
- 8 Brick on Edge Cill Brick Detail
- 9 GRP Canopy



**House Type Stowe**  
 2 Bed / 4 Person House  
 Area: 67.6m<sup>2</sup> (727.6 sqft)

Notes - Copyright in this drawing remains the property of BM3 Architecture Limited. - Do not scale this drawing. - Work to figured dimensions only. - Contractors and consultants are to advise BM3 Architecture Limited of any discrepancies.	Revision A MATERIAL KEY INCLUDED B AMENDMENT TO SIDE ELEVATION AMENDMENT TO FRONT ELEVATION ON GABLE OPTION	Date 24.10.18 30.10.18	By AK AK	Chkd PJS PJS	CDM Notes	Project PRINCESS AVENUE TELFORD		Drawing HOUSE TYPE STOWE		Client <b>The Wrekin</b> Housing Trust	
						Scale 1:50@A1	Dated SEPT 2018	Job No. 52807	Drawing No. D11	Drawn by AK	Checked PJS

